

---

# **OXY GRAND JUNCTION EBUSINESS**

---

**CC 697-10-58  
GRAND VALLEY  
Garfield County , Colorado**

**Cement Surface Casing**  
**19-Oct-2010**

**Post Job Report**

## Cementing Job Summary

## *The Road to Excellence Starts with Safety*

<b>Sold To #:</b> 344034	<b>Ship To #:</b> 344034	<b>Quote #:</b>	<b>Sales Order #:</b> 7706304
<b>Customer:</b> OXY GRAND JUNCTION EBUSINESS		<b>Customer Rep:</b> COOMBS, HENRY	
<b>Well Name:</b> CC		<b>Well #:</b> 697-10-58	<b>API/UWI #:</b> 05-045-18010
<b>Field:</b> GRAND VALLEY	<b>City (SAP):</b> BROWNFIELD	<b>County/Parish:</b> Garfield	<b>State:</b> Colorado
<b>Lat:</b> N 39.53 deg. OR N 39 deg. 31 min. 46.607 secs.		<b>Long:</b> W 108.213 deg. OR W -109 deg. 47 min. 13.322 secs.	
<b>Contractor:</b> H&P 353		<b>Rig/Platform Name/Num:</b> H&P 353	
<b>Job Purpose:</b> Cement Surface Casing			
<b>Well Type:</b> Development Well		<b>Job Type:</b> Cement Surface Casing	
<b>Sales Person:</b> DUNNING, DUSTIN		<b>Srvs Supervisor:</b> LEIST, JAMES	<b>MBU ID Emp #:</b> 362787

## Job Personnel

HES Emp Name	Exp Hrs	Emp #	HES Emp Name	Exp Hrs	Emp #	HES Emp Name	Exp Hrs	Emp #
DOUT, JACOB J	10	430298	LEIST, JAMES R	10	362787	RAMSEY, STANTON Michael	10	477609
SALAZAR, PAUL Omar	10	445614						

## Equipment

HES Unit #	Distance-1 way	HES Unit #	Distance-1 way	HES Unit #	Distance-1 way	HES Unit #	Distance-1 way
10000394	120 mile	10296152C	120 mile	10867304	120 mile	10897797	120 mile
11259882	120 mile	11463279	120 mile				

## Job Hours

Date	On Location Hours	Operating Hours	Date	On Location Hours	Operating Hours	Date	On Location Hours	Operating Hours
10-18-10	8	6	10-19-10	6	4			

<b>TOTAL</b>		<i>Total is the sum of each column separately</i>
--------------	--	---

Job						Job Times			
Formation Name							Date	Time	Time Zone
Formation Depth (MD)	Top			Bottom		Called Out	18 - Oct - 2010	09:00	MST
Form Type				BHST		On Location	18 - Oct - 2010	16:30	MST
Job depth MD	2711. ft			Job Depth TVD	2736. ft	Job Started	18 - Oct - 2010	20:00	MST
Water Depth				Wk Ht Above Floor	4. ft	Job Completed	19 - Oct - 2010	03:20	MST
Perforation Depth (MD)	From			To		Departed Loc	19 - Oct - 2010	06:30	MST

## Well Data

<i>Description</i>	<b>New / Used</b>	<b>Max pressure psig</b>	<b>Size in</b>	<b>ID in</b>	<b>Weight lbm/ft</b>	<b>Thread</b>	<b>Grade</b>	<b>Top MD ft</b>	<b>Bottom MD ft</b>	<b>Top TVD ft</b>	<b>Bottom TVD ft</b>
--------------------	-----------------------	----------------------------------	--------------------	------------------	--------------------------	---------------	--------------	----------------------	-----------------------------	---------------------------	------------------------------

**Sales/Rental/3<sup>rd</sup> Party (HES)**

Description	Qty	Qty uom	Depth	Supplier
PLUG,CMTG,TOP,9 5/8,HWE,8.16 MIN/9.06 MA	1	EA		
R/A DENSOMETER W/CHART RECORDER,/JOB,ZI	1	JOB		
PORT. DATA ACQUIS. W/OPTICEM RT W/HES	1	EA		
ADC (AUTO DENSITY CTRL) SYS, /JOB,ZI	1	JOB		

## Tools and Accessories

Type	Size	Qty	Make	Depth	Type	Size	Qty	Make	Depth	Type	Size	Qty	Make
Guide Shoe					Packer					Top Plug	9.625	1	
Float Shoe					Bridge Plug					Bottom Plug			
Float Collar					Retainer					SSR plug set			
Insert Float										Plug Container	9.625	1	
Stage Tool										Centralizers			

## Miscellaneous Materials

Gelling Agt	Conc	Surfactant	Conc	Acid Type	Qty	Conc	%
Treatment Fld	Conc	Inhibitor	Conc	Sand Type	Size	Qty	

Fluid Data									
Stage/Plug #: 1									
Fluid #	Stage Type	Fluid Name	Qty	Qty uom	Mixing Density lbm/gal	Yield ft <sup>3</sup> /sk	Mix Fluid Gal/sk	Rate bbl/min	Total Mix Fluid Gal/sk
1	Water Spacer		20.00	bbl	8.33	.0	.0	.0	
2	Super Flush 101	SUPER FLUSH 101 - SBM (12199)	20.00	bbl	10.	.0	.0	.0	
3	Water Spacer		20.00	bbl	.	.0	.0	.0	
4	Lead Cement	VERSACEM (TM) SYSTEM (452010)	881.0	sacks	12.3	2.33	12.62		12.62
		12.62 Gal	FRESH WATER						
5	Tail Cement	VERSACEM (TM) SYSTEM (452010)	125.0	sacks	12.8	2.07	10.67		10.67
		10.67 Gal	FRESH WATER						
6	Displacement		209.00	bbl	.	.0	.0	.0	
7	Topout Cement	HALCEM (TM) SYSTEM (452986)		sacks	12.5	1.97	10.96		10.96
		10.96 Gal	FRESH WATER						
Calculated Values		Pressures		Volumes					
Displacement	209	Shut In: Instant		Lost Returns	0	Cement Slurry	411	Pad	
Top Of Cement	SURFACE	5 Min		Cement Returns	2	Actual Displacement	209	Treatment	
Frac Gradient		15 Min		Spacers	60	Load and Breakdown		Total Job	
Rates									
Circulating		Mixing	6	Displacement	6	Avg. Job	6		
Cement Left In Pipe	Amount	54.07 ft	Reason	Shoe Joint					
Frac Ring # 1 @	ID	Frac ring # 2 @	ID	Frac Ring # 3 @	ID	Frac Ring # 4 @	ID		
The Information Stated Herein Is Correct				Customer Representative Signature					

*The Road to Excellence Starts with Safety*

<b>Sold To #:</b> 344034		<b>Ship To #:</b> 344034		<b>Quote #:</b>		<b>Sales Order #:</b> 7706304	
<b>Customer:</b> OXY GRAND JUNCTION EBUSINESS				<b>Customer Rep:</b> COOMBS, HENRY			
<b>Well Name:</b> CC			<b>Well #:</b> 697-10-58			<b>API/UWI #:</b> 05-045-18010	
<b>Field:</b> GRAND VALLEY		<b>City (SAP):</b> BROWNFIELD		<b>County/Parish:</b> Garfield		<b>State:</b> Colorado	
<b>Legal Description:</b>							
<b>Lat:</b> N 39.53 deg. OR N 39 deg. 31 min. 46.607 secs.				<b>Long:</b> W 108.213 deg. OR W -109 deg. 47 min. 13.322 secs.			
<b>Contractor:</b> H&P 353			<b>Rig/Platform Name/Num:</b> H&P 353				
<b>Job Purpose:</b> Cement Surface Casing						<b>Ticket Amount:</b>	
<b>Well Type:</b> Development Well			<b>Job Type:</b> Cement Surface Casing				
<b>Sales Person:</b> DUNNING, DUSTIN			<b>Srv Supervisor:</b> LEIST, JAMES			<b>MBU ID Emp #:</b> 362787	

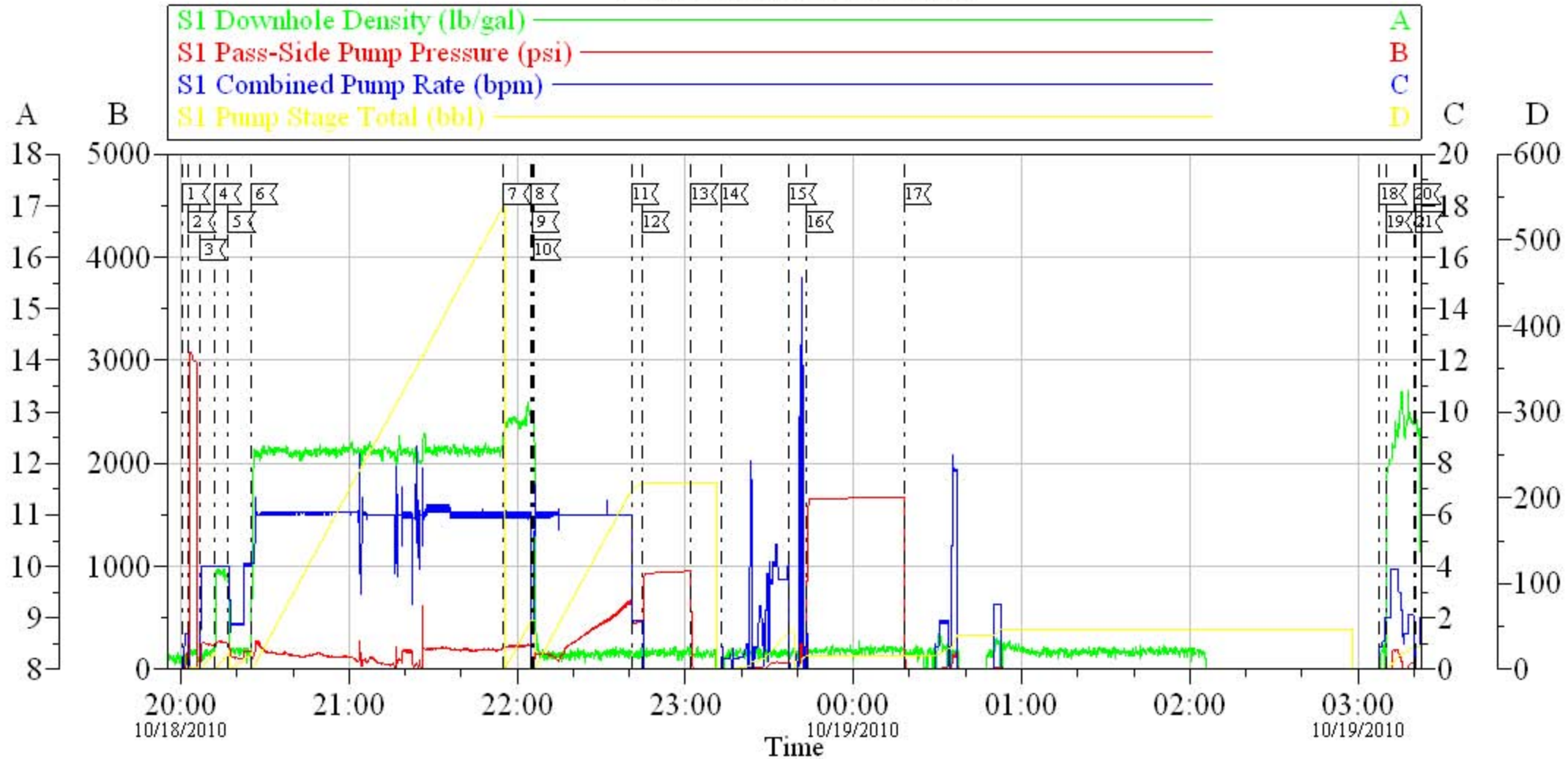
Activity Description	Date/Time	Cht #	Rate bbl/min	Volume bbl		Pressure psig		Comments
				Stage	Total	Tubing	Casing	
Call Out	10/18/2010 09:00							TP- 2711, TD-2736, S.J.-54.07, HOLE-14 3/4, MUD#-9.4, YP-18, PV-16, TEMP-78
Pre-Convoy Safety Meeting	10/18/2010 10:30							WITH ALL HES PERSONNEL
Crew Leave Yard	10/18/2010 10:45							RIG CIRULATED LANDING JOINT DOWN AND THEN LOST RETURNS AND BEGAIN PUMPING CMT JOB
Arrive At Loc	10/18/2010 16:30							RUNNING CASING
Assessment Of Location Safety Meeting	10/18/2010 16:45							WITH ALL HES PERSONNEL
Pre-Rig Up Safety Meeting	10/18/2010 16:50							WITH ALL HES PERSONNEL
Rig-Up Completed	10/18/2010 18:00							RIGGED UP MANIFOLD TO PERASITE IN CELLER AND BE ABLE TO TAKE RETURNS OUT TO PIT
Pre-Job Safety Meeting	10/18/2010 19:30							WITH ALL ON LOCATION PERSONNEL
Start Job	10/18/2010 20:00							NO CIRULATION THROUGHOUT JOB, NO PIPE MOVEMENT DURING JOB
Pressure Test	10/18/2010 20:02							2500 PSI
Pump Spacer 1	10/18/2010 20:06		4	20			230.0	FRESH WATER

Activity Description	Date/Time	Cht #	Rate bbl/min	Volume bbl		Pressure psig		Comments
				Stage	Total	Tubing	Casing	
Pump Spacer 1	10/18/2010 20:11		4	20			260.0	SUPER FLUSH, SUPERFLUSH TRUCK ON LOCATION FROM 1630- 2016 TOTAL 4 HOURS
Pump Spacer 1	10/18/2010 20:16		4	20			175.0	FRESH WATER
Pump Lead Cement	10/18/2010 20:24		5	365			230.0	881 SKS, 12.3 PPG, 2.33 FT3/SK, 12.62 GAL/SK, HAD PROBLEMS KEEPING PRIME ON PUMPS CAUSED BY TUFF FIBER CHART SHOWS MORE CMT PUMPED THEN ACTUAL AMOUNT
Pump Tail Cement	10/18/2010 21:55		5	46			245.0	125 SKS, 12.8 PPG, 2.07 FT3/SK, 10.67 GAL/SK
Shutdown	10/18/2010 22:05							
Drop Top Plug	10/18/2010 22:05							AWAY
Pump Displacement	10/18/2010 22:05		5	209			640.0	FRESH WATER
Slow Rate	10/18/2010 22:40		2	200			450.0	TO BUMP PLUG
Bump Plug	10/18/2010 22:44		2	209			460.0	PLUG BUMPED TOOK 500 PSI OVER HELD FOR 15 MIN.
Check Floats	10/18/2010 23:01						910.0	THE FLOATS ARE HOLDING
Comment	10/18/2010 23:12		3	12			100.0	PUMPED PERASITE STRING WITH 12 BBLS SUGAR WATER, DID NOT SEE ANY PRESSURE SPIKE, DID HAVE CIRULATION
Shutdown	10/18/2010 23:37							
Comment	10/18/2010 23:45						1500.0	TESTED CASING TO 1500 PSI AND HELD FOR 30 MIN
Pump Water	10/19/2010 03:07		1	1			11.0	FRESH WATER

Activity Description	Date/Time	Cht #	Rate bbl/ min	Volume bbl		Pressure psig		Comments
				Stage	Total	Tubing	Casing	
Pump Cement	10/19/2010 03:09		3	26			123.0	74 SKS, 12.5 PPG, 1.97 FT3/SK, CMT TO SURFACE
Shutdown	10/19/2010 03:19							
End Job	10/19/2010 03:20							
Pre-Rig Down Safety Meeting	10/19/2010 03:35							WITH ALL HES PERSONNEL
Rig-Down Completed	10/19/2010 05:30							
Pre-Convoy Safety Meeting	10/19/2010 06:00							WITH ALL HES PERSONNEL
Crew Leave Location	10/19/2010 06:30							
Comment	10/19/2010 06:30							THANKYOU FOR USING HALLIBURTON CEMENT, JAMES LEIST AND CREW, BIN ALREADY ON LOCATION NO DOT CHARGES

# OXY

## 9 5/8 SURFACE CASING



Local Event Log					
1	START JOB	10/18/2010 20:00:40	2	PRESSURE TEST	10/18/2010 20:02:46
3	PUMP H2O SPACER	10/18/2010 20:06:38	4	PUMP SUPERFLUSH	10/18/2010 20:11:56
5	PUMP H2O SPACER	10/18/2010 20:16:50	6	PUMP LEAD CMT	10/18/2010 20:24:55
7	PUMP TAIL CMT	10/18/2010 21:55:04	8	SHUTDOWN	10/18/2010 22:05:00
9	DROP TOP PLUG	10/18/2010 22:05:27	10	PUMP DISPLACMENT	10/18/2010 22:05:55
11	SLOW RATE	10/18/2010 22:40:51	12	BUMP PLUG	10/18/2010 22:44:43
13	CHECK FLOATS	10/18/2010 23:01:58	14	PUMP PARASITE STRING	10/18/2010 23:12:53
15	SHUTDOWN	10/18/2010 23:37:06	16	PRESSURE TEST CASING	10/18/2010 23:43:05
17	RELEASE PSI	10/19/2010 00:18:11	18	PUMP H2O	10/19/2010 03:07:46
19	PUMP TOP OUT CMT	10/19/2010 03:09:57	20	SHUTDOWN	10/19/2010 03:19:55
21	END JOB	10/19/2010 03:20:30			

Customer: OXY  
Well Description: CC 697-10-58  
Company Rep: HENRY COOMBS

Job Date: 18-Oct-2010  
Job Type: SURFACE  
Cement Supervisor: JAMES LEIST

Sales Order #: 7706304  
ADC Used: YES  
Elite #9 PAUL SALAZAR

HALLIBURTON  
OptiCern v6.3.4  
19-Oct-10 03:47