
OXY GRAND JUNCTION EBUSINESS

**CC 697-10-50A
GRAND VALLEY
Garfield County , Colorado**

Cement Surface Casing
22-Oct-2010

Post Job Report

The Road to Excellence Starts with Safety

Sold To #: 344034		Ship To #: 2814435		Quote #:		Sales Order #: 7711532	
Customer: OXY GRAND JUNCTION EBUSINESS				Customer Rep: CALDERON, GABRIEL			
Well Name: CC			Well #: 697-10-50A			API/UWI #: 05-045-18022	
Field: GRAND VALLEY		City (SAP): PARACHUTE		County/Parish: Garfield		State: Colorado	
Lat: N 39.53 deg. OR N 39 deg. 31 min. 46.297 secs.				Long: W 108.213 deg. OR W -109 deg. 47 min. 12.584 secs.			
Contractor: H&P Drilling			Rig/Platform Name/Num: H&P 353				
Job Purpose: Cement Surface Casing							
Well Type: Development Well			Job Type: Cement Surface Casing				
Sales Person: DUNNING, DUSTIN			Srv Supervisor: MUHLESTEIN, RYAN			MBU ID Emp #: 453609	

Job Personnel

HES Emp Name	Exp Hrs	Emp #	HES Emp Name	Exp Hrs	Emp #	HES Emp Name	Exp Hrs	Emp #
ARNOLD, EDWARD John	17.5	439784	BEAGLEY, JEFFREY Allen	17.5	476070	DUBON, TODD N	17.5	443351
MUHLESTEIN, RYAN Herrick	17.5	453609	ROSS, CHARLES Raymond	17.5	453128			

Equipment

HES Unit #	Distance-1 way	HES Unit #	Distance-1 way	HES Unit #	Distance-1 way	HES Unit #	Distance-1 way
10533645	120 mile	10551730C	120 mile	10822535	120 mile	10867425	120 mile
10897891	120 mile	10951250	120 mile	10973571	120 mile	11139328	120 mile
11463279	120 mile						

Job Hours

Date	On Location Hours	Operating Hours	Date	On Location Hours	Operating Hours	Date	On Location Hours	Operating Hours
10/22/10	17.5	6						
TOTAL			<i>Total is the sum of each column separately</i>					

Job

Formation Name						Date	Time	Time Zone		
Formation Depth (MD)		Top		Bottom		Called Out	21 - Oct - 2010	17:00	MST	
Form Type		BHST				On Location	21 - Oct - 2010	23:30	MST	
Job depth MD		2723. ft		Job Depth TVD		2723. ft	Job Started	22 - Oct - 2010	08:33	MST
Water Depth		Wk Ht Above Floor			4. ft	Job Completed	22 - Oct - 2010	15:45	MST	
Perforation Depth (MD)		From		To		Departed Loc	22 - Oct - 2010	17:00	MST	

Well Data

Description	New / Used	Max pressure psig	Size in	ID in	Weight lbm/ft	Thread	Grade	Top MD ft	Bottom MD ft	Top TVD ft	Bottom TVD ft
OPEN HOLE SECTION				14.75				.	2723.		
SURFACE CASING	Unknown		9.625	8.921	36.		J-55	.	2693.		

Sales/Rental/3rd Party (HES)

Description	Qty	Qty uom	Depth	Supplier
PLUG,CMTG,TOP,9 5/8,HWE,8.16 MIN/9.06 MA	1	EA		
R/A DENSOMETER W/CHART RECORDER,/JOB,ZI	1	JOB		
PORT. DATA ACQUIS. W/OPTICEM RT W/HES	1	EA		
ADC (AUTO DENSITY CTRL) SYS, /JOB,ZI	1	JOB		

Tools and Accessories

Type	Size	Qty	Make	Depth	Type	Size	Qty	Make	Depth	Type	Size	Qty	Make
Guide Shoe					Packer					Top Plug	9.625	1	HES
Float Shoe					Bridge Plug					Bottom Plug			
Float Collar					Retainer					SSR plug set			
Insert Float										Plug Container	9.625	1	HES
Stage Tool										Centralizers			

Miscellaneous Materials													
Gelling Agt		Conc		Surfactant		Conc		Acid Type		Qty		Conc	%
Treatment Fld		Conc		Inhibitor		Conc		Sand Type		Size		Qty	
Fluid Data													
Stage/Plug #: 1													
Fluid #	Stage Type	Fluid Name	Qty	Qty uom	Mixing Density lbm/gal	Yield ft ³ /sk	Mix Fluid Gal/sk	Rate bbl/min	Total Mix Fluid Gal/sk				
1	Water Spacer		20.00	bbl	8.33	.0	.0	5.0					
2	Super Flush 101	SUPER FLUSH 101 - SBM (12199)	20.00	bbl	10.	.0	.0	5.0					
3	Water Spacer		20.00	bbl	.	.0	.0	5.0					
4	VersaCem Lead Slurry	VERSACEM (TM) SYSTEM (452010)	881.0	sacks	12.3	2.33	12.62	6.0	12.62				
12.62 Gal		FRESH WATER											
5	VersaCem Tail Slurry	VERSACEM (TM) SYSTEM (452010)	125.0	sacks	12.8	2.07	10.67	6.0	10.67				
10.67 Gal		FRESH WATER											
6	Displacement		204.00	bbl	8.4	.0	.0	6.0					
7	Topout Cement	HALCEM (TM) SYSTEM (452986)	20	sacks	12.5	1.97	10.96		10.96				
10.96 Gal		FRESH WATER											
Calculated Values			Pressures		Volumes								
Displacement	204	Shut In: Instant		Lost Returns	0	Cement Slurry	411	Pad					
Top Of Cement	0	5 Min		Cement Returns	70	Actual Displacement	204	Treatment					
Frac Gradient		15 Min		Spacers	40	Load and Breakdown		Total Job					
Rates													
Circulating	4	Mixing	6	Displacement	6	Avg. Job	6						
Cement Left In Pipe	Amount	53 ft	Reason	Shoe Joint									
Frac Ring # 1 @	ID	Frac ring # 2 @	ID	Frac Ring # 3 @	ID	Frac Ring # 4 @	ID						
The Information Stated Herein Is Correct				Customer Representative Signature									

The Road to Excellence Starts with Safety

Sold To #: 344034		Ship To #: 2814435		Quote #:		Sales Order #: 7711532	
Customer: OXY GRAND JUNCTION EBUSINESS				Customer Rep: CALDERON, GABRIEL			
Well Name: CC			Well #: 697-10-50A			API/UWI #: 05-045-18022	
Field: GRAND VALLEY		City (SAP): PARACHUTE		County/Parish: Garfield		State: Colorado	
Legal Description:							
Lat: N 39.53 deg. OR N 39 deg. 31 min. 46.297 secs.				Long: W 108.213 deg. OR W -109 deg. 47 min. 12.584 secs.			
Contractor: H&P Drilling			Rig/Platform Name/Num: H&P 353				
Job Purpose: Cement Surface Casing						Ticket Amount:	
Well Type: Development Well			Job Type: Cement Surface Casing				
Sales Person: DUNNING, DUSTIN			Srv Supervisor: MUHLESTEIN, RYAN			MBU ID Emp #: 453609	

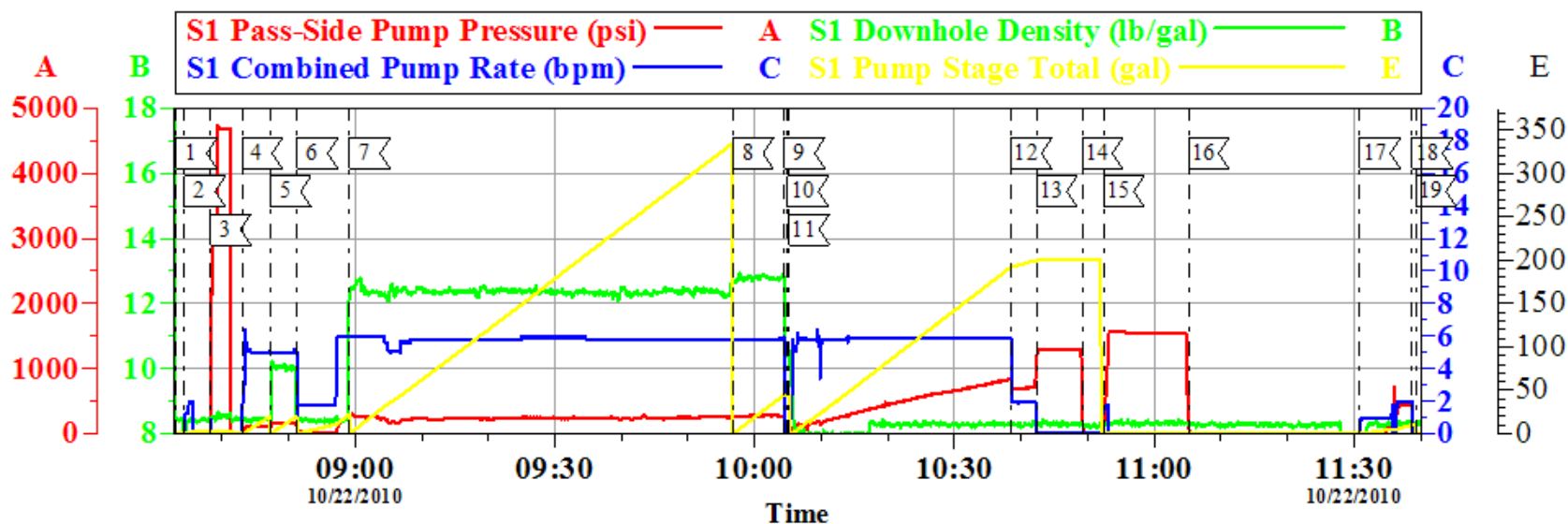
Activity Description	Date/Time	Cht #	Rate bbl/min	Volume bbl		Pressure psig		Comments
				Stage	Total	Tubing	Casing	
Call Out	10/21/2010 17:00							
Arrive At Loc	10/21/2010 23:30							Rig running casing
Pre-Rig Up Safety Meeting	10/22/2010 06:15							ALL HES EE'S ATTEND
Rig-Up Equipment	10/22/2010 06:30							1 HT 400 PUMP, 1 660 BULK TRAILER, 1 1600 BULK STORAGE BIN, 1 SUPERFLUSH TRANSPORT, 1 F-450 PICK-UP, 1 PLUG CONTAINER
Pre-Job Safety Meeting	10/22/2010 08:00							ALL HES AND RIG CREW ATTENDS
Start Job	10/22/2010 08:33							TD-2723' TP-2693' SJ-53' CASING 9 5/8" 36# J-55, HOLE 14 3/4" MUD 9.5 PPG
Other	10/22/2010 08:34		2	2			35.0	FILL LINES
Test Lines	10/22/2010 08:38						4705.0	HELD PRESSURE FOR 2 MIN NO LEAKS
Pump Spacer 1	10/22/2010 08:42		5	20			126.0	Fresh Water
Pump Spacer 2	10/22/2010 08:47		5	20			180.0	Super Flush
Pump Spacer 1	10/22/2010 08:51		6	20			224.0	PUMPED FRESH H2O AT 2 BPM UNTIL TUB WEIGHED UP, THEN INCREASED RATE TO 6 BPM AT 11 AWAY
Pump Lead Cement	10/22/2010 08:59		6	365			250.0	881 SKS 12.3 PPG 2.33 FT3/SK 12.62 GAL/SK TUFF FIBER

Activity Description	Date/Time	Cht #	Rate bbl/min	Volume bbl		Pressure psig		Comments
				Stage	Total	Tubing	Casing	
Pump Tail Cement	10/22/2010 09:56		6	46			259.0	125 SKS 12.8 PPG 2.07 FT3/SK 10.67 GAL/SK
Shutdown	10/22/2010 10:04							
Drop Top Plug	10/22/2010 10:05							VERIFY PLUG LEFT CONTAINER
Pump Displacement	10/22/2010 10:05		6	204			830.0	FRESH H2O DISPLACEMENT, CEMENT RETURNS AT 135 BBLS AWAY, 70 BBLS CEMENT TO SURFACE
Slow Rate	10/22/2010 10:38		2	194			700.0	
Bump Plug	10/22/2010 10:42		2	204			1230.0	PRESSURED UP TO 1230 PSI
Check Floats	10/22/2010 10:49							FLOATS HELD, 1.5 BBLS BACK TO PUMP TRUCK
Pressure Test	10/22/2010 10:52		2	1.5			1583.0	PRESSURE TEST CASING PER CO REP REQUEST, HELD PRESSURE 15 MINS
Release Casing Pressure	10/22/2010 11:05							
Pump Water	10/22/2010 11:30		2	10			30.0	PUMP SUGAR WATER THRU PARASITE LINE, RETURNS TO PIT
Shutdown	10/22/2010 11:38							GOOD CIRCULATION THROUGHT JOB, PIPE NOT RECIPRICATED. RIG CIRCULATED 1 HOUR
End Job	10/22/2010 11:39							50 LBS SUGAR USED
Other	10/22/2010 12:00							WAITING TO TOP OUT
Start Job	10/22/2010 15:24							START TOP OUT JOB
Pump Water	10/22/2010 15:26		2	1.5			20.0	PUMP FRESH H2O TO FILL LINES
Pump Cement	10/22/2010 15:35		1	7			35.0	7 BBLS TOP OUT CEMENT PUMPED, 20 SKS 12.5 PPG 1.97 FT3/SK 10.96 GAL/SK
Shutdown	10/22/2010 15:42							

Activity Description	Date/Time	Cht #	Rate bbl/min	Volume bbl		Pressure psig		Comments
				Stage	Total	Tubing	Casing	
Pump Water	10/22/2010 15:43		1	2			30.0	PUMP FRESH H2O TO CLEAN LINES
Shutdown	10/22/2010 15:44							
End Job	10/22/2010 15:45							
Pre-Rig Down Safety Meeting	10/22/2010 16:00							ALL HES EE'S ATTEND
Rig-Down Equipment	10/22/2010 16:05							
Pre-Convoy Safety Meeting	10/22/2010 17:00							ALL HES EE'S ATTEND
Depart Location for Service Center or Other Site	10/22/2010 17:10							THANKS FOR USING GRAND JUNCTION, HALLIBURTON CEMENT, RYAN MUHLESTEIN AND CREW

OXY

9 5/8" SURFACE



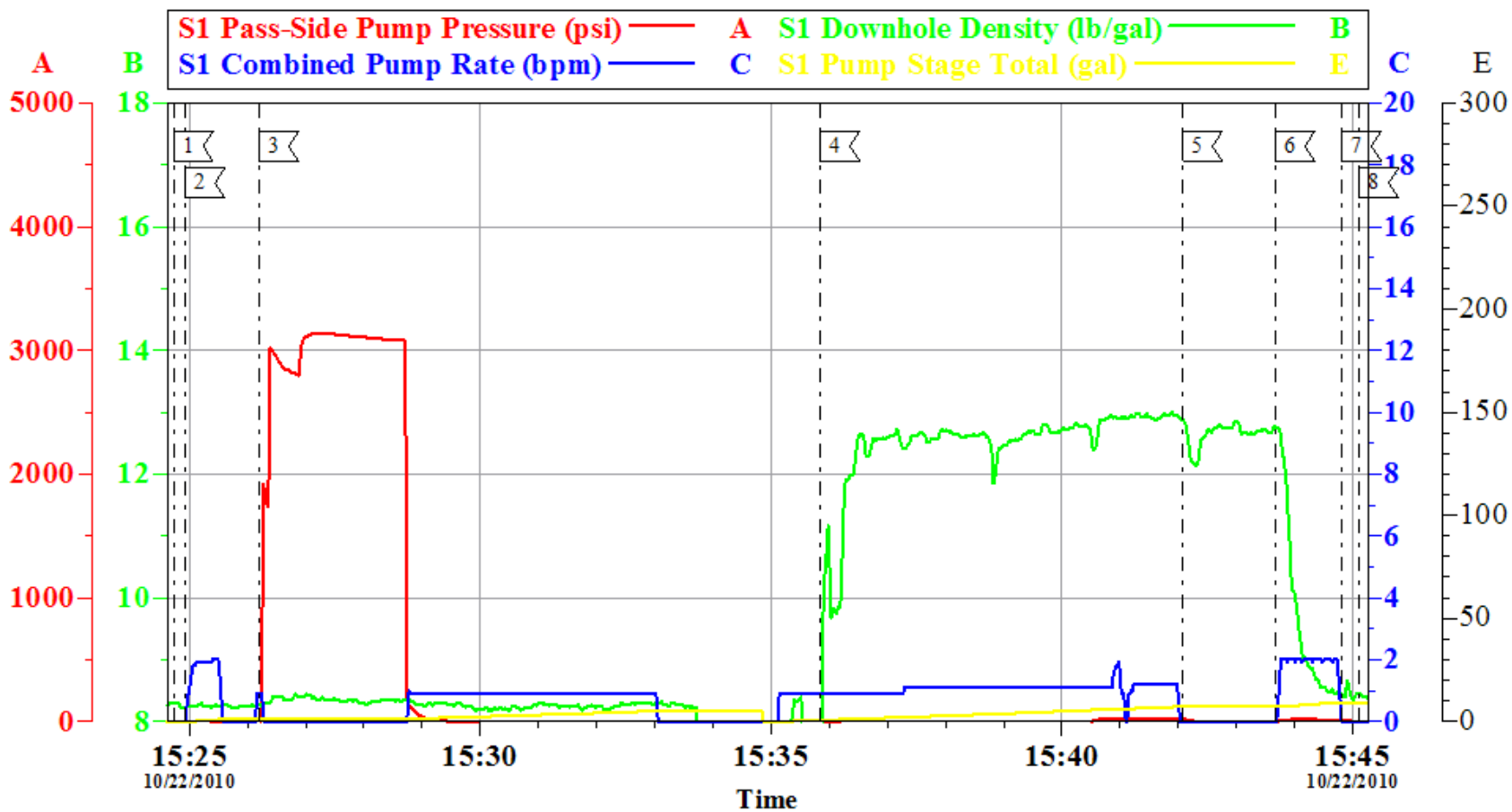
Local Event Log			
Maximum	SPPP	Maximum	SPPP
1 START JOB	08:33:10 -14.70	2 FILL LINES	08:34:24 21.30
3 TEST LINES	08:38:15 4728	4 PUMP H2O SPACER	08:42:59 117.3
5 PUMP SUPER FLUSH SPACER	08:47:18 170.3	6 PUMP H2O SPACER	08:51:19 265.5
7 PUMP LEAD CEMENT	08:59:11 304.3	8 PUMP TAIL CEMENT	09:56:42 284.3
9 SHUT DOWN	10:04:27 187.3	10 DROP PLUG	10:05:00 19.30
11 PUMP DISPLACEMENT	10:05:08 839.3	12 SLOW RATE	10:38:31 1158
13 BUMP PLUG	10:42:20 1291	14 CHECK FLOATS	10:49:11 336.3
15 PRESSURE TEST CASING	10:52:23 1572	16 RELEASE PRESSURE	11:05:08 119.3
17 PUMP DOWN PARASITE	11:30:52 724.3	18 SHUT DOWN	11:38:45 234.3
19 END JOB	11:39:16 2.304		

Customer: OXY	Job Date: 22-Oct-2010	Sales Order #: 7711532
Well Description: CC 697-10-50A	Job type: SURFACE	ADC Used: YES
Customer Rep: GABRIEL CALDERON	Service Supervisor: RYAN MUHLESTEIN	Operator/ Pump: ELITE 2 ED ARNOLD

OptiCem v6.4.6
22-Oct-10 12:01

OXY

9 5/8" SURFACE TOP OUT 1



Customer: OXY	Job Date: 22-Oct-2010	Sales Order #: 7711532	OptiCem v6.4.6 22-Oct-10 16:08
Well Description: CC697-10-50A	Job type: SURFACE	ADC Used: YES	
Customer Rep: GABREIL CALDERON	Service Supervisor: RYAN MUHLESTEIN	Operator/ Pump: ELITE 2/ED ARNOLD	