

T4S, R96W, 6th P.M.

Encana OIL & GAS (USA) INC.

Well location, DW 8608A-33 P28 496 (SURFACE LOCATION), located as shown in the SE 1/4 SE 1/4 of Section 28, T4S, R96W, 6th P.M., Garfield County, Colorado.

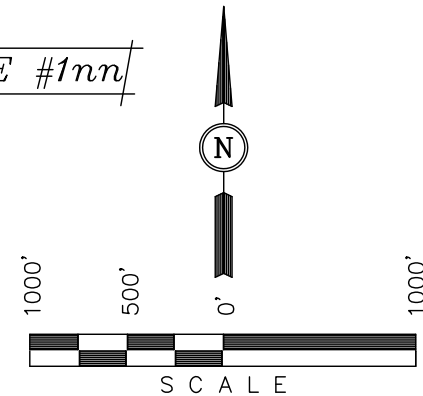
BASIS OF ELEVATION

BENCH MARK (H79) LOCATED IN THE NE 1/4 OF SECTION 35, T4S, R98W, 6th P.M. TAKEN FROM THE BULL FORK QUADRANGLE, COLORADO, 7.5 MINUTE SERIES (TOPO GRAPHICAL MAP) PUBLISHED BY THE UNITED STATES DEPARTMENT OF THE INTERIOR, GEOLOGICAL SURVEY. SAID ELEVATION IS MARKED AS BEING 8535 FEET.

BASIS OF BEARINGS

BASIS OF BEARINGS IS A G.P.S. OBSERVATION.

FIGURE #1nn



CERTIFICATE

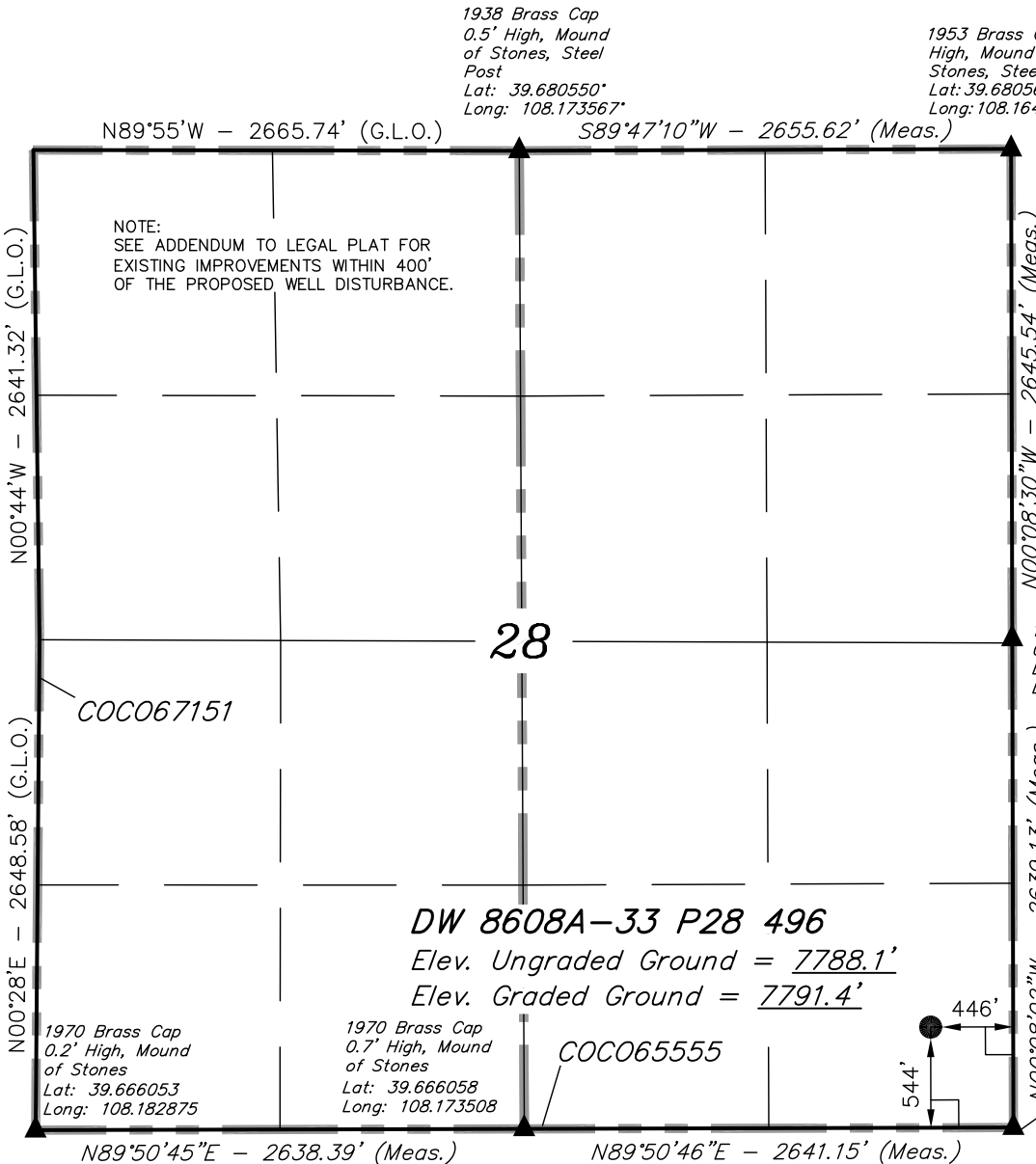
THIS IS TO CERTIFY THAT THE ABOVE PLAT WAS PREPARED FROM FIELD NOTES OF ACTUAL SURVEYS MADE BY ME OR UNDER MY SUPERVISION AND THAT THE SAME ARE TRUE AND CORRECT TO THE BEST OF MY KNOWLEDGE AND BELIEF.

[Signature]
 17492
 REGISTERED LAND SURVEYOR
 REGISTRATION NO. 17492
 STATE OF COLORADO

1953 Brass Cap
 0.9' High, Steel Post
 Lat: 39.666061
 Long: 108.164131

REVISED: 01-25-11
 REVISED: 12-13-10

UINTAH ENGINEERING & LAND SURVEYING
 85 SOUTH 200 EAST - VERNAL, UTAH 84078
 (435) 789-1017



NOTE:
 THE PROPOSED BOTTOM HOLE FOR THIS WELL IS LOCATED IN THE SE 1/4 NE 1/4 OF SECTION 33, T4S, R96W, 6th P.M. AT A DISTANCE OF 1364' FNL 1281' FEL. IT BEARS S23°30'33"W 2082.59' FROM THE PROPOSED WELL HEAD.

LEGEND:

- = 90° SYMBOL
- = PROPOSED WELL HEAD.
- = SECTION CORNERS LOCATED.

PDOP = 1.4

NAD 83 (SURFACE LOCATION)	
LATITUDE = 39°40'03.19" (39.667553)	
LONGITUDE = 108°09'56.56" (108.165711)	
NAD 27 (SURFACE LOCATION)	
LATITUDE = 39°40'03.28" (39.667578)	
LONGITUDE = 108°09'54.27" (108.165075)	

SCALE 1" = 1000'	DATE SURVEYED: 09-17-10	DATE DRAWN: 11-16-10
PARTY B.J. B.H. C.H.	REFERENCES G.L.O. PLAT	
WEATHER COOL	FILE Encana OIL & GAS (USA) INC.	

T4S, R96W, 6th P.M.

SG 8603F-33
P28 496
Surface Hole

1953 Brass Cap
0.9' High, Steel
Post
Lat: 39.666061
Long: 108.164131

Encana OIL & GAS (USA) INC.

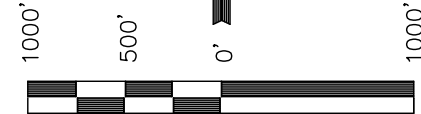
Well location, DW 8608A-33 P28 496 (TARGET
BOTTOM HOLE), located as shown in the SE 1/4
NE 1/4 of Section 33, T4S, R96W, 6th P.M.,
Garfield County, Colorado.
BASIS OF ELEVATION

BENCH MARK (H79) LOCATED IN THE NE 1/4 OF SECTION
35, T4S, R98W, 6th P.M. TAKEN FROM THE BULL FORK
QUADRANGLE, COLORADO, 7.5 MINUTE SERIES (TOPO
GRAPHICAL MAP) PUBLISHED BY THE UNITED STATES
DEPARTMENT OF THE INTERIOR, GEOLOGICAL SURVEY. SAID
ELEVATION IS MARKED AS BEING 8535 FEET.

BASIS OF BEARINGS

BASIS OF BEARINGS IS A G.P.S. OBSERVATION.

FIGURE #100



SCALE

CERTIFICATE

THIS IS TO CERTIFY THAT THE ABOVE PLAT WAS PREPARED FROM
FIELD NOTES OF ACTUAL SURVEYS MADE BY ME OR UNDER MY
SUPERVISION AND THAT THE SAME ARE TRUE AND CORRECT TO THE
BEST OF MY KNOWLEDGE AND BELIEF.

17492
REGISTERED LAND SURVEYOR
REGISTRATION NO. 17492
STATE OF COLORADO

REVISED: 01-25-11
REVISED: 12-13-10

UINTAH ENGINEERING & LAND SURVEYING
85 SOUTH 200 EAST - VERNAL, UTAH 84078
(435) 789-1017

SCALE 1" = 1000'	DATE SURVEYED: 09-17-10	DATE DRAWN: 11-16-10
PARTY B.J. B.H. C.H.	REFERENCES G.L.O. PLAT	
WEATHER COOL	FILE Encana OIL & GAS (USA) INC.	

LEGEND:

- └─┘ = 90° SYMBOL
- = PROPOSED WELL HEAD.
- ▲ = SECTION CORNERS LOCATED.

LINE TABLE		
LINE	BEARING	LENGTH
L1	N89°53'21"E	195.03'
L2	N89°26'45"E	200.90'

NAD 83 (TARGET BOTTOM HOLE)	
LATITUDE	= 39°39'44.34" (39.662317)
LONGITUDE	= 108°10'07.23" (108.168675)
NAD 27 (TARGET BOTTOM HOLE)	
LATITUDE	= 39°39'44.43" (39.662342)
LONGITUDE	= 108°10'04.94" (108.168039)

1917 Brass Cap
Lat: 39.651256
Long: 108.183561

1953 Brass Cap
0.2' High, Pile of
Stones, Fence
Lat: 39.651322
Long: 108.164147

1970 Brass Cap
0.3' High, Fence
Corner
Lat: 39.651286
Long: 108.173514

1917 Brass Cap
0.5' High, Pile of
Stones, Fence
Lat: 39.651322
Long: 108.164839

NOTE:
THE PROPOSED BOTTOM HOLE BEARS
S23°30'33"W 2082.59' FROM THE PROPOSED
WELL HEAD WHICH IS LOCATED IN THE SE 1/4
SE 1/4 OF SECTION 28, T4S, R96W, 6th P.M.
AT A DISTANCE OF 544' FSL 446' FEL.

DW 8608A-33 P28 496
TARGET BOTTOM HOLE

33

COC065556

1970 Brass Cap
0.2' High, Mound
of Stones
Lat: 39.666053
Long: 108.182875

1970 Brass Cap
0.7' High, Mound
of Stones
Lat: 39.666058
Long: 108.173508

1970 Brass Cap
0.4' High, Steel
Post
Lat: 39.658528
Long: 108.272972

Brass Cap, 0.5'
High, Pile of
Stones, Steel Post
Lat: 39.658819
Long: 108.164128