

T4S, R96W, 6th P.M.

Encana OIL & GAS (USA) INC.

Well location, DW 8606B-33 P28 496 (SURFACE LOCATION), located as shown in the SE 1/4 SE 1/4 of Section 28, T4S, R96W, 6th P.M., Garfield County, Colorado.

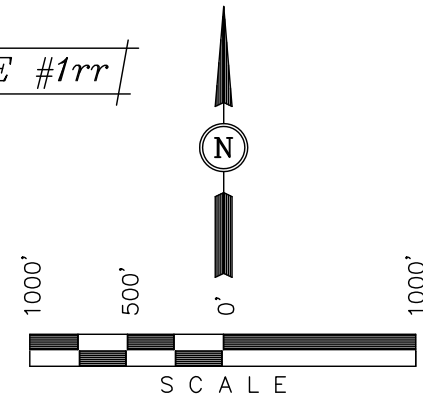
BASIS OF ELEVATION

BENCH MARK (H79) LOCATED IN THE NE 1/4 OF SECTION 35, T4S, R98W, 6th P.M. TAKEN FROM THE BULL FORK QUADRANGLE, COLORADO, 7.5 MINUTE SERIES (TOPO GRAPHICAL MAP) PUBLISHED BY THE UNITED STATES DEPARTMENT OF THE INTERIOR, GEOLOGICAL SURVEY. SAID ELEVATION IS MARKED AS BEING 8535 FEET.

BASIS OF BEARINGS

BASIS OF BEARINGS IS A G.P.S. OBSERVATION.

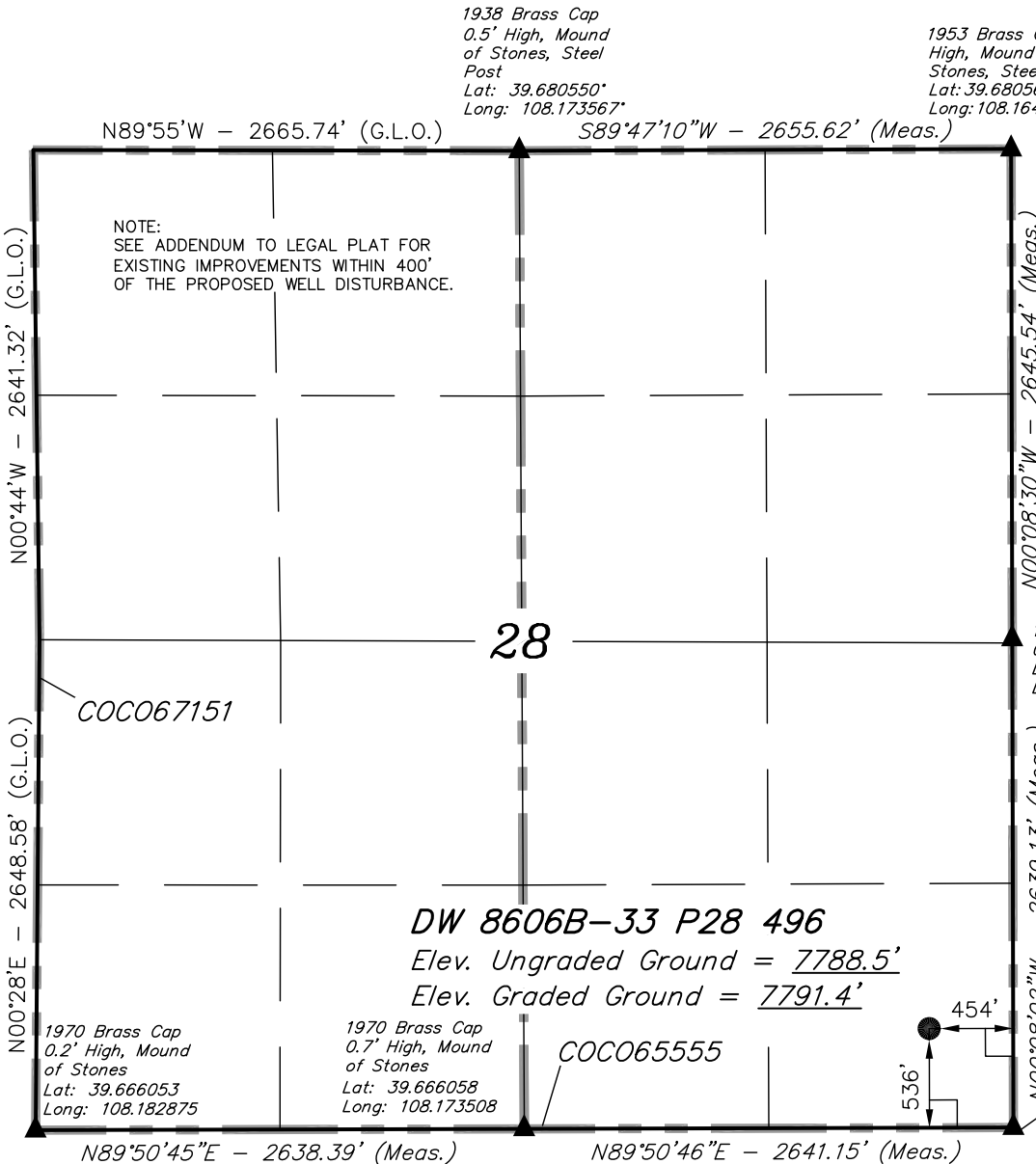
FIGURE #1rr



CERTIFICATE

THIS IS TO CERTIFY THAT THE ABOVE PLAT WAS PREPARED FROM FIELD NOTES OF ACTUAL SURVEYS MADE BY ME OR UNDER MY SUPERVISION AND THAT THE SAME ARE TRUE AND CORRECT TO THE BEST OF MY KNOWLEDGE AND BELIEF.

REGISTERED LAND SURVEYOR
REGISTRATION NO. 17492
STATE OF COLORADO



LEGEND:

- = 90° SYMBOL
- = PROPOSED WELL HEAD.
- = SECTION CORNERS LOCATED.

NOTE:
THE PROPOSED BOTTOM HOLE FOR THIS WELL IS LOCATED IN THE SE 1/4 NW 1/4 OF SECTION 33, T4S, R96W, 6th P.M. AT A DISTANCE OF 1691' FNL 1328' FWL. IT BEARS S57°20'44\"W 4144.37' FROM THE PROPOSED WELL HEAD.

PDOP = 1.6

NAD 83 (SURFACE LOCATION)	
LATITUDE	= 39°40'03.11\" (39.667531)
LONGITUDE	= 108°09'56.66\" (108.165739)
NAD 27 (SURFACE LOCATION)	
LATITUDE	= 39°40'03.20\" (39.667556)
LONGITUDE	= 108°09'54.37\" (108.165103)

REVISED: 01-25-11
REVISED: 12-13-10

UINTAH ENGINEERING & LAND SURVEYING
85 SOUTH 200 EAST - VERNAL, UTAH 84078
(435) 789-1017

SCALE 1\" = 1000'	DATE SURVEYED: 09-17-10	DATE DRAWN: 11-16-10
PARTY B.J. B.H. C.H.	REFERENCES G.L.O. PLAT	
WEATHER COOL	FILE Encana OIL & GAS (USA) INC.	

T4S, R96W, 6th P.M.

DW 8606B-33
P28 496
Surface Hole

1953 Brass Cap
0.9' High, Steel
Post
Lat: 39.666061
Long: 108.164131

Encana OIL & GAS (USA) INC.

Well location, DW 8606B-33 P28 496 (TARGET BOTTOM HOLE), located as shown in the SE 1/4 NE 1/4 of Section 33, T4S, R96W, 6th P.M., Garfield County, Colorado.

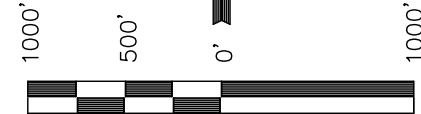
BASIS OF ELEVATION

BENCH MARK (H79) LOCATED IN THE NE 1/4 OF SECTION 35, T4S, R98W, 6th P.M. TAKEN FROM THE BULL FORK QUADRANGLE, COLORADO, 7.5 MINUTE SERIES (TOPO GRAPHICAL MAP) PUBLISHED BY THE UNITED STATES DEPARTMENT OF THE INTERIOR, GEOLOGICAL SURVEY. SAID ELEVATION IS MARKED AS BEING 8535 FEET.

BASIS OF BEARINGS

BASIS OF BEARINGS IS A G.P.S. OBSERVATION.

FIGURE #1ss



SCALE

CERTIFICATE

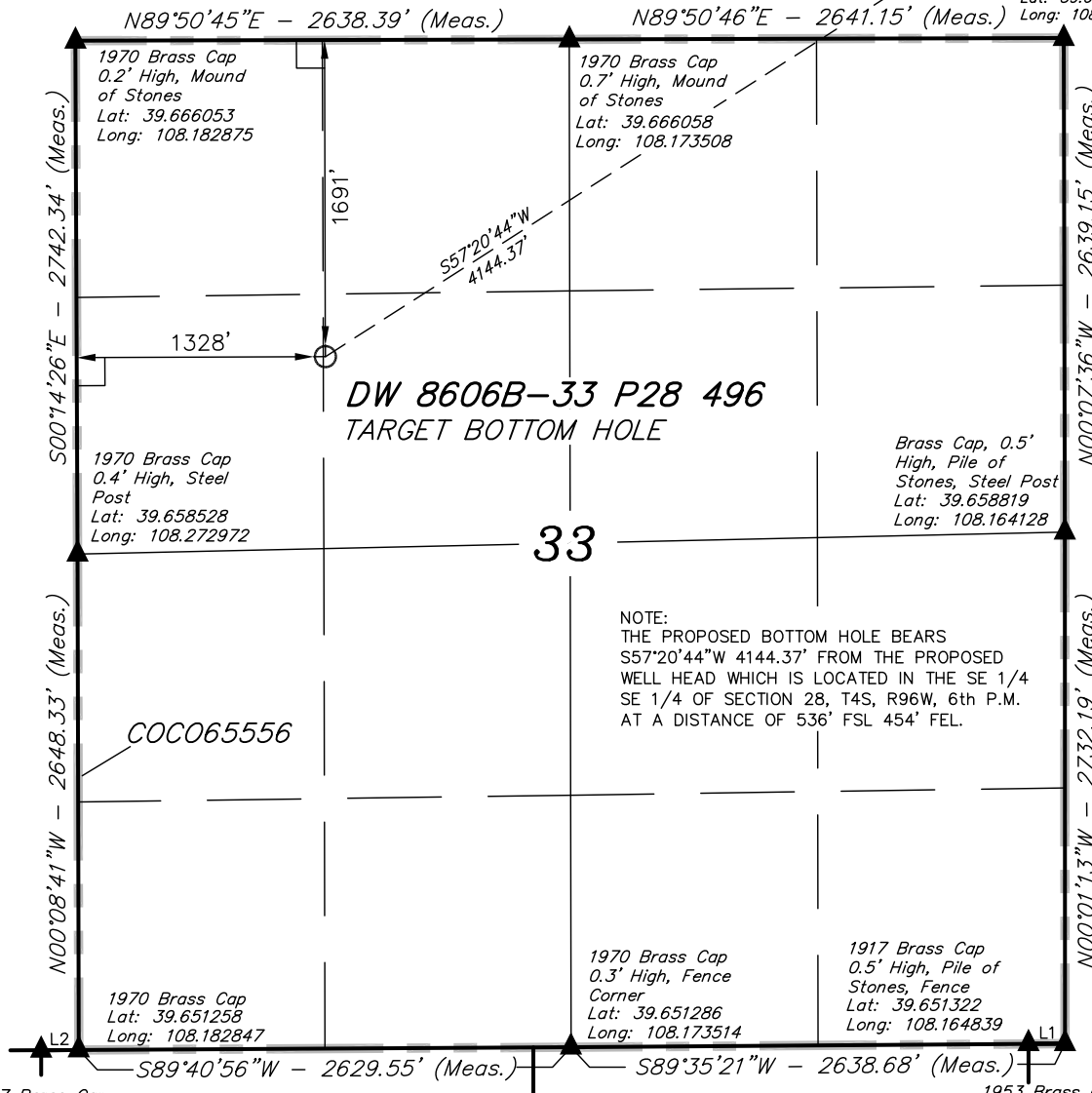
THIS IS TO CERTIFY THAT THE ABOVE PLAT WAS PREPARED FROM FIELD NOTES OF ACTUAL SURVEYS MADE BY ME OR UNDER MY SUPERVISION AND THAT THE SAME ARE TRUE AND CORRECT TO THE BEST OF MY KNOWLEDGE AND BELIEF.

17492
REGISTERED LAND SURVEYOR
REGISTRATION NO. 17492
STATE OF COLORADO

REVISED: 01-25-11
REVISED: 12-13-10

UINTAH ENGINEERING & LAND SURVEYING
85 SOUTH 200 EAST - VERNAL, UTAH 84078
(435) 789-1017

SCALE 1" = 1000'	DATE SURVEYED: 09-17-10	DATE DRAWN: 11-16-10
PARTY B.J. B.H. C.H.	REFERENCES G.L.O. PLAT	
WEATHER COOL	FILE Encana OIL & GAS (USA) INC.	



1917 Brass Cap
Lat: 39.651256
Long: 108.183561

1953 Brass Cap
0.2' High, Pile of
Stones, Fence
Lat: 39.651322
Long: 108.164147

LEGEND:

- └─┘ = 90° SYMBOL
- = PROPOSED WELL HEAD.
- ▲ = SECTION CORNERS LOCATED.

LINE TABLE		
LINE	BEARING	LENGTH
L1	N89°53'21"E	195.03'
L2	N89°26'45"E	200.90'

NAD 83 (TARGET BOTTOM HOLE)	
LATITUDE	= 39°39'41.09" (39.661414)
LONGITUDE	= 108°10'41.32" (108.178144)
NAD 27 (TARGET BOTTOM HOLE)	
LATITUDE	= 39°39'41.18" (39.661439)
LONGITUDE	= 108°10'39.03" (108.177508)