

T4S, R96W, 6th P.M.

Encana OIL & GAS (USA) INC.

Well location, DW 8603F-33 P28 496 (SURFACE LOCATION), located as shown in the SE 1/4 SE 1/4 of Section 28, T4S, R96W, 6th P.M., Garfield County, Colorado.

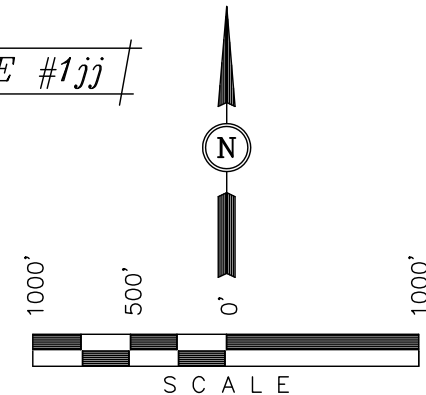
BASIS OF ELEVATION

BENCH MARK (H79) LOCATED IN THE NE 1/4 OF SECTION 35, T4S, R98W, 6th P.M. TAKEN FROM THE BULL FORK QUADRANGLE, COLORADO, 7.5 MINUTE SERIES (TOPO GRAPHICAL MAP) PUBLISHED BY THE UNITED STATES DEPARTMENT OF THE INTERIOR, GEOLOGICAL SURVEY. SAID ELEVATION IS MARKED AS BEING 8535 FEET.

BASIS OF BEARINGS

BASIS OF BEARINGS IS A G.P.S. OBSERVATION.

FIGURE #1jj



CERTIFICATE

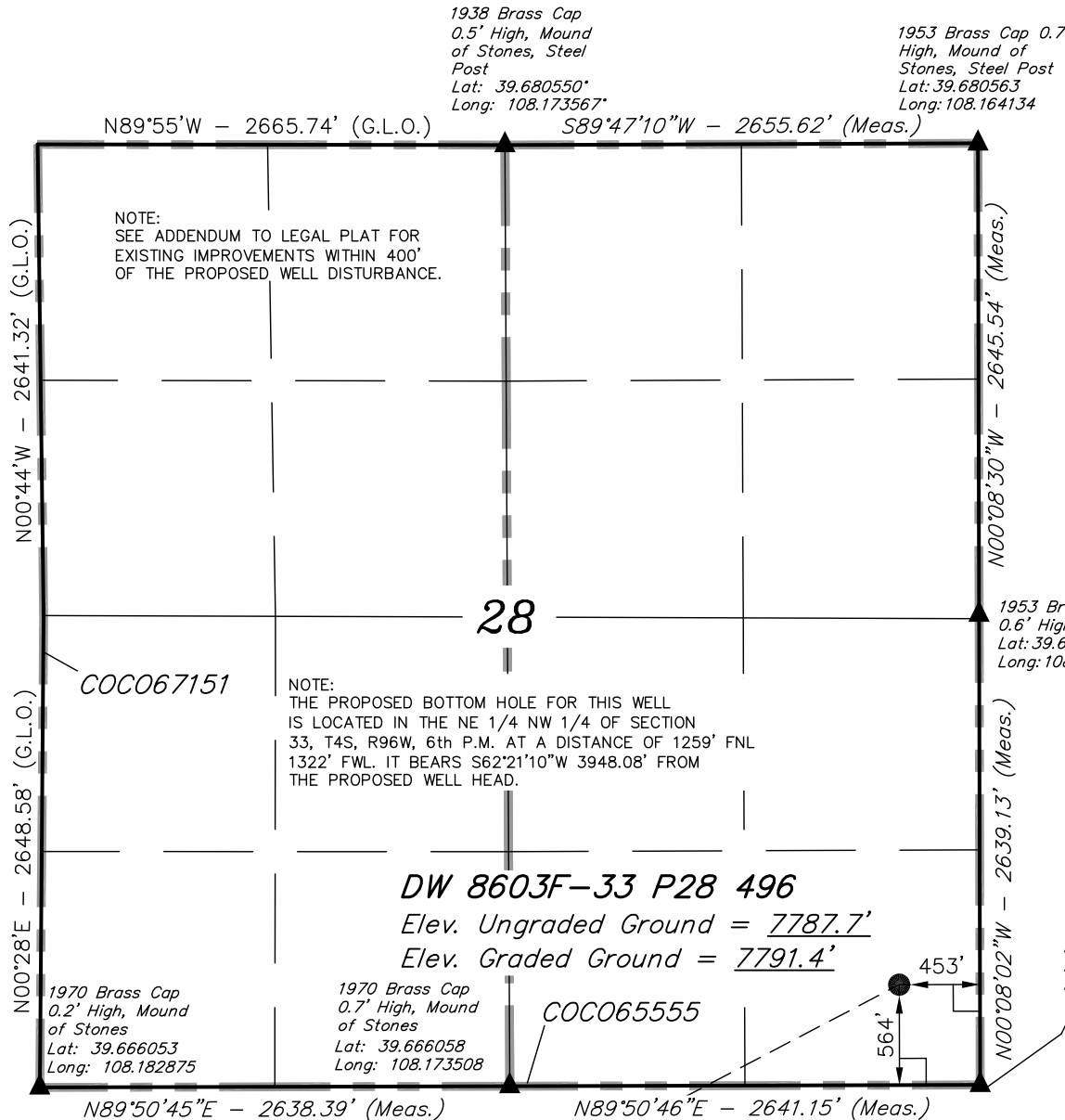
THIS IS TO CERTIFY THAT THE ABOVE PLAT WAS PREPARED FROM FIELD NOTES OF ACTUAL SURVEYS MADE BY ME OR UNDER MY SUPERVISION AND THAT THE SAME ARE TRUE AND CORRECT TO THE BEST OF MY KNOWLEDGE AND BELIEF.

REGISTERED LAND SURVEYOR
REGISTRATION NO. 17492
STATE OF COLORADO

REVISED: 01-25-11
REVISED: 12-13-10

UINTAH ENGINEERING & LAND SURVEYING
85 SOUTH 200 EAST - VERNAL, UTAH 84078
(435) 789-1017

SCALE 1" = 1000'	DATE SURVEYED: 09-17-10	DATE DRAWN: 11-16-10
PARTY B.J. B.H. C.H.	REFERENCES G.L.O. PLAT	
WEATHER COOL	FILE Encana OIL & GAS (USA) INC.	



LEGEND:

- = 90° SYMBOL
- = PROPOSED WELL HEAD
- = Bottom Hole
- = SECTION CORNERS LOCATED.

PDOP = 0.8

NAD 83 (SURFACE LOCATION)	
LATITUDE =	39°40'03.39" (39.667608)
LONGITUDE =	108°09'56.66" (108.165739)
NAD 27 (SURFACE LOCATION)	
LATITUDE =	39°40'03.48" (39.667633)
LONGITUDE =	108°09'54.37" (108.165103)

T4S, R96W, 6th P.M.

DW 8603F-33

P28 496

Surface Hole

1953 Brass Cap

0.9' High, Steel

Post

Lat: 39.666061

Long: 108.164131

Encana OIL & GAS (USA) INC.

Well location, DW 8603F-33 P28 496 (TARGET BOTTOM HOLE), located as shown in the NE 1/4 NW 1/4 of Section 33, T4S, R96W, 6th P.M., Garfield County, Colorado.

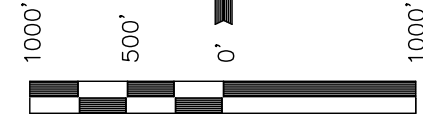
BASIS OF ELEVATION

BENCH MARK (H79) LOCATED IN THE NE 1/4 OF SECTION 35, T4S, R98W, 6th P.M. TAKEN FROM THE BULL FORK QUADRANGLE, COLORADO, 7.5 MINUTE SERIES (TOPO GRAPHICAL MAP) PUBLISHED BY THE UNITED STATES DEPARTMENT OF THE INTERIOR, GEOLOGICAL SURVEY. SAID ELEVATION IS MARKED AS BEING 8535 FEET.

BASIS OF BEARINGS

BASIS OF BEARINGS IS A G.P.S. OBSERVATION.

FIGURE #1kk



SCALE

CERTIFICATE

THIS IS TO CERTIFY THAT THE ABOVE PLAT WAS PREPARED FROM FIELD NOTES OF ACTUAL SURVEYS MADE BY ME OR UNDER MY SUPERVISION AND THAT THE SAME ARE TRUE AND CORRECT TO THE BEST OF MY KNOWLEDGE AND BELIEF.

REGISTERED LAND SURVEYOR
REGISTRATION NO. 17492
STATE OF COLORADO

REVISED: 01-25-11

REVISED: 12-13-10

UINTAH ENGINEERING & LAND SURVEYING

85 SOUTH 200 EAST - VERNAL, UTAH 84078

(435) 789-1017

SCALE
1" = 1000'

DATE SURVEYED:
09-17-10

DATE DRAWN:
11-16-10

PARTY
B.J. B.H. C.H.

REFERENCES
G.L.O. PLAT

WEATHER
COOL

FILE
Encana OIL & GAS (USA) INC.

1917 Brass Cap
Lat: 39.651258
Long: 108.183561

LINE TABLE		
LINE	BEARING	LENGTH
L1	N89°53'21"E	195.03'
L2	N89°26'45"E	200.90'

LEGEND:

└─┘ = 90° SYMBOL

● = PROPOSED WELL HEAD.

▲ = SECTION CORNERS LOCATED.

NOTE:
THE PROPOSED BOTTOM HOLE BEARS
S62°21'10"W 3948.08' FROM THE PROPOSED
WELL HEAD WHICH IS LOCATED IN THE SE 1/4
SE 1/4 OF SECTION 28, T4S, R96W, 6th P.M.
AT A DISTANCE OF 564' FSL 453' FEL.

NAD 83 (TARGET BOTTOM HOLE)

LATITUDE = 39°39'45.36" (39.662600)

LONGITUDE = 108°10'41.41" (108.178169)

NAD 27 (TARGET BOTTOM HOLE)

LATITUDE = 39°39'45.45" (39.662625)

LONGITUDE = 108°10'39.12" (108.177533)