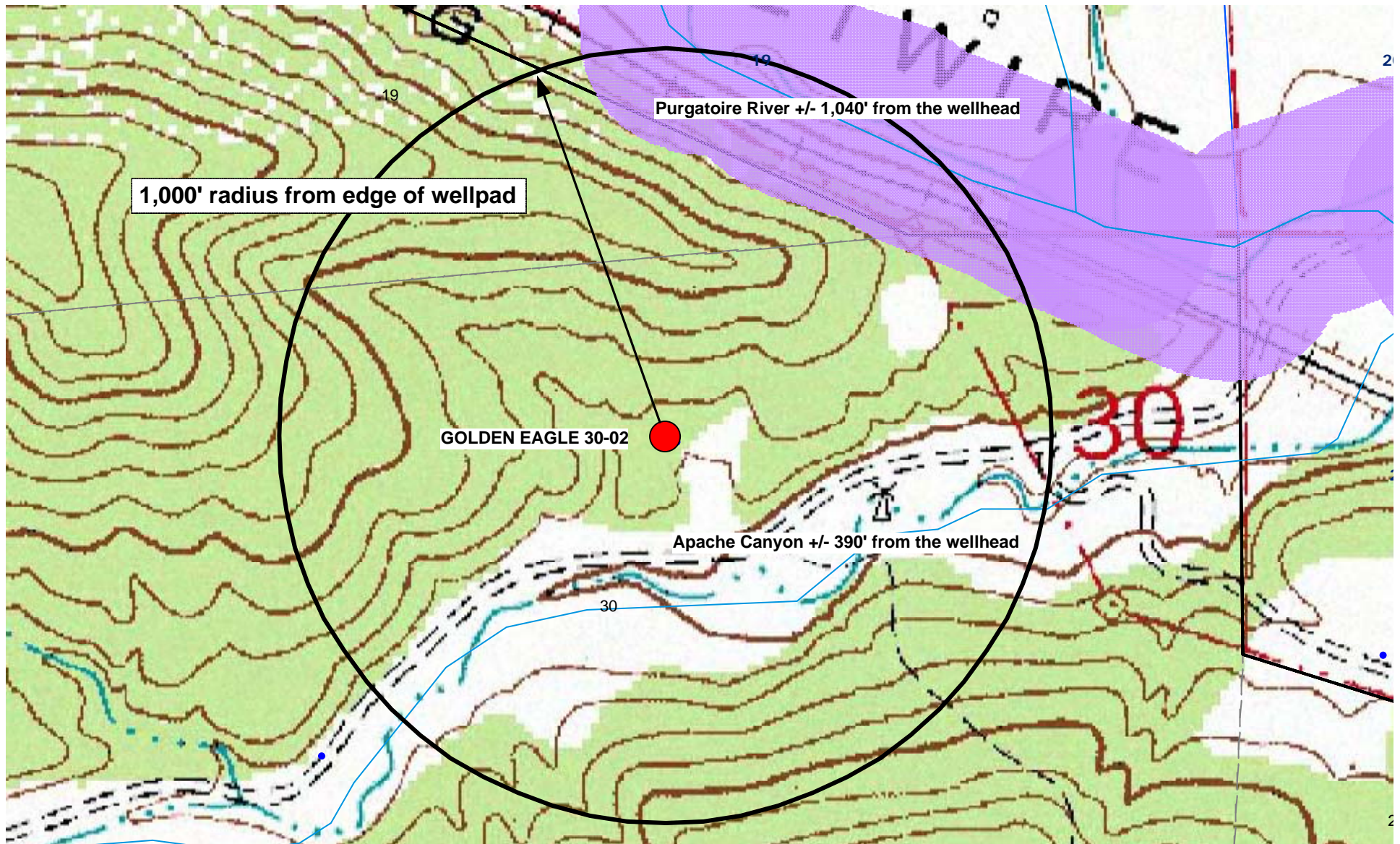


# HYDROLOGY MAP



- Water Wells
- Lakes
- Major Rivers
- Streams
- 300-Foot Stream Buffer

GOLDEN EAGLE 30-02  
423' FNL & 1895' FEL  
Sec. 30, T33S, R67W, 6<sup>th</sup> P.M.

N  
↑  
Scale 1" = 400'