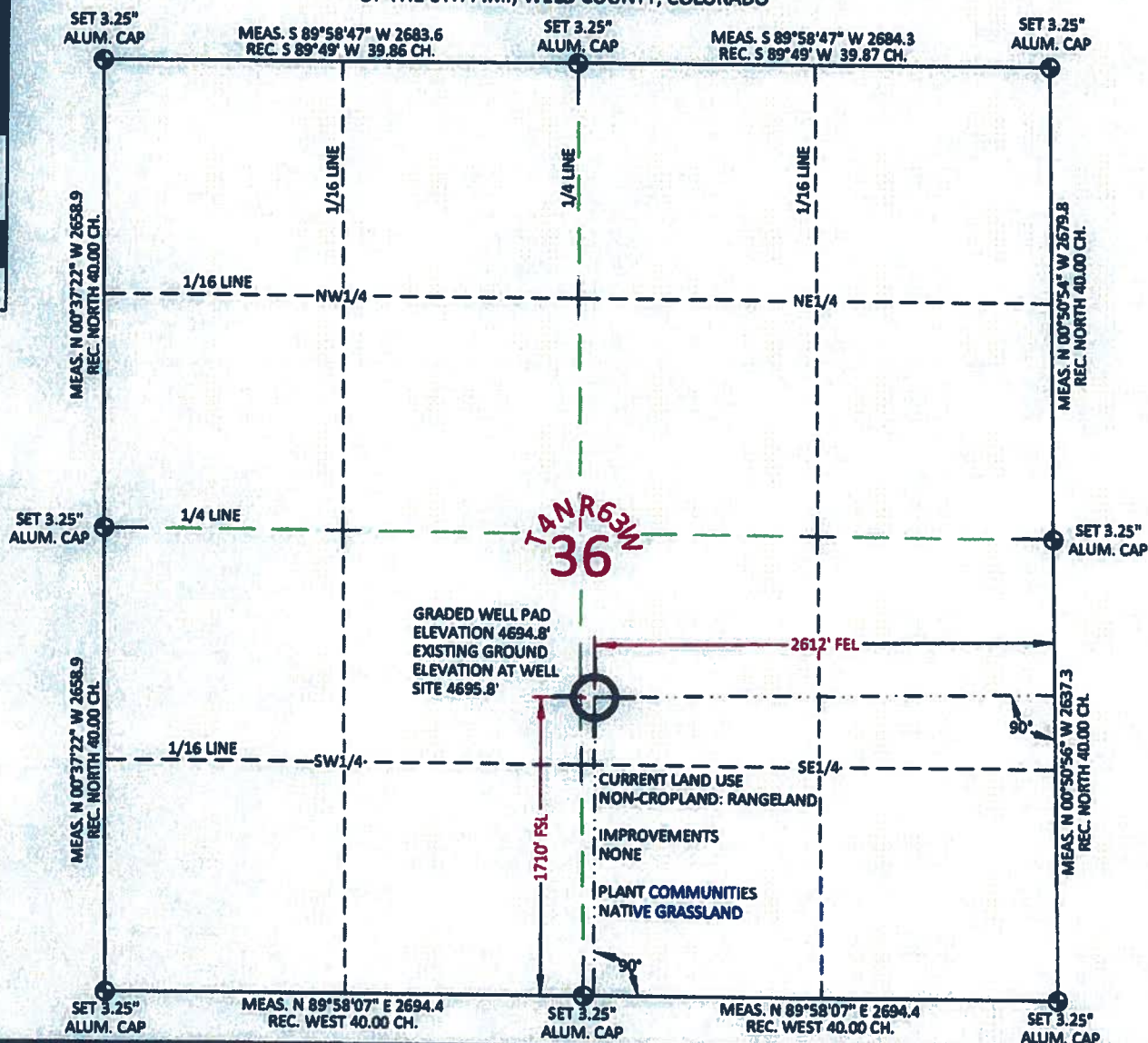


MARATHON OIL CO. FRENCH LAKE 4-63-36-1M
 LOCATED WITHIN THE NW1/4 SE1/4 SECTION 36 T4N R63W
 OF THE 6TH P.M., WELD COUNTY, COLORADO



MONITOR WELL LOCATION

LAT.	40.265852°
LONG.	104.385656°
LAT.	40.265871°
LONG.	104.385146°
LAT.	40°15'57.07"
LONG.	104°23'08.36"
LAT.	40°15'57.14"
LONG.	104°23'06.53"
NORTH	1341645.32
EAST	3310962.29
NORTH	341648.00
EAST	2311112.66

FOOTAGE: 2612' FEL - 1710' FSL

GROUND ELEV. 4695.8'

INST. OPTR. ADAM HARMON

MEASURE DATE: 01/28/2011

PDOP: 1.7

I, William H. Dolinar, Professional Land Surveyor, CO. RLS # 38070 hereby certify that (in accordance with a request from Anna Walls with Marathon Oil Co, 5555 San Felipe, Houston, TX 77056) I and or personnel under my direction made a survey on the 28th day of January 2011, for the Monitoring Well Location and Elevation of Marathon Oil Co. FRENCH LAKE 4-63-36-1M being located within the NW1/4 SE1/4 Section 36, T4N R63W, of the 6th P.M., Weld County, State of Colorado.

- All bearings and distances are GRID based on the Colorado State Plane Coordinate System, North Zone, North American Datum 1983 from GPS observations occupying a WHS control point (5/8" rebar) and having the Location and Elevation derived from an Opus Solution.
- Vertical Datum used is of NAVD 88.
- Record Bearings and Distances as shown are based on the General Land Office Survey plat approved on the 16th day of December 1872.

CONFIDENTIALITY NOTES:

The information contained in this plot is legally privileged and confidential information intended only for the use of the recipients. If you are not the intended recipients, you are hereby notified that any use, dissemination, distribution or copying of this information is strictly prohibited.



WILLIAM H. SMITH & ASSOCIATES P.C.
 SURVEYING CONSULTANTS
 50 EAST SECOND NORTH
 GREEN RIVER, WY 82501
 PHONE 307-875-3638
 307-875-3639
 www.williamsmithpc.com

DRAWN BY: CED

CHECKED BY: WHD

PROJECT NO: 463361M

JOB NO: 2011001

REVISIONS:

LEGEND

- ⊕ FOUND CORNER
- ⊗ CALCULATED CORNER
- NOTHING FOUND

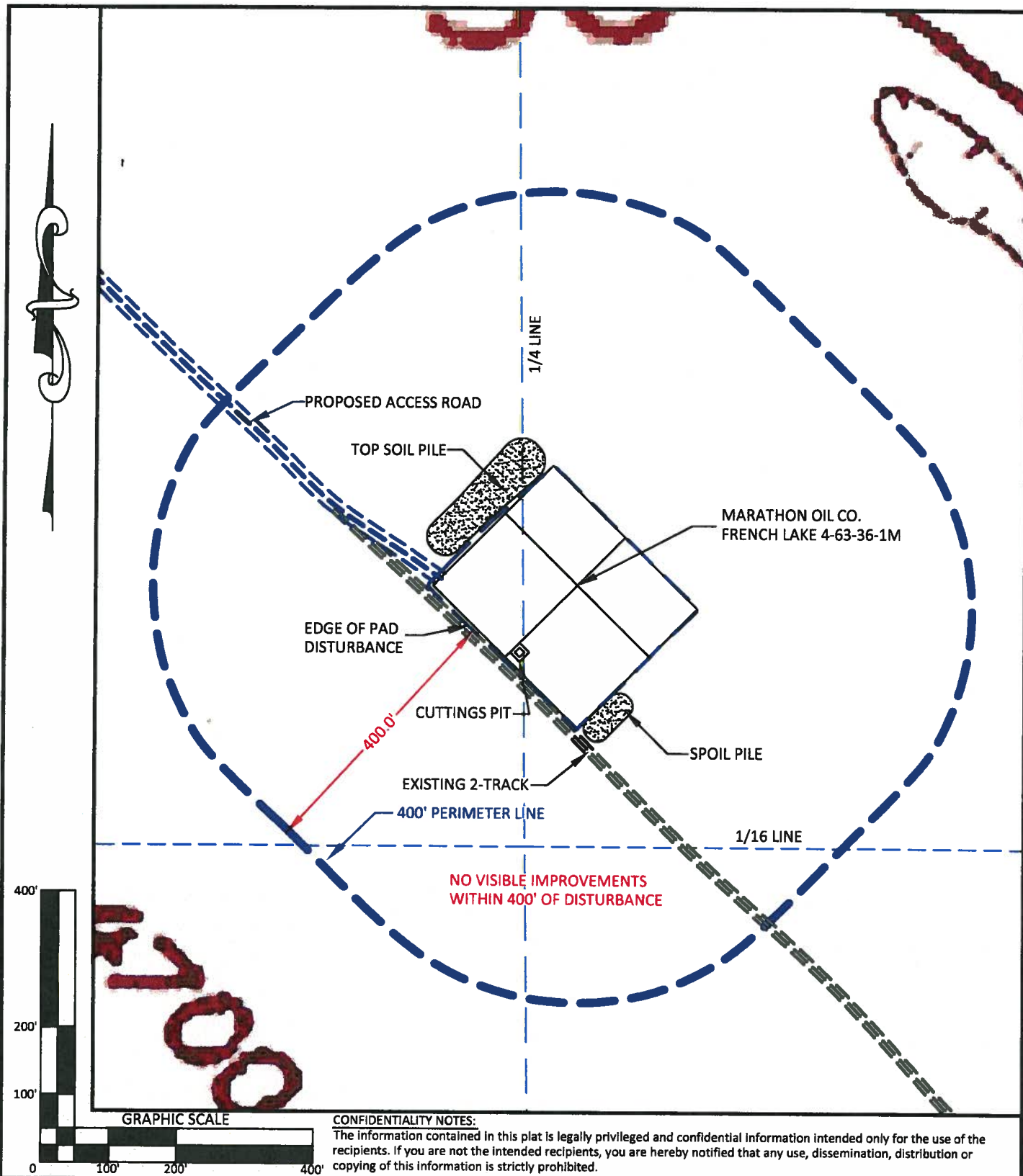
LOCATION:
 FRENCH LAKE 4-63-36-1M
 WITHIN THE NW/4
 SE/4 SECTION 36,
 T 4 N, R 63 W,
 6TH PM.
 WELD COUNTY,
 COLORADO

MARATHON OIL COMPANY
 PO BOX 3128, HOUSTON TX, 77253
 5555 SAN FELIPE, HOUSTON TX, 77056

MONITORING WELL PLAT

SCALE: 1"=1000'
 DATE: 01/30/2011

EXHIBIT "A"
 SHEET 1 OF 1



**WILLIAM H. SMITH
& ASSOCIATES P.C.**

SURVEYING CONSULTANTS
250 EAST SECOND NORTH PHONE: 307-875-3638
GREEN RIVER, WY 307-875-3639
www.whsmithpc.com

DRAWN BY: CED

CHECKED BY: WHD

PROJECT NO: 1068161M

JOB NO: 2011001

REVISIONS:

LEGEND

400' PERIMETER ————
PROPOSED ACCESS ————
EXISTING 2-TRACK ————

LOCATION:

FRENCH LAKE
4-63-36-1M
WITHIN THE NW/4
SE/4 SECTION 36,
T 4 N, R 63 W,
6TH PM.
WELD COUNTY,
COLORADO

MARATHON OIL COMPANY
PO BOX 3128, HOUSTON TX, 77253
5555 SAN FELIPE, HOUSTON TX, 77056

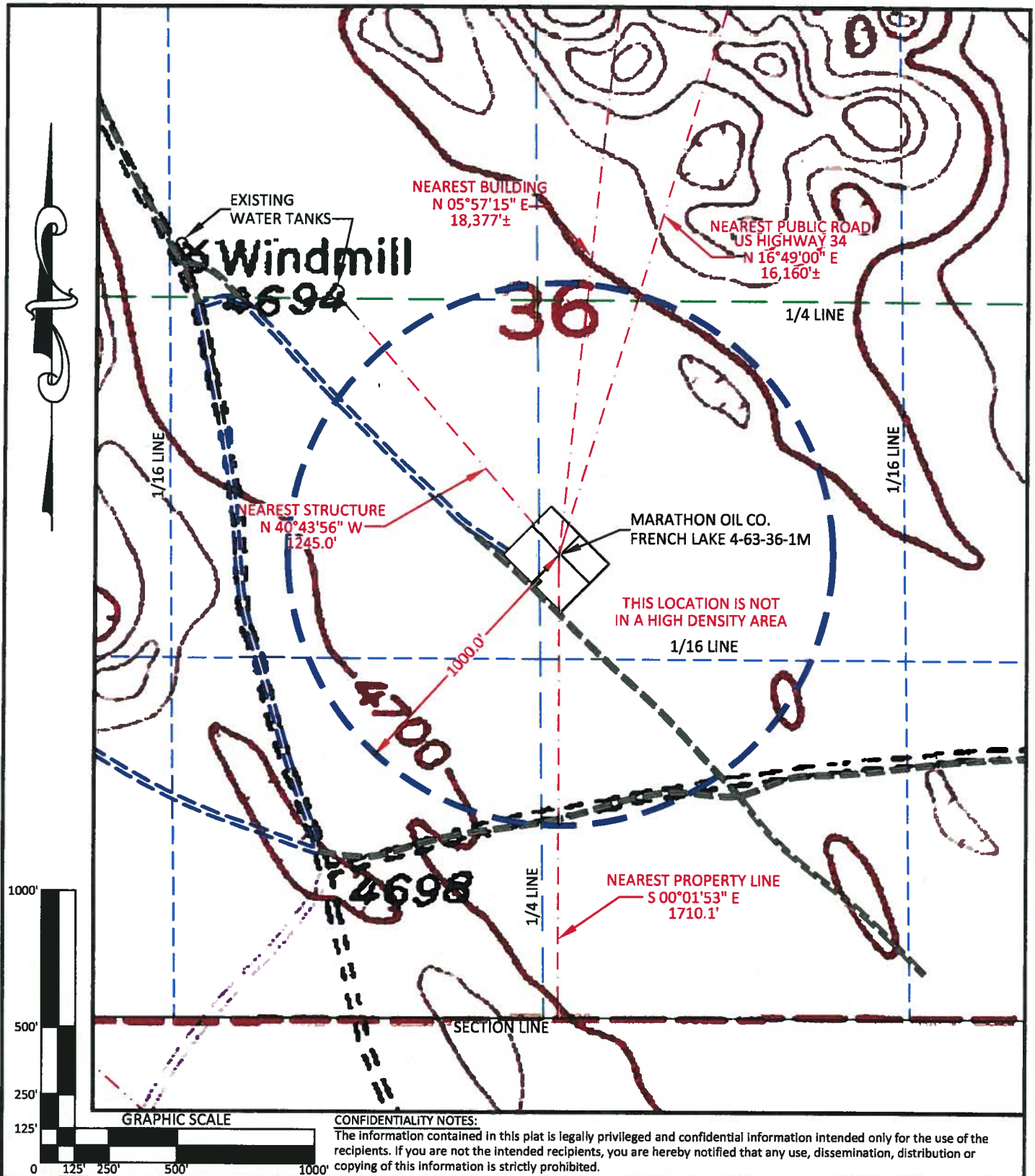
LOCATION DRAWING

SCALE: 1"=200'

DATE: 01/31/2011

EXHIBIT "C"

SHEET 2 OF 10



CONFIDENTIALITY NOTES:

The information contained in this plat is legally privileged and confidential information intended only for the use of the recipients. If you are not the intended recipients, you are hereby notified that any use, dissemination, distribution or copying of this information is strictly prohibited.



**WILLIAM H. SMITH
& ASSOCIATES P.C.**

SURVEYING CONSULTANTS
150 EAST SECOND NORTH PHONE: 307-875-3638
GREEN RIVER, WY 307-875-3639
www.whsmithpc.com

DRAWN BY: CED

CHECKED BY: WHD

PROJECT NO: 1068161M

JOB NO: 2011001

REVISIONS:

LEGEND

1000' RADIUS
PROPOSED ACCESS
EXISTING 2-TRACK

LOCATION:

FRENCH LAKE 4-63-36-1M
WITHIN THE NW/4
SE/4 SECTION 36,
T 4 N, R 63 W,
6TH PM.
WELD COUNTY,
COLORADO

MARATHON OIL COMPANY

PO BOX 3128, HOUSTON TX, 77253
5555 SAN FELIPE, HOUSTON TX, 77056

CULTURE MAP

SCALE: 1"=500'

EXHIBIT "H"

DATE: 01/31/2011

SHEET 7 OF 10