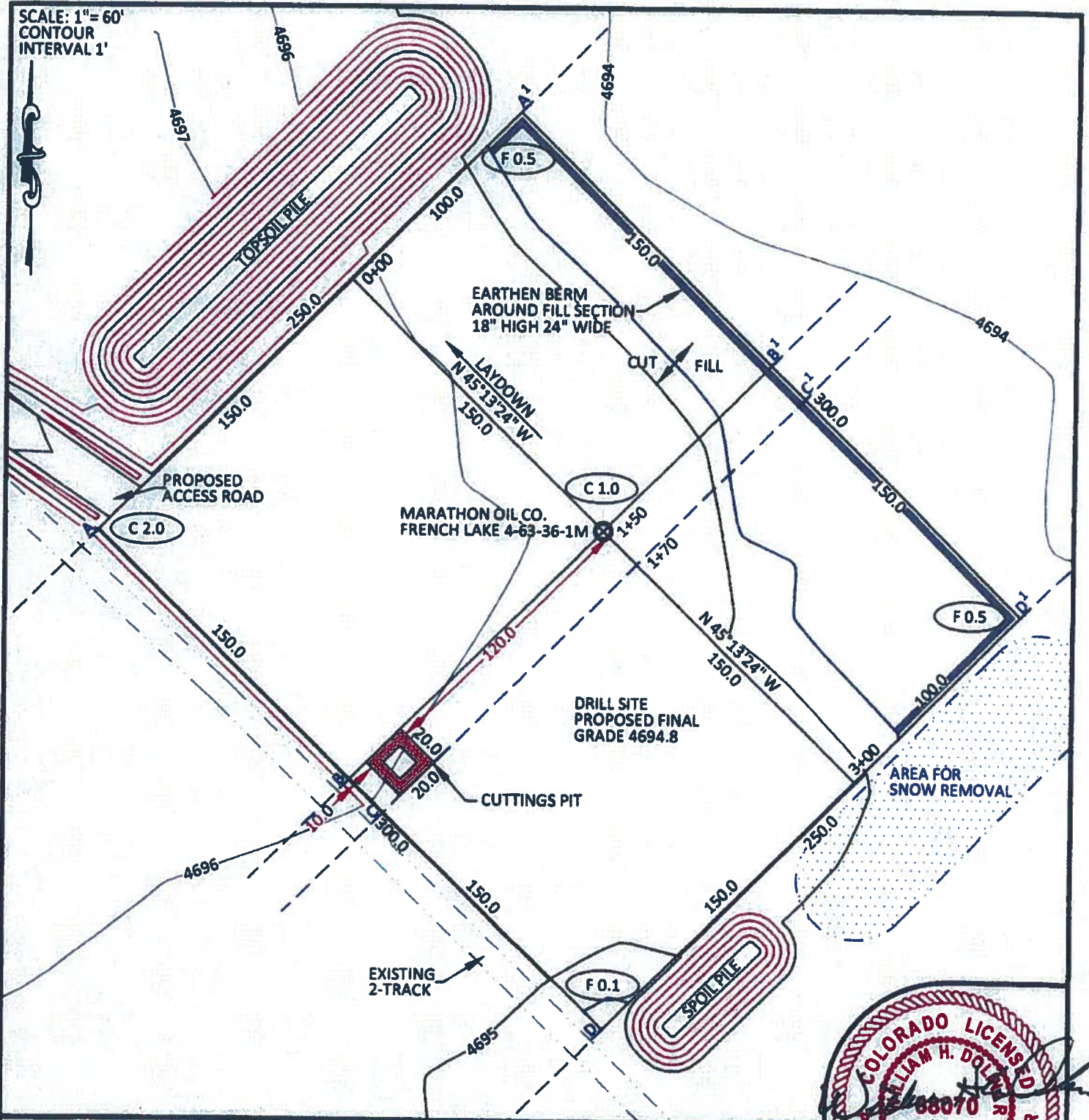


SCALE: 1" = 60'
CONTOUR
INTERVAL 1'



CUTTINGS PIT DATA

SIZE	20' X 20' X 10'
SLOPE	0.5:1
CAPACITY	2,322 CU. FT. 86 CU. YDS.

CONFIDENTIALITY NOTES:

The information contained in this plat is legally privileged and confidential information intended only for the use of the recipients. If you are not the intended recipients, you are hereby notified that any use, dissemination, distribution or copying of this information is strictly prohibited.

**WILLIAM H. SMITH
& ASSOCIATES P.C.
SURVEYING CONSULTANTS**

300 EAST SECOND NORTH GREEN RIVER, WY
PHONE: 307-875-3638
307-875-3630
www.whsmithpc.com

DRAWN BY: CED	CHECKED BY: WHD
PROJECT NO: 463361M	JOB NO: 2011001
REVISIONS:	

CONSTRUCTION DATA

CUT SLOPE:	3:1
FILL SLOPE:	3:1
TOTAL CUT:	2,624 CU. YDS.
TOTAL FILL:	503 CU. YDS.
TOP SOIL AT 8"	1,929 CU. YDS.
SPOIL	193 CU. YDS.
DISTURBED AREA	77,723 SQ. FT.
DISTURBED AREA	1.78 ACRES

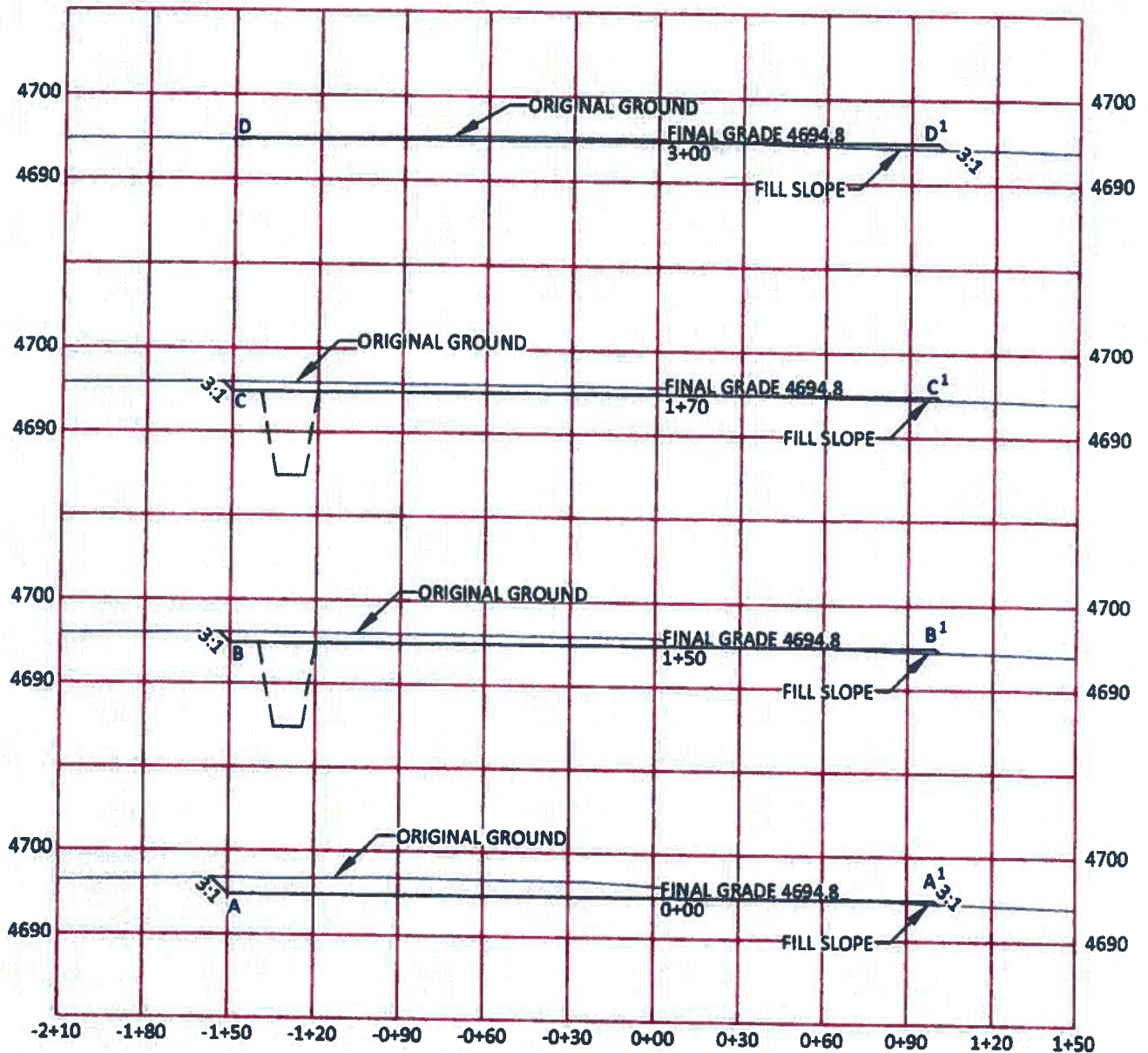
LOCATION:

FRENCH LAKE
4-63-36-1M
WITHIN THE NW/4
SE/4 SECTION 36,
T 4 N, R 63 W,
6TH PM.
WELD COUNTY,
COLORADO

MARATHON OIL COMPANY
PO BOX 3128, HOUSTON TX, 77253
5555 SAN FELIPE, HOUSTON TX, 77056

CONSTRUCTION LAYOUT

2612' FEL	1710' FSL
SCALE: 1"=60'	EXHIBIT "I"
DATE: 01/30/2011	SHEET 8 OF 10



CUTTINGS PIT DATA

SIZE	20' X 20' X 10'
SLOPE	0.5:1
CAPACITY	2,322 CU. FT. 86 CU. YDS.

HORIZONTAL SCALE: 1"=60'
VERTICAL SCALE: 1"=20'

CONFIDENTIALITY NOTES:

The information contained in this plot is legally privileged and confidential information intended only for the use of the recipients. If you are not the intended recipients, you are hereby notified that any use, dissemination, distribution or copying of this information is strictly prohibited.

WILLIAM H. SMITH & ASSOCIATES P.C.

SURVEYING CONSULTANTS
50 EAST SECOND NORTH PHONE: 307-875-3638
GREEN RIVER, WY 307-875-3639
www.whtsmthpc.com

DRAWN BY: CED	CHECKED BY: WHD
PROJECT NO: 463361M	JOB NO: 2011001
REVISIONS:	

CONSTRUCTION DATA

CUT SLOPE:	3:1
FILL SLOPE:	3:1
TOTAL CUT:	2,624 CU. YDS.
TOTAL FILL:	503 CU. YDS.
TOP SOIL AT 8"	1,929 CU. YDS.
SPOIL	193 CU. YDS.
DISTURBED AREA	77,723 SQ. FT.
DISTURBED AREA	1.78 ACRES

LOCATION:

FRENCH LAKE
4-63-36-1M
WITHIN THE NW/4
SE/4 SECTION 36,
T 4 N, R 63 W,
6TH PM.
WELD COUNTY,
COLORADO

MARATHON OIL COMPANY
PO BOX 3128, HOUSTON TX, 77253
5555 SAN FELIPE, HOUSTON TX, 77056

CONSTRUCTION LAYOUT CROSS SECTIONS

SCALE: NOTED	EXHIBIT "J"
DATE: 01/30/2011	SHEET 9 OF 10



CONFIDENTIALITY NOTES:

The information contained in this plat is legally privileged and confidential information intended only for the use of the recipients. If you are not the intended recipients, you are hereby notified that any use, dissemination, distribution or copying of this information is strictly prohibited.

WILLIAM H. SMITH & ASSOCIATES P.C.
 SURVEYING CONSULTANTS
 150 EAST SECOND NORTH GREEN RIVER, WY
 PHONE: 307-875-3638 307-875-3639
 www.williamsmithpc.com

CUTTINGS PIT DATA	
SIZE	20' X 20' X 10'
SLOPE	0.5:1
CAPACITY	2,322 CU. FT. 86 CU. YDS.

LOCATION:
 FRENCH LAKE
 4-63-36-1M
 WITHIN THE NW/4
 SE/4 SECTION 36,
 T 4 N, R 63 W,
 6TH PM.
 WELD COUNTY,
 COLORADO

MARATHON OIL COMPANY
 PO BOX 3128, HOUSTON TX, 77253
 5555 SAN FELIPE, HOUSTON TX, 77056

DRAWN BY: CED CHECKED BY: WHD
 PROJECT NO: 463361M JOB NO: 2011001

REVISIONS:

DRILLING FACILITIES
 SCALE: 1"=50'
 DATE: 01/30/2011 EXHIBIT "K"
 SHEET 10 OF 10