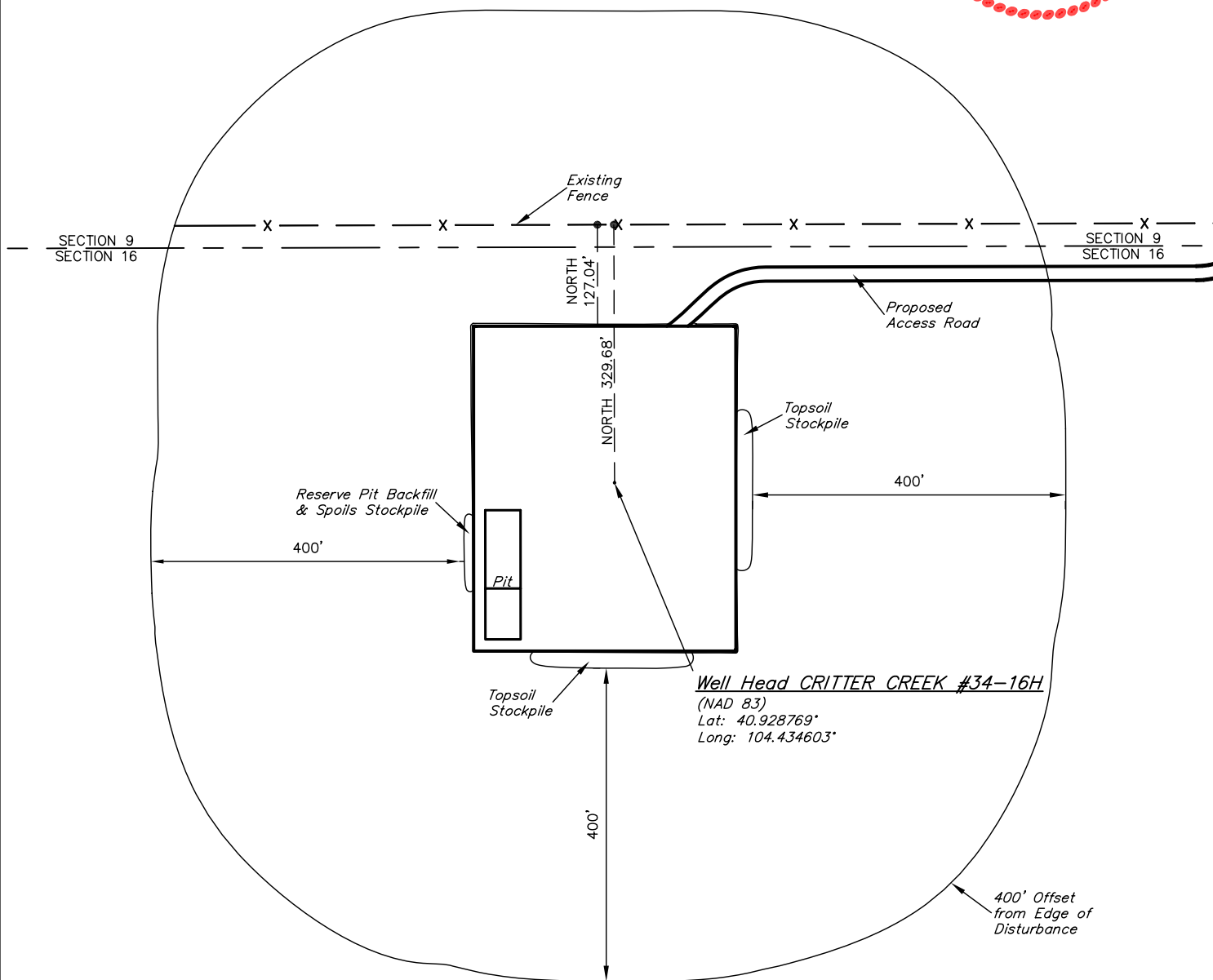


EOG RESOURCES, INC.  
ADDENDUM TO LEGAL PLAT FOR  
CRITTER CREEK #34-16H  
SECTION 16, T11N, R63W, 6th. P.M.  
301' FNL 1700' FEL



SCALE: 1" = 200'  
DATE: 01-20-11  
DRAWN BY: J.I.

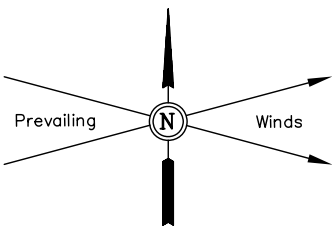


# EOG RESOURCES, INC.

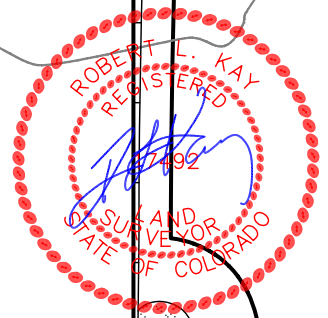
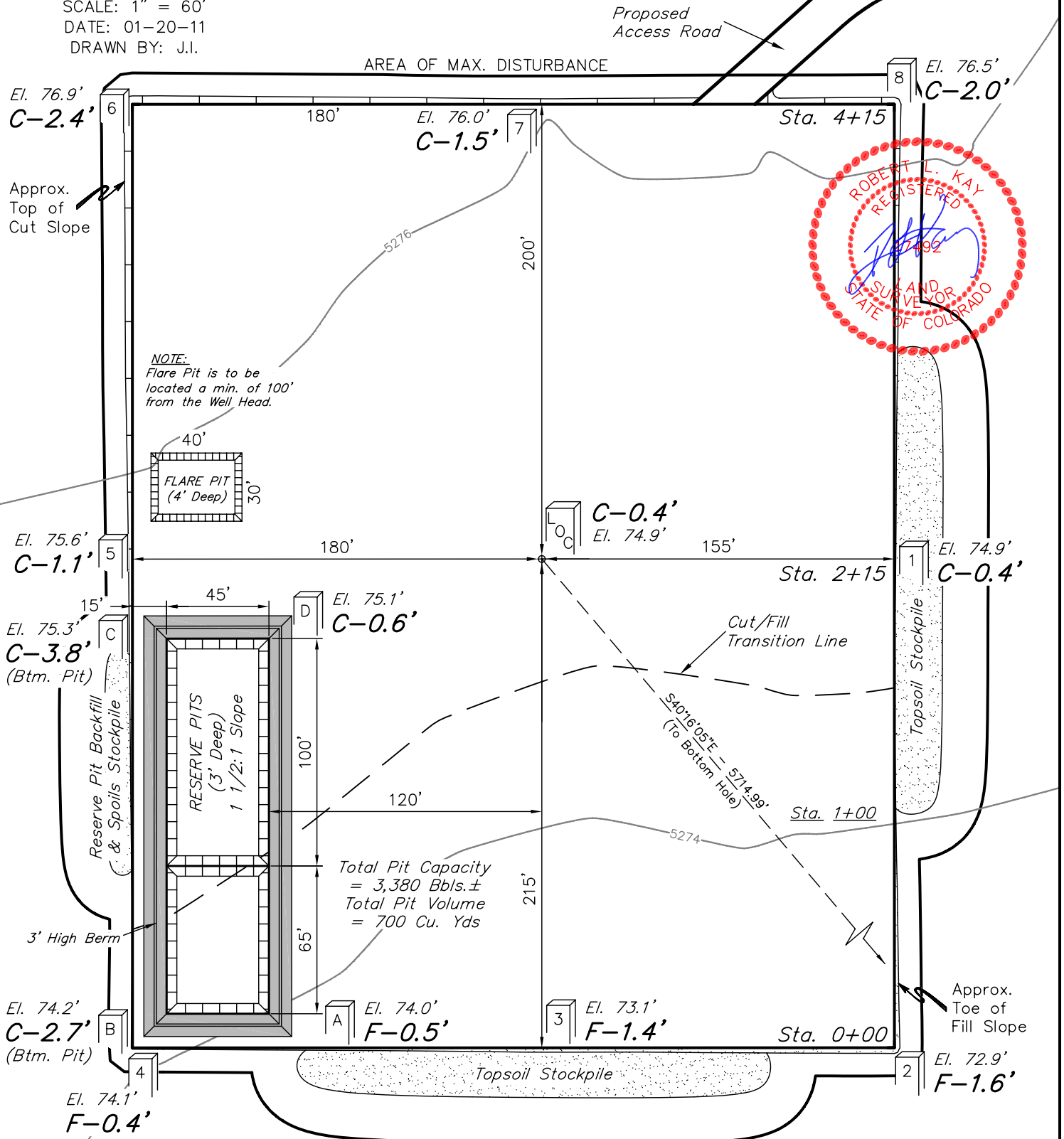
## CONSTRUCTION LAYOUT FOR

CRITTER CREEK #34-16H  
SECTION 16, T11N, R63W, 6th. P.M.  
301' FNL 1700' FEL

FIGURE #1



SCALE: 1" = 60'  
DATE: 01-20-11  
DRAWN BY: J.I.



Elev. Ungraded Ground At Loc. Stake = 5274.9'  
FINISHED GRADE ELEV. AT LOC. STAKE = 5274.5'

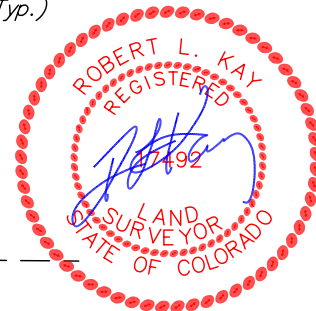
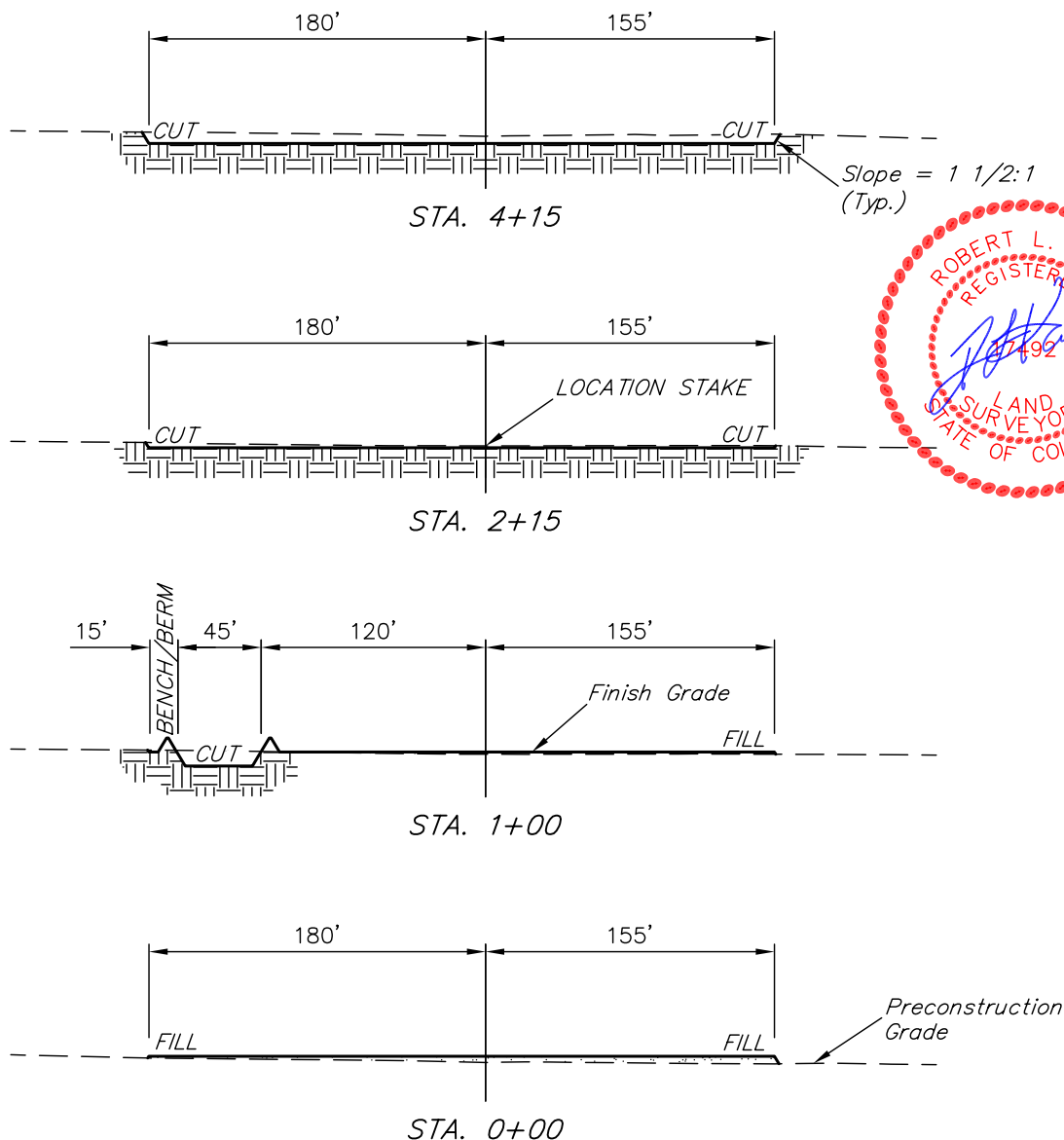
UINTAH ENGINEERING & LAND SURVEYING  
85 So. 200 East \* Vernal, Utah 84078 \* (435) 789-1017

1" = 40'  
X-Section  
Scale  
1" = 100'

DATE: 01-20-11  
DRAWN BY: J.I.

EOG RESOURCES, INC.  
CONSTRUCTION LAYOUT CROSS SECTIONS FOR  
CRITTER CREEK #34-16H  
SECTION 16, T11N, R63W, 6th. P.M.  
301' FNL 1700' FEL

FIGURE #2



NOTE:

Topsoil should not be Stripped Below Finished Grade on Substructure Area.

APPROXIMATE ACREAGES  
WELL SITE DISTURBANCE =  $\pm 3.984$  ACRES  
ACCESS ROAD DISTURBANCE =  $\pm 0.740$  ACRES  
TOTAL =  $\pm 4.724$  ACRES

\* NOTE:  
FILL QUANTITY INCLUDES 5% FOR COMPACTION

APPROXIMATE YARDAGES

(6") Topsoil Stripping = 2,660 Cu. Yds.  
Remaining Location = 2,610 Cu. Yds.  
TOTAL CUT = 5,270 CU.YDS.  
FILL = 2,260 CU.YDS.

EXCESS MATERIAL = 3,010 Cu. Yds.  
Topsoil & Pit Backfill = 3,010 Cu. Yds.  
(1/2 Pit Vol.)  
EXCESS UNBALANCE = 0 Cu. Yds.  
(After Interim Rehabilitation)

UINTAH ENGINEERING & LAND SURVEYING  
85 So. 200 East \* Vernal, Utah 84078 \* (435) 789-1017

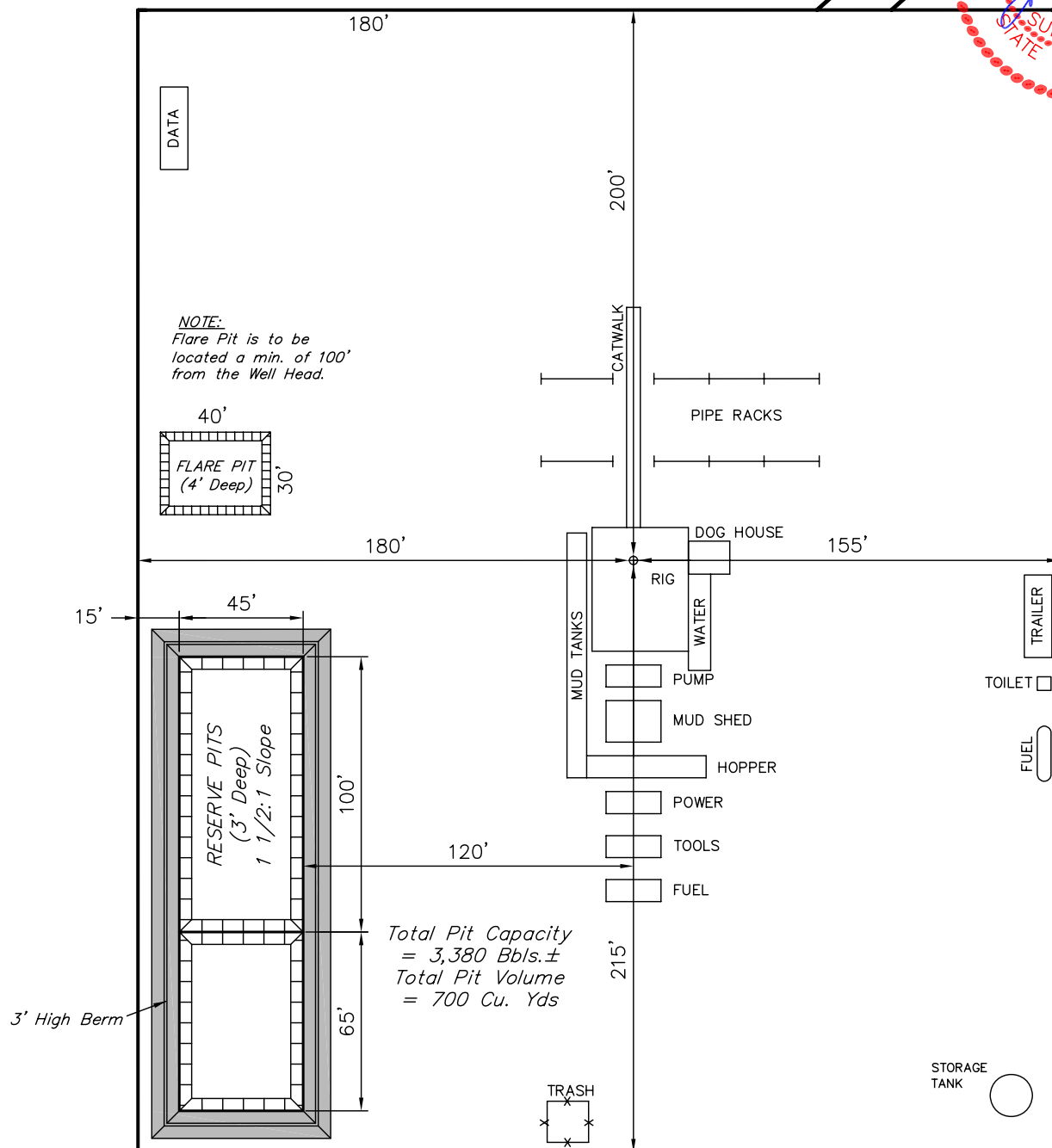
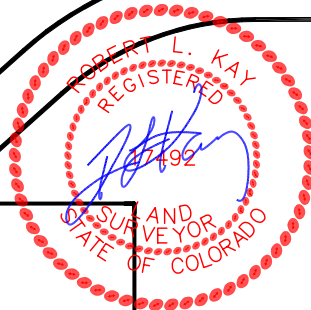
EOG RESOURCES, INC.  
 TYPICAL RIG LAYOUT FOR  
 CRITTER CREEK #34-16H  
 SECTION 16, T11N, R63W, 6th. P.M.  
 301' FNL 1700' FEL

FIGURE #3



SCALE: 1" = 60'  
 DATE: 01-20-11  
 DRAWN BY: J.I.

Proposed  
Access Road



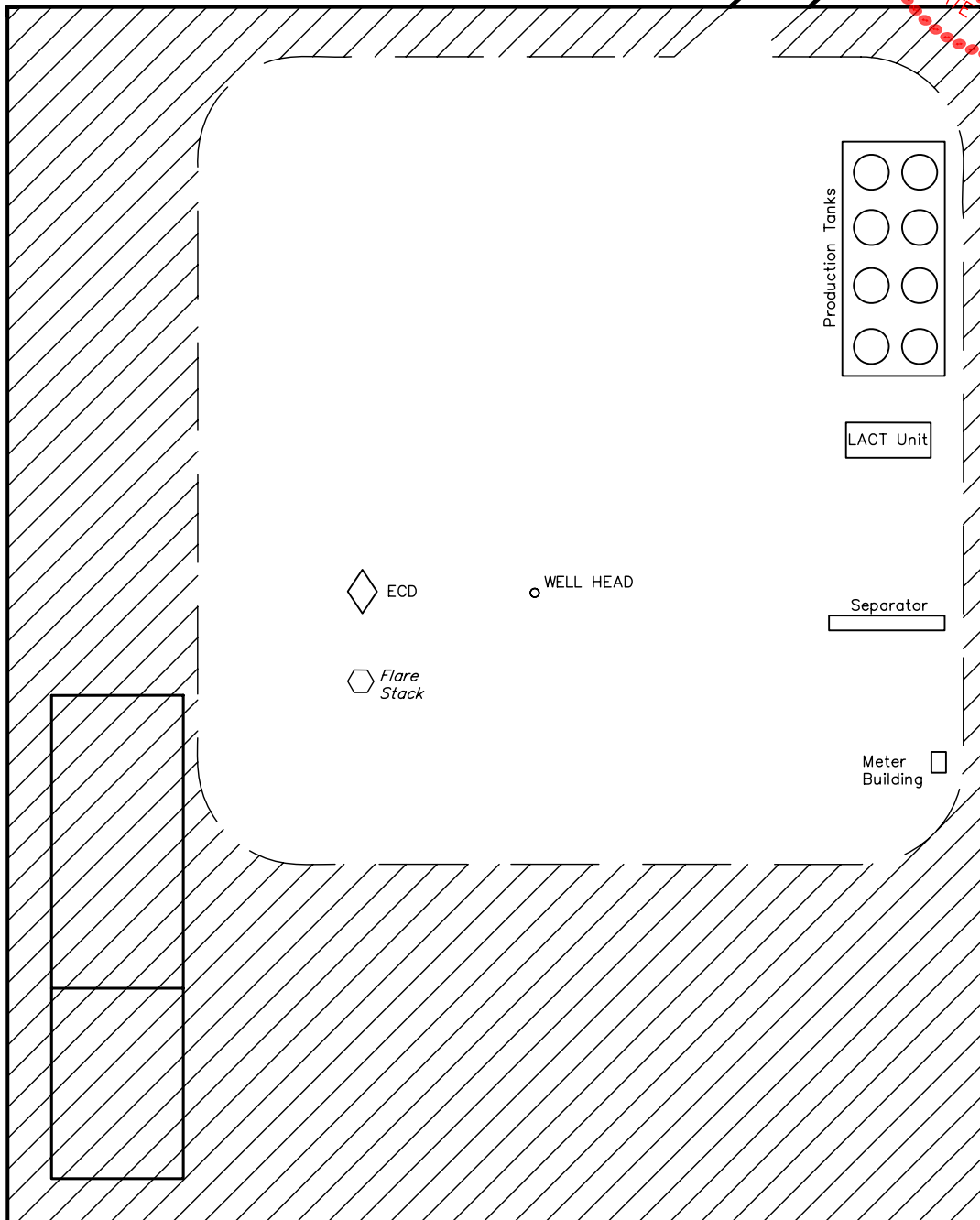
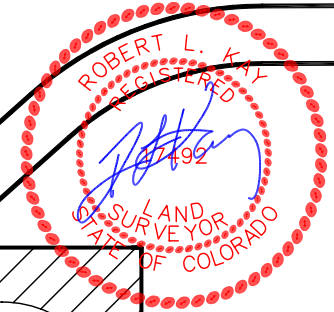
EOG RESOURCES, INC.  
 RECLAMATION DIAGRAM FOR  
 CRITTER CREEK #34-16H  
 SECTION 16, T11N, R63W, 6th. P.M.  
 301' FNL 1700' FEL

FIGURE #4



SCALE: 1" = 60'  
 DATE: 01-20-11  
 DRAWN BY: J.I.

Access Road



APPROXIMATE ACREAGES  
 UN-RECLAIMED = ± 1.641 ACRES

 RECLAIMED AREA

UINTAH ENGINEERING & LAND SURVEYING  
 85 So. 200 East \* Vernal, Utah 84078 \* (435) 789-1017

# EOG RESOURCES, INC.

FIGURE #5

## LOCATION DRAWING FOR CRITTER CREEK #34-16H SECTION 16, T11N, R63W, 6th. P.M. 301' FNL 1700' FEL

NW Cor. Sec. 16  
UELS Alum. Cap,  
Flush W/Ground  
Lat: 40.929564°  
Long: 104.447456°

1921 Brass Cap,  
1.2' High  
Lat: 40.929586°  
Long: 104.437953°

UELS Alum. Cap,  
0.5' Below Road  
Lat: 40.929608°  
Long: 104.428453°

