

T11N, R63W, 6th. P.M.

EOG RESOURCES, INC.

UELS Alum. Cap,
Flush W/Ground
Lat: 40.929564°
Long: 104.447456°

1921 Brass Cap,
1.2' High
Lat: 40.929586°
Long: 104.437953°

UELS Alum. Cap,
0.5' Below Road
Lat: 40.929608°
Long: 104.428453°

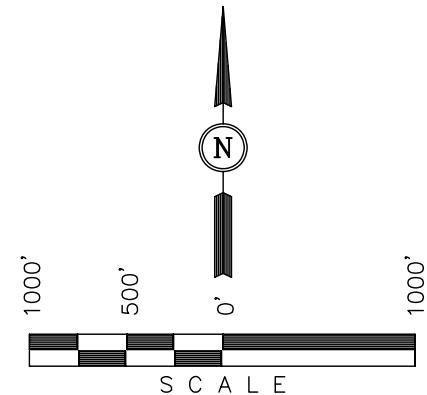
Well location, CRITTER CREEK #34-16H, (SURFACE LOCATION) located as shown in the NW 1/4 NE 1/4 of Section 16, T11N, R63W, 6th. P.M., Weld County, Colorado.

BASIS OF ELEVATION

SPOT ELEVATION LOCATED AT THE NORTHEAST CORNER OF SECTION 1, T11N, R63W, 6th. P.M. TAKEN FROM THE HEREFORD, QUADRANGLE, COLORADO, WELD COUNTY, 7.5 MINUTE QUAD (TOPOGRAPHIC MAP) PUBLISHED BY THE UNITED STATES DEPARTMENT OF THE INTERIOR, GEOLOGICAL SURVEY. SAID ELEVATION IS MARKED AS BEING 5352 FEET.

BASIS OF BEARINGS

BASIS OF BEARINGS IS A G.P.S. OBSERVATION.



CERTIFICATE

THIS IS TO CERTIFY THAT THE ABOVE PLAT WAS PREPARED FROM FIELD NOTES OF ACTUAL SURVEYS MADE BY ME OR UNDER MY SUPERVISION AND THAT THE SAME ARE TRUE AND CORRECT TO THE BEST OF MY KNOWLEDGE AND BELIEF.

REGISTERED LAND SURVEYOR
REGISTRATION NO. 17492
STATE OF COLORADO

UINTAH ENGINEERING & LAND SURVEYING
85 SOUTH 200 EAST - VERNAL, UTAH 84078
(435) 789-1017

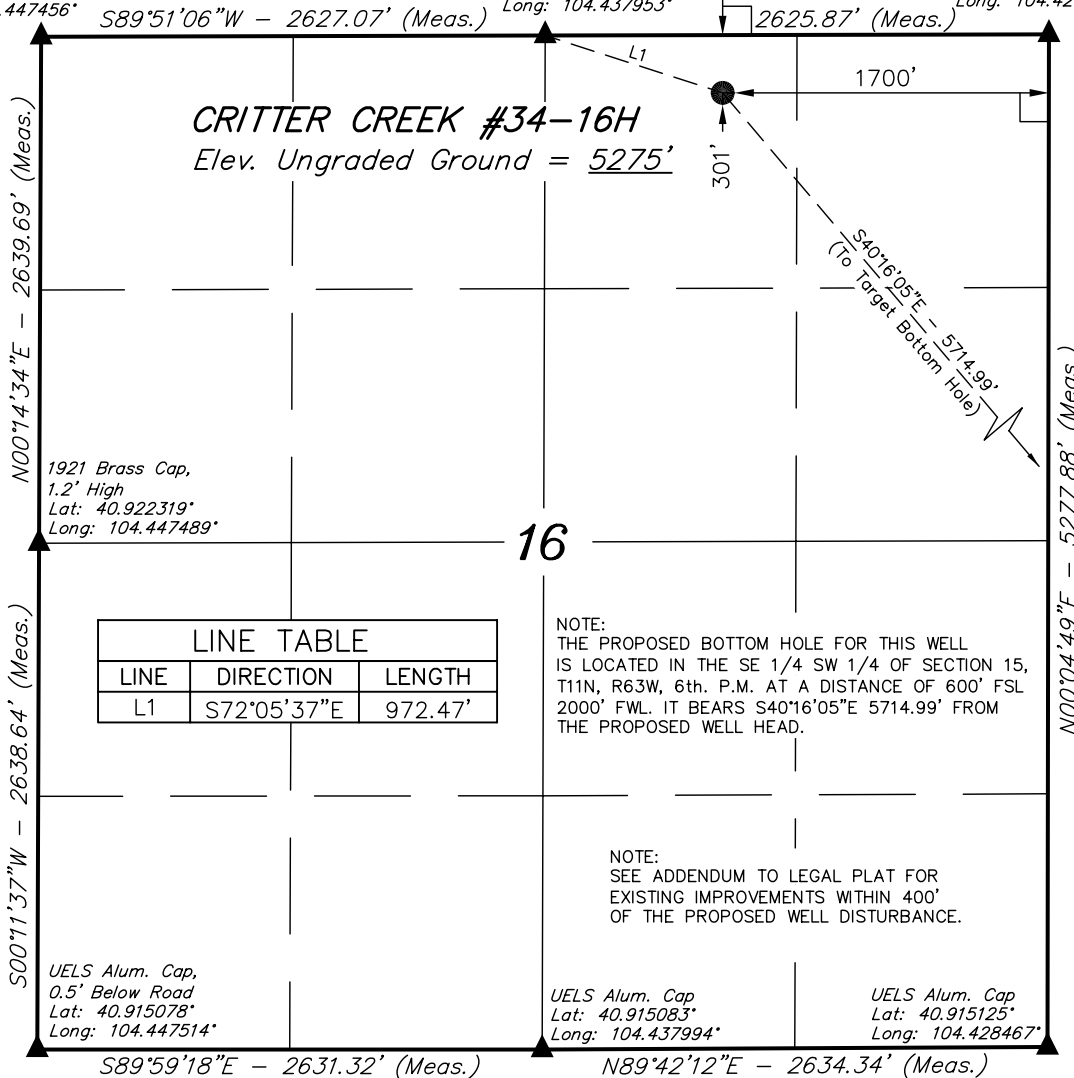
PDOP = 1.2

LEGEND:

- └─┘ = 90° SYMBOL
● = PROPOSED WELL HEAD.
▲ = SECTION CORNERS LOCATED.

NAD 83 (SURFACE LOCATION)	
LATITUDE	= 40°55'43.57" (40.928769)
LONGITUDE	= 104°26'04.57" (104.434603)
NAD 27 (SURFACE LOCATION)	
LATITUDE	= 40°55'43.63" (40.928786)
LONGITUDE	= 104°26'02.73" (104.434092)
STATE PLANE NAD 83 COLORADO NORTH	
N: 1582971.94	E: 3294402.54
STATE PLANE NAD 27 COLORADO NORTH	
N: 582969.87	E: 2294551.98

SCALE 1" = 1000'	DATE SURVEYED: 01-19-11	DATE DRAWN: 01-20-11
PARTY B.B. C.I. J.I.	REFERENCES G.L.O. PLAT	
WEATHER COOL	FILE	EOG RESOURCES, INC.



LINE TABLE		
LINE	DIRECTION	LENGTH
L1	S72°05'37"E	972.47'

NOTE:
THE PROPOSED BOTTOM HOLE FOR THIS WELL IS LOCATED IN THE SE 1/4 SW 1/4 OF SECTION 15, T11N, R63W, 6th. P.M. AT A DISTANCE OF 600' FSL 2000' FWL. IT BEARS S40°16'05"E 5714.99' FROM THE PROPOSED WELL HEAD.

NOTE:
SEE ADDENDUM TO LEGAL PLAT FOR EXISTING IMPROVEMENTS WITHIN 400' OF THE PROPOSED WELL DISTURBANCE.

T11N, R63W, 6th. P.M.

EOG RESOURCES, INC.

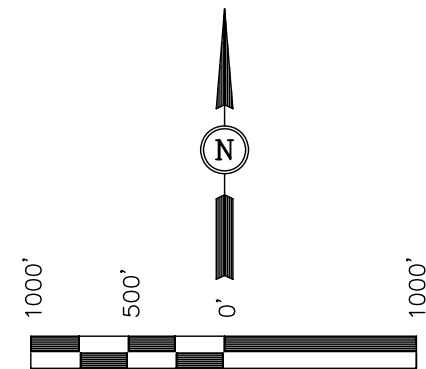
Well location, CRITTER CREEK #34-16H,
(BOTTOM HOLE) located as shown in the
SE 1/4 SW 1/4 of Section 15, T11N,
R63W, 6th. P.M., Weld County, Colorado.

BASIS OF ELEVATION

SPOT ELEVATION LOCATED AT THE NORTHEAST
CORNER OF SECTION 1, T11N, R63W, 6th. P.M.
TAKEN FROM THE HERFORD, QUADRANGLE,
COLORADO, WELD COUNTY, 7.5 MINUTE QUAD
(TOPOGRAPHIC MAP) PUBLISHED BY THE UNITED
STATES DEPARTMENT OF THE INTERIOR,
GEOLOGICAL SURVEY. SAID ELEVATION IS MARKED
AS BEING 5352 FEET.

BASIS OF BEARINGS

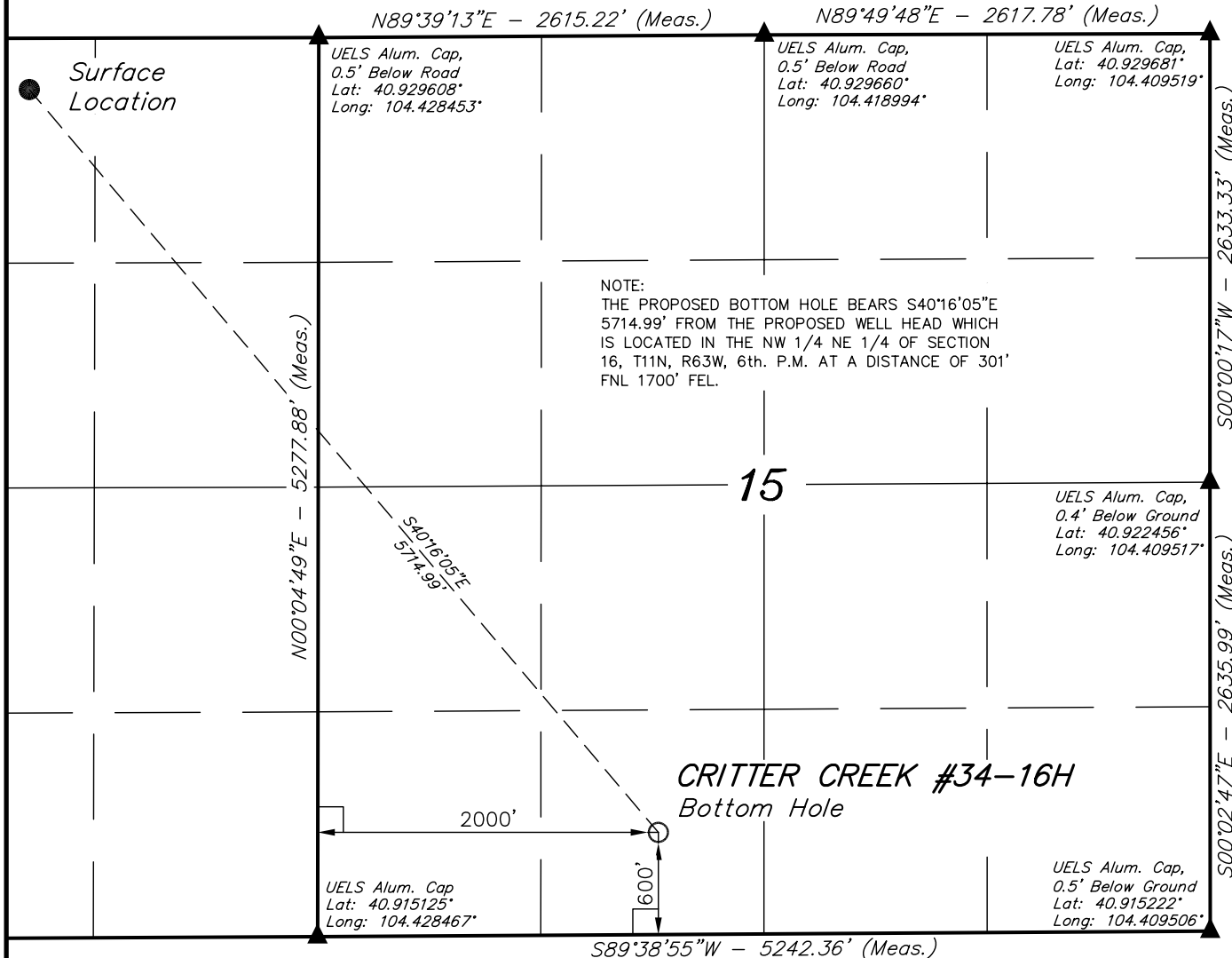
BASIS OF BEARINGS IS A G.P.S. OBSERVATION.



SCALE
CERTIFICATE

THIS IS TO CERTIFY THAT THE ABOVE PLAT WAS PREPARED FROM
FIELD NOTES OF ACTUAL SURVEYS MADE BY ME OR UNDER MY
SUPERVISION AND THAT THE SAME ARE TRUE AND CORRECT TO
THE BEST OF MY KNOWLEDGE AND BELIEF.

REGISTERED LAND SURVEYOR
REGISTRATION NO. 17492
STATE OF COLORADO



LEGEND:

- └─┘ = 90° SYMBOL
- = PROPOSED WELL HEAD.
- ▲ = SECTION CORNERS LOCATED.

NAD 83 (TARGET BOTTOM HOLE)	
LATITUDE	= 40°55'00.53" (40.916814)
LONGITUDE	= 104°25'16.45" (104.421236)
NAD 27 (TARGET BOTTOM HOLE)	
LATITUDE	= 40°55'00.59" (40.916831)
LONGITUDE	= 104°25'14.61" (104.420725)
STATE PLANE NAD 83 COLORADO NORTH	
N: 1578660.86	E: 3298148.98
STATE PLANE NAD 27 COLORADO NORTH	
N: 578658.87	E: 2298298.38

UINTAH ENGINEERING & LAND SURVEYING
85 SOUTH 200 EAST - VERNAL, UTAH 84078
(435) 789-1017

SCALE 1" = 1000'	DATE SURVEYED: 01-19-11	DATE DRAWN: 01-20-11
PARTY B.B. C.I. J.I.	REFERENCES G.L.O. PLAT	
WEATHER COOL	FILE	EOG RESOURCES, INC.