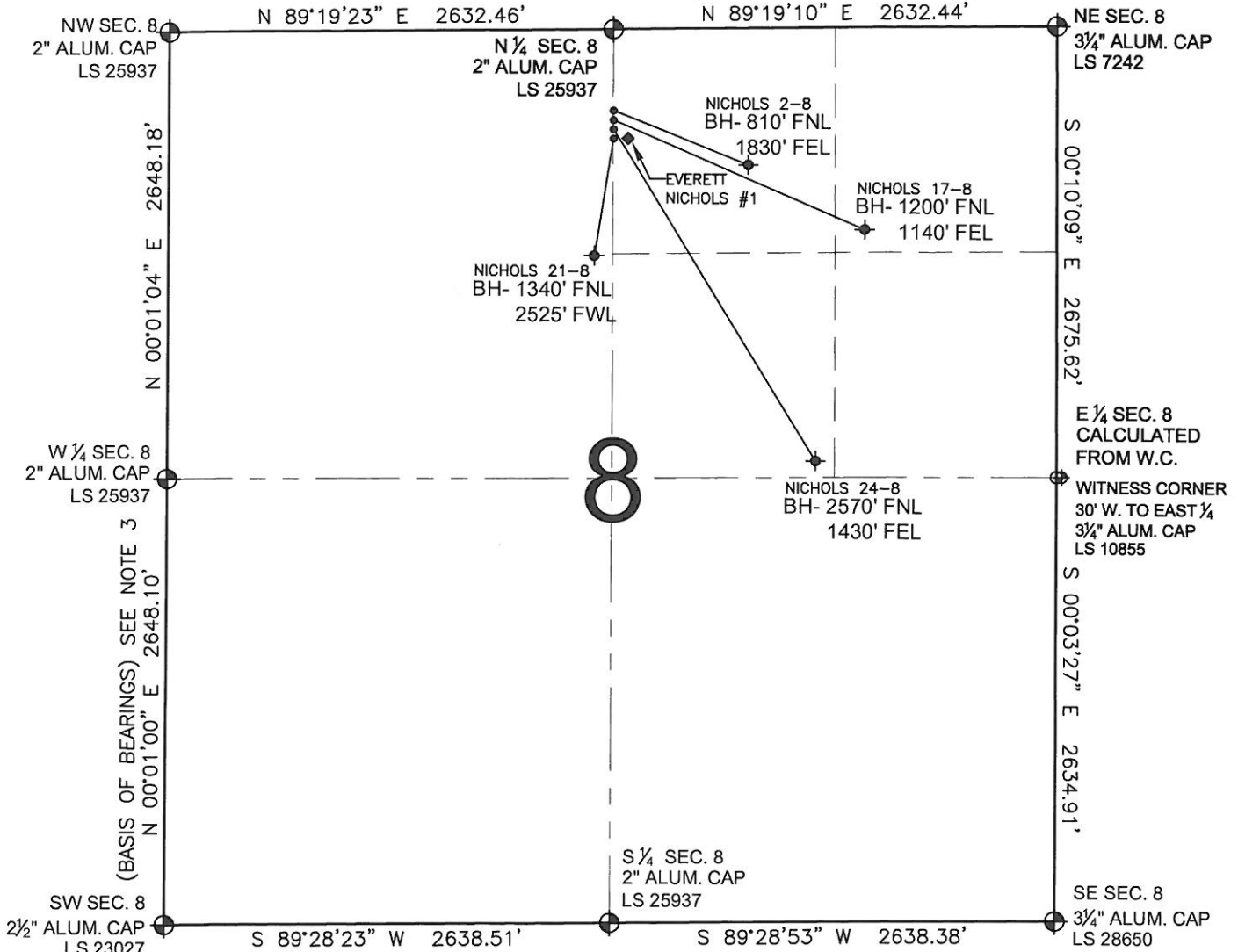


PAD DRAWING - NICHOLS 4 PAD

SECTION 8, TOWNSHIP 2 NORTH, RANGE 65 WEST, 6TH P.M.



LEGEND

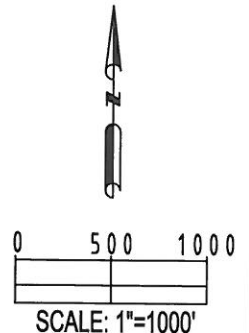
- ⊕ = EXISTING MONUMENT
- ⬮ = BOTTOM HOLE
- BH= BOTTOM HOLE
- = PROPOSED WELL
- ◆ = EXISTING WELL

NOTES:

- THIS SURVEY WAS DONE BY GPS METHODS AND CONFORMS TO THE MINIMUM STANDARDS SET BY THE C.O.G.C.C., RULE NO. 215
- ELEVATIONS SHOWN AT THE WELL HEAD, AS WELL AS HORIZONTAL CONTROL, ARE BASED ON GPS-RTK VALUES DERIVED FROM DOING 2-HOUR STATIC GPS SESSIONS AND REDUCTIONS USING O.P.U.S. SOLUTIONS.
VERTICAL = NAVD88; HORIZONTAL = NAD83/92
- THE BEARINGS SHOWN HEREON ARE BASED ON GPS OBSERVATIONS BETWEEN THE MONUMENTS SHOWN HEREON AS FOUND ON THE FIELD DATE BELOW.
- DISTANCES SHOWN ARE AT GROUND LEVEL, AS MEASURED IN THE FIELD, WITH TIES TO WELLS MEASURED AT A PERPENDICULAR TO SECTION LINES.

NOTES:

- NICHOLS 2-8 TO BE AT 481' FNL, 2630' FEL. BOTTOM HOLE AT 810' FNL & 1830' FEL.
- NICHOLS 17-8 TO BE AT 497' FNL, 2630' FEL. BOTTOM HOLE AT 1200' FNL & 1140' FEL.
- NICHOLS 24-8 TO BE AT 513' FNL, 2630' FEL. BOTTOM HOLE AT 2570' FNL & 1430' FEL.
- NICHOLS 21-8 TO BE AT 529' FNL, 2630' FEL. BOTTOM HOLE AT 1340' FNL & 2525' FWL.
- EVERETT NICHOLS #1 IS 529' FNL, 2580' FEL.



REVISIONS

INITIAL	DATE

PREPARED BY:

PFS

Petroleum Field Services, LLC
1801 W. 13th Ave.
Denver, CO 80204



KERR-MCGEE OIL & GAS ONSHORE LP

FIELD DATE:

08-26-10

DRAWING DATE:

09-10-10

BY:

SMF

PAD NAME:

NICHOLS 4 PAD

SURFACE LOCATION:

WELD COUNTY, COLORADO
NW 1/4 NE 1/4, SEC. 8, T2N, R65W