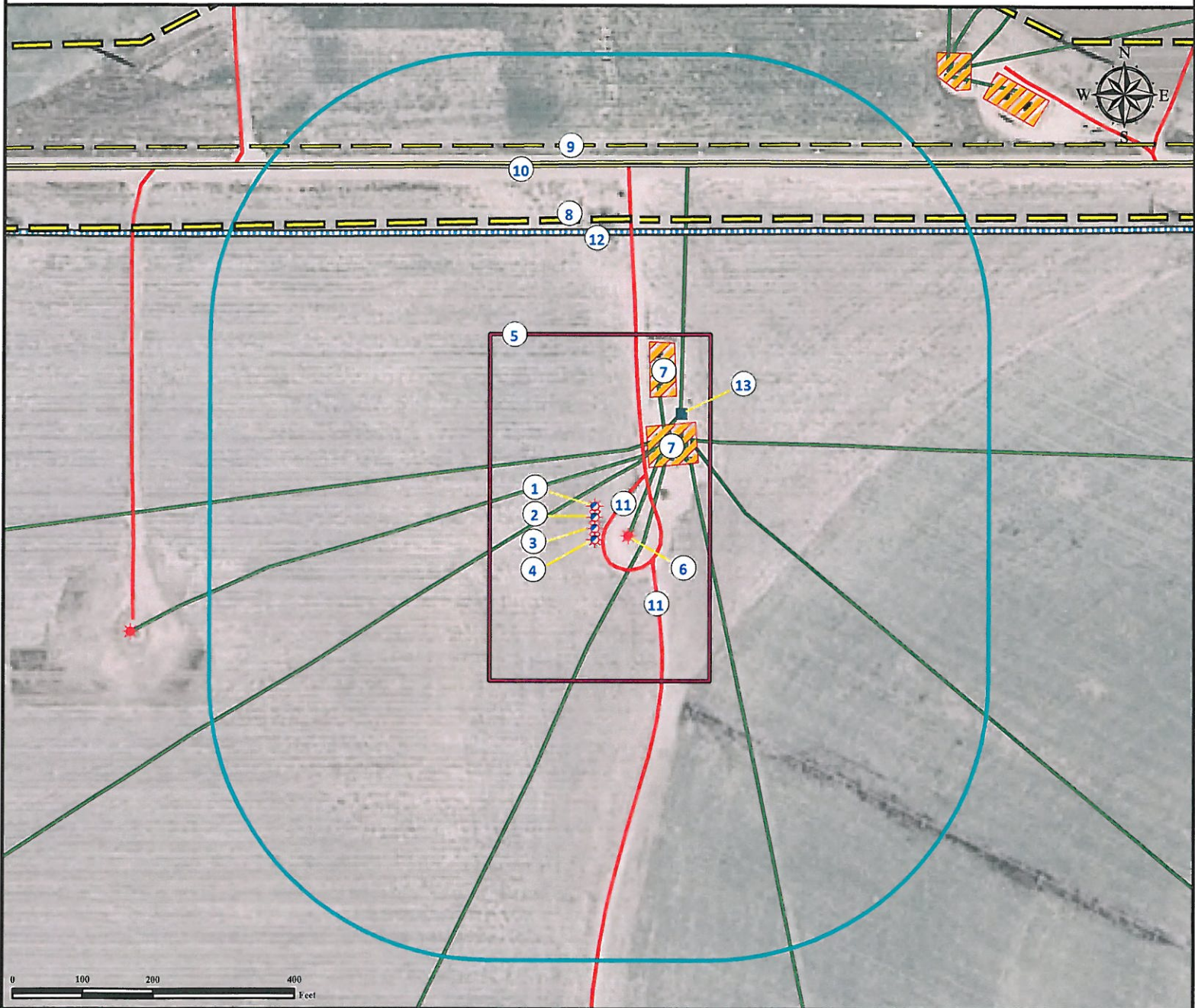


Location Drawing

NICHOLS 21-8

Multi Well Pad

NW¼ NE¼ SECTION 8, TOWNSHIP 2 NORTH, RANGE 65 WEST OF THE 6TH PRINCIPAL MERIDIAN



1. Proposed Well NICHOLS 2-8.
2. Proposed Well NICHOLS 17-8.
3. Proposed Well NICHOLS 24-8.
4. Proposed Well NICHOLS 21-8.
5. Operational Disturbance Area.
6. Existing Well EVERETT NICHOLS #1 is 50' E.
7. Facilities are ±132' NE and ±221' NE.
8. Overhead Transmission Line is ±459' N.
9. Minor Overhead Power Line is ±563' N.
10. County Road 24 is ±537' N.
11. Private Roads are ±12' E and ±96' SE.
12. Perennial Stream is ±437' N. Does Not Exist in Field Per Field Verify.
13. Gathering Equipment is ±215' NE.

Legend

- Proposed Well
- Existing Well
- Oil & Gas Equipment

- Facilities Enclosure
- Disturbance Area
- 400' Radius
- Perennial Stream

- Power Line
- Public Road
- Private Road
- Underground Pipeline

Reference Location

** All Measurements are Made from
Reference Well NICHOLS 21-8 **
Lat: 40.159065° Long:-104.687677° (NAD83)
Elevation: 4823 Feet

Surface Use: Cropland



Use our resources to find yours!
www.petro-fs.com
(303) 928-7128

Field Date: 08/26/2010
Drafting Date: 08/31/2010
Drafter: KLM
Checked By: BHF

Data Sources:
- Aerial courtesy of NAIP (2009)

Prepared for: **Anadarko**
Petroleum Corporation
KERR-MCGEE OIL & GAS ONSHORE LP