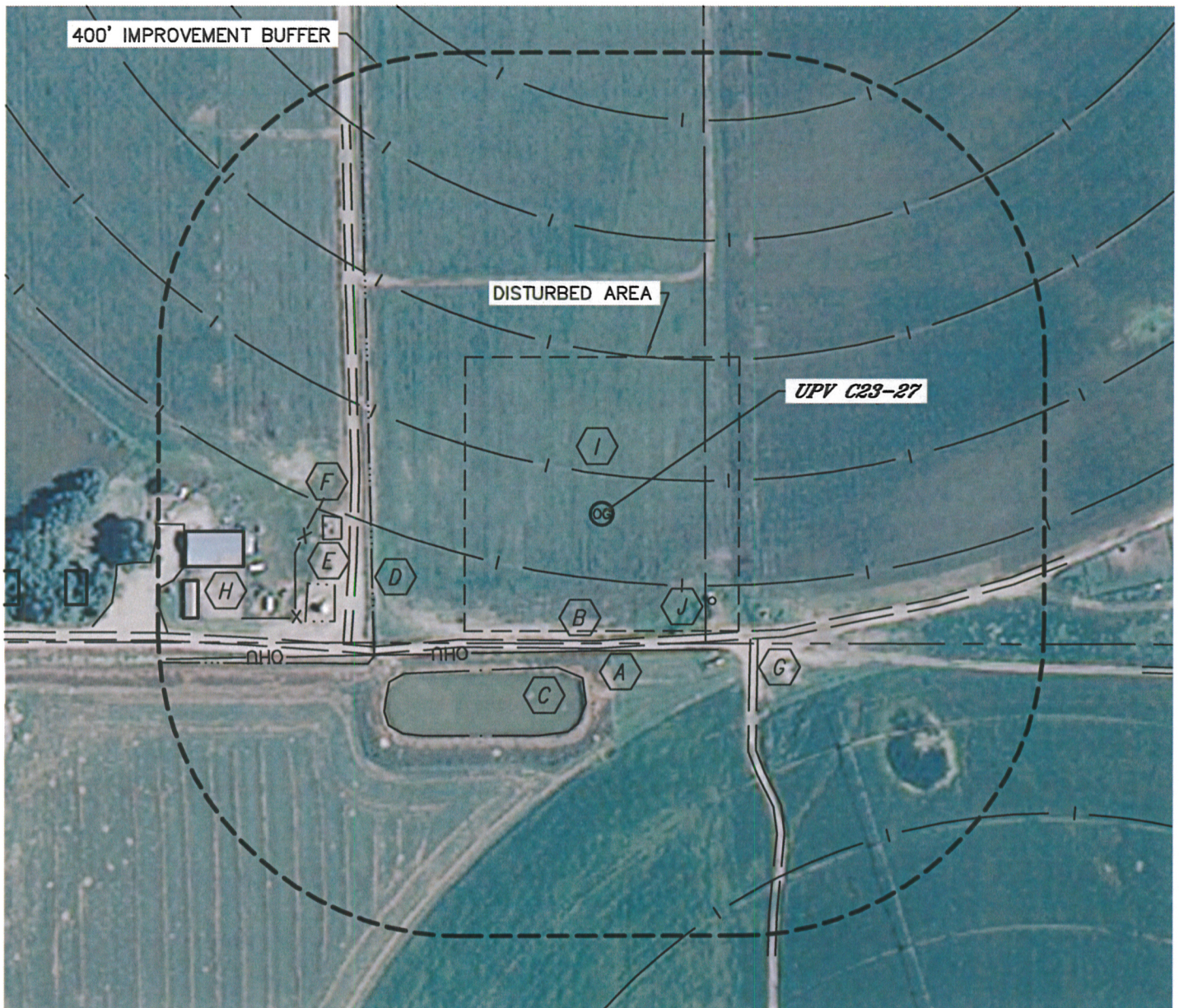


Lat40°, LLC 1635 Foxtrail Drive, Suite 325 Loveland, CO 80538

LOCATION DRAWING

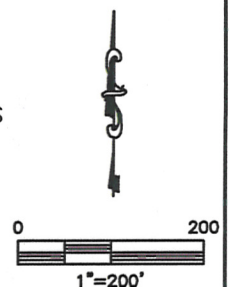
UPV C23-27

SECTION: 14
TOWNSHIP: 4N
RANGE: 64W



IMPROVEMENTS:

- | | |
|---|--|
| A OVERHEAD UTILITY 180' S | F FENCE 340' W |
| B COUNTY ROAD 44 167' S | G FIELD ROAD 320' W, 270' SE |
| C IRRIGATION POND 210' S | H BUILDING 470' W, 535' W |
| D IRRIGATION DITCH 300' W | I IRRIGATION PIVOT TRACK 86' S
82' N, 210' N, 367' N, 525' N |
| E PRODUCTION FACILITY (NOBLE) 340' W | J IRRIGATION PUMP 185' SE |



NEAREST: BUILDING 470' W, PUBLIC ROAD 167' S,
ABOVE GROUND UTILITY 180' S, RAILROAD 5280'+, PROPERTY LINE 170' S