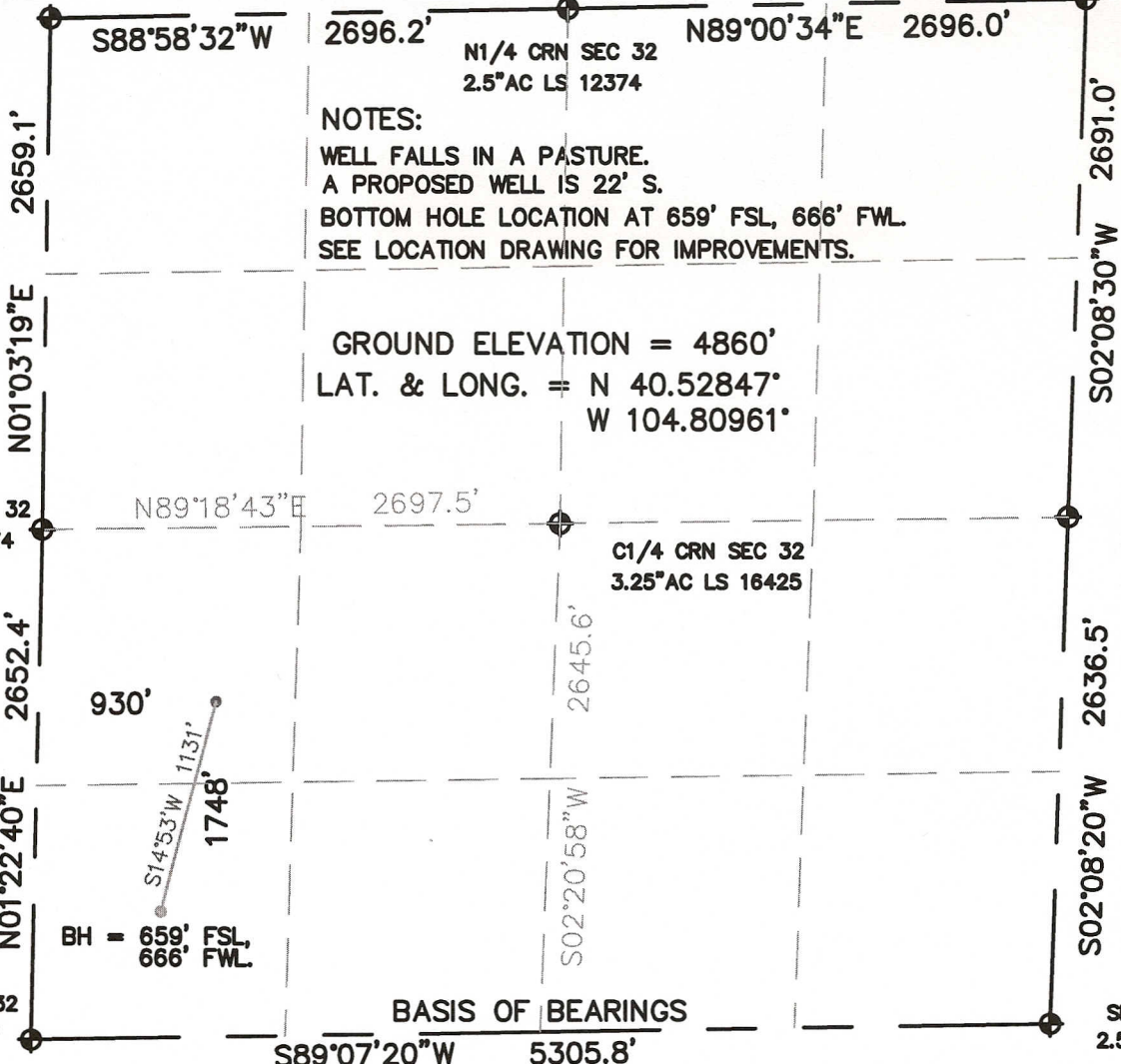


WELL LOCATION CERTIFICATE

NW CRN SEC. 32
2.5"AC LS 12374

SECTION 32, TOWNSHIP 7 NORTH, RANGE 66 WEST, 6TH P.M.

NE CRN SEC. 32
3.25"AC LS 28285



NOTES:

WELL FALLS IN A PASTURE.
A PROPOSED WELL IS 22' S.
BOTTOM HOLE LOCATION AT 659' FSL, 666' FWL.
SEE LOCATION DRAWING FOR IMPROVEMENTS.

GROUND ELEVATION = 4860'
LAT. & LONG. = N 40.52847°
W 104.80961°

BASIS OF BEARINGS

I HEREBY STATE TO PETROLEUM DEVELOPMENT CORP. THAT THIS WELL LOCATION CERTIFICATE FOR THE WELL NELSON 14-32D IS LOCATED 1748' FSL & 930' FWL, SEC. 32, T7N, R66W, 6PM.

LEGEND

- ⊕ = FOUND MONUMENT
- = PROPOSED WELL
- ◉ = BOTTOM HOLE



SCALE 1" = 1000'

ELEVATION SOURCE = USGS 7.5' QUAD.MAP CONTOURS
NGVD 1929 DATUM.

LAT. & LONG. ARE DIFFERENTIALLY CORRECTED (NAD'83)
USING (DGPS) WITH (PDOP) VALUES LESS THAN SIX (6).

SHOWN DISTANCES ARE FIELD MEASURED - EXTERIOR SECTION LINES
ARE DRAWN TO SCALE (BEST APPROX. OR FOUND MONUMENT ⊕).

DISTANCES TO WELL SHOWN PERPENDICULAR
TO SECTION LINES.

THOMAS G. CARLSON, PLS 24657
HORSESHOE SURVEYING, LLC

THIS IS NOT A MONUMENTED BOUNDARY SURVEY, IT IS ONLY A
DRAWING INTENDED TO DEPICT THE WELL LOCATION TO SECTION LINES.

PREPARED BY: HORSESHOE SURVEYING, LLC
PO BOX 150458
LAKEWOOD, CO 80215
(720)872-0196

DRAWING DATE:
12-13-10

FIELD DATE:
12-10-10

BY: TGC

CHKD:

WELL NAME:

NELSON 14-32D

LOCATION:

WELD COUNTY, CO
SW1/4, SEC. 32, T7N, R66W, 6TH P.M.

JOB NO.

SHEET NO.

1 OF 1