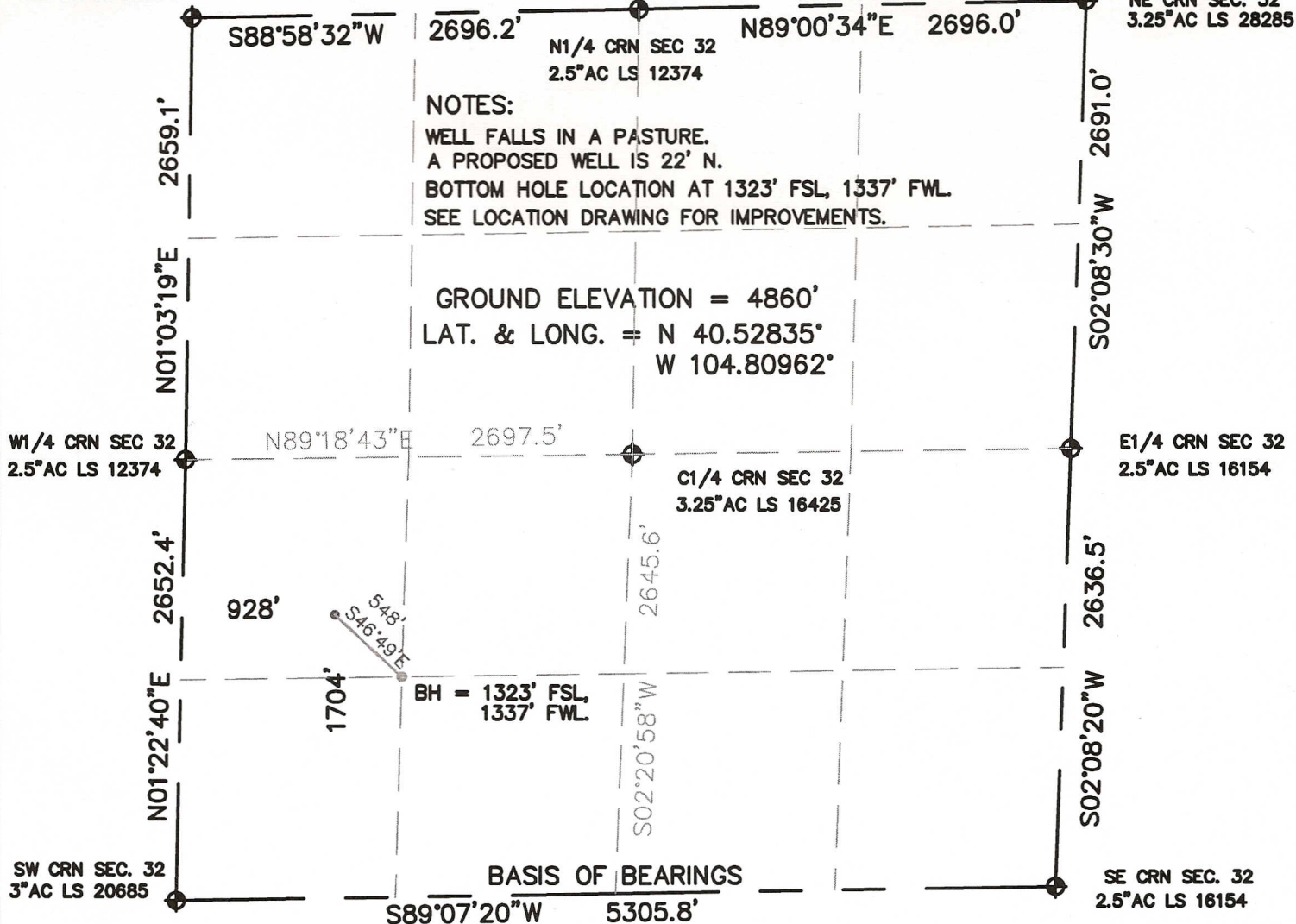


# WELL LOCATION CERTIFICATE

NW CRN SEC. 32  
2.5"AC LS 12374

SECTION 32, TOWNSHIP 7 NORTH, RANGE 66 WEST, 6TH P.M.

NE CRN SEC. 32  
3.25"AC LS 28285



I HEREBY STATE TO PETROLEUM DEVELOPMENT CORP. THAT THIS WELL LOCATION CERTIFICATE FOR THE WELL NELSON 32BD IS LOCATED 1704' FSL & 928' FWL, SEC. 32, T7N, R66W, 6PM.

## LEGEND

- ⊕ = FOUND MONUMENT
- = PROPOSED WELL
- ◊ = BOTTOM HOLE



SCALE 1" = 1000'

ELEVATION SOURCE = USGS 7.5' QUAD.MAP CONTOURS  
NGVD 1929 DATUM.

LAT. & LONG. ARE DIFFERENTIALLY CORRECTED (NAD'83)  
USING (DGPS) WITH (PDOP) VALUES LESS THAN SIX (6).

SHOWN DISTANCES ARE FIELD MEASURED - EXTERIOR SECTION LINES  
ARE DRAWN TO SCALE (BEST APPROX. OR FOUND MONUMENT ⊕ ).

DISTANCES TO WELL SHOWN PERPENDICULAR  
TO SECTION LINES.

THOMAS G. CARLSON, PLS 24657  
HORSESHOE SURVEYING, LLC

THIS IS NOT A MONUMENTED BOUNDARY SURVEY, IT IS ONLY A  
DRAWING INTENDED TO DEPICT THE WELL LOCATION TO SECTION LINES.

PREPARED BY:		HORSESHOE SURVEYING, LLC PO BOX 150458 LAKEWOOD, CO 80215 (720)872-0196		WELL NAME: NELSON 32BD	
DRAWING DATE: 12-13-10		BY: TGC		LOCATION: WELD COUNTY, CO SW1/4, SEC. 32, T7N, R66W, 6TH P.M.	
FIELD DATE: 12-10-10				JOB NO. SHEET NO. 1 OF 1	