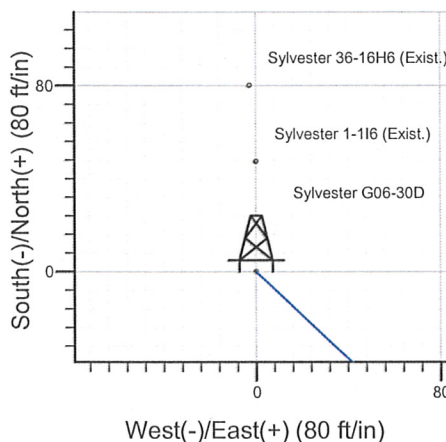
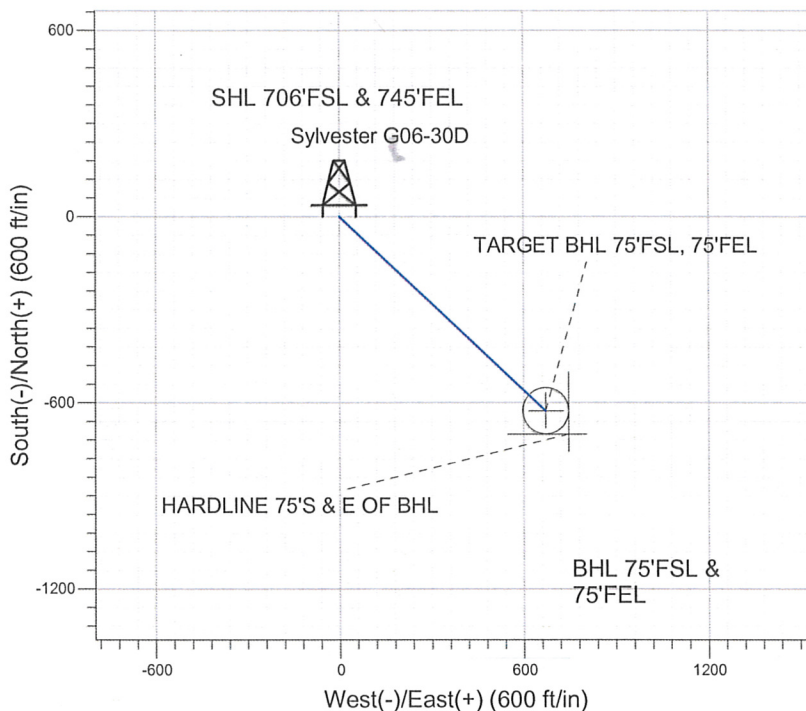
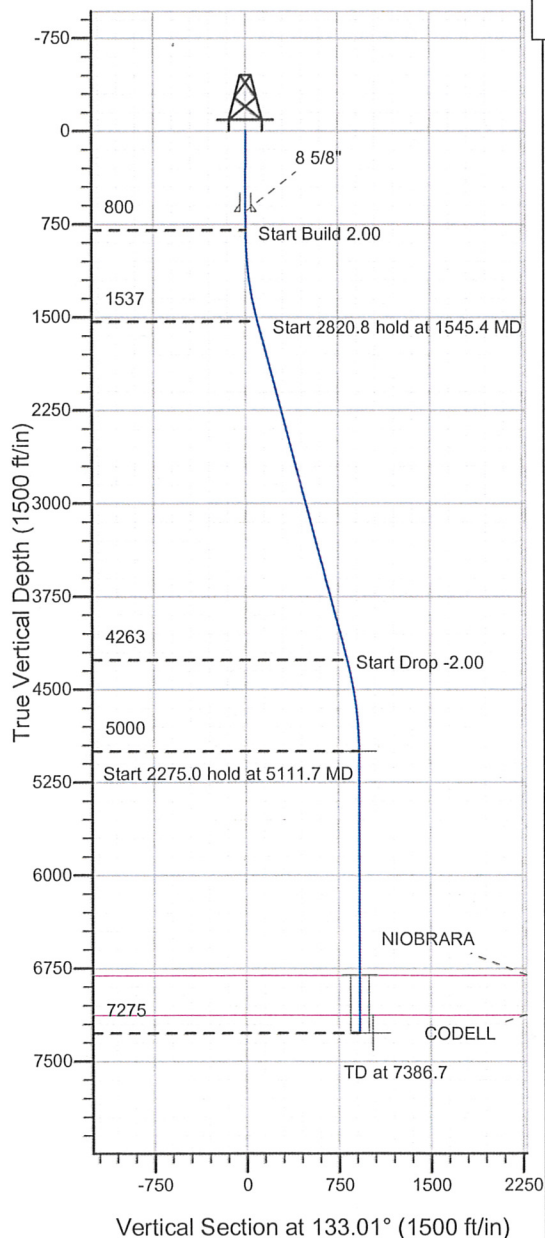


Well Name: **Sylvester G06-30D**

Surface Location: Sylvester G06-30D Sec.36-T5N-R66W
 North American Datum 1983 , US State Plane 1983 Colorado Northern Zone
 Ground Elevation: 4662.0
 +N/-S +E/-W Northing Easting Latitude Longitude Slot
 0.0 0.0 1371447.87 3217851.32 40° 21' 1.404 N 104° 43' 6.096 W
 Original Well ElevWELL @ 4675.0ft (Original Well Elev)

NOBLE ENERGY INC WELD COUNTY CO



Sylvester G06-30D
 Noble Sylvester G06-30D Plan #2 (7-26-10)
 12:56, July 26 2010



Azimuths to True North
 Magnetic North: 8.95°
 Magnetic Field
 Strength: 53205.5snT
 Dip Angle: 67.05°
 Date: 7/26/2010
 Model: IGRF2010

WELLBORE TARGET DETAILS (LAT/LONG)

Name	TVD	+N/-S	+E/-W	Latitude	Longitude	Shape
TARGET BHL 75'FSL, 75'FEL	5000.0	-626.6	671.7	40° 20' 55.212 N	104° 42' 57.420 W	Point
TARGET CIRCLE 75'FSL, 75'FEL	6805.0	-626.6	671.7	40° 20' 55.212 N	104° 42' 57.421 W	Circle (Radius: 75.0)
HARDLINE 75'S & E OF BHL	7275.0	-701.6	746.7	40° 20' 54.471 N	104° 42' 56.452 W	Polygon

SECTION DETAILS

Sec	MD	Inc	Azi	TVD	+N/-S	+E/-W	DLeg	TFace	VSec	Target
1	0.0	0.00	0.00	0.0	0.0	0.0	0.00	0.00	0.0	
2	800.0	0.00	0.00	800.0	0.0	0.0	0.00	0.00	0.0	
3	1545.4	14.91	133.01	1537.1	-65.8	70.5	2.00	133.01	96.4	
4	4266.3	14.91	133.01	4262.9	-560.8	601.2	0.00	0.00	822.2	
5	5111.7	0.00	0.00	5000.0	-626.6	671.7	2.00	180.00	918.6	TARGET BHL 75'FSL, 75'FEL
6	67386.7	0.00	0.00	7275.0	-626.6	671.7	0.00	0.00	918.6	



Directional

NOBLE ENERGY INC WELD COUNTY CO

SEC.36-T5N-R66W

Sylvester G06-30D Sec.36-T5N-R66W

Sylvester G06-30D

Wellbore #1

Plan: Noble Sylvester G06-30D Plan #2 (7-26-10)

Standard Planning Report

26 July, 2010

Database:	Landmark	Local Co-ordinate Reference:	Well Sylvester G06-30D
Company:	NOBLE ENERGY INC WELD COUNTY CO	TVD Reference:	WELL @ 4675.0ft (Original Well Elev)
Project:	SEC.36-T5N-R66W	MD Reference:	WELL @ 4675.0ft (Original Well Elev)
Site:	Sylvester G06-30D Sec.36-T5N-R66W	North Reference:	True
Well:	Sylvester G06-30D	Survey Calculation Method:	Minimum Curvature
Wellbore:	Wellbore #1		
Design:	Noble Sylvester G06-30D Plan #2 (7-26-10)		

Project	SEC.36-T5N-R66W, Weld County, Colorado		
Map System:	US State Plane 1983	System Datum:	Mean Sea Level
Geo Datum:	North American Datum 1983		Using Well Reference Point
Map Zone:	Colorado Northern Zone		Using geodetic scale factor

Site	Sylvester G06-30D Sec.36-T5N-R66W		
Site Position:		Northing:	1,371,447.87 ft
From:	Lat/Long	Easting:	3,217,851.32 ft
Position Uncertainty:	0.0 ft	Slot Radius:	"
		Latitude:	40° 21' 1.404 N
		Longitude:	104° 43' 6.096 W
		Grid Convergence:	0.51 °

Well	Sylvester G06-30D		
Well Position	+N/-S	0.0 ft	Northing:
	+E/-W	0.0 ft	Easting:
Position Uncertainty	0.0 ft	Wellhead Elevation:	ft
		Latitude:	40° 21' 1.404 N
		Longitude:	104° 43' 6.096 W
		Ground Level:	4,662.0 ft

Wellbore	Wellbore #1		
Magnetics	Model Name	Sample Date	Declination (°)
	IGRF2010	7/26/2010	8.96
			Dip Angle (°)
			67.05
			Field Strength (nT)
			53,206

Design	Noble Sylvester G06-30D Plan #2 (7-26-10)		
Audit Notes:			
Version:	Phase:	PROTOTYPE	Tie On Depth:
			0.0
Vertical Section:	Depth From (TVD)	+N/-S	+E/-W
	(ft)	(ft)	(ft)
	0.0	0.0	0.0
			Direction (°)
			133.01

Plan Sections										
Measured Depth (ft)	Inclination (°)	Azimuth (°)	Vertical Depth (ft)	+N/-S (ft)	+E/-W (ft)	Dogleg Rate (°/100ft)	Build Rate (°/100ft)	Turn Rate (°/100ft)	TFO (°)	Target
0.0	0.00	0.00	0.0	0.0	0.0	0.00	0.00	0.00	0.00	
800.0	0.00	0.00	800.0	0.0	0.0	0.00	0.00	0.00	0.00	
1,545.4	14.91	133.01	1,537.1	-65.8	70.5	2.00	2.00	0.00	133.01	
4,366.3	14.91	133.01	4,262.9	-560.8	601.2	0.00	0.00	0.00	0.00	
5,111.7	0.00	0.00	5,000.0	-626.6	671.7	2.00	-2.00	0.00	180.00	TARGET BHL 75°F
7,386.7	0.00	0.00	7,275.0	-626.6	671.7	0.00	0.00	0.00	0.00	

Database: Landmark
Company: NOBLE ENERGY INC WELD COUNTY CO
Project: SEC.36-T5N-R66W
Site: Sylvester G06-30D Sec.36-T5N-R66W
Well: Sylvester G06-30D
Wellbore: Wellbore #1
Design: Noble Sylvester G06-30D Plan #2 (7-26-10)

Local Co-ordinate Reference: Well Sylvester G06-30D
TVD Reference: WELL @ 4675.0ft (Original Well Elev)
MD Reference: WELL @ 4675.0ft (Original Well Elev)
North Reference: True
Survey Calculation Method: Minimum Curvature

Planned Survey

Measured Depth (ft)	Inclination (°)	Azimuth (°)	Vertical Depth (ft)	+N/-S (ft)	+E/-W (ft)	Vertical Section (ft)	Dogleg Rate (°/100ft)	Build Rate (°/100ft)	Turn Rate (°/100ft)
0.0	0.00	0.00	0.0	0.0	0.0	0.0	0.00	0.00	0.00
40.0	0.00	0.00	40.0	0.0	0.0	0.0	0.00	0.00	0.00
80.0	0.00	0.00	80.0	0.0	0.0	0.0	0.00	0.00	0.00
120.0	0.00	0.00	120.0	0.0	0.0	0.0	0.00	0.00	0.00
160.0	0.00	0.00	160.0	0.0	0.0	0.0	0.00	0.00	0.00
200.0	0.00	0.00	200.0	0.0	0.0	0.0	0.00	0.00	0.00
240.0	0.00	0.00	240.0	0.0	0.0	0.0	0.00	0.00	0.00
280.0	0.00	0.00	280.0	0.0	0.0	0.0	0.00	0.00	0.00
320.0	0.00	0.00	320.0	0.0	0.0	0.0	0.00	0.00	0.00
360.0	0.00	0.00	360.0	0.0	0.0	0.0	0.00	0.00	0.00
400.0	0.00	0.00	400.0	0.0	0.0	0.0	0.00	0.00	0.00
440.0	0.00	0.00	440.0	0.0	0.0	0.0	0.00	0.00	0.00
480.0	0.00	0.00	480.0	0.0	0.0	0.0	0.00	0.00	0.00
520.0	0.00	0.00	520.0	0.0	0.0	0.0	0.00	0.00	0.00
560.0	0.00	0.00	560.0	0.0	0.0	0.0	0.00	0.00	0.00
600.0	0.00	0.00	600.0	0.0	0.0	0.0	0.00	0.00	0.00
640.0	0.00	0.00	640.0	0.0	0.0	0.0	0.00	0.00	0.00
650.0	0.00	0.00	650.0	0.0	0.0	0.0	0.00	0.00	0.00
8 5/8"									
680.0	0.00	0.00	680.0	0.0	0.0	0.0	0.00	0.00	0.00
720.0	0.00	0.00	720.0	0.0	0.0	0.0	0.00	0.00	0.00
760.0	0.00	0.00	760.0	0.0	0.0	0.0	0.00	0.00	0.00
800.0	0.00	0.00	800.0	0.0	0.0	0.0	0.00	0.00	0.00
840.0	0.80	133.01	840.0	-0.2	0.2	0.3	2.00	2.00	0.00
880.0	1.60	133.01	880.0	-0.8	0.8	1.1	2.00	2.00	0.00
920.0	2.40	133.01	920.0	-1.7	1.8	2.5	2.00	2.00	0.00
960.0	3.20	133.01	959.9	-3.0	3.3	4.5	2.00	2.00	0.00
1,000.0	4.00	133.01	999.8	-4.8	5.1	7.0	2.00	2.00	0.00
1,040.0	4.80	133.01	1,039.7	-6.9	7.3	10.0	2.00	2.00	0.00
1,080.0	5.60	133.01	1,079.6	-9.3	10.0	13.7	2.00	2.00	0.00
1,120.0	6.40	133.01	1,119.3	-12.2	13.1	17.9	2.00	2.00	0.00
1,160.0	7.20	133.01	1,159.1	-15.4	16.5	22.6	2.00	2.00	0.00
1,200.0	8.00	133.01	1,198.7	-19.0	20.4	27.9	2.00	2.00	0.00
1,240.0	8.80	133.01	1,238.3	-23.0	24.7	33.7	2.00	2.00	0.00
1,280.0	9.60	133.01	1,277.8	-27.4	29.3	40.1	2.00	2.00	0.00
1,320.0	10.40	133.01	1,317.1	-32.1	34.4	47.1	2.00	2.00	0.00
1,360.0	11.20	133.01	1,356.4	-37.2	39.9	54.6	2.00	2.00	0.00
1,400.0	12.00	133.01	1,395.6	-42.7	45.8	62.6	2.00	2.00	0.00
1,440.0	12.80	133.01	1,434.7	-48.6	52.1	71.2	2.00	2.00	0.00
1,480.0	13.60	133.01	1,473.6	-54.8	58.7	80.3	2.00	2.00	0.00
1,520.0	14.40	133.01	1,512.4	-61.4	65.8	90.0	2.00	2.00	0.00
1,545.4	14.91	133.01	1,537.1	-65.8	70.5	96.4	2.00	2.00	0.00
1,560.0	14.91	133.01	1,551.1	-68.3	73.3	100.2	0.00	0.00	0.00
1,600.0	14.91	133.01	1,589.8	-75.4	80.8	110.5	0.00	0.00	0.00
1,640.0	14.91	133.01	1,628.4	-82.4	88.3	120.8	0.00	0.00	0.00
1,680.0	14.91	133.01	1,667.1	-89.4	95.8	131.1	0.00	0.00	0.00
1,720.0	14.91	133.01	1,705.7	-96.4	103.4	141.3	0.00	0.00	0.00
1,760.0	14.91	133.01	1,744.4	-103.4	110.9	151.6	0.00	0.00	0.00
1,800.0	14.91	133.01	1,783.0	-110.5	118.4	161.9	0.00	0.00	0.00
1,840.0	14.91	133.01	1,821.7	-117.5	125.9	172.2	0.00	0.00	0.00
1,880.0	14.91	133.01	1,860.4	-124.5	133.5	182.5	0.00	0.00	0.00
1,920.0	14.91	133.01	1,899.0	-131.5	141.0	192.8	0.00	0.00	0.00
1,960.0	14.91	133.01	1,937.7	-138.5	148.5	203.1	0.00	0.00	0.00
2,000.0	14.91	133.01	1,976.3	-145.6	156.0	213.4	0.00	0.00	0.00

Database: Landmark
Company: NOBLE ENERGY INC WELD COUNTY CO
Project: SEC.36-T5N-R66W
Site: Sylvester G06-30D Sec.36-T5N-R66W
Well: Sylvester G06-30D
Wellbore: Wellbore #1
Design: Noble Sylvester G06-30D Plan #2 (7-26-10)

Local Co-ordinate Reference: Well Sylvester G06-30D
TVD Reference: WELL @ 4675.0ft (Original Well Elev)
MD Reference: WELL @ 4675.0ft (Original Well Elev)
North Reference: True
Survey Calculation Method: Minimum Curvature

Planned Survey

Measured Depth (ft)	Inclination (°)	Azimuth (°)	Vertical Depth (ft)	+N/-S (ft)	+E/-W (ft)	Vertical Section (ft)	Dogleg Rate (°/100ft)	Build Rate (°/100ft)	Turn Rate (°/100ft)
2,040.0	14.91	133.01	2,015.0	-152.6	163.6	223.7	0.00	0.00	0.00
2,080.0	14.91	133.01	2,053.6	-159.6	171.1	234.0	0.00	0.00	0.00
2,120.0	14.91	133.01	2,092.3	-166.6	178.6	244.3	0.00	0.00	0.00
2,160.0	14.91	133.01	2,130.9	-173.6	186.1	254.6	0.00	0.00	0.00
2,200.0	14.91	133.01	2,169.6	-180.7	193.7	264.8	0.00	0.00	0.00
2,240.0	14.91	133.01	2,208.2	-187.7	201.2	275.1	0.00	0.00	0.00
2,280.0	14.91	133.01	2,246.9	-194.7	208.7	285.4	0.00	0.00	0.00
2,320.0	14.91	133.01	2,285.5	-201.7	216.2	295.7	0.00	0.00	0.00
2,360.0	14.91	133.01	2,324.2	-208.7	223.8	306.0	0.00	0.00	0.00
2,400.0	14.91	133.01	2,362.8	-215.7	231.3	316.3	0.00	0.00	0.00
2,440.0	14.91	133.01	2,401.5	-222.8	238.8	326.6	0.00	0.00	0.00
2,480.0	14.91	133.01	2,440.2	-229.8	246.3	336.9	0.00	0.00	0.00
2,520.0	14.91	133.01	2,478.8	-236.8	253.9	347.2	0.00	0.00	0.00
2,560.0	14.91	133.01	2,517.5	-243.8	261.4	357.5	0.00	0.00	0.00
2,600.0	14.91	133.01	2,556.1	-250.8	268.9	367.8	0.00	0.00	0.00
2,640.0	14.91	133.01	2,594.8	-257.9	276.4	378.0	0.00	0.00	0.00
2,680.0	14.91	133.01	2,633.4	-264.9	284.0	388.3	0.00	0.00	0.00
2,720.0	14.91	133.01	2,672.1	-271.9	291.5	398.6	0.00	0.00	0.00
2,760.0	14.91	133.01	2,710.7	-278.9	299.0	408.9	0.00	0.00	0.00
2,800.0	14.91	133.01	2,749.4	-285.9	306.6	419.2	0.00	0.00	0.00
2,840.0	14.91	133.01	2,788.0	-293.0	314.1	429.5	0.00	0.00	0.00
2,880.0	14.91	133.01	2,826.7	-300.0	321.6	439.8	0.00	0.00	0.00
2,920.0	14.91	133.01	2,865.3	-307.0	329.1	450.1	0.00	0.00	0.00
2,960.0	14.91	133.01	2,904.0	-314.0	336.7	460.4	0.00	0.00	0.00
3,000.0	14.91	133.01	2,942.7	-321.0	344.2	470.7	0.00	0.00	0.00
3,040.0	14.91	133.01	2,981.3	-328.1	351.7	481.0	0.00	0.00	0.00
3,080.0	14.91	133.01	3,020.0	-335.1	359.2	491.2	0.00	0.00	0.00
3,120.0	14.91	133.01	3,058.6	-342.1	366.8	501.5	0.00	0.00	0.00
3,160.0	14.91	133.01	3,097.3	-349.1	374.3	511.8	0.00	0.00	0.00
3,200.0	14.91	133.01	3,135.9	-356.1	381.8	522.1	0.00	0.00	0.00
3,240.0	14.91	133.01	3,174.6	-363.2	389.3	532.4	0.00	0.00	0.00
3,280.0	14.91	133.01	3,213.2	-370.2	396.9	542.7	0.00	0.00	0.00
3,320.0	14.91	133.01	3,251.9	-377.2	404.4	553.0	0.00	0.00	0.00
3,360.0	14.91	133.01	3,290.5	-384.2	411.9	563.3	0.00	0.00	0.00
3,400.0	14.91	133.01	3,329.2	-391.2	419.4	573.6	0.00	0.00	0.00
3,440.0	14.91	133.01	3,367.8	-398.3	427.0	583.9	0.00	0.00	0.00
3,480.0	14.91	133.01	3,406.5	-405.3	434.5	594.2	0.00	0.00	0.00
3,520.0	14.91	133.01	3,445.1	-412.3	442.0	604.5	0.00	0.00	0.00
3,560.0	14.91	133.01	3,483.8	-419.3	449.5	614.7	0.00	0.00	0.00
3,600.0	14.91	133.01	3,522.5	-426.3	457.1	625.0	0.00	0.00	0.00
3,640.0	14.91	133.01	3,561.1	-433.4	464.6	635.3	0.00	0.00	0.00
3,680.0	14.91	133.01	3,599.8	-440.4	472.1	645.6	0.00	0.00	0.00
3,720.0	14.91	133.01	3,638.4	-447.4	479.6	655.9	0.00	0.00	0.00
3,760.0	14.91	133.01	3,677.1	-454.4	487.2	666.2	0.00	0.00	0.00
3,800.0	14.91	133.01	3,715.7	-461.4	494.7	676.5	0.00	0.00	0.00
3,840.0	14.91	133.01	3,754.4	-468.5	502.2	686.8	0.00	0.00	0.00
3,880.0	14.91	133.01	3,793.0	-475.5	509.7	697.1	0.00	0.00	0.00
3,920.0	14.91	133.01	3,831.7	-482.5	517.3	707.4	0.00	0.00	0.00
3,960.0	14.91	133.01	3,870.3	-489.5	524.8	717.7	0.00	0.00	0.00
4,000.0	14.91	133.01	3,909.0	-496.5	532.3	727.9	0.00	0.00	0.00
4,040.0	14.91	133.01	3,947.6	-503.6	539.8	738.2	0.00	0.00	0.00
4,080.0	14.91	133.01	3,986.3	-510.6	547.4	748.5	0.00	0.00	0.00
4,120.0	14.91	133.01	4,024.9	-517.6	554.9	758.8	0.00	0.00	0.00
4,160.0	14.91	133.01	4,063.6	-524.6	562.4	769.1	0.00	0.00	0.00

Database: Landmark
Company: NOBLE ENERGY INC WELD COUNTY CO
Project: SEC.36-T5N-R66W
Site: Sylvester G06-30D Sec.36-T5N-R66W
Well: Sylvester G06-30D
Wellbore: Wellbore #1
Design: Noble Sylvester G06-30D Plan #2 (7-26-10)

Local Co-ordinate Reference: Well Sylvester G06-30D
TVD Reference: WELL @ 4675.0ft (Original Well Elev)
MD Reference: WELL @ 4675.0ft (Original Well Elev)
North Reference: True
Survey Calculation Method: Minimum Curvature

Planned Survey

Measured Depth (ft)	Inclination (°)	Azimuth (°)	Vertical Depth (ft)	+N/-S (ft)	+E/-W (ft)	Vertical Section (ft)	Dogleg Rate (°/100ft)	Build Rate (°/100ft)	Turn Rate (°/100ft)
4,200.0	14.91	133.01	4,102.3	-531.6	569.9	779.4	0.00	0.00	0.00
4,240.0	14.91	133.01	4,140.9	-538.7	577.5	789.7	0.00	0.00	0.00
4,280.0	14.91	133.01	4,179.6	-545.7	585.0	800.0	0.00	0.00	0.00
4,320.0	14.91	133.01	4,218.2	-552.7	592.5	810.3	0.00	0.00	0.00
4,360.0	14.91	133.01	4,256.9	-559.7	600.0	820.6	0.00	0.00	0.00
4,366.3	14.91	133.01	4,262.9	-560.8	601.2	822.2	0.00	0.00	0.00
4,400.0	14.23	133.01	4,295.6	-566.6	607.4	830.7	2.00	-2.00	0.00
4,440.0	13.43	133.01	4,334.4	-573.1	614.4	840.2	2.00	-2.00	0.00
4,480.0	12.63	133.01	4,373.4	-579.3	621.0	849.3	2.00	-2.00	0.00
4,520.0	11.83	133.01	4,412.5	-585.1	627.2	857.7	2.00	-2.00	0.00
4,560.0	11.03	133.01	4,451.7	-590.5	633.0	865.7	2.00	-2.00	0.00
4,600.0	10.23	133.01	4,491.0	-595.5	638.4	873.0	2.00	-2.00	0.00
4,640.0	9.43	133.01	4,530.4	-600.2	643.4	879.9	2.00	-2.00	0.00
4,680.0	8.63	133.01	4,569.9	-604.5	648.0	886.2	2.00	-2.00	0.00
4,720.0	7.83	133.01	4,609.5	-608.4	652.2	891.9	2.00	-2.00	0.00
4,760.0	7.03	133.01	4,649.2	-611.9	656.0	897.1	2.00	-2.00	0.00
4,800.0	6.23	133.01	4,688.9	-615.0	659.4	901.7	2.00	-2.00	0.00
4,840.0	5.43	133.01	4,728.7	-617.8	662.3	905.7	2.00	-2.00	0.00
4,880.0	4.63	133.01	4,768.5	-620.2	664.9	909.3	2.00	-2.00	0.00
4,920.0	3.83	133.01	4,808.4	-622.2	667.1	912.2	2.00	-2.00	0.00
4,960.0	3.03	133.01	4,848.3	-623.9	668.8	914.6	2.00	-2.00	0.00
5,000.0	2.23	133.01	4,888.3	-625.1	670.2	916.4	2.00	-2.00	0.00
5,040.0	1.43	133.01	4,928.3	-626.0	671.1	917.7	2.00	-2.00	0.00
5,080.0	0.63	133.01	4,968.3	-626.5	671.6	918.4	2.00	-2.00	0.00
5,111.7	0.00	0.00	5,000.0	-626.6	671.7	918.6	2.00	-2.00	-419.25
TARGET BHL 75°FSL, 75°FEL									
5,120.0	0.00	0.00	5,008.3	-626.6	671.7	918.6	0.00	0.00	0.00
5,160.0	0.00	0.00	5,048.3	-626.6	671.7	918.6	0.00	0.00	0.00
5,200.0	0.00	0.00	5,088.3	-626.6	671.7	918.6	0.00	0.00	0.00
5,240.0	0.00	0.00	5,128.3	-626.6	671.7	918.6	0.00	0.00	0.00
5,280.0	0.00	0.00	5,168.3	-626.6	671.7	918.6	0.00	0.00	0.00
5,320.0	0.00	0.00	5,208.3	-626.6	671.7	918.6	0.00	0.00	0.00
5,360.0	0.00	0.00	5,248.3	-626.6	671.7	918.6	0.00	0.00	0.00
5,400.0	0.00	0.00	5,288.3	-626.6	671.7	918.6	0.00	0.00	0.00
5,440.0	0.00	0.00	5,328.3	-626.6	671.7	918.6	0.00	0.00	0.00
5,480.0	0.00	0.00	5,368.3	-626.6	671.7	918.6	0.00	0.00	0.00
5,520.0	0.00	0.00	5,408.3	-626.6	671.7	918.6	0.00	0.00	0.00
5,560.0	0.00	0.00	5,448.3	-626.6	671.7	918.6	0.00	0.00	0.00
5,600.0	0.00	0.00	5,488.3	-626.6	671.7	918.6	0.00	0.00	0.00
5,640.0	0.00	0.00	5,528.3	-626.6	671.7	918.6	0.00	0.00	0.00
5,680.0	0.00	0.00	5,568.3	-626.6	671.7	918.6	0.00	0.00	0.00
5,720.0	0.00	0.00	5,608.3	-626.6	671.7	918.6	0.00	0.00	0.00
5,760.0	0.00	0.00	5,648.3	-626.6	671.7	918.6	0.00	0.00	0.00
5,800.0	0.00	0.00	5,688.3	-626.6	671.7	918.6	0.00	0.00	0.00
5,840.0	0.00	0.00	5,728.3	-626.6	671.7	918.6	0.00	0.00	0.00
5,880.0	0.00	0.00	5,768.3	-626.6	671.7	918.6	0.00	0.00	0.00
5,920.0	0.00	0.00	5,808.3	-626.6	671.7	918.6	0.00	0.00	0.00
5,960.0	0.00	0.00	5,848.3	-626.6	671.7	918.6	0.00	0.00	0.00
6,000.0	0.00	0.00	5,888.3	-626.6	671.7	918.6	0.00	0.00	0.00
6,040.0	0.00	0.00	5,928.3	-626.6	671.7	918.6	0.00	0.00	0.00
6,080.0	0.00	0.00	5,968.3	-626.6	671.7	918.6	0.00	0.00	0.00
6,120.0	0.00	0.00	6,008.3	-626.6	671.7	918.6	0.00	0.00	0.00
6,160.0	0.00	0.00	6,048.3	-626.6	671.7	918.6	0.00	0.00	0.00
6,200.0	0.00	0.00	6,088.3	-626.6	671.7	918.6	0.00	0.00	0.00

Database: Landmark
 Company: NOBLE ENERGY INC WELD COUNTY CO
 Project: SEC.36-T5N-R66W
 Site: Sylvester G06-30D Sec.36-T5N-R66W
 Well: Sylvester G06-30D
 Wellbore: Wellbore #1
 Design: Noble Sylvester G06-30D Plan #2 (7-26-10)

Local Co-ordinate Reference: Well Sylvester G06-30D
 TVD Reference: WELL @ 4675.0ft (Original Well Elev)
 MD Reference: WELL @ 4675.0ft (Original Well Elev)
 North Reference: True
 Survey Calculation Method: Minimum Curvature

Planned Survey

Measured Depth (ft)	Inclination (°)	Azimuth (°)	Vertical Depth (ft)	+N/-S (ft)	+E/-W (ft)	Vertical Section (ft)	Dogleg Rate (°/100ft)	Build Rate (°/100ft)	Turn Rate (°/100ft)
6,240.0	0.00	0.00	6,128.3	-626.6	671.7	918.6	0.00	0.00	0.00
6,280.0	0.00	0.00	6,168.3	-626.6	671.7	918.6	0.00	0.00	0.00
6,320.0	0.00	0.00	6,208.3	-626.6	671.7	918.6	0.00	0.00	0.00
6,360.0	0.00	0.00	6,248.3	-626.6	671.7	918.6	0.00	0.00	0.00
6,400.0	0.00	0.00	6,288.3	-626.6	671.7	918.6	0.00	0.00	0.00
6,440.0	0.00	0.00	6,328.3	-626.6	671.7	918.6	0.00	0.00	0.00
6,480.0	0.00	0.00	6,368.3	-626.6	671.7	918.6	0.00	0.00	0.00
6,520.0	0.00	0.00	6,408.3	-626.6	671.7	918.6	0.00	0.00	0.00
6,560.0	0.00	0.00	6,448.3	-626.6	671.7	918.6	0.00	0.00	0.00
6,600.0	0.00	0.00	6,488.3	-626.6	671.7	918.6	0.00	0.00	0.00
6,640.0	0.00	0.00	6,528.3	-626.6	671.7	918.6	0.00	0.00	0.00
6,680.0	0.00	0.00	6,568.3	-626.6	671.7	918.6	0.00	0.00	0.00
6,720.0	0.00	0.00	6,608.3	-626.6	671.7	918.6	0.00	0.00	0.00
6,760.0	0.00	0.00	6,648.3	-626.6	671.7	918.6	0.00	0.00	0.00
6,800.0	0.00	0.00	6,688.3	-626.6	671.7	918.6	0.00	0.00	0.00
6,840.0	0.00	0.00	6,728.3	-626.6	671.7	918.6	0.00	0.00	0.00
6,880.0	0.00	0.00	6,768.3	-626.6	671.7	918.6	0.00	0.00	0.00
6,916.7	0.00	0.00	6,805.0	-626.6	671.7	918.6	0.00	0.00	0.00
NIOBRARA - TARGET CIRCLE 75'FSL, 75'FEL									
6,920.0	0.00	0.00	6,808.3	-626.6	671.7	918.6	0.00	0.00	0.00
6,960.0	0.00	0.00	6,848.3	-626.6	671.7	918.6	0.00	0.00	0.00
7,000.0	0.00	0.00	6,888.3	-626.6	671.7	918.6	0.00	0.00	0.00
7,040.0	0.00	0.00	6,928.3	-626.6	671.7	918.6	0.00	0.00	0.00
7,080.0	0.00	0.00	6,968.3	-626.6	671.7	918.6	0.00	0.00	0.00
7,120.0	0.00	0.00	7,008.3	-626.6	671.7	918.6	0.00	0.00	0.00
7,160.0	0.00	0.00	7,048.3	-626.6	671.7	918.6	0.00	0.00	0.00
7,200.0	0.00	0.00	7,088.3	-626.6	671.7	918.6	0.00	0.00	0.00
7,236.7	0.00	0.00	7,125.0	-626.6	671.7	918.6	0.00	0.00	0.00
CODELL									
7,240.0	0.00	0.00	7,128.3	-626.6	671.7	918.6	0.00	0.00	0.00
7,280.0	0.00	0.00	7,168.3	-626.6	671.7	918.6	0.00	0.00	0.00
7,320.0	0.00	0.00	7,208.3	-626.6	671.7	918.6	0.00	0.00	0.00
7,360.0	0.00	0.00	7,248.3	-626.6	671.7	918.6	0.00	0.00	0.00
7,386.7	0.00	0.00	7,275.0	-626.6	671.7	918.6	0.00	0.00	0.00
HARDLINE 75'S & E OF BHL									

Database: Landmark
Company: NOBLE ENERGY INC WELD COUNTY CO
Project: SEC.36-T5N-R66W
Site: Sylvester G06-30D Sec.36-T5N-R66W
Well: Sylvester G06-30D
Wellbore: Wellbore #1
Design: Noble Sylvester G06-30D Plan #2 (7-26-10)

Local Co-ordinate Reference: Well Sylvester G06-30D
TVD Reference: WELL @ 4675.0ft (Original Well Elev)
MD Reference: WELL @ 4675.0ft (Original Well Elev)
North Reference: True
Survey Calculation Method: Minimum Curvature

Targets

Target Name - hit/miss target - Shape	Dip Angle (°)	Dip Dir. (°)	TVD (ft)	+N/-S (ft)	+E/-W (ft)	Northing (ft)	Easting (ft)	Latitude	Longitude
TARGET BHL 75'FSL - plan hits target - Point	0.00	0.00	5,000.0	-626.6	671.7	1,370,827.24	3,218,528.53	40° 20' 55.212 N	104° 42' 57.420 W
HARDLINE 75'S & E - plan misses by 106.0ft at 7386.7ft MD (7275.0 TVD, -626.6 N, 671.7 E) - Polygon	0.00	0.00	7,275.0	-701.6	746.7	1,370,752.90	3,218,604.14	40° 20' 54.471 N	104° 42' 56.452 W
Point 1			7,275.0	0.0	0.0	1,370,752.90	3,218,604.14		
Point 2			7,275.0	0.0	-200.0	1,370,751.14	3,218,404.16		
Point 3			7,275.0	0.0	0.0	1,370,752.90	3,218,604.14		
Point 4			7,275.0	200.0	0.0	1,370,952.89	3,218,602.38		
TARGET CIRCLE 75' - plan hits target - Circle (radius 75.0)	0.00	0.00	6,805.0	-626.6	671.7	1,370,827.24	3,218,528.49	40° 20' 55.212 N	104° 42' 57.421 W

Casing Points

Measured Depth (ft)	Vertical Depth (ft)	Name	Casing Diameter (")	Hole Diameter (")
650.0	650.0	8 5/8"	8-5/8	12-1/4

Formations

Measured Depth (ft)	Vertical Depth (ft)	Name	Lithology	Dip (°)	Dip Direction (°)
6,916.7	6,805.0	NIOBRARA		0.00	
7,236.7	7,125.0	CODELL		0.00	