

T6S, R96W, 6th P.M.

# WILLIAMS PRODUCTION RMT COMPANY

Well location, MOBIL GM 333-22 (SURFACE LOCATION), located as shown in the NW 1/4 SW 1/4 of Section 23, T6S, R96W, 6th P.M., Garfield County, Colorado.

## BASIS OF ELEVATION

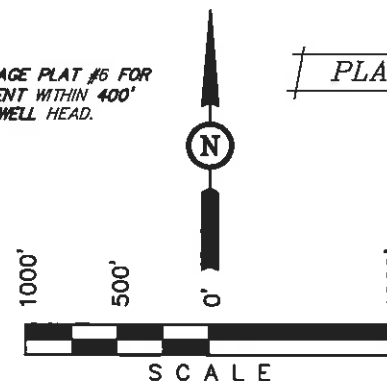
SPOT ELEVATION AT THE NORTHWEST CORNER OF SECTION 30, T5S, R95W, 6th P.M. TAKEN FROM THE FORKED GULCH QUADRANGLE, COLORADO, GARFIELD COUNTY, 7.5 MINUTE SERIES (TOPOGRAPHICAL MAP) PUBLISHED BY THE UNITED STATES DEPARTMENT OF THE INTERIOR, GEOLOGICAL SURVEY. SAID ELEVATION IS MARKED AS BEING 5966 FEET.

## BASIS OF BEARINGS

BASIS OF BEARINGS IS A G.P.S. OBSERVATION.

NOTE:  
SEE CURRENT FOOTAGE PLAT #6 FOR  
EXISTING IMPROVEMENT WITHIN 400'  
OF THE PROPOSED WELL HEAD.

PLAT #1



## CERTIFICATE

THIS IS TO CERTIFY THAT THE ABOVE PLAT WAS PREPARED FROM FIELD NOTES OF ACTUAL SURVEYS MADE BY ME OR UNDER MY SUPERVISION AND THAT THE SAME ARE TRUE AND CORRECT TO THE BEST OF MY KNOWLEDGE AND BELIEF.

REGISTERED LAND SURVEYOR  
REGISTRATION NO. 11932  
STATE OF COLORADO

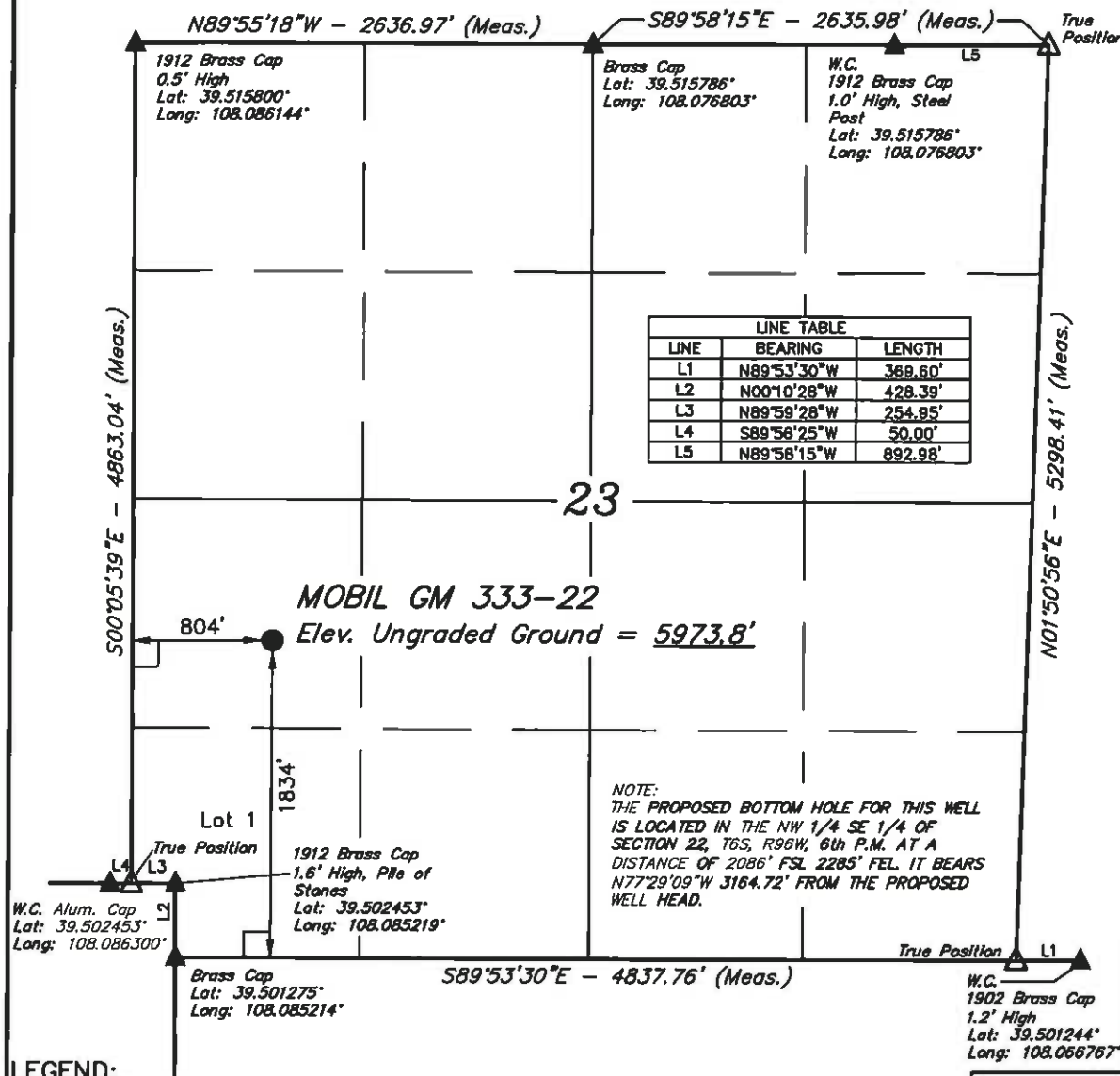
Revised: 02-01-11 D.R.B.

**UINTAH ENGINEERING & LAND SURVEYING**  
65 SOUTH 200 EAST - VERNAL, UTAH 84078  
(435) 789-1017

SCALE 1" = 1000'	DATE SURVEYED: 04-13-10	DATE DRAWN: 10-20-10
PARTY G.O. B.B. D.R.B.	REFERENCES G.L.O. PLAT	
WEATHER WARM	FILE WILLIAMS PRODUCTION RMT COMPANY	

LINE TABLE		
LINE	BEARING	LENGTH
L1	N89°53'30"W	389.60'
L2	N00°10'28"W	428.39'
L3	N89°59'28"W	254.85'
L4	S89°56'25"W	50.00'
L5	N89°58'15"W	892.98'

NOTE:  
THE PROPOSED BOTTOM HOLE FOR THIS WELL  
IS LOCATED IN THE NW 1/4 SE 1/4 OF  
SECTION 22, T6S, R96W, 6th P.M. AT A  
DISTANCE OF 2086' FSL 2285' FEL IT BEARS  
N77°29'09"W 3164.72' FROM THE PROPOSED  
WELL HEAD.



## LEGEND:

- └─┘ = 90° SYMBOL
- = PROPOSED WELL HEAD.
- ▲ = SECTION CORNERS LOCATED.

PDOP = 3.7

NAD 83 (SURFACE LOCATION)  
LATITUDE = 39°30'22.71" (39.508308)  
LONGITUDE = 108°04'59.82" (108.083283)  
STATE PLANE-(COLO. CENTRAL-NAD 83)  
N = 1619663.873  
E = 2271201.507

T6S, R96W, 6th P.M.

# WILLIAMS PRODUCTION RMT COMPANY

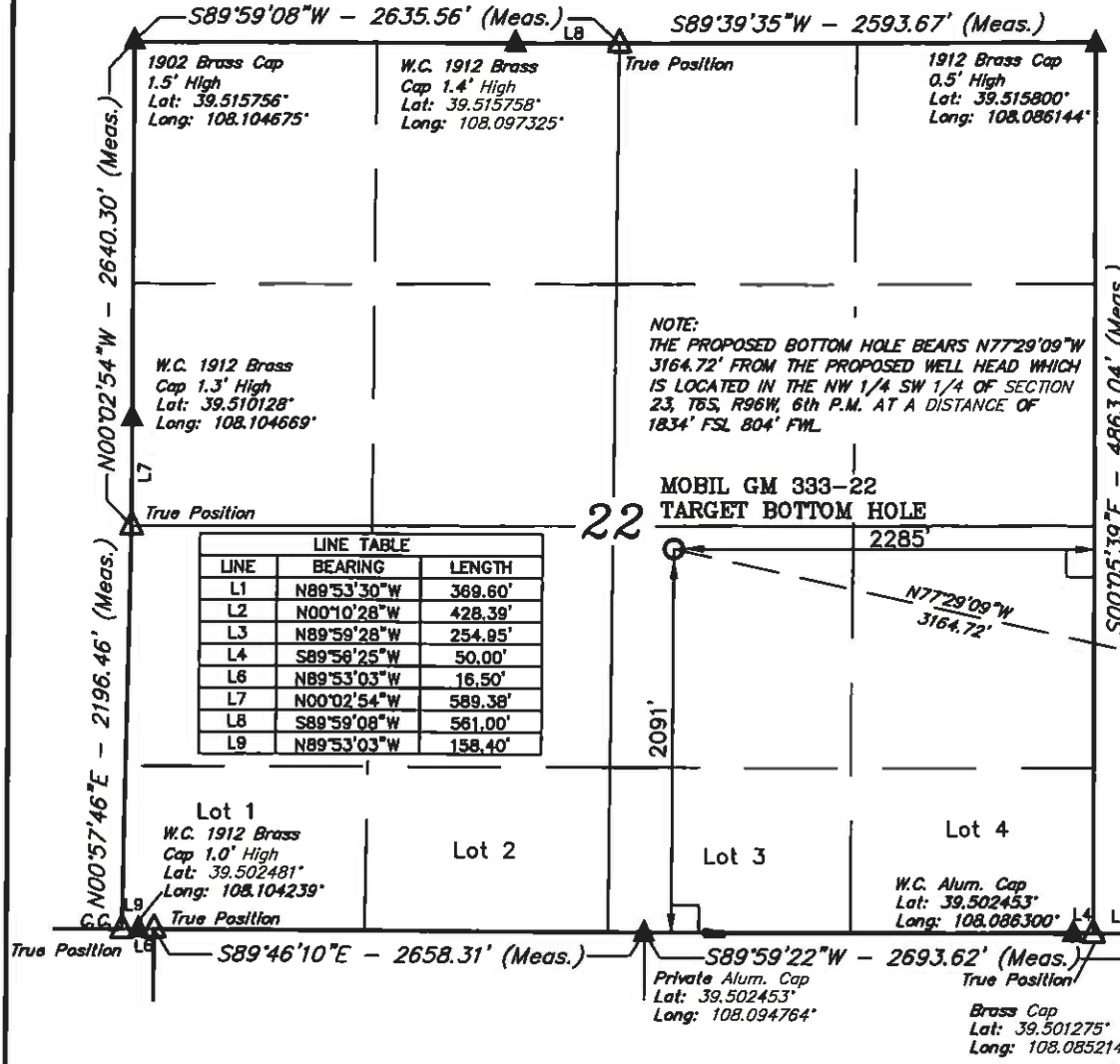
Well location, MOBIL GM 333-22 (TARGET BOTTOM HOLE), located as shown in the NW 1/4 SE 1/4 of Section 22, T6S, R96W, 6th P.M., Garfield County, Colorado.

## BASIS OF ELEVATION

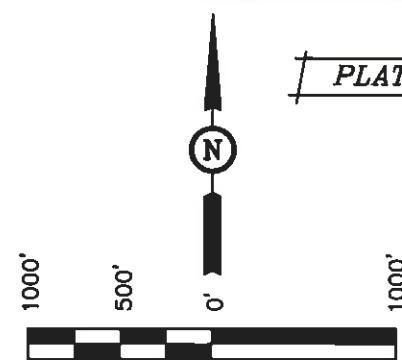
SPOT ELEVATION AT THE NORTHWEST CORNER OF SECTION 30, T5S, R95W, 6th P.M. TAKEN FROM THE FORKED GULCH QUADRANGLE, COLORADO, GARFIELD COUNTY, 7.5 MINUTE SERIES (TOPOGRAPHICAL MAP) PUBLISHED BY THE UNITED STATES DEPARTMENT OF THE INTERIOR, GEOLOGICAL SURVEY. SAID ELEVATION IS MARKED AS BEING 5966 FEET.

## BASIS OF BEARINGS

BASIS OF BEARINGS IS A G.P.S. OBSERVATION.



PLAT #1



## MOBIL GM 333-22 SURFACE LOCATION CERTIFICATE

THIS IS TO CERTIFY THAT THE ABOVE PLAT WAS PREPARED AND LOCATION AS SHOWN WAS STAKED ON THE GROUND FROM FIELD NOTES OF ACTUAL SURVEYS MADE BY ME OR UNDER MY SUPERVISION AND THAT THE SAME ARE TRUE AND CORRECT TO THE BEST OF MY KNOWLEDGE AND BELIEF.

REGISTERED LAND SURVEYOR  
REGISTRATION NO. 17492  
STATE OF COLORADO

Rev: 02-01-11 D.R.B.

**UINTAH ENGINEERING & LAND SURVEYING**  
**85 SOUTH 200 EAST - VERNAL, UTAH 84078**  
**(435) 789-1017**

## LEGEND:

- = 90° SYMBOL**
- = PROPOSED WELL HEAD.**
- = SECTION CORNERS LOCATED.**

**NAD 83 (TARGET BOTTOM HOLE)**  
LATITUDE = 39°30'29.49" (39.508192)  
LONGITUDE = 108°05'39.22" (108.084228)  
**STATE PLANE-(COLO. CENTRAL-NAD 83)**  
N = 1820437.800  
E = 2288133.900

SCALE 1" = 1000'	DATE SURVEYED: 04-13-10	DATE DRAWN: 10-20-10
PARTY G.O. B.B. D.R.B.	REFERENCES G.L.O. PLAT	
WEATHER WARM	FILE WILLIAMS PRODUCTION RMT COMPANY	