

WILLIAMS PRODUCTION RMT COMPANY

PLAT #2 CONSTRUCTION LAYOUT FOR MV 10-23
SECTION 23, T6S, R96W, 6th P.M.

SCALE: 1" = 50'

DATE: 06-03-10

DRAWN BY: D.R.B.

Rev: 06-16-10 D.R.B.

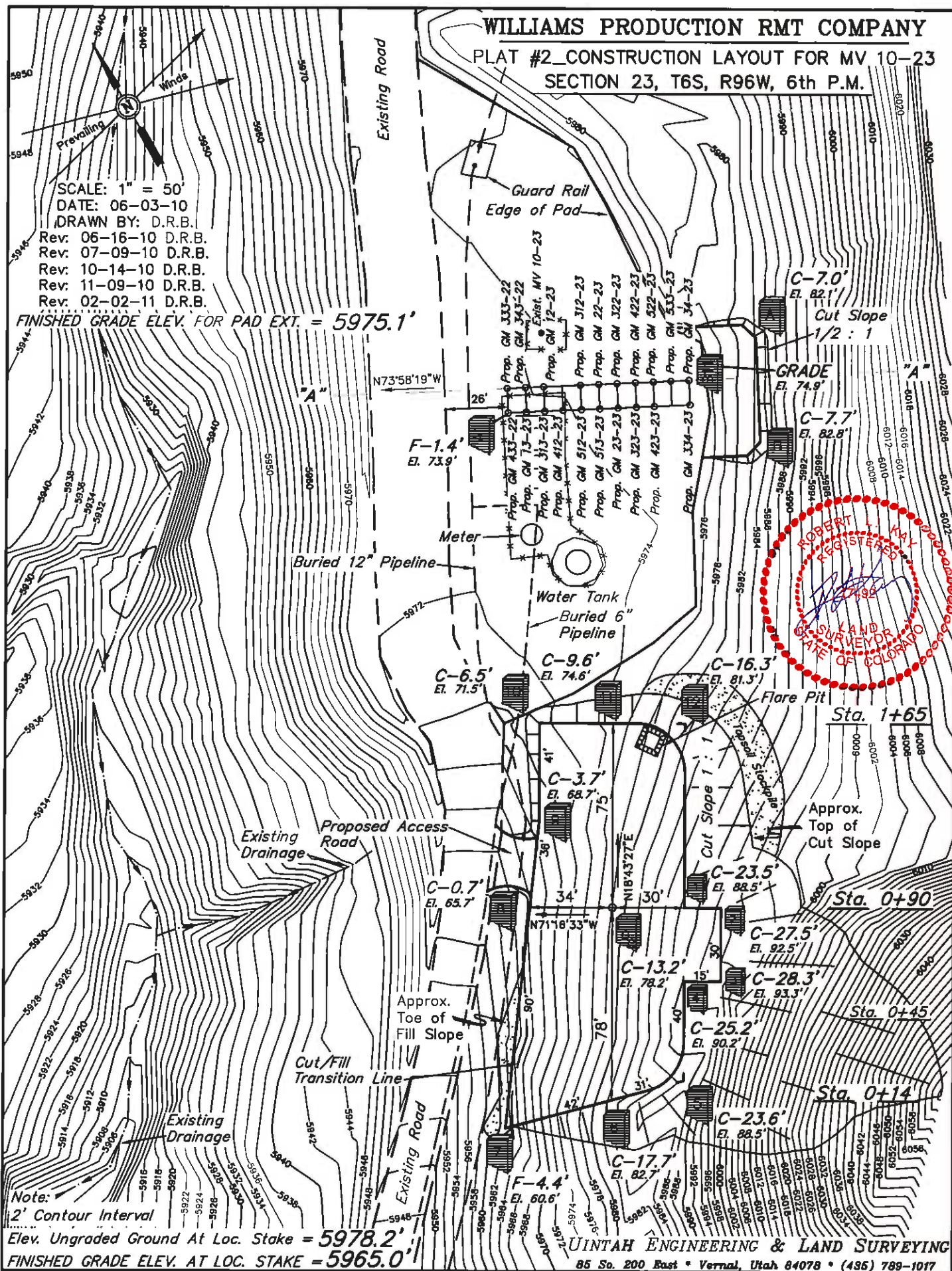
Rev: 07-09-10 D.R.B.

Rev: 10-14-10 D.R.B.

Rev: 11-09-10 D.R.B.

Rev: 02-02-11 D.R.B.

FINISHED GRADE ELEV. FOR PAD EXT. = 5975.1'



UINTAH ENGINEERING & LAND SURVEYING
85 So. 200 East • Vernal, Utah 84078 • (435) 789-1017

WILLIAMS PRODUCTION RMT COMPANY

PLAT #3_CONSTRUCTION LAYOUT CROSS SECTION FOR MV 10-23 SECTION 23, T6S, R96W, 6th P.M.

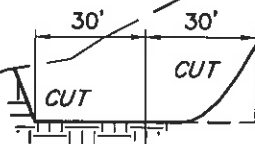
1" = 20'
X-Section
Scale
1" = 50'

DATE: 06-03-10
DRAWN BY: D.R.B.
Rev: 06-17-10 D.R.B.
Rev: 07-09-10 D.R.B.
Rev: 10-14-10 D.R.B.
Rev: 02-02-11 D.R.B.



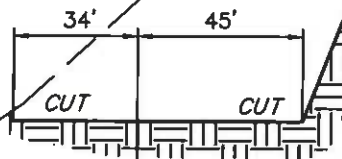
Cut Slope =
1/2 : 1 (Typ.)

"A" - "A"



STA. 1+65

Preconstruction
Grade



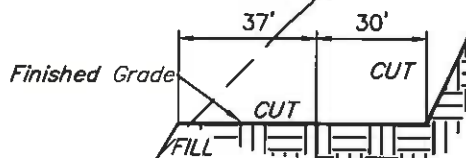
STA. 0+90

NOTE:

Topsoil should not be
Stripped Below Finished
Grade on Substructure Area.

NOTE:

EXCESS MATERIAL TO BE
HAUL OFF LOCATION.



STA. 0+45

Cut Slope =
1 : 1 (Typ.)

* NOTE:

FILL QUANTITY INCLUDES
5% FOR COMPACTION

APPROXIMATE YARDAGES

(6") Topsoil Stripping	=	530 Cu. Yds.
Remaining Location	=	8,950 Cu. Yds.
TOTAL CUT	=	9,480 CU.YDS.
FILL	=	20 CU.YDS.

EXCESS MATERIAL = 9,460 Cu. Yds.

Topsoil = 530 Cu. Yds.

EXCESS UNBALANCE = 8,930 Cu. Yds.
(After Interim Rehabilitation)

UINTAH ENGINEERING & LAND SURVEYING

85 So. 200 East • Vernal, Utah 84078 • (435) 789-1017

STA. 0+14

