

**OXY GRAND JUNCTION EBUSINESS
DO NOT MAIL
BROWNFIELD, Texas**

SHELL 797-03-39A

Nabors Industries LTD./Nabors M/-37

Post Job Summary **Cement Surface Casing**

Date Prepared: 12.01.2010
Version: 1

Service Supervisor: SMITH, CHRISTOPHER

Submitted by:

HALLIBURTON

The Road to Excellence Starts with Safety

Sold To #: 344034	Ship To #: 2822831	Quote #:	Sales Order #: 7810098
Customer: OXY GRAND JUNCTION EBUSINESS	Customer Rep: Goddeyene, Andy		
Well Name: SHELL	Well #: 797-03-39A	API/UWI #: 05-045-17886	
Field: GRAND VALLEY	City (SAP): PARACHUTE	County/Parish: Garfield	State: Colorado
Lat: N 39.478 deg. OR N 39 deg. 28 min. 42.1 secs.	Long: W 108.202 deg. OR W -109 deg. 47 min. 52.469 secs.		
Contractor: Nabors Industries LTD.	Rig/Platform Name/Num: Nabors M-37		
Job Purpose: Cement Surface Casing			
Well Type: Development Well	Job Type: Cement Surface Casing		
Sales Person: DUNNING, DUSTIN	Srv Supervisor: SMITH, CHRISTOPHER	MBU ID Emp #: 452619	

Job Personnel

HES Emp Name	Exp Hrs	Emp #	HES Emp Name	Exp Hrs	Emp #	HES Emp Name	Exp Hrs	Emp #
ARNOLD, EDWARD John	9	439784	JAMISON, PRICE W	9	229155	SMITH, CHRISTOPHER Scott	9	452619
WEAVER, CARLTON Russell	9	457698						

Equipment

HES Unit #	Distance-1 way	HES Unit #	Distance-1 way	HES Unit #	Distance-1 way	HES Unit #	Distance-1 way
10551730C	40 mile	10713212	40 mile	10741123	40 mile	10973571	40 mile
11259881	40 mile						

Job Hours

Date	On Location Hours	Operating Hours	Date	On Location Hours	Operating Hours	Date	On Location Hours	Operating Hours
12.01.2010	9	2						
TOTAL			Total is the sum of each column separately					

Job

Job Times

Formation Name	Formation Depth (MD) Top	Bottom	Called Out	Date	Time	Time Zone
Form Type		BHST	On Location	01 - Dec - 2010	06:30	MST
Job depth MD	1050. ft	Job Depth TVD	Job Started	01 - Dec - 2010	11:50	MST
Water Depth		Wk Ht Above Floor	Job Completed	01 - Dec - 2010	13:50	MST
Perforation Depth (MD) From		To	Departed Loc	01 - Dec - 2010	15:35	MST

Well Data

Description	New / Used	Max pressure psig	Size in	ID in	Weight lbm/ft	Thread	Grade	Top MD ft	Bottom MD ft	Top TVD ft	Bottom TVD ft
OPEN HOLE				12.25					1050.		
SURFACE CASEING	Unknown		9.625	8.921	36.		J-55		1028.		

Sales/Rental/3rd Party (HES)

Description	Qty	Qty uom	Depth	Supplier
PLUG,CMTG,TOP,9 5/8,HWE,8.16 MIN/9.06 MA	1	EA		

Tools and Accessories

Type	Size	Qty	Make	Depth	Type	Size	Qty	Make	Depth	Type	Size	Qty	Make
Guide Shoe					Packer					Top Plug	9.625	1	HES
Float Shoe					Bridge Plug					Bottom Plug			
Float Collar					Retainer					SSR plug set			
Insert Float										Plug Container	9.625	1	HES
Stage Tool										Centralizers			

Miscellaneous Materials

Gelling Agt	Conc	Surfactant	Conc	Acid Type	Qty	Conc	%
Treatment Fld	Conc	Inhibitor	Conc	Sand Type	Size	Qty	

Fluid Data									
Stage/Plug #: 1									
Fluid #	Stage Type	Fluid Name	Qty	Qty uom	Mixing Density lbm/gal	Yield ft ³ /sk	Mix Fluid Gal/sk	Rate bbl/min	Total Mix Fluid Gal/sk
1	Water Spacer		20.00	bbl	8.33	.0	.0	.0	
2	Gel Spacer		20.00	bbl	.	.0	.0	.0	
3	Water Spacer		20.00	bbl	.	.0	.0	.0	
4	VersaCem Lead Cement	VERSACEM (TM) SYSTEM (452010)	135.0	sacks	12.3	2.38	13.75		13.75
13.75 Gal		FRESH WATER							
5	SwiftCem Tail Cement	SWIFTCEN (TM) SYSTEM (452990)	110.0	sacks	14.2	1.43	6.85		6.85
6.85 Gal		FRESH WATER							
6	Displacement		75.00	bbl	.	.0	.0	.0	
Calculated Values		Pressures		Volumes					
Displacement	75.2	Shut In: Instant		Lost Returns		Cement Slurry	85.2	Pad	
Top Of Cement	SURFACE	5 Min		Cement Returns	7	Actual Displacement	75.2	Treatment	
Frac Gradient		15 Min		Spacers	60	Load and Breakdown		Total Job	220
Rates									
Circulating		Mixing	5	Displacement	5	Avg. Job	5		
Cement Left In Pipe	Amount	55 ft	Reason	Shoe Joint					
Frac Ring # 1 @	ID	Frac ring # 2 @	ID	Frac Ring # 3 @	ID	Frac Ring # 4 @	ID		
The Information Stated Herein Is Correct				Customer Representative Signature					

The Road to Excellence Starts with Safety

Sold To #: 344034	Ship To #: 2822831	Quote #:	Sales Order #: 7810098
Customer: OXY GRAND JUNCTION EBUSINESS		Customer Rep: Goddeyene, Andy	
Well Name: SHELL		Well #: 797-03-39A	API/UWI #: 05-045-17886
Field: GRAND VALLEY	City (SAP): PARACHUTE	County/Parish: Garfield	State: Colorado
Legal Description:			
Lat: N 39.478 deg. OR N 39 deg. 28 min. 42.1 secs.		Long: W 108.202 deg. OR W -109 deg. 47 min. 52.469 secs.	
Contractor: Nabors Industries LTD.		Rig/Platform Name/Num: Nabors M-37	
Job Purpose: Cement Surface Casing		Ticket Amount:	
Well Type: Development Well		Job Type: Cement Surface Casing	
Sales Person: DUNNING, DUSTIN		Srvc Supervisor: SMITH, CHRISTOPHER	MBU ID Emp #: 452619

Activity Description	Date/Time	Cht #	Rate bbl/ min	Volume bbl		Pressure psig		Comments
				Stage	Total	Tubing	Casing	
Call Out	12/01/2010 02:00							
Pre-Convoy Safety Meeting	12/01/2010 03:45							Including entire cement crew
Crew Leave Yard	12/01/2010 04:00							
Arrive At Loc	12/01/2010 06:00							Rig still pulling pipe.
Assessment Of Location Safety Meeting	12/01/2010 06:05							Water Test: Ph ;KCL ;S04 ;Fe ;Chlorides ;Calcium ;Temp ;TDS .
Pre-Rig Up Safety Meeting	12/01/2010 10:30							Including entire cement crew
Rig-Up Equipment	12/01/2010 10:45							1 Elite #2; 1 660 bulk truck; 1 hard line from pump to floor; 1 line to uprights. 9.625" compact head; #D1389
Rig-Up Completed	12/01/2010 11:15							
Pre-Job Safety Meeting	12/01/2010 11:40							Including everyone on location
Start Job	12/01/2010 11:50							TD 1050 ; TP 1028 ; SJ 45.25 ; OH 12.25 ; CASING 9.625 36# J55; MUD 9.4 ppg;
Other	12/01/2010 11:52							Fill lines with fresh water.
Pressure Test	12/01/2010 11:54						3290.0	PSI test good, no leaks.
Pump Spacer 1	12/01/2010 11:58		5	20			130.0	20 BBL fresh water.
Pump Spacer 2	12/01/2010 12:02		5	20			136.0	20 BBL FRESH WATER WITH 3 GAL OF LGC-36

Sold To # : 344034

Ship To # :2822831

Quote # :

Sales Order # :

7810098

SUMMIT Version: 7.20.130

Wednesday, December 01, 2010 03:06:00

Activity Description	Date/Time	Cht #	Rate bbl/min	Volume bbl		Pressure psig		Comments
				Stage	Total	Tubing	Casing	
Pump Spacer 1	12/01/2010 12:06		5	20			185.0	20 BBL OF FRESH WATER
Pump Lead Cement	12/01/2010 12:10		5	57.2			221.0	135SKs Lead cement, 12.3ppg; 2.38cf3; 13.75gal/sk.
Pump Tail Cement	12/01/2010 12:26		5	28			225.0	110SKs Tail cement, 14.2ppg; 1.43cf3; 6.85gal/sk. DOWNHOLE DENSOMETER NOT READING CORRECTLY SHUT DOWN TO ASSES SITUATION AND CORRECT. Per comp rep pumped last 4 bbls .5ppg light.
Shutdown	12/01/2010 12:39							
Drop Plug	12/01/2010 12:43							Plug left container.
Pump Displacement	12/01/2010 12:45		5	64.2			335.0	Fresh Water Displacement
Slow Rate	12/01/2010 12:58		2	10			220.0	Slow rate last ten BBLs
Bump Plug	12/01/2010 13:03		2		75.2		940.0	Bumped plug took 500 psi over.
Check Floats	12/01/2010 13:13							Floats held. .75 BBL back. 7BBLs OF GOOD CEMENT TO SURFACE.
Other	12/01/2010 13:17						1568.0	CASEING PRESSURE TEST. HOLD FOR 30 MIN. CASEING LOST 30PSI OVER 30 MIN.
End Job	12/01/2010 13:50							
Pre-Rig Down Safety Meeting	12/01/2010 14:00							Including entire cement crew.
Rig-Down Equipment	12/01/2010 14:05							
Rig-Down Completed	12/01/2010 14:30							
Pre-Convoy Safety Meeting	12/01/2010 15:30							Including entire cement crew.
Depart Location for Service Center or Other Site	12/01/2010 15:35							
Activity Description	Date/Time	Cht	Rate bbl/min	Volume bbl		Pressure psig		Comments

Sold To # : 344034

Ship To # : 2822831

Quote # :

Sales Order # :

7810098

SUMMIT Version: 7.20.130

Wednesday, December 01, 2010 03:06:00

HALLIBURTON

Cementing Job Log

		#		Stage	Total	Tubing	Casing	
Other	12/01/2010 15:35							Thank You for using Halliburton. Ed Arnold and crew.

Sold To # : 344034

Ship To # :2822831

Quote # :

Sales Order # : 7810098

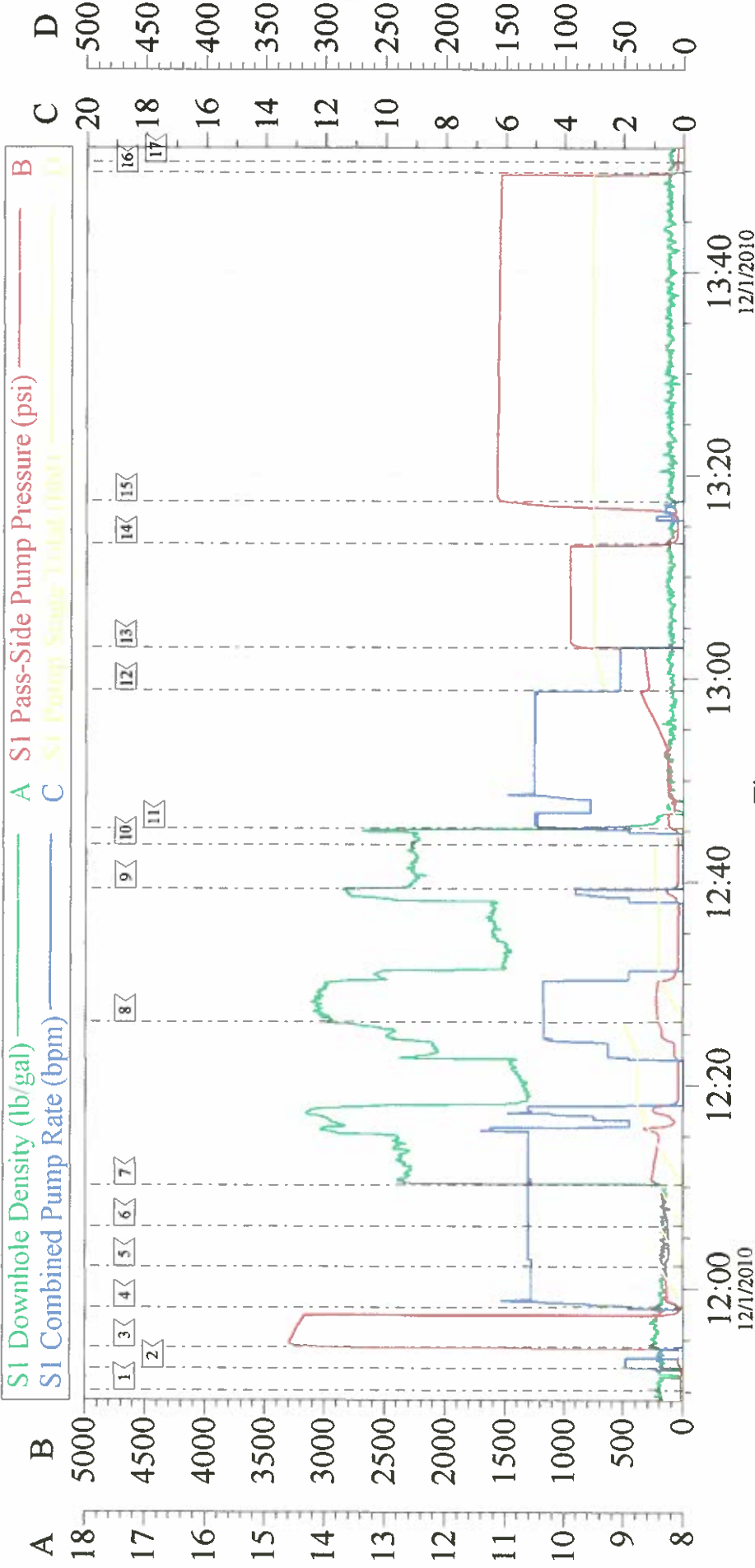
SUMMIT Version: 7.20.130

Wednesdav. December 01. 2010 03:06:00

OXY

9.625 SURFACE

SHELL 797-03-39A



Customer: OXY
Well Description: SHELL 797-03-39A
Company Rep: CODY LONG

Job Date: 01-Dec-2010
Job Type: SURFACE
Cement Supervisor: CHRIS SMITH

Sales Order #: 7810098
ADC Used: YES
Elite #: 2/RUSTY WEAVER