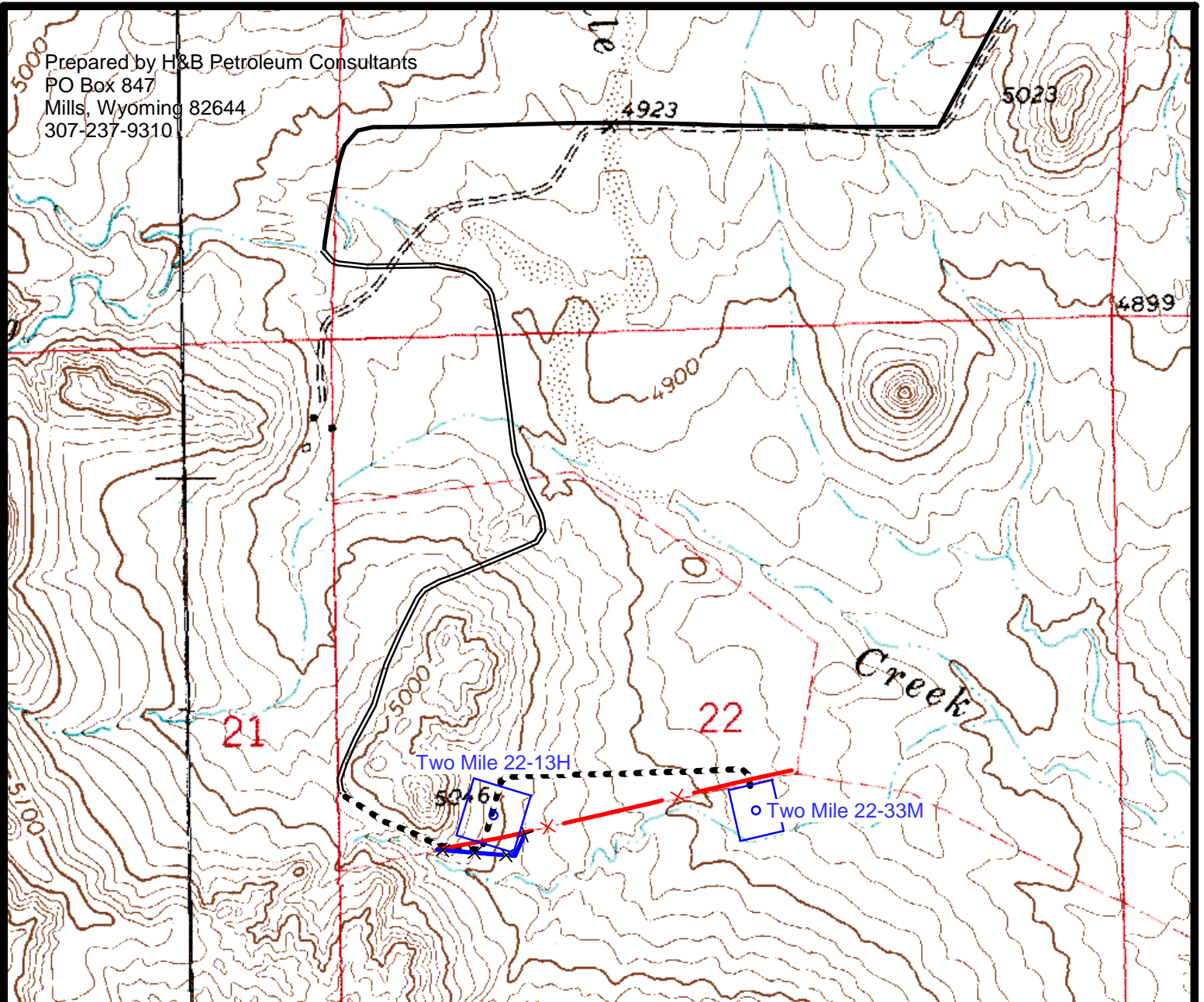


Prepared by H&B Petroleum Consultants
PO Box 847
Mills, Wyoming 82644
307-237-9310



Whiting Oil and Gas Corporation

Two Mile 22-13H & Two Mile 22-33M
Section 22 T11N R57W
Weld County, Colorado
Scale 1"=1000'
Access New Construction S/2 Section 22 = 198 Rods
Existing Road Sections 22 & 15 = 314 Rods
Existing Road Section 16 = 6 Rods

