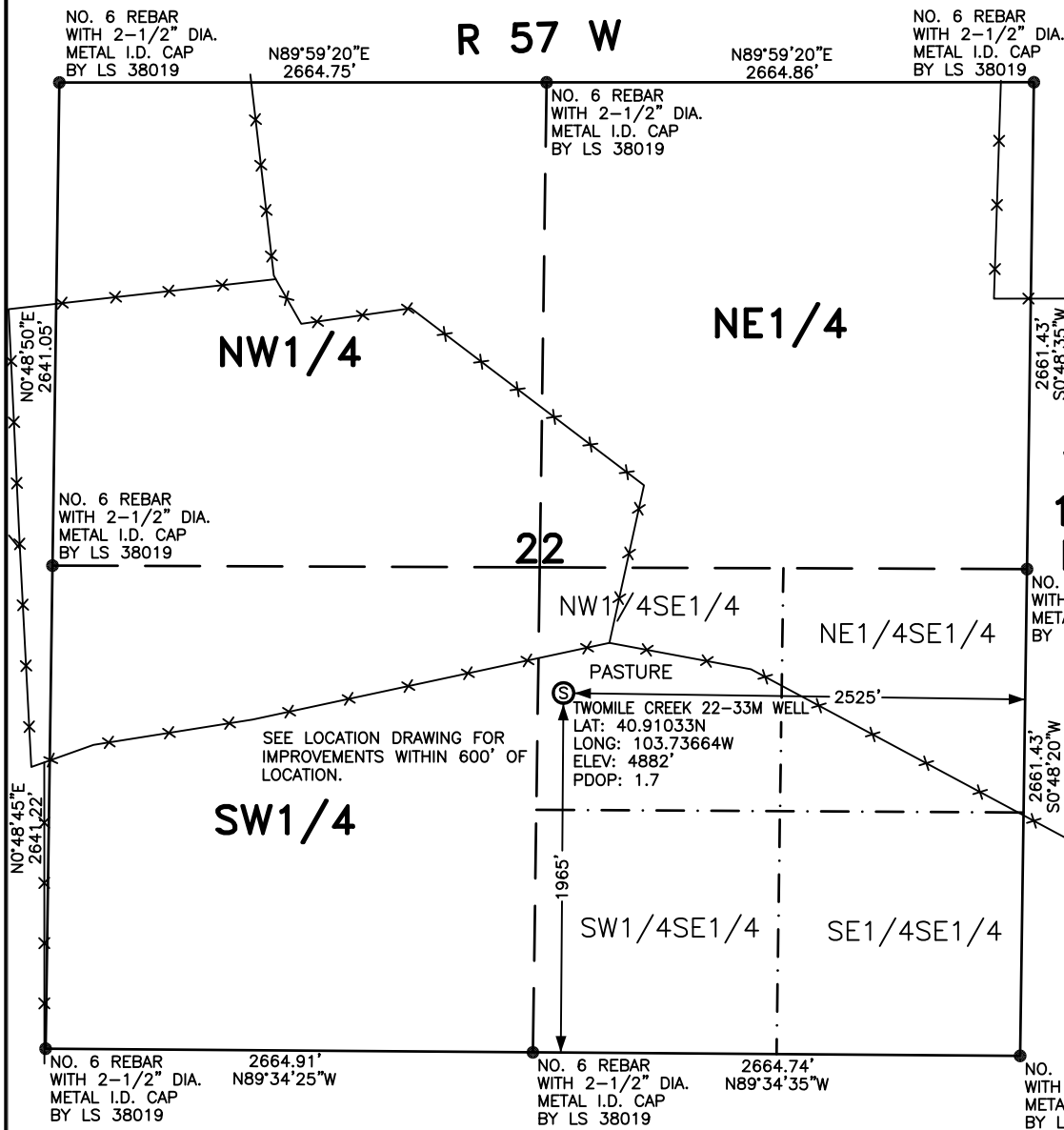


WELL LOCATION FOR WHITING OIL AND GAS CORPORATION

TWO MILE CREEK 22-33M



NOTES

BEARINGS SHOWN HEREON ARE BASED UPON RTK GPS OBSERVATIONS

SEE LOCATION DRAWING FOR IMPROVEMENTS WITHIN 600' OF LOCATION.

USGS QUAD MAP: BATTLE CANYON, COLO.

LAT/LONG VALUES ARE NAD83

ELEVATIONS BASED UPON NGS OPUS SOLUTION NAVD 88 DATUM

ALL DISTANCES TO SECTION LINES ARE MEASURED PERPENDICULAR TO AND ARE AT RIGHT ANGLES TO SAID SECTION LINES.

CALCULATED DIMENSIONS ARE IN PARENTHESES

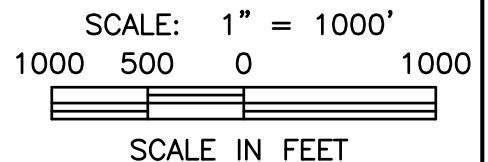
T
11
N

LEGEND

⊙ FIELD SURVEYED WELL LOCATION

== == == ROAD

-x-x- FENCE



THIS WELL LOCATION PLAT HAS BEEN PREPARED FOR WHITING OIL AND GAS CORPORATION, TO LOCATE THE TWO MILE CREEK 22-33M WELL BEING 2525 FEET FROM THE EAST LINE AND 1965 FEET FROM THE SOUTH LINE IN THE NW1/4SE1/4 OF SECTION 22, TOWNSHIP 11 NORTH, RANGE 57 WEST OF THE 6TH P.M., WELD COUNTY, COLORADO. THE SURFACE ELEVATION AT THIS POINT IS 4882 FEET. THIS IS NOT A LAND SURVEY PLAT.



LEIBERT-McATEE & ASSOCIATES, INC.

P.O. BOX 442 615 SOUTH TENTH AVENUE
STERLING, CO 80751 970-522-1960

FIELD DATE: 9-27-10	DWG DATE: 10-8-10	GPS OPERATOR: DARREN VEAL
TWO MILE CREEK 22-33M	DWG NO. 1131-10	SHEET 1 OF 1