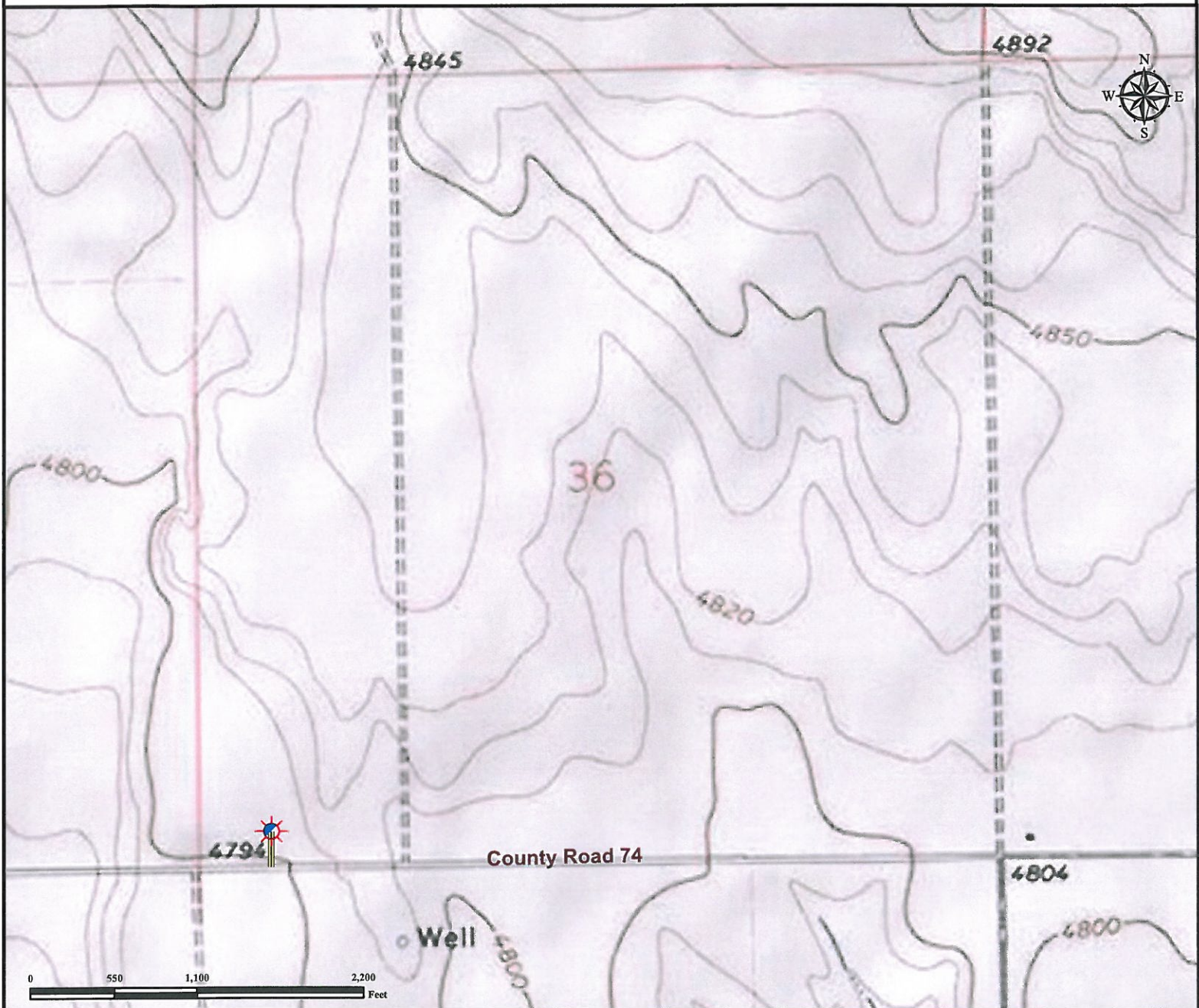


Access Road Map

FRANK TRUST 14-36H

Horizontal Well Pad

SW¼ SW¼ SECTION 36, TOWNSHIP 7 NORTH, RANGE 61 WEST OF THE 6TH PRINCIPAL MERIDIAN



For access to FRANK TRUST 14-36H; From the Junction of County Road 93 and County Road 74, follow County Road 74 east for approximately 1.1 miles. The proposed access road will be on the north side of County Road 74.

Legend



Proposed Well



Access Road

Reference Location

** All Measurements are Made from
Reference Well
FRANK TRUST 14-36H (NAD83) **
LAT: 40.524943° LONG: -104.165108°
Elevation: 4797 Feet



Use our resources to find yours!
www.petro-fs.com
(303) 928-7128

Field Date: 11/16/2010
Drafting Date: 11/21/2010
Drafter: DMM
Checked By: BHF

Data Sources:
- Topo courtesy of USGS

Prepared for:

**Petroleum
Development Corporation**