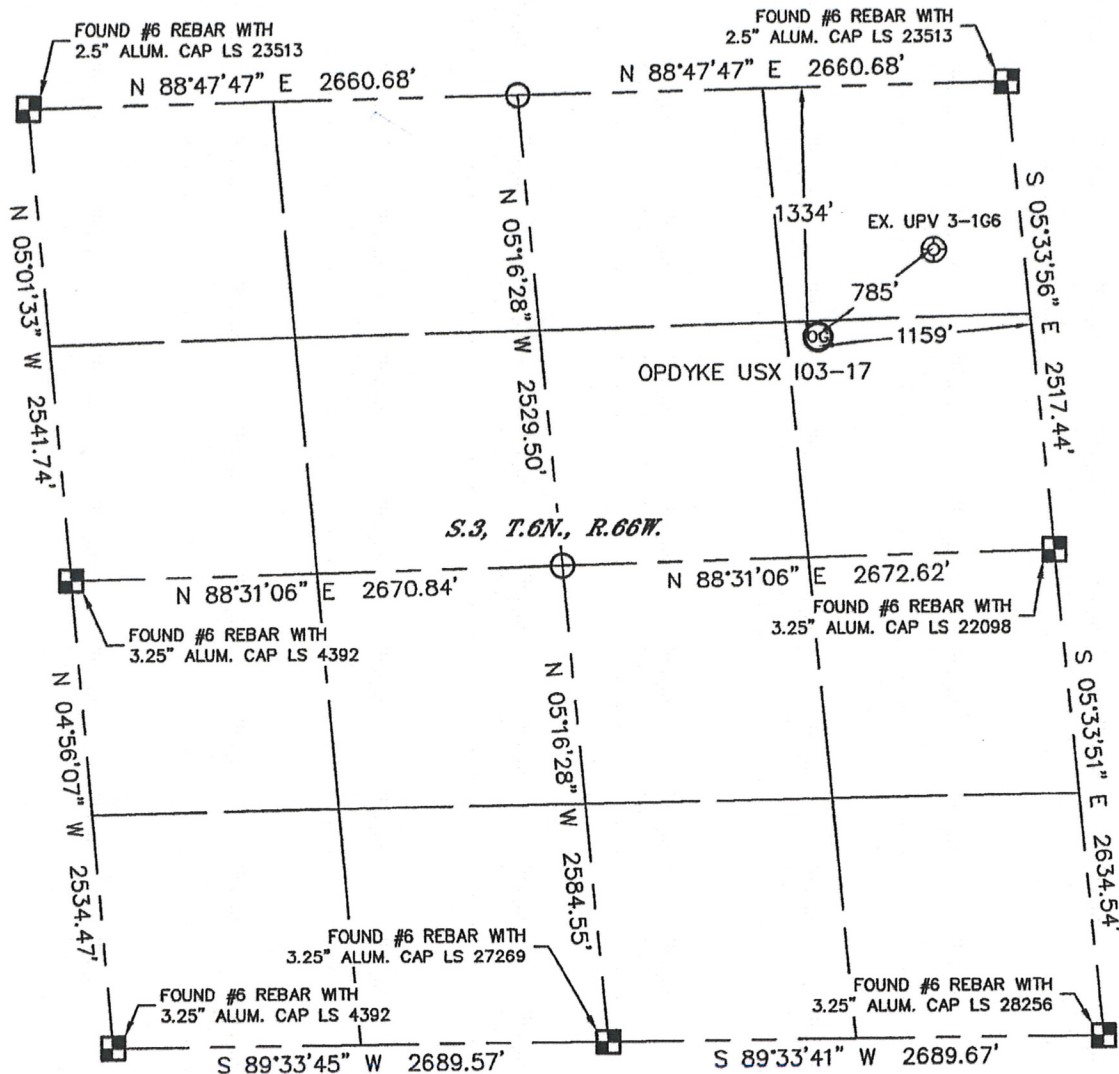


# WELL LOCATION CERTIFICATE

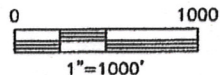
THIS MAP DOES NOT REPRESENT A BOUNDARY SURVEY

SECTION: 3  
TOWNSHIP: 6N  
RANGE: 66W



In accordance with a request from Joe Johnson with Noble Energy Inc., Lat40°, LLC has determined the surface location of the OPDYKE USX 103-17 to be 1334' from the NORTH line and 1159' from the EAST line as measured at right angles from the section lines of Section 3, Township 6 North, Range 66 West of the Sixth Principal Meridian, County of Weld, State of Colorado.

I hereby state that this Well Location Certificate was prepared by me, or under my direct supervision, that the fieldwork was completed on 12/15/10, for and on behalf of Noble Energy Inc.. That this is not a Land Survey Plat or an Improvement Survey Plat, and that it is not to be relied upon for establishment of fence, building, or other future improvement lines.



## NOTE:

- 1) Bearings shown are Grid Bearings of the Colorado State Plane Coordinate System, North Zone, North American Datum 1983/2007. The lineal dimensions as contained herein are based upon the "U.S. Survey Foot."
- 2) Ground elevations are based on an observed GPS elevation (NAVD 1988 DATUM).
- 3) NEAREST EXISTING WELL: UPV 3-1G6, 785'
- 4) IMPROVEMENTS: See LOCATION DRAWING for all visible improvements within 400' of disturbed area.
- 5) SURFACE USE: CROP FIELD
- 6) INSTRUMENT OPERATOR: BRIAN BRINKMAN

## SURFACE LOCATION

LATITUDE: 40.52049°N  
LONGITUDE: 104.75951°W  
PDOP: 1.4  
ELEV: 4926'  
1/4, 1/4: SE1/4NE1/4  
NEAREST PROPERTY LINE: 1080' NORTH



## NOTE

According to Colorado law, you must commence any legal action based upon any defect in this W.L.C. within three years after you discover such defect. In no event, may any action based upon any defect in this survey be commenced more than ten years after the date of the certificate shown hereon. (13-80-105 C.R.S.)

## LEGEND

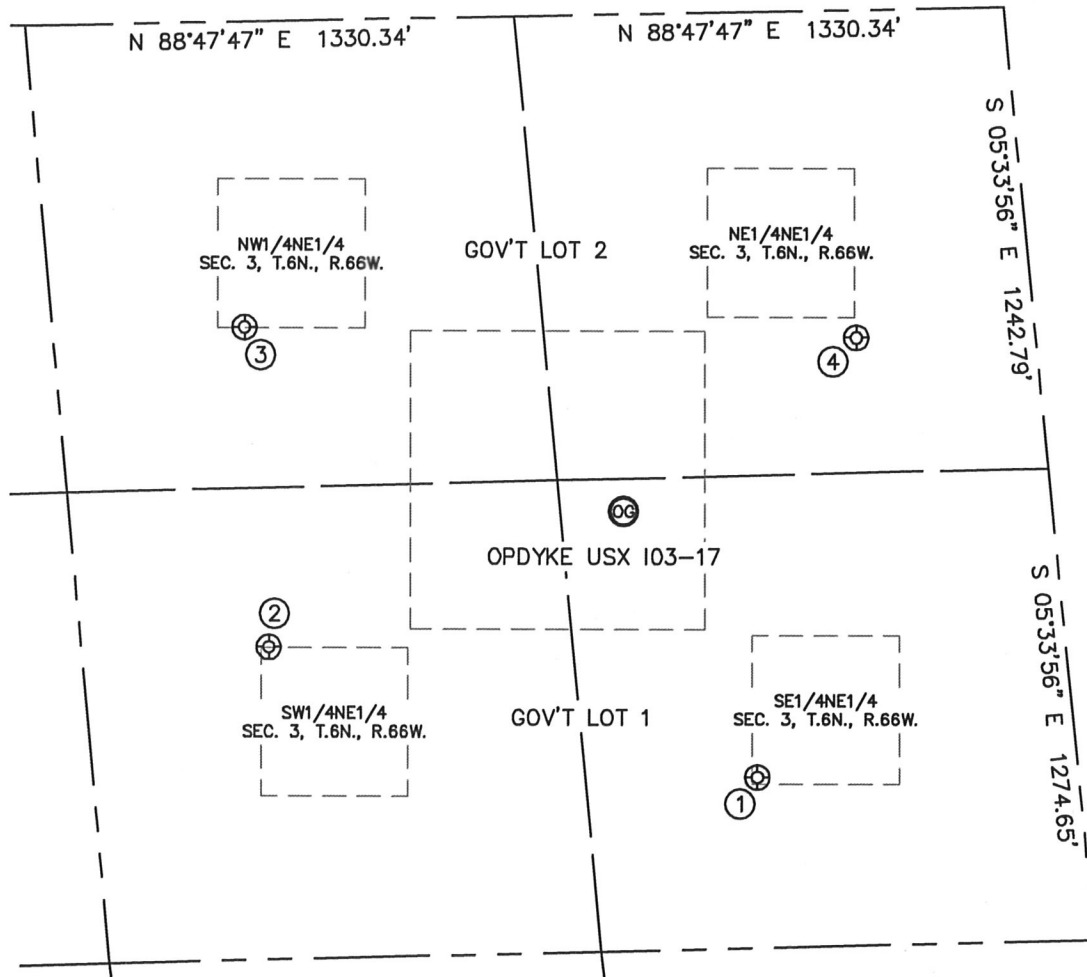
- = ALIQUOT MONUMENT AS DESCRIBED
- = CALCULATED POSITION

Brian T. Brinkman—On behalf of Lat40°, LLC  
Colorado Licensed Professional  
Land Surveyor No. 38175 PROJECT#: 2010175

# SITE SKETCH

OPDYKE USX 103-17

SECTION: 3  
TOWNSHIP: 6N  
RANGE: 66W



①  
OPDYKE 42-3  
SE1/4NE1/4  
2056' FNL  
868' FEL  
LAT-40.51852°N  
LONG-104.75823°W  
PDOP: 2.3  
ELEV: 4921'

②  
OPDYKE 32-3  
SW1/4NE1/4  
1680' FNL  
2155' FEL  
LAT-40.51950°N  
LONG-104.76299°W  
PDOP: 1.7  
ELEV: 4917'

③  
OPDYKE 31-3  
NW1/4NE1/4  
820' FNL  
2138' FEL  
LAT-40.52186°N  
LONG-104.76320°W  
PDOP: 2.4  
ELEV: 4919'

④  
UPV 3-1G6  
NE1/4NE1/4  
880' FNL  
486' FEL  
LAT-40.52176°N  
LONG-104.75723°W  
PDOP: 1.8  
ELEV: 4909'

