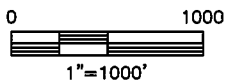
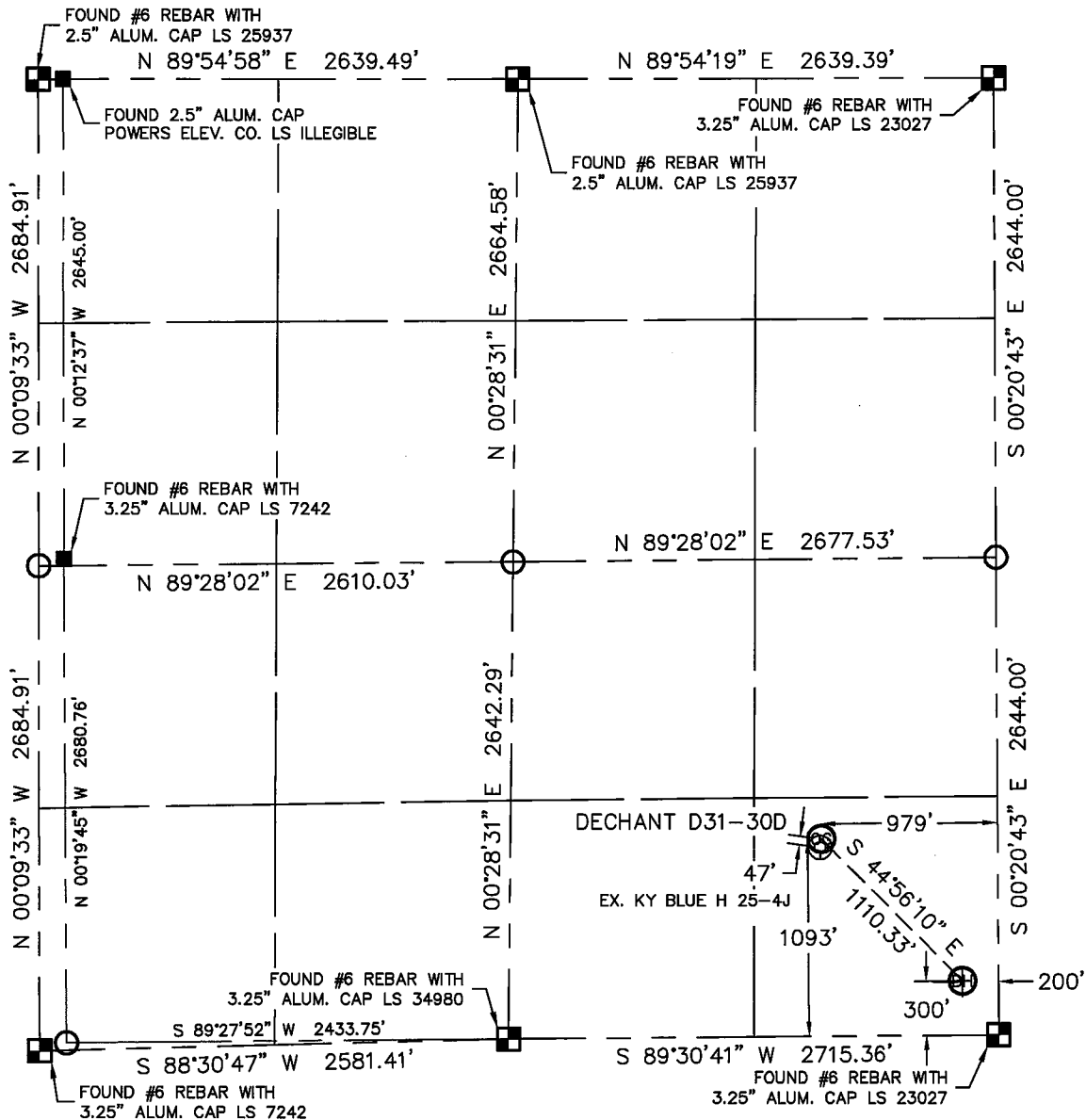


# WELL LOCATION CERTIFICATE

THIS MAP DOES NOT REPRESENT A BOUNDARY SURVEY

SECTION: 25  
TOWNSHIP: 3N  
RANGE: 65W



In accordance with a request from CJ PIETRI with Noble Energy Inc.

Lat40°, LLC has determined the surface location of the DECHANT D31-30D to be 1093' from the SOUTH line and 979' from the EAST line and the bottom hole to be 300' from the SOUTH line and 200' from the EAST line as measured at right angles from the section lines of Section 25, Township 3 North, Range 65 West of the Sixth Principal Meridian, County of Weld, State of Colorado.

I hereby state that this Well Location Certificate was prepared by me, or under my direct supervision, that the fieldwork was completed on 11/9/10, for and on behalf of Noble Energy Inc. That this is not a Land Survey Plat or an Improvement Survey Plat, and that it is not to be relied upon for establishment of fence, building, or other future improvement lines.

## NOTE:

- 1) Bearings shown are Grid Bearings of the Colorado State Plane Coordinate System, North Zone, North American Datum 1983/2007. The lineal dimensions as contained herein are based upon the "U.S. Survey Foot."
- 2) Ground elevations are based on an observed GPS elevation (NAVD 1988 DATUM).
- 3) NEAREST EXISTING WELL: KY BLUE H 25-4J 47'
- 4) IMPROVEMENTS: See LOCATION DRAWING for all visible improvements within 400' of disturbed area.
- 5) SURFACE USE: IRRIGATED CROP
- 6) INSTRUMENT OPERATOR: BRIAN BRINKMAN

SURFACE LOCATION  
LATITUDE: 40.19188°N  
LONGITUDE: 104.60630°W  
PDOP: 2.1  
ELEV: 4799'  
1/4, 1/4: SE1/4SE1/4  
NEAREST PROPERTY LINE: 979' EAST

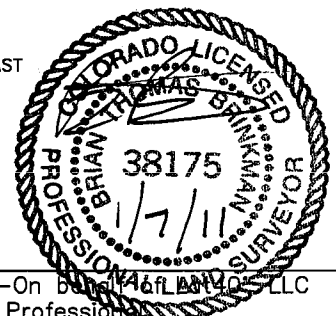
BOTTOM HOLE  
LATITUDE: 40.18970°N  
LONGITUDE: 104.60353°W

## NOTE

According to Colorado law, you must commence any legal action based upon any defect in this W.L.C. within three years after you discover such defect. In no event, may any action based upon any defect in this survey be commenced more than ten years after the date of the certificate shown hereon. (13-80-105 C.R.S.)

## LEGEND

- = ALIQUOT MONUMENT AS DESCRIBED  
 = CALCULATED POSITION



Brian T. Brinkman—On behalf of Lat40°, LLC  
Colorado Licensed Professional  
Land Surveyor No. 38175 PROJECT#: 2010143

Lat40°, LLC

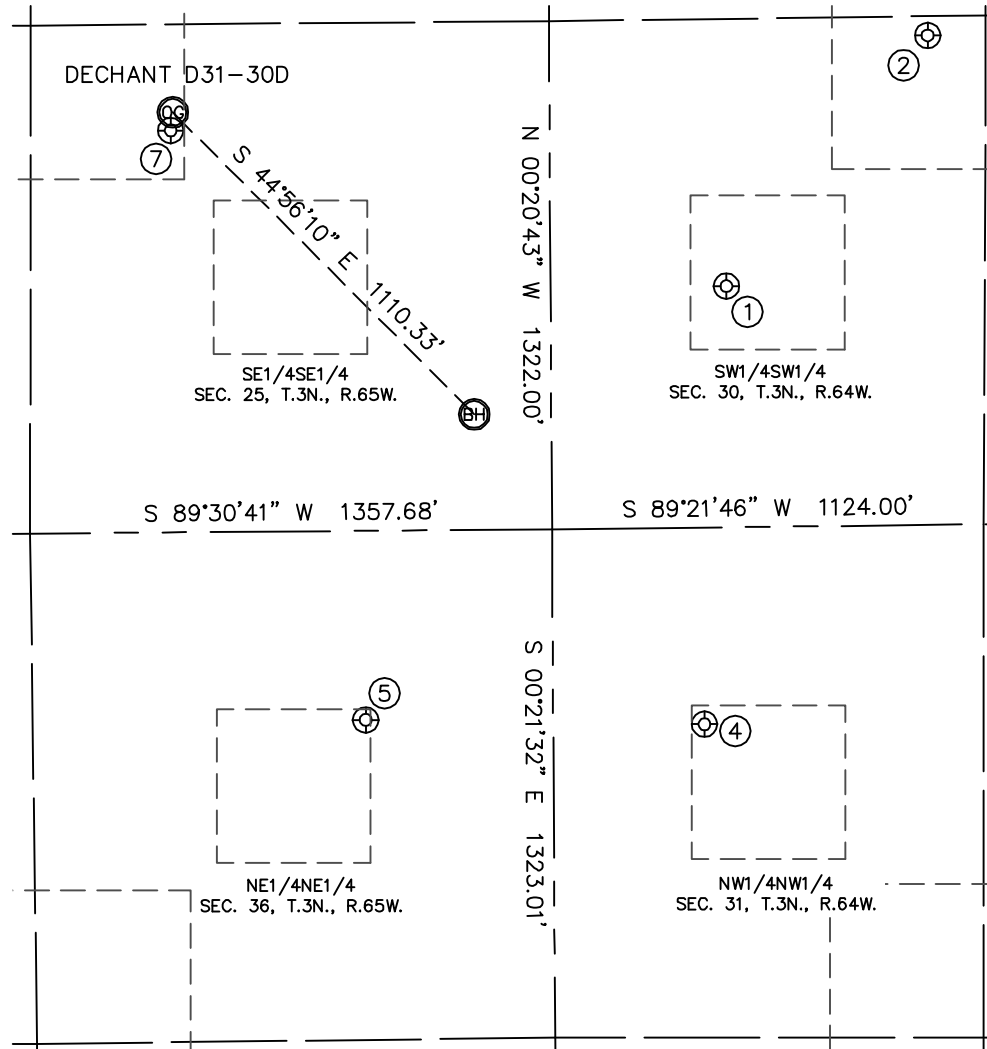
1635 Foxtrail Drive, Suite 325

Loveland, CO 80538

# SITE SKETCH

DECHANT D31-30D

SECTION: 25  
TOWNSHIP: 3N  
RANGE: 65W



①

HANSON D 30-13  
SW1/4SW1/4  
627' FSL  
458' FWL  
LAT-40.19060°N  
LONG-104.60117°W  
PDOP: 1.4  
ELEV: 4801'

②

LESLIE E. HANSON  
GAS UNIT 1  
SW1/4SW1/4  
1274' FSL  
985' FWL  
LAT-40.19238°N  
LONG-104.59927°W  
PDOP: 1.4  
ELEV: 4798'

④

RIVA RED D 31-4  
NW1/4NW1/4  
512' FNL  
394' FWL  
LAT-40.18748°N  
LONG-104.60141°W  
PDOP: 1.6  
ELEV: 4805'

⑤

HSR-DECHANT STATE 1-36  
NE1/4NE1/4  
492' FNL  
488' FEL  
LAT-40.18753°N  
LONG-104.60457°W  
PDOP: 1.6  
ELEV: 4805'

⑦

KY BLUE H 25-4J  
SE1/4SE1/4  
1046' FSL  
986' FEL  
LAT-40.19175°N  
LONG-104.60633°W  
PDOP: 2.9  
ELEV: 4800'

