
OXY GRAND JUNCTION EBUSINESS

**SHELL 797-03-38
GRAND VALLEY
Garfield County , Colorado**

Cement Surface Casing
14-Dec-2010

Job Site Documents

The Road to Excellence Starts with Safety

Sold To #: 344034	Ship To #: 344034	Quote #:	Sales Order #: 7824648
Customer: OXY GRAND JUNCTION EBUSINESS		Customer Rep: LONG, CODY	
Well Name: SHELL		Well #: 797-03-38	API/UWI #: 05-045-17887
Field: GRAND VALLEY	City (SAP): BROWNFIELD	County/Parish: Garfield	State: Colorado
Lat: N 39.478 deg. OR N 39 deg. 28 min. 42.082 secs.		Long: W 108.202 deg. OR W -109 deg. 47 min. 52.271 secs.	
Contractor: H&P Drilling		Rig/Platform Name/Num: M-37	
Job Purpose: Cement Surface Casing			
Well Type: Development Well		Job Type: Cement Surface Casing	
Sales Person: DUNNING, DUSTIN		Srv Supervisor: SMITH, CHRISTOPHER	MBU ID Emp #: 452619

Job Personnel

HES Emp Name	Exp Hrs	Emp #	HES Emp Name	Exp Hrs	Emp #	HES Emp Name	Exp Hrs	Emp #
BATH, KYLE Thomas	4.5	477632	BRENNECKE, ANDREW Bailey	4.5	486345	LEIST, JAMES R	4.5	362787
SMITH, CHRISTOPHER Scott	4.5	452619						

Equipment

HES Unit #	Distance-1 way	HES Unit #	Distance-1 way	HES Unit #	Distance-1 way	HES Unit #	Distance-1 way
10046360	40 mile	10784053	40 mile	10872429	40 mile	11259882	40 mile
11360883	40 mile						

Job Hours

Date	On Location Hours	Operating Hours	Date	On Location Hours	Operating Hours	Date	On Location Hours	Operating Hours
12.13.2010	5	0	12.14.2010	5	4.5			
TOTAL								

Total is the sum of each column separately

Job				Job Times			
Formation Name	Formation Depth (MD)	Top	Bottom	Called Out	Date	Time	Time Zone
Form Type			BHST	On Location	13 - Dec - 2010	14:00	MST
Job depth MD	1024. ft		Job Depth TVD	Job Started	13 - Dec - 2010	19:00	MST
Water Depth			Wk Ht Above Floor	Job Started	14 - Dec - 2010	02:13	MST
Perforation Depth (MD)	From		To	Job Completed	14 - Dec - 2010	03:50	MST
				Departed Loc	14 - Dec - 2010	05:00	MST

Well Data

Description	New / Used	Max pressure psig	Size in	ID in	Weight lbm/ft	Thread	Grade	Top MD ft	Bottom MD ft	Top TVD ft	Bottom TVD ft
-------------	------------	-------------------	---------	-------	---------------	--------	-------	-----------	--------------	------------	---------------

Sales/Rental/3rd Party (HES)

Description	Qty	Qty uom	Depth	Supplier
PLUG,CMTG, TOP, 9 5/8, HWE, 8.16 MIN/9.06 MA	1	EA		
KIT, HALL WELD-A	5	EA		
R/A DENSOMETER W/CHART RECORDER, /JOB, ZI	1	JOB		
PORT. DATA ACQUIS. W/OPTICEM RT W/HES	1	EA		
ADC (AUTO DENSITY CTRL) SYS, /JOB, ZI	1	JOB		

Tools and Accessories

Type	Size	Qty	Make	Depth	Type	Size	Qty	Make	Depth	Type	Size	Qty	Make
Guide Shoe					Packer					Top Plug	9.625	1	HES
Float Shoe					Bridge Plug					Bottom Plug			
Float Collar					Retainer					SSR plug set			
Insert Float										Plug Container	9.625	1	HES
Stage Tool										Centralizers			

Miscellaneous Materials

Gelling Agt	Conc	Surfactant	Conc	Acid Type	Qty	Conc	%
-------------	------	------------	------	-----------	-----	------	---

Treatment Fld		Conc		Inhibitor		Conc		Sand Type		Size		Qty	
Fluid Data													
Stage/Plug #: 1													
Fluid #	Stage Type	Fluid Name			Qty	Qty uom	Mixing Density lbm/gal	Yield ft ³ /sk	Mix Fluid Gal/sk	Rate bbl/min	Total Mix Fluid Gal/sk		
1	Water Spacer				20.00	bbl	8.33	.0	.0	.0			
2	Gel Water Spacer				20.00	bbl	.	.0	.0	.0			
3	Water Spacer				20.00	bbl	.	.0	.0	.0			
4	Lead Cement	VERSACEM (TM) SYSTEM (452010)			146.0	sacks	12.3	2.38	13.76		13.76		
		13.76 Gal			FRESH WATER								
5	Tail Cement	SWIFTCEM (TM) SYSTEM (452990)			87.0	sacks	14.2	1.43	6.85		6.85		
		6.85 Gal			FRESH WATER								
6	Displacement				75.00	bbl	.	.0	.0	.0			
Calculated Values				Pressures				Volumes					
Displacement	74.5	Shut In: Instant			Lost Returns			Cement Slurry		84.1	Pad		
Top Of Cement	SURFACE	5 Min			Cement Returns		12	Actual Displacement		74.9	Treatment		
Frac Gradient		15 Min			Spacers		60	Load and Breakdown			Total Job		
Rates													
Circulating		Mixing		5	Displacement		5	Avg. Job			5		
Cement Left In Pipe	Amount	55 ft	Reason	Shoe Joint									
Frac Ring # 1 @	ID	Frac ring # 2 @	ID	Frac Ring # 3 @	ID	Frac Ring # 4 @	ID						
The Information Stated Herein Is Correct				Customer Representative Signature									

The Road to Excellence Starts with Safety

Sold To #: 344034		Ship To #: 344034		Quote #:		Sales Order #: 7824648	
Customer: OXY GRAND JUNCTION EBUSINESS				Customer Rep: LONG, CODY			
Well Name: SHELL		Well #: 797-03-38		API/UWI #: 05-045-17887			
Field: GRAND VALLEY		City (SAP): BROWNFIELD		County/Parish: Garfield		State: Colorado	
Legal Description:							
Lat: N 39.478 deg. OR N 39 deg. 28 min. 42.082 secs.				Long: W 108.202 deg. OR W -109 deg. 47 min. 52.271 secs.			
Contractor: H&P Drilling		Rig/Platform Name/Num: M-37					
Job Purpose: Cement Surface Casing				Ticket Amount:			
Well Type: Development Well		Job Type: Cement Surface Casing					
Sales Person: DUNNING, DUSTIN		Srv Supervisor: SMITH, CHRISTOPHER			MBU ID Emp #: 452619		

Activity Description	Date/Time	Cht #	Rate bbl/min	Volume bbl		Pressure psig		Comments
				Stage	Total	Tubing	Casing	
Call Out	12/13/2010 14:00							
Pre-Convoy Safety Meeting	12/13/2010 16:30							WITH ALL HES PERSONNEL
Crew Leave Yard	12/13/2010 17:40							
Arrive At Loc	12/13/2010 19:00							
Assessment Of Location Safety Meeting	12/13/2010 19:15							WITH ALL HES PERSONNEL
Pre-Rig Up Safety Meeting	12/14/2010 01:45							WITH ALL HES PERSONNEL
Rig-Up Completed	12/14/2010 02:00							RIG CIRCULATED FOR ONE HOUR AT 370 GPM PRIOR TO CEMENT JOB.
Pre-Job Safety Meeting	12/14/2010 02:10							WITH ALL ON LOCATION PERSONNEL
Start Job	12/14/2010 02:13							TD:1050 TP:1024 SJ:55 CSG:9 5/8 36# MUD:9.1 GOOD CIRULATION THROUGHOUT JOB, NO PIPE MOVEMENT DURING JOB
Pressure Test	12/14/2010 02:14		2	2			3500.0	PRESSURE TEST LINES TO 3500 PSI
Pump Spacer 1	12/14/2010 02:17		5	20			130.0	FRESH WATER
Pump Spacer 2	12/14/2010 02:22		5	20			175.0	GEL WATER
Pump Spacer 1	12/14/2010 02:26		5	20			246.0	FRESH WATER

Sold To #: 344034

Ship To #: 344034

Quote #:

Sales Order #:

7824648

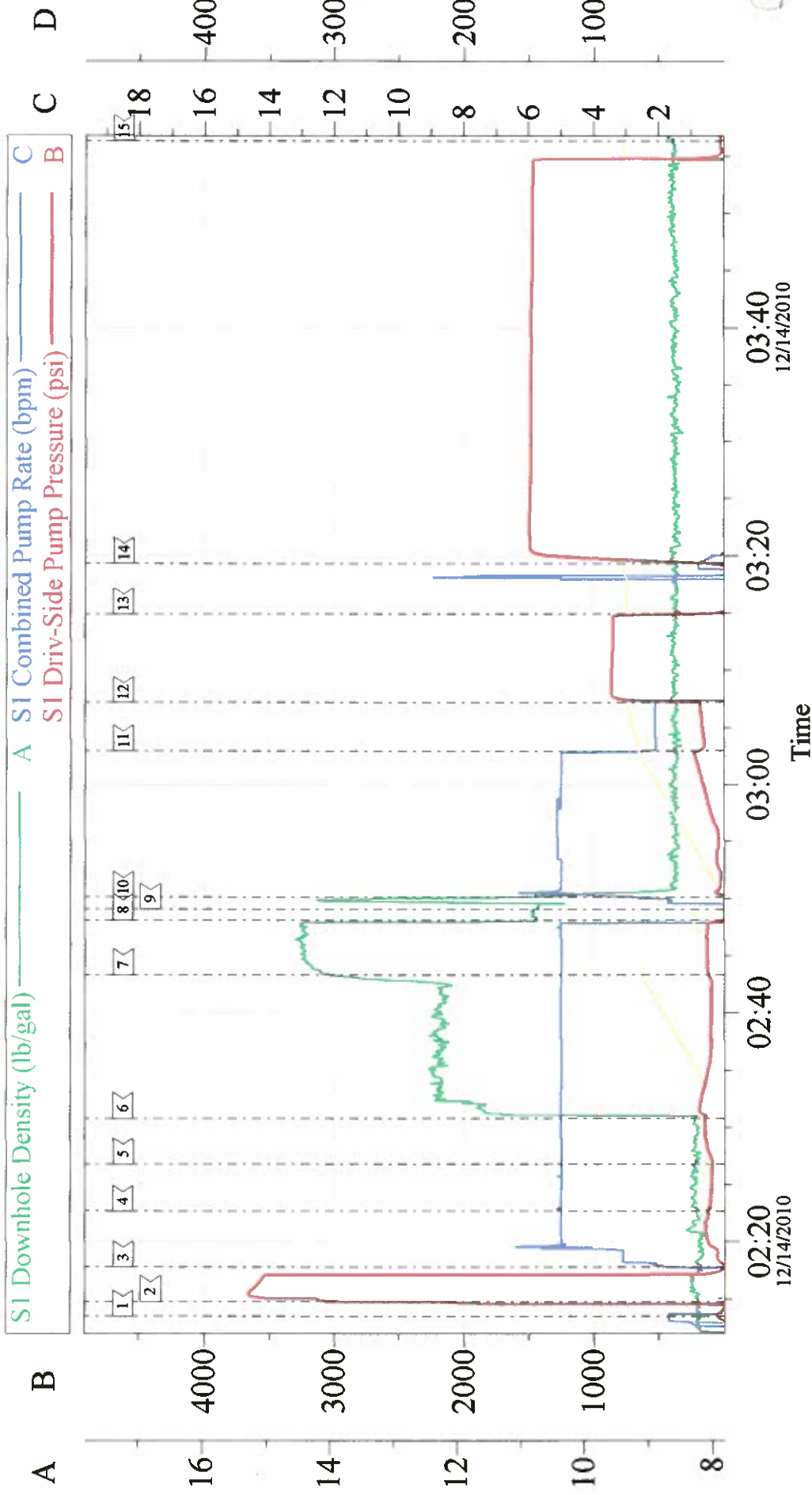
SUMMIT Version: 7.20.130

Tuesdav. December 14. 2010 04:40:00

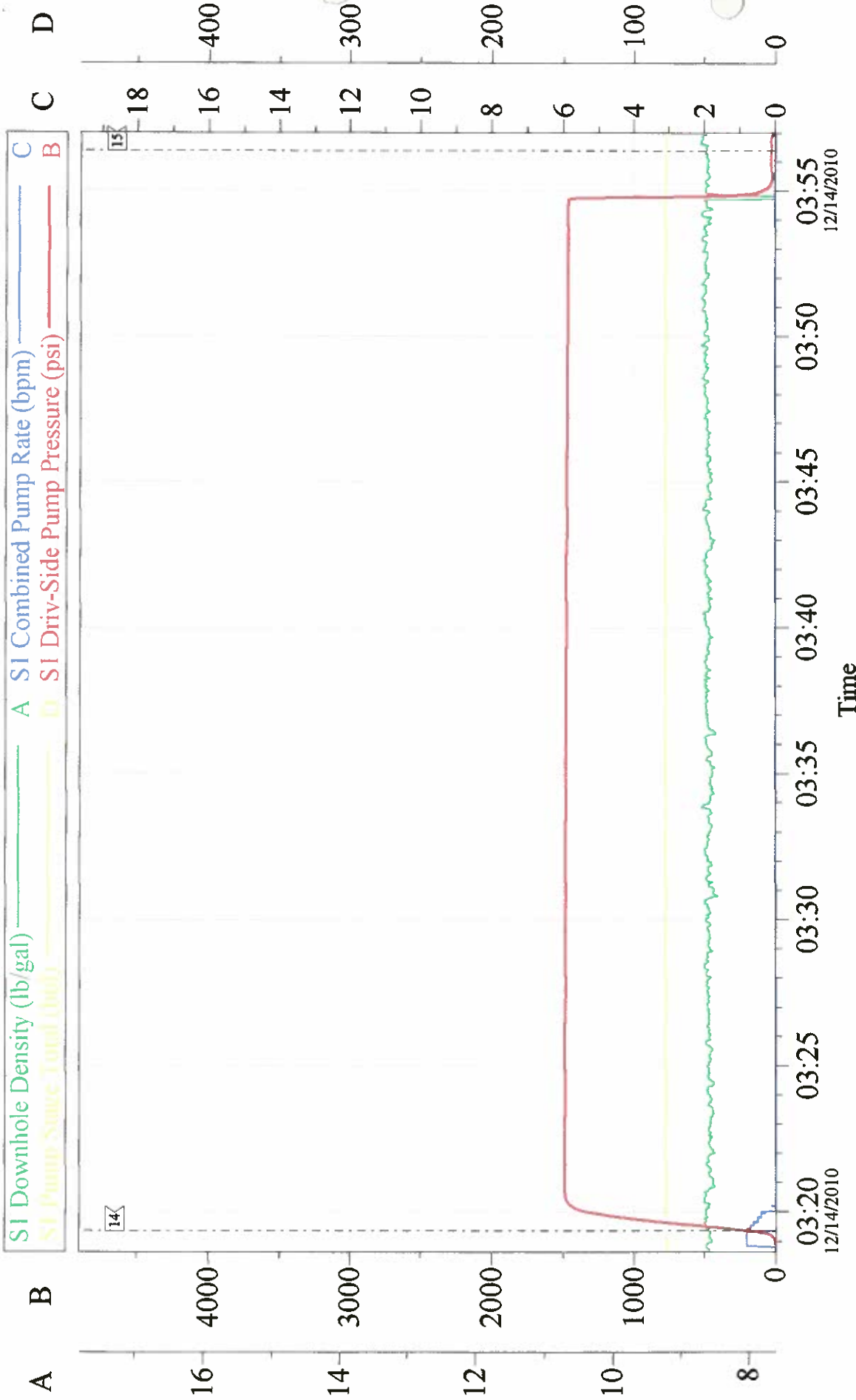
Cementing Job Log

Activity Description	Date/Time	Cht #	Rate bbl/ min	Volume bbl		Pressure psig		Comments
				Stage	Total	Tubing	Casing	
Pump Lead Cement	12/14/2010 02:30		5	61.9			242.0	146 SKS, 12.3 PPG, 2.38 YLD, 13.76 GAL/SK
Pump Tail Cement	12/14/2010 02:43		5	22.2			330.0	87 SKS, 14.2 PPG, 1.43 YLD, 6.85 GAL/SK
Shutdown	12/14/2010 02:48							
Drop Top Plug	12/14/2010 02:49							AWAY
Pump Displacement	12/14/2010 02:50		5	74.9			365.0	FRESH, 12 BBL OF CEMENT TO SURFACE
Slow Rate	12/14/2010 03:02		2	64.9			325.0	TO BUMP PLUG
Bump Plug	12/14/2010 03:07		2	74.9			350.0	PLUG BUMPED
Check Floats	12/14/2010 03:14						1050. 0	THE FLOATS ARE HOLDING
Pressure Test	12/14/2010 03:20						1500. 0	CSG PRESSURE TEST. HOLD 1500 PSI FOR 30 MIN.
End Job	12/14/2010 03:50							
Pre-Rig Down Safety Meeting	12/14/2010 04:00							WITH ALL HES PERSONNEL
Rig-Down Completed	12/14/2010 04:30							
Pre-Convoy Safety Meeting	12/14/2010 04:40							WITH ALL HES PERSONNEL
Crew Leave Location	12/14/2010 05:00							
Comment	12/14/2010 05:01							THANKYOU FOR USING HALLIBURTON CEMENT, CHRIS SMITH AND CREW

OXY **9 5/8 SURFACE CASEING**



OXY CASEING PRESSURE TEST



Local Event Log
☒ 14 CASEING TEST 03:19:22 ☒ 15 END JOB 03:56:22

Customer: OXY	Job Date: 14-Dec-2010	Sales Order #: 7824648
Well Description: SHELL 797-03-38	Job Type: SURFACE	ADC Used: YES
Company Rep:	Cement Supervisor: CHRIS SMITH	Elite #: 7/I. LEIST