

PETROLEUM DEVELOPMENT CORP Weld County CO

Well Name: **Coors Energy 14-25H**

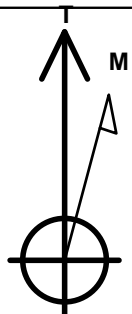
Surface Location: Coors Energy 14-25H Pad Sec.25-T3N-R64W
North American Datum 1983 , US State Plane 1983 , Colorado Northern Zone

Ground Elevation: 4825.0

+N/-S	+E/-W	Northing	Easting	Latitude	Longitude	Slot
0.0	0.0	1314575.95	3276875.64	40° 11' 33.576 N	104° 30' 31.968 W	
Original Well Elev WELL @ 4839.0ft (Original Well Elev)						

WELLBORE TARGET DETAILS

Name	TVD	+N/-S	+E/-W	Shape
HARDLINE BHL 460'FEL	1.0	430.2	4719.9	Polygon
HARDLINE SHL 460'FWL	1.0	400.0	369.0	Polygon
BHL 1320'FSL, 501'FEL	6649.0	30.2	4678.9	Point



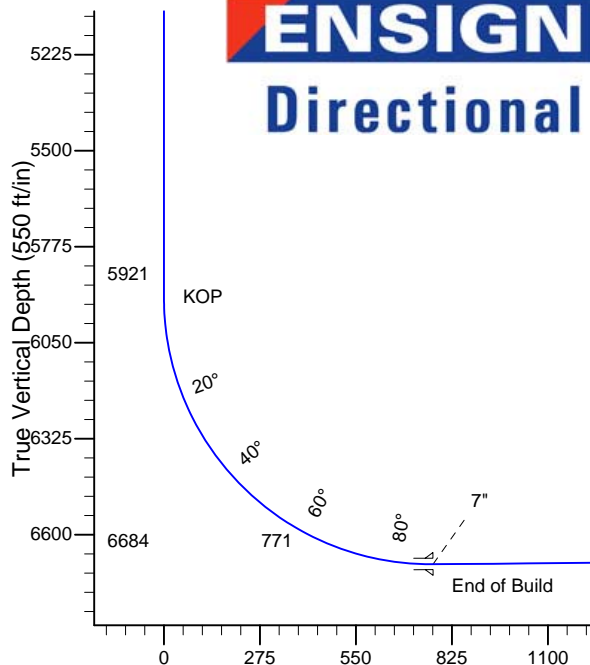
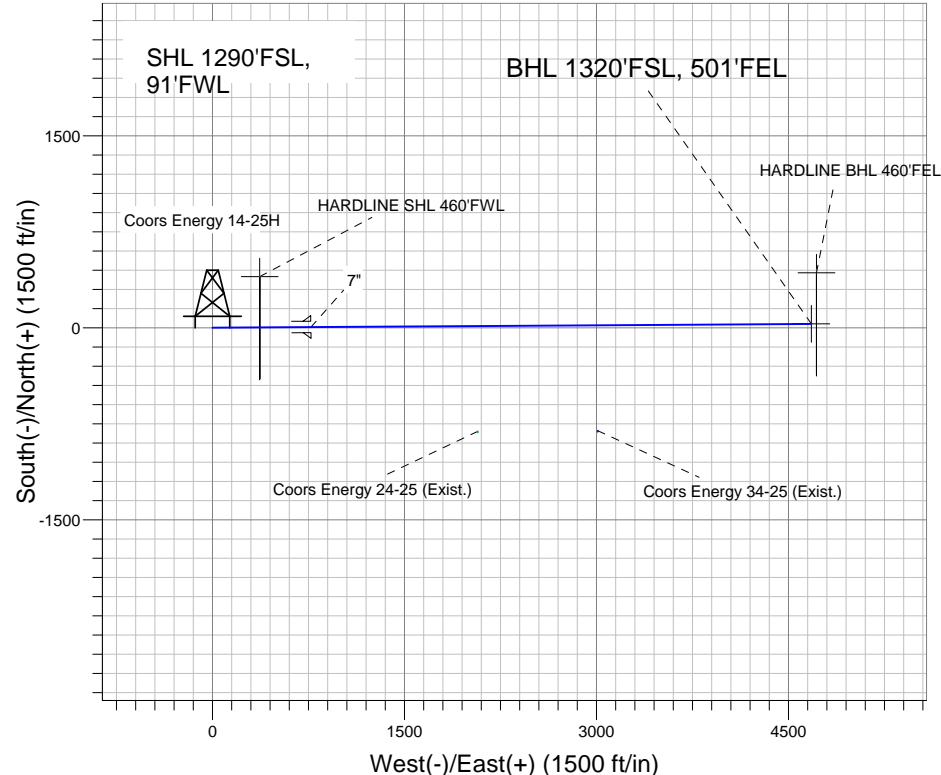
Azimuths to True North
Magnetic North: 8.76°

Magnetic Field
Strength: 53090.9nT
Dip Angle: 66.94°
Date: 1/25/2011
Model: IGRF2010

Coors Energy 14-25H Pad Sec.25-T3N-R64W
Coors Energy 14-25H
Plan #1 (1-25-11)
18:16, February 03 2011

ANNOTATIONS

TVD	MD	Annotation
5920.6	5920.6	KOP
6684.5	7127.5	End of Build



SECTION DETAILS

Sec	MD	Inc	Azi	TVD	+N/-S	+E/-W	DLeg	TFace	VSec	Target
1	0.0	0.00	0.00	0.0	0.0	0.0	0.00	0.00	0.0	
2	5920.6	0.00	0.00	5920.6	0.0	0.0	0.00	0.00	0.0	
3	7127.5	90.52	89.63	6684.5	5.0	770.9	7.50	89.63	770.9	
4	11035.8	90.52	89.63	6649.0	30.2	4678.9	0.00	0.00	4679.0	BHL 1320'FSL, 501'FEL

BHL 1320'FSL, 501'FEL

Vertical Section at 89.63° (550 ft/in)