

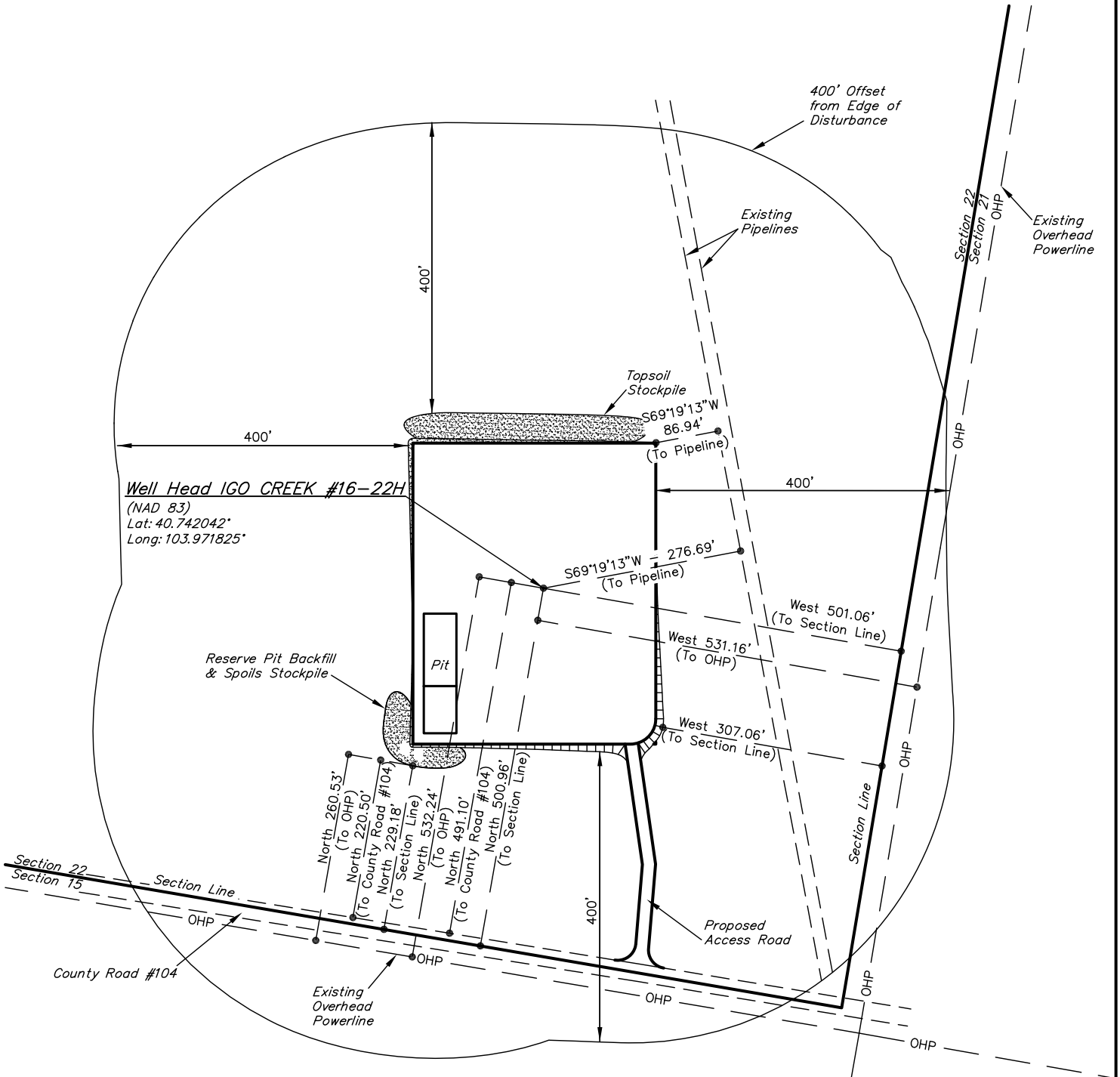
EOG RESOURCES, INC.

ADDENDUM TO LEGAL PLAT FOR

IGO CREEK #16-22H
SECTION 22, T9N, R59W, 6th P.M.
501' FNL 501' FWL



SCALE: 1" = 200'
DATE: 12-21-10
DRAWN BY: M.D.



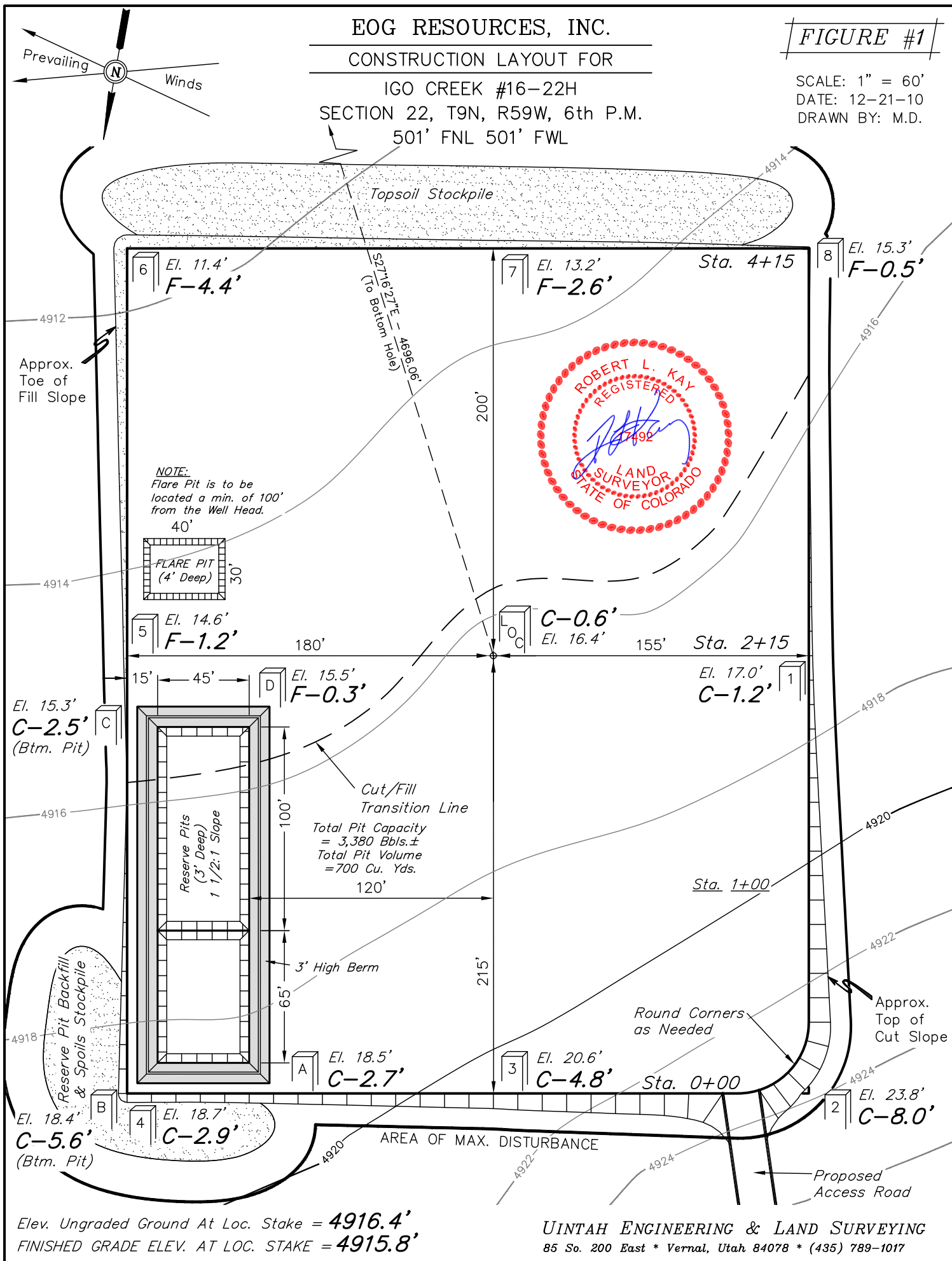
EOG RESOURCES, INC.

CONSTRUCTION LAYOUT FOR

IGO CREEK #16-22H
SECTION 22, T9N, R59W, 6th P.M.
501' FNL 501' FWL

FIGURE #1

SCALE: 1" = 60'
DATE: 12-21-10
DRAWN BY: M.D.



Elev. Ungraded Ground At Loc. Stake = 4916.4'
FINISHED GRADE ELEV. AT LOC. STAKE = 4915.8'

UINTAH ENGINEERING & LAND SURVEYING
85 So. 200 East * Vernal, Utah 84078 * (435) 789-1017

EOG RESOURCES, INC.

CONSTRUCTION LAYOUT CROSS SECTION FOR

IGO CREEK #16-22H

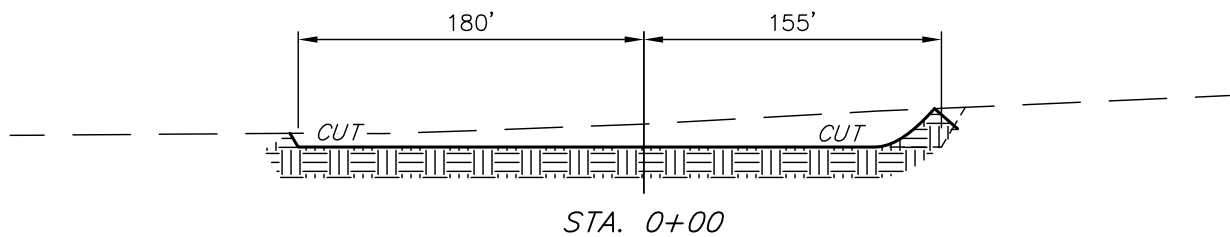
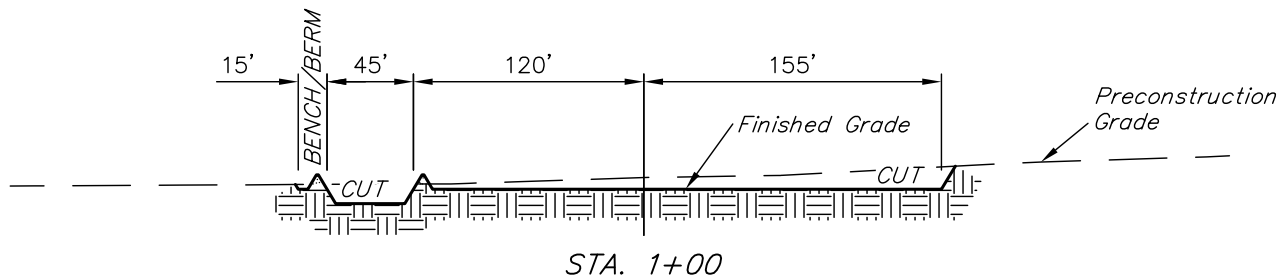
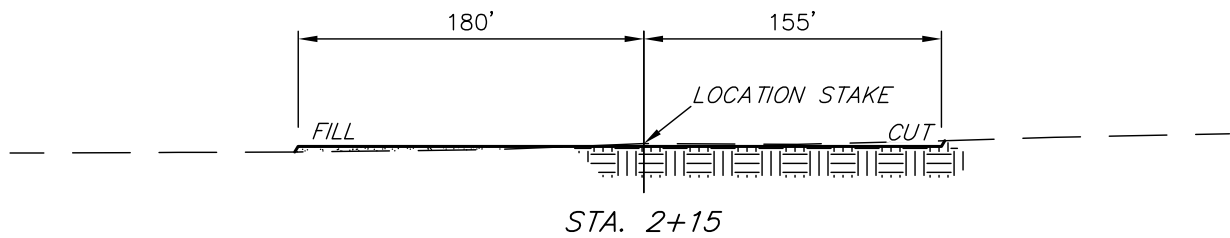
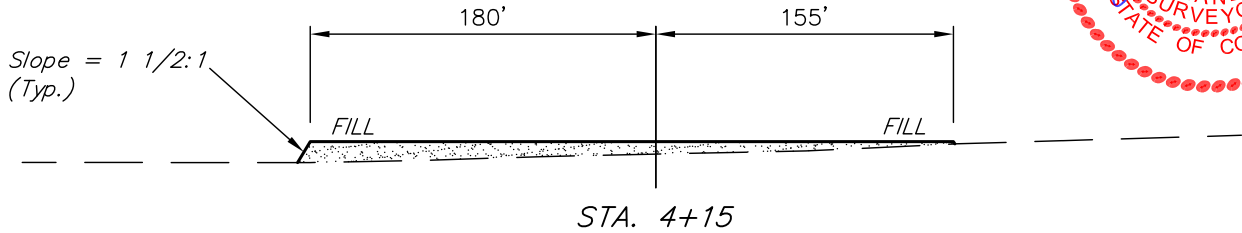
SECTION 22, T9N, R59W, 6th P.M.

501' FNL 501' FWL

FIGURE #2

X-Section
Scale
1" = 100'

DATE: 12-21-10
DRAWN BY: M.D.



NOTE:

Topsoil should not be Stripped Below Finished Grade on Substructure Area.

APPROXIMATE ACREAGES
WELL SITE DISTURBANCE = ± 4.287 ACRES
ACCESS ROAD DISTURBANCE = ± 0.210 ACRES
TOTAL = ± 4.497 ACRES

* NOTE:
FILL QUANTITY INCLUDES 5% FOR COMPACTION

APPROXIMATE YARDAGES

(6") Topsoil Stripping = 2,740 Cu. Yds.
Remaining Location = 5,730 Cu. Yds.
TOTAL CUT = 8,470 CU.YDS.
FILL = 5,380 CU.YDS.

EXCESS MATERIAL = 3,090 Cu. Yds.
Topsoil & Pit Backfill = 3,090 Cu. Yds.
(1/2 Pit Vol.)
EXCESS UNBALANCE = 0 Cu. Yds.
(After Interim Rehabilitation)

UINTAH ENGINEERING & LAND SURVEYING
85 So. 200 East * Vernal, Utah 84078 * (435) 789-1017

TYPICAL RIG LAYOUT FOR

FIGURE #3



UINTAH ENGINEERING & LAND SURVEYING
85 So. 200 East * Vernal, Utah 84078 * (435) 789-1017

EOG RESOURCES, INC.

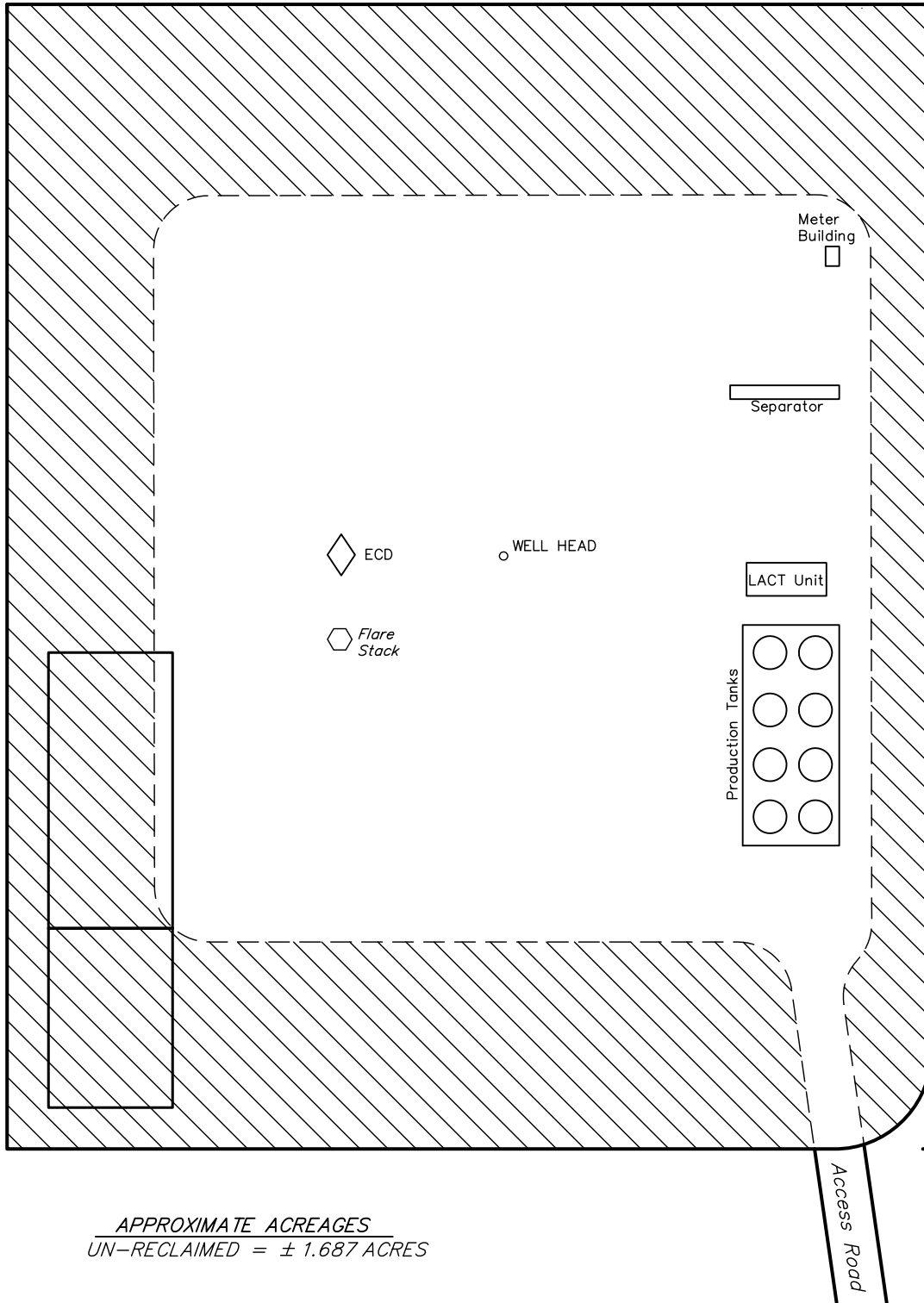
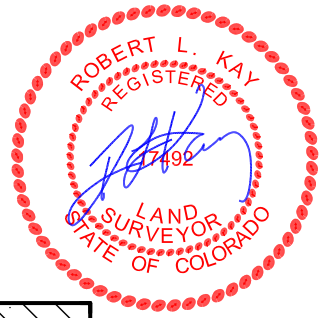
RECLAMATION DIAGRAM FOR

IGO CREEK #16-22H
SECTION 22, T9N, R59W, 6th P.M.
501' FNL 501' FWL

FIGURE #4



SCALE: 1" = 60'
DATE: 12-21-10
DRAWN BY: M.D.



APPROXIMATE ACREAGES
UN-RECLAIMED = ± 1.687 ACRES



RECLAIMED AREA

UINTAH ENGINEERING & LAND SURVEYING
85 So. 200 East * Vernal, Utah 84078 * (435) 789-1017

EOG RESOURCES, INC.

LOCATION DRAWING FOR

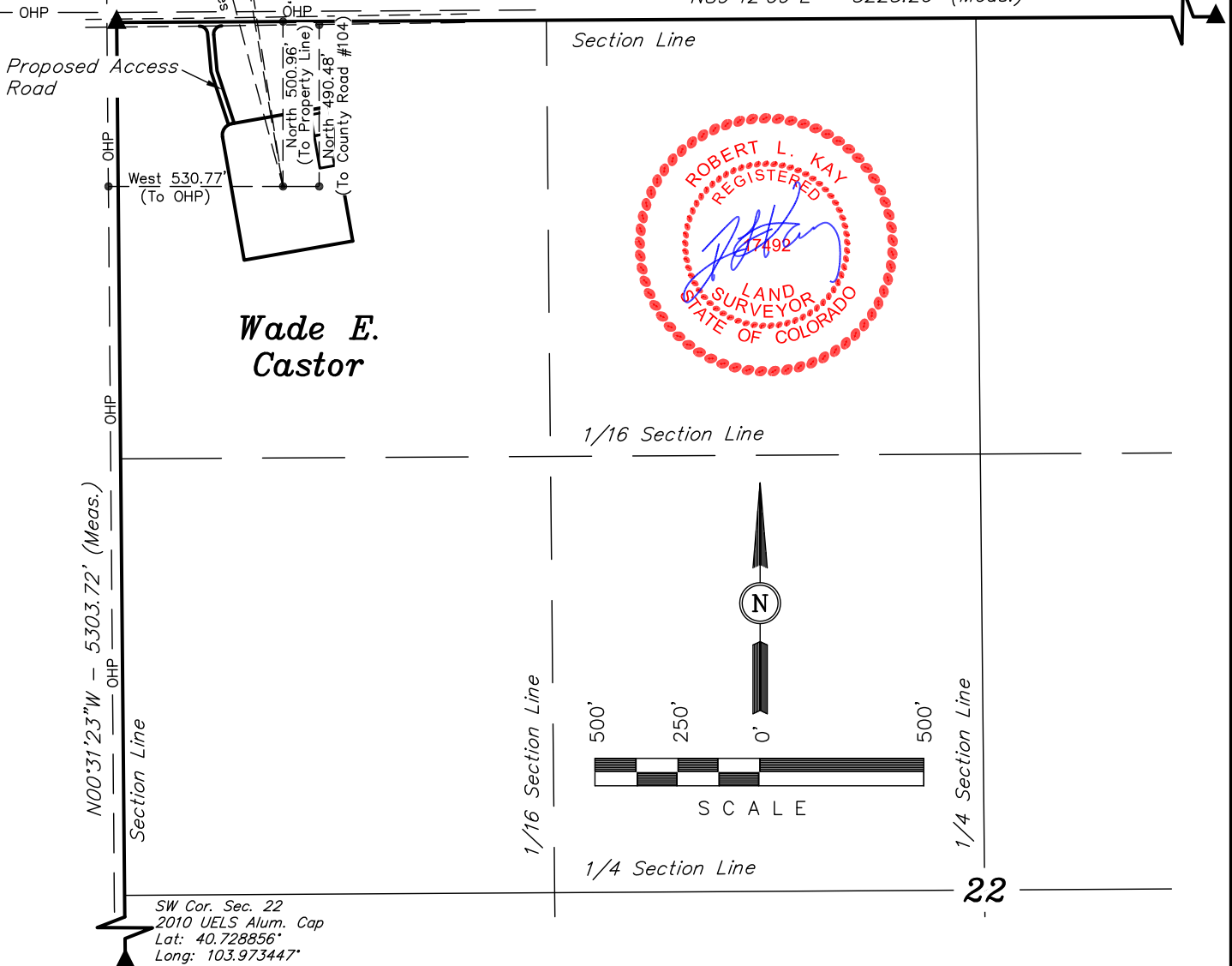
IGO CREEK #16-22H
SECTION 22, T9N, R59W, 6th P.M.
501' FNL 501' FWL

FIGURE #5

DATE: 12-21-10
DRAWN BY: M.D.

Private Alum. Cap.
LS #38044
Lat: 40.743408°
Long: 103.973650°

NE Cor. Sec. 22
Private Alum. Cap
LS #17492
Lat: 40.743503°
Long: 103.954806°



N00°31'23\"W - 5303.72' (Meas.)

Section Line

SW Cor. Sec. 22
2010 UELS Alum. Cap
Lat: 40.728856°
Long: 103.973447°

Wade E.
Castor

Section Line

N89°42'09\"E - 5223.26' (Meas.)



1/16 Section Line

1/16 Section Line

1/4 Section Line

1/4 Section Line

22

PLANT COMMUNITY

- ☐ DISTURBED GRASSLAND
- ☐ NATIVE GRASSLAND
- ☐ SHRUB LAND
- ☐ PLAINS RIPARIAN
- ☐ MOUNTAIN RIPARIAN
- ☐ FOREST LAND
- ☐ WETLANDS AQUATIC
- ☐ ALPINE
- ☐ OTHER (Describe): _____

CURRENT LAND USE

- CROP LAND: ☐ IRRIGATED ☐ DRY LAND ☐ IMPROVED PASTURE ☐ HAY MEADOW ☐ CRP
- NON-CROP LAND: ☐ RANGELAND ☐ TIMBER ☐ RECREATIONAL ☐ OTHER (Describe) _____
- SUBDIVIDED: ☐ INDUSTRIAL ☐ COMMERCIAL ☐ RESIDENTIAL _____

FUTURE LAND USE

- CROP LAND: ☐ IRRIGATED ☐ DRY LAND ☐ IMPROVED PASTURE ☐ HAY MEADOW ☐ CRP
- NON-CROP LAND: ☐ RANGELAND ☐ TIMBER ☐ RECREATIONAL ☐ OTHER (Describe) _____
- SUBDIVIDED: ☐ INDUSTRIAL ☐ COMMERCIAL ☐ RESIDENTIAL _____