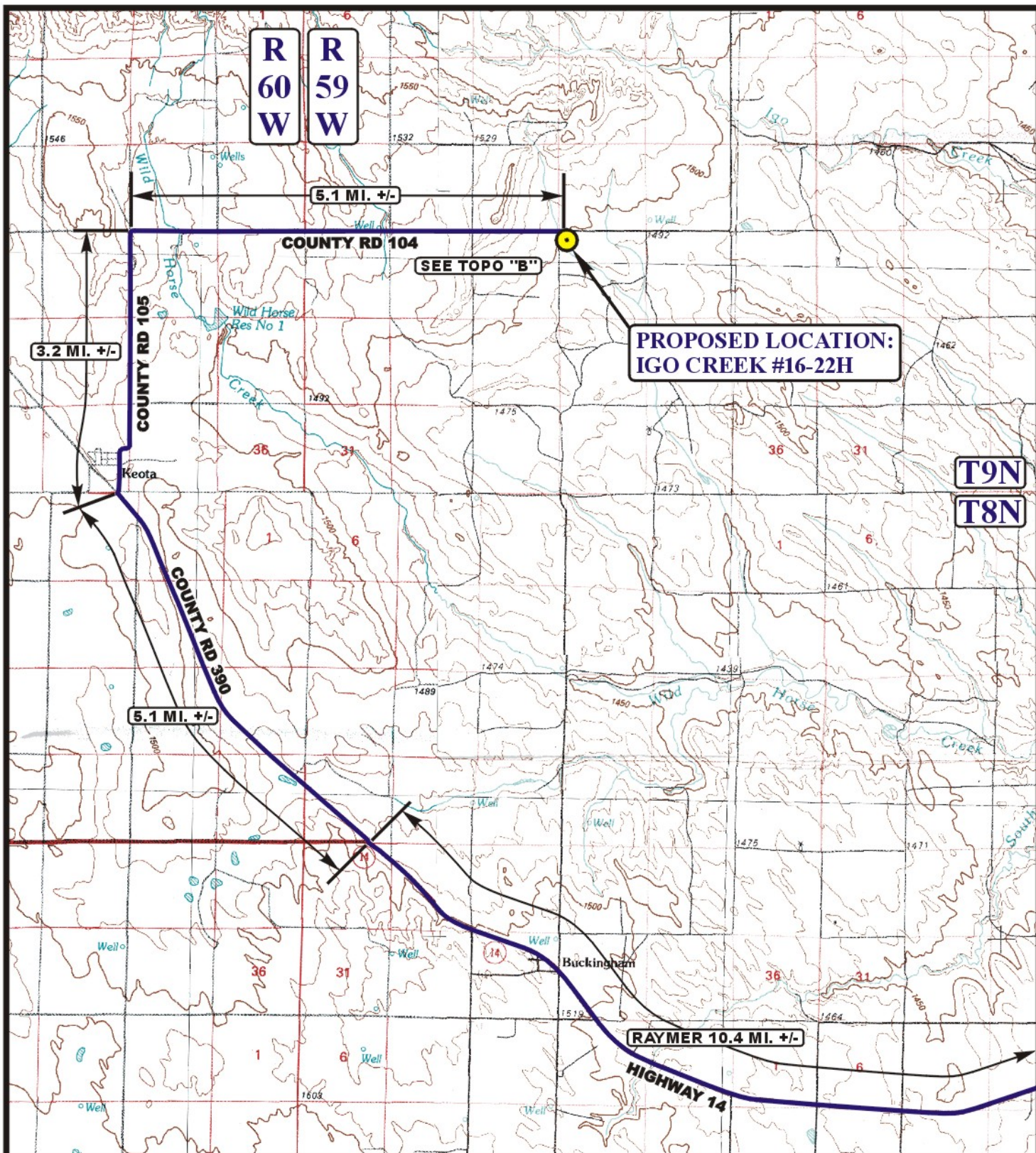


EOG RESOURCES, INC.
IGO CREEK #16-22H
SECTION 22, T9N, R59W, 6th P.M.

PROCEED IN A SOUTHWESTERLY, THEN NORTHWESTERLY DIRECTION FROM RAYMER, COLORADO ALONG HIGHWAY 14 APPROXIMATELY 10.4 MILES TO THE JUNCTION OF THIS ROAD AND COUNTY ROAD 390 TO THE NORTHWEST; TURN RIGHT AND PROCEED IN A NORTHWESTERLY DIRECTION APPROXIMATELY 5.1 MILES TO THE JUNCTION OF THIS ROAD AND COUNTY ROAD 105 TO THE NORTH; TURN RIGHT AND PROCEED IN A NORTHERLY DIRECTION APPROXIMATELY 3.2 MILES TO JUNCTION OF THIS ROAD AND COUNTY ROAD 104 TO THE EAST; TURN RIGHT AND PROCEED IN AN EASTERLY DIRECTION APPROXIMATELY 5.1 MILES TO THE BEGINNING OF THE PROPOSED ACCESS ROAD TO THE SOUTH; FOLLOW ROAD FLAGS IN A SOUTHERLY DIRECTION APPROXIMATELY 306' TO THE PROPOSED LOCATION.

TOTAL DISTANCE FROM RAYMER, COLORADO TO THE PROPOSED LOCATION IS APPROXIMATELY 23.8 MILES.



LEGEND:

 **PROPOSED LOCATION**

EOG RESOURCES, INC.

IGO CREEK #16-22H
SECTION 13, T9N, R59W, 6th P.M.
501' FNL 501' FWL



Uintah Engineering & Land Surveying
85 South 200 East Vernal, Utah 84078
(435) 789-1017 * FAX (435) 789-1813

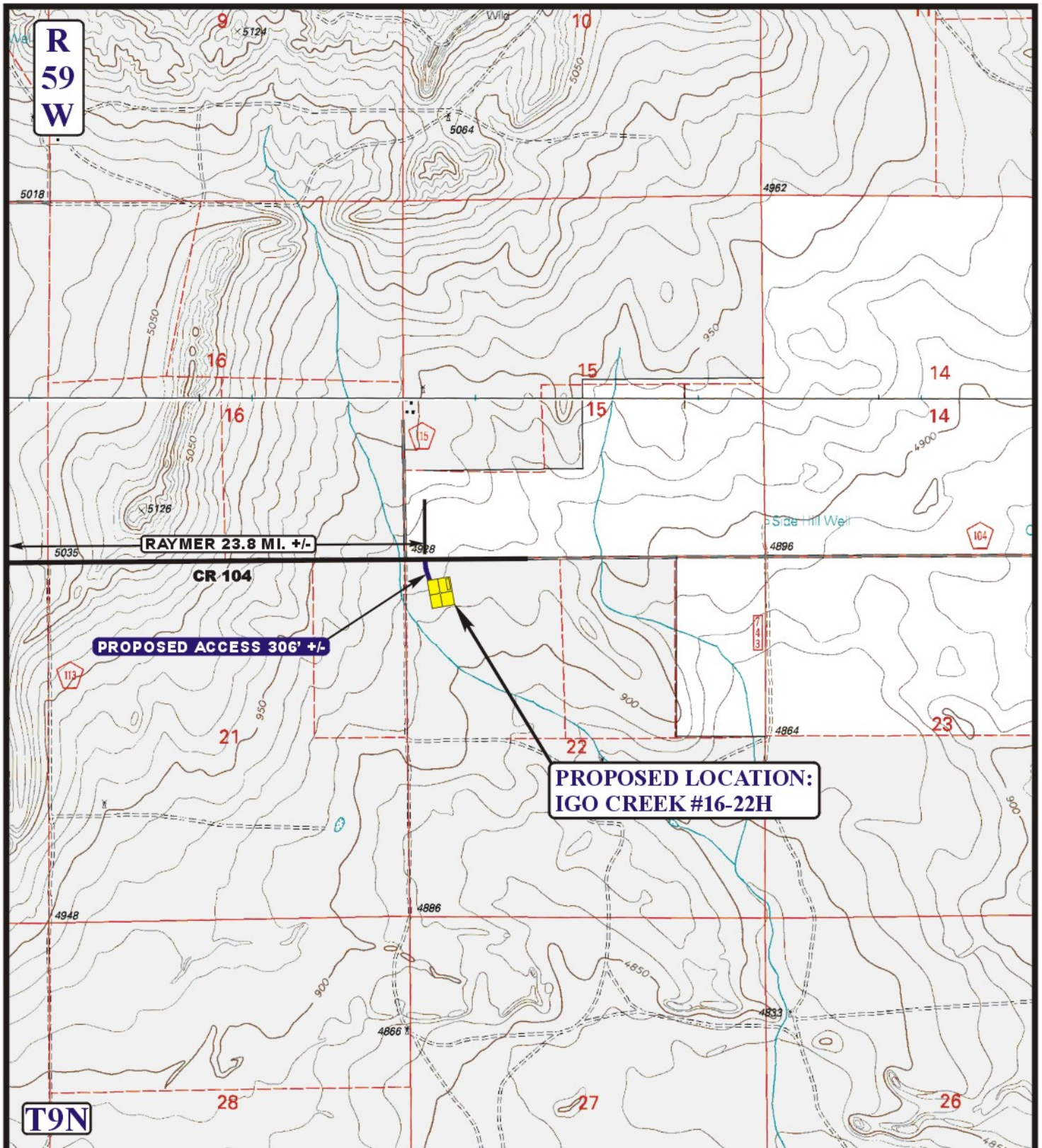


ACCESS ROAD
MAP

12 28 10
MONTH DAY YEAR

SCALE: 1:100,000 **DRAWN BY: S.F.** **REVISED: 00-00-00**





LEGEND:

———— EXISTING ROAD
 - - - - - PROPOSED ACCESS ROAD



EOG RESOURCES, INC.

IGO CREEK #16-22H
SECTION 22, T9N, R59W, 6th P.M.
501' FNL 501' FWL



Uintah Engineering & Land Surveying
 85 South 200 East Vernal, Utah 84078
 (435) 789-1017 * FAX (435) 789-1813

ACCESS ROAD
MAP

12 28 10
 MONTH DAY YEAR



SCALE: 1" = 2000' DRAWN BY: S.F. REVISED: 00-00-00