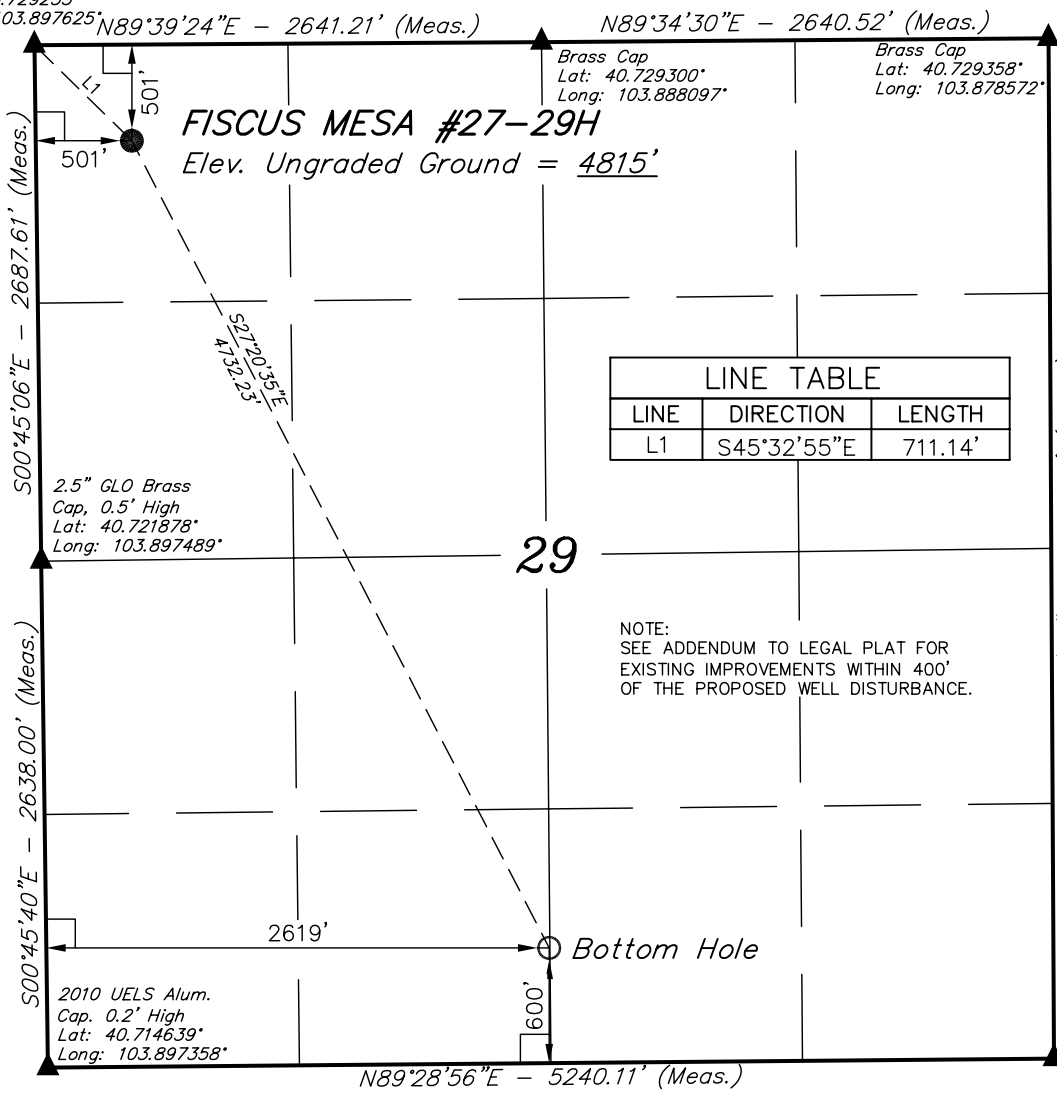


T9N, R58W, 6th. P.M.

EOG RESOURCES, INC.

Well location, FISCUS MESA #27-29H, located as shown in the NW 1/4 NW 1/4 of Section 29, T9N, R58W, 6th. P.M., Weld County, Colorado.

Brass Cap
Lat: 40.729253°
Long: 103.897625°



LINE TABLE		
LINE	DIRECTION	LENGTH
L1	S45°32'55"E	711.14'

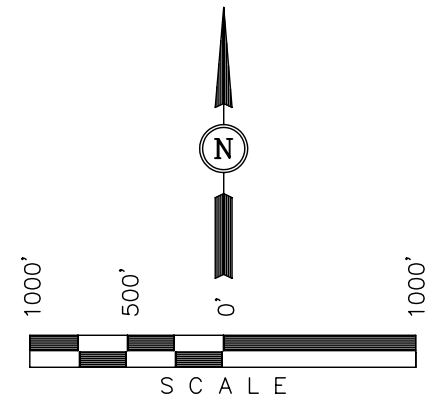
NOTE:
SEE ADDENDUM TO LEGAL PLAT FOR EXISTING IMPROVEMENTS WITHIN 400' OF THE PROPOSED WELL DISTURBANCE.

BASIS OF ELEVATION

SPOT ELEVATION LOCATED AT THE NE CORNER OF SECTION 15, T9N, R58W, 6th. P.M. TAKEN FROM THE RIVER BEND, QUADRANGLE, COLORADO, WELD COUNTY, 7.5 MINUTE QUAD (TOPOGRAPHIC MAP) PUBLISHED BY THE UNITED STATES DEPARTMENT OF THE INTERIOR, GEOLOGICAL SURVEY. SAID ELEVATION IS MARKED AS BEING 4679 FEET.

BASIS OF BEARINGS

BASIS OF BEARINGS IS A G.P.S. OBSERVATION.



CERTIFICATE

THIS IS TO CERTIFY THAT THE ABOVE PLAT WAS PREPARED FROM FIELD NOTES OF ACTUAL SURVEYS MADE BY ME OR UNDER MY SUPERVISION AND THAT THE SAME ARE TRUE AND CORRECT TO THE BEST OF MY KNOWLEDGE AND BELIEF.

Robert L. Link
17497
REGISTERED LAND SURVEYOR
REGISTRATION NO. 17492
STATE OF COLORADO

PDOP = 2.1

UINTAH ENGINEERING & LAND SURVEYING
85 SOUTH 200 EAST - VERNAL, UTAH 84078
(435) 789-1017

- LEGEND:**
- └─┘ = 90° SYMBOL
 - = PROPOSED WELL HEAD.
 - ▲ = SECTION CORNERS LOCATED.

NAD 83 (TARGET BOTTOM HOLE)	NAD 83 (SURFACE LOCATION)
LATITUDE = 40°42'58.88" (40.716356)	LATITUDE = 40°43'40.39" (40.727886)
LONGITUDE = 103°53'16.59" (103.887942)	LONGITUDE = 103°53'44.85" (103.895792)
NAD 27 (TARGET BOTTOM HOLE)	NAD 27 (SURFACE LOCATION)
LATITUDE = 40°42'58.93" (40.716369)	LATITUDE = 40°43'40.44" (40.727900)
LONGITUDE = 103°53'14.78" (103.887439)	LONGITUDE = 103°53'43.04" (103.895289)
STATE PLANE NAD 83 COLORADO NORTH	STATE PLANE NAD 83 COLORADO NORTH
N: 1507874.21 E: 3446855.11	N: 1512034.97 E: 3444603.37
STATE PLANE NAD 27 COLORADO NORTH	STATE PLANE NAD 27 COLORADO NORTH
N: 507872.72 E: 2447006.62	N: 512033.37 E: 2444754.76

SCALE 1" = 1000'	DATE SURVEYED: 10-19-10	DATE DRAWN: 11-5-10
PARTY B.B. D.B. J.I.	REFERENCES G.L.O. PLAT	
WEATHER WARM	FILE EOG RESOURCES, INC.	