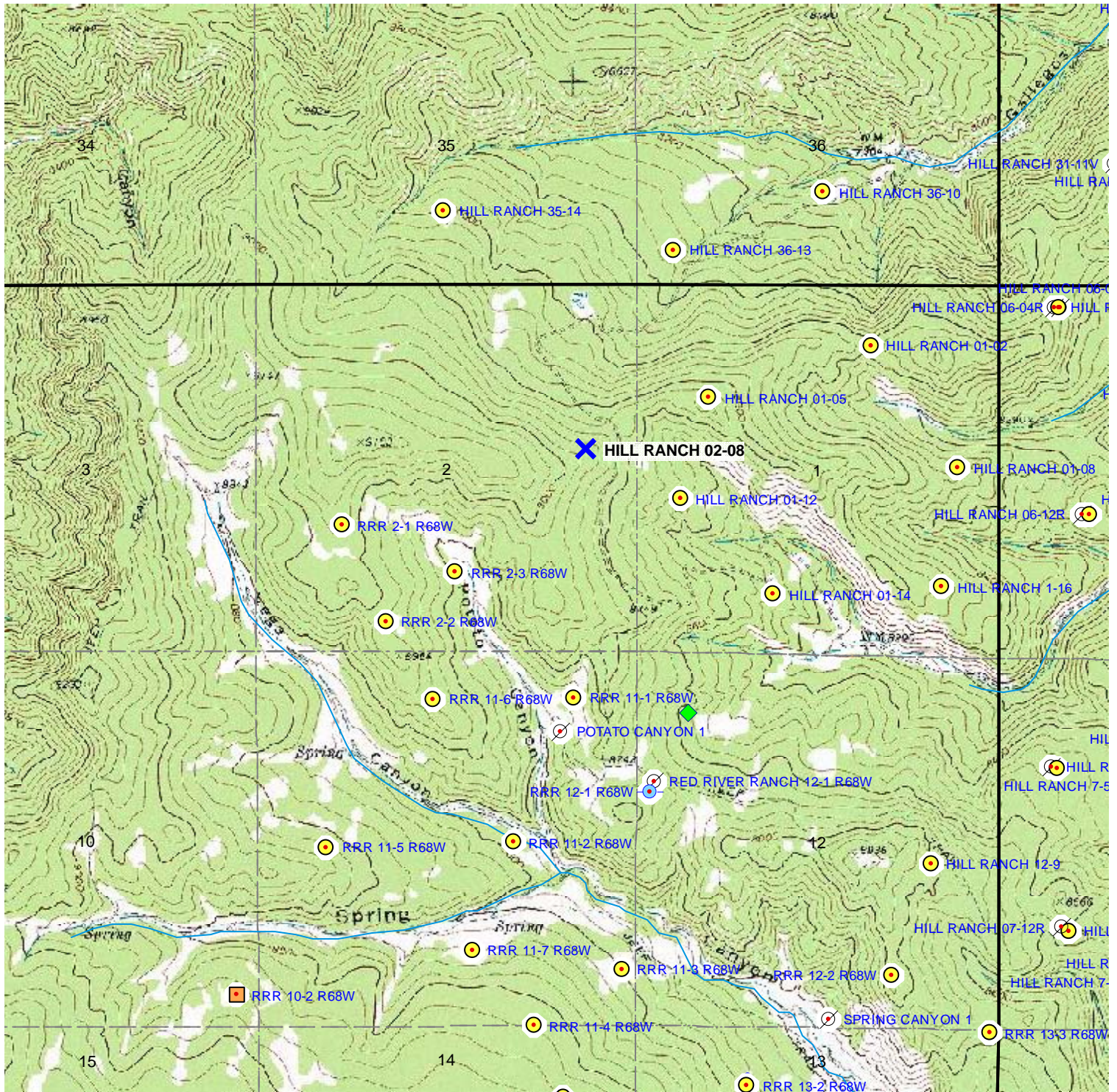


TOPOGRAPHIC MAP



- X Proposed Well
- Producing
- Plugged & Abandoned
- Abandoned Location
- Shut-In
- ◆ Pending Permits
- Permits

HILL RANCH 02-08
2,237' FNL & 702' FEL
SEC. 2, T35S, R68W, 6th P.M.
LAS ANIMAS COUNTY, CO



Scale 1" = 2,000'