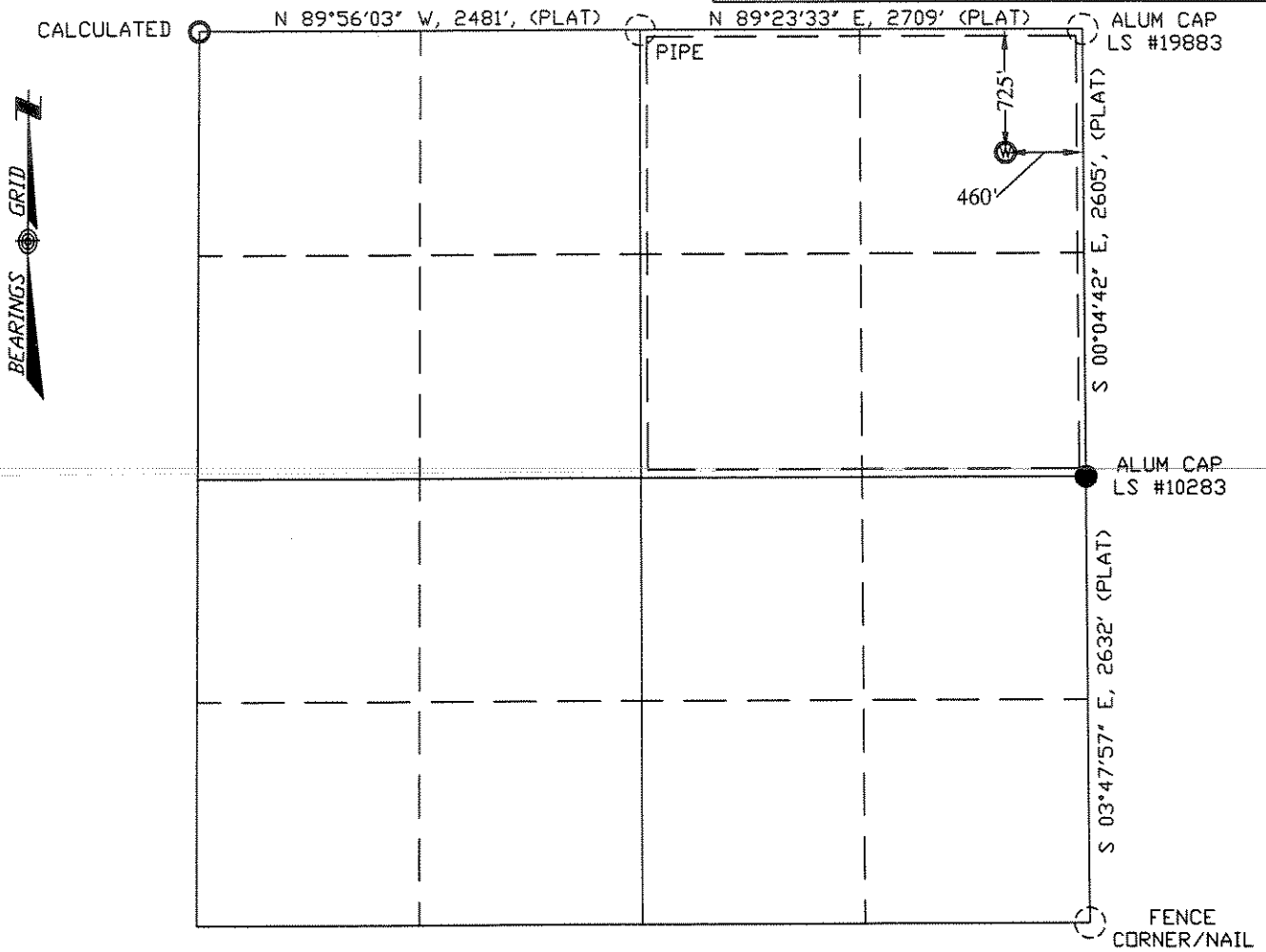


COLORADO WELL LOCATION

OPERATOR: Pioneer Natural Resources		WELL NAME: M. Gonzales 41-32 (Revised 2)	
SECTION 32 TOWNSHIP 31 S, RANGE 66 W OF THE 6TH P.M., IN LAS ANIMAS COUNTY			
ACTUAL FOOTAGE OF WELL LOCATION: 460 feet from the EAST line and 725 feet from the NORTH line.		GROUND ELEV. (NGVD29): 7203'	
BASIS OF BEARING: GPS Observations	BASIS OF ELEVATION: GPS Observations	PDDP: 2.4	
SURFACE USE: Timber	DATE STAKED: August 08, 2007	LAT: N 37.30708°	LONG: W 104.79698° (NAD27)
		LAT: N 37.30710°	LONG: W 104.79752° (NAD83)



Field Operator: R. Coberly

NOTICE:
SOME INFORMATION SHOWN HEREON IS BASED ON INFORMATION TAKEN FROM RECORD INFORMATION, PREVIOUS SURVEYS, PLATS AND SURVEYS BY OTHER SURVEYORS, OR COLLATORAL EVIDENCE AND MAY NOT REFLECT THAT WHICH MAY BE DISCLOSED BY A COMPLETE BOUNDARY SURVEY. **THIS SKETCH IS NOT TO BE RELIED UPON FOR THE ESTABLISHMENT OF SURFACE BOUNDARIES, FENCES, BUILDINGS OR OTHER FUTURE IMPROVEMENTS.**

I hereby certify that this proposed well location shown was plotted from field notes of a actual GIS survey and meets the requirements of Colorado Statue 38-51-109.3 and was made by me or under my supervision, and that the same is true and correct to the best of my knowledge and belief and **IS NOT A LAND SURVEY PLAT.**

Lee Shields August 09, 2007 (REVISED SHEET)
Lee Shields, CO PLS #37960 Date Platted

LEGEND:

- = WELL LOCATION
- = SURVEY MARKER (SEE DRAWING)
- = CALCULATED POINT
- = LOCATION FURNISHED BY PNR.

NOTE:

ALL WELL LOCATIONS AND ELEVATIONS DERIVED FROM OBSERVED GPS DATA AND DIFFERENTIALLY CORRECTED TO CORS STATION PUEBLO 1 (PID #AJ6946) AND MEET AND/OR EXCEED COGCC RULE 303c AND RULE 215a-h.

NO VISIBLE IMPROVEMENTS WITHIN 200 FEET OF PROPOSED WELLHEAD UNLESS NOTED OTHERWISE.

DISTANCES ARE MEASURED AT 90° (NINETY DEGREES) FROM SAID SECTION LINES TO THE WELL LOCATION.

DESIRED PDDP MAY NOT BE OBTAINED DUE TO NATIVE CONDITIONS OF SITE.

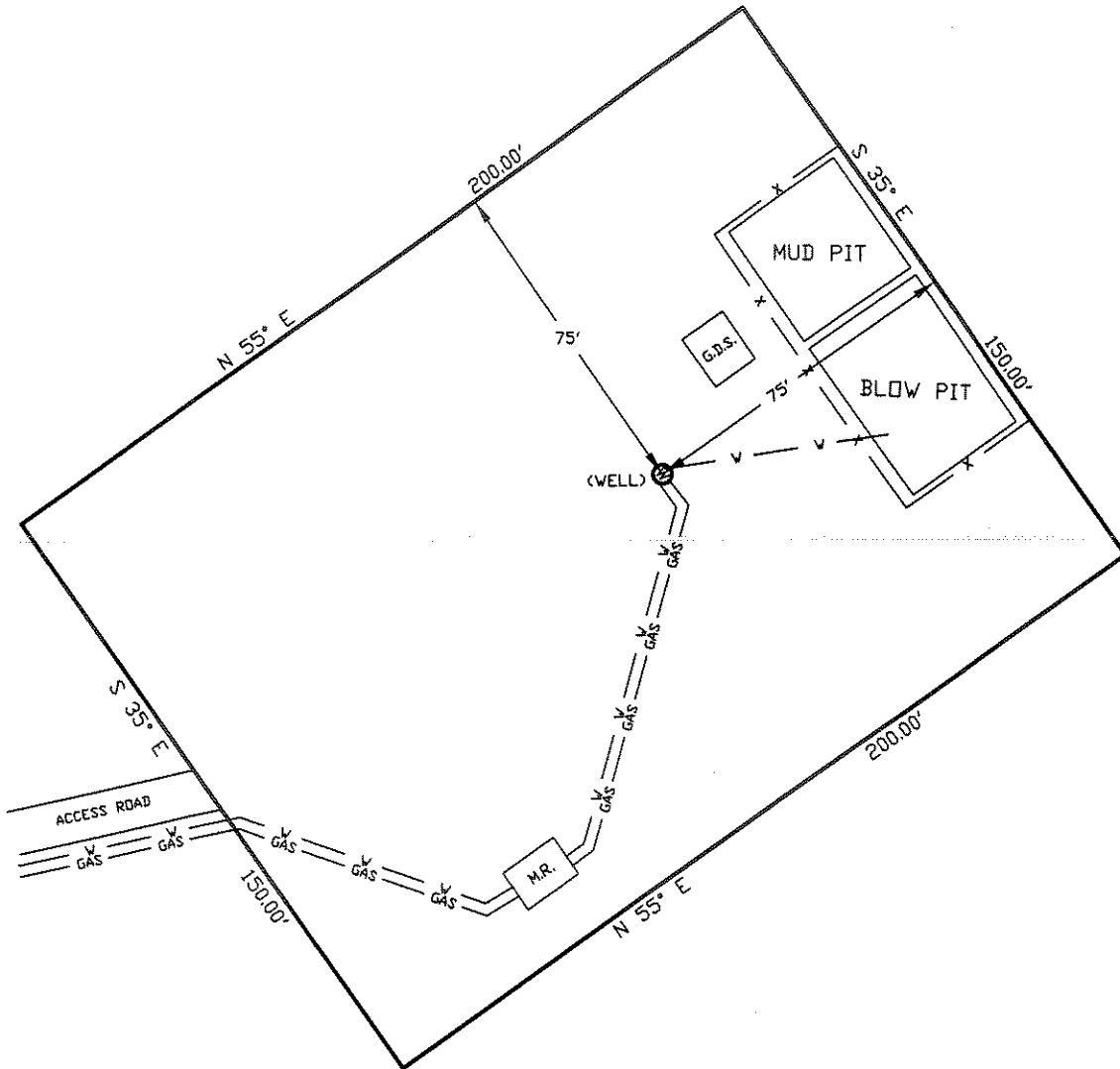
SHIELDS SURVEY L^{td}. Co. Raton, New Mexico 87740
(505)445-1232

WELLSITE/PRODUCTION EQUIPMENT LAYOUT

OPERATOR: Pioneer Natural Resources

WELL NAME: M Gonzales 41-32 (Rev 2)

NENE of SECTION 32 TOWNSHIP 31 S, RANGE 66 W OF THE 6TH P.M., IN LAS ANIMAS COUNTY



NOTE:

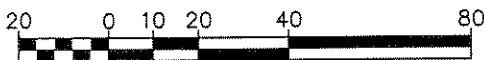
MUD AND BLOW PITS WILL BE CONVERTED TO UNLINED EVAPORATION PITS FOR PRODUCTION.

WELLHEADS ARE TYPICALLY PCP DRIVE HEADS

August 10, 2007

Date Platted

GRAPHIC SCALE



(IN FEET)

1 inch = 40 ft.

LEGEND:

- = WELLHEAD
- = EXISTING WELLPAD
- = FENCE (4 STRAND)
- = 4" GAS GATHERING LINE
- = 2" WATER LINE
- M.R. = COMBO METER RUN AND WATER/GAS SEPARATOR
- G.D.S. = GAS DRIVE SYSTEM

SHIELDS SURVEY Ltd. Co.
Raton, New Mexico 87740
(505)445-1232