

OXY GRAND JUNCTION EBUSINESS

CC 697-17-08A

OXY/H&P/330

## **Post Job Summary**

### **Cement Surface Casing**

Prepared for:  
Date Prepared:  
Version: 1

Service Supervisor: SMITH, DUSTIN

Submitted by:

**HALLIBURTON**

### The Road to Excellence Starts with Safety

Sold To #: 344034	Ship To #: 2703133	Quote #:	Sales Order #: 7406946
Customer: OXY GRAND JUNCTION EBUSINESS	Customer Rep: Benevides, Simon		
Well Name: CC	Well #: 697-17-08A	API/UWI #:	
Field: PICEANCE	City (SAP): PARACHUTE	County/Parish: Garfield	State: Colorado
Contractor: OXY	Rig/Platform Name/Num: H&P 330		
Job Purpose: Cement Surface Casing			
Well Type: Development Well	Job Type: Cement Surface Casing		
Sales Person: DUNNING, DUSTIN	Srvc Supervisor: SMITH, DUSTIN	MBU ID Emp #:	418015

### Job Personnel

HES Emp Name	Exp Hrs	Emp #	HES Emp Name	Exp Hrs	Emp #	HES Emp Name	Exp Hrs	Emp #
GAMBLE, BENJAMIN T	23	446666	REEVES, BRANDON W	23	287883	SALAZAR, PAUL Omar	23	445614
SLAUGHTER, JESSE Dean	23	454315	SMITH, DUSTIN Michael	23	418015			

### Equipment

HES Unit #	Distance-1 way	HES Unit #	Distance-1 way	HES Unit #	Distance-1 way	HES Unit #	Distance-1 way
10000394	120 mile	10296152C	120 mile	10783493	120 mile	10784080	120 mile
10804579	120 mile	10822007	120 mile	10856450	120 mile	10856464	120 mile
10897797	120 mile	11259882	120 mile				

### Job Hours

Date	On Location Hours	Operating Hours	Date	On Location Hours	Operating Hours	Date	On Location Hours	Operating Hours
06/05/10	3.5	0	06/06/10	19.5	7			

**TOTAL** Total is the sum of each column separately

### Job

Formation Name	Top	Bottom	Called Out	Date	Time	Time Zone
Formation Depth (MD)			On Location	05 - Jun - 2010	16:00	MST
Form Type		BHST	Job Started	05 - Jun - 2010	20:30	MST
Job depth MD	2953. ft	Job Depth TVD	Job Completed	06 - Jun - 2010	09:08	MST
Water Depth		Wk Ht Above Floor	Job Completed	06 - Jun - 2010	17:02	MST
Perforation Depth (MD)	From	To	Departed Loc	06 - Jun - 2010	19:30	MST

### Well Data

Description	New / Used	Max pressure psig	Size in	ID in	Weight lbm/ft	Thread	Grade	Top MD ft	Bottom MD ft	Top TVD ft	Bottom TVD ft
-------------	------------	-------------------	---------	-------	---------------	--------	-------	-----------	--------------	------------	---------------

### Sales/Rental/3<sup>rd</sup> Party (HES)

Description	Qty	Qty uom	Depth	Supplier
PLUG,CMTG,TOP,9 5/8,HWE,8.16 MIN/9.06 MA	1	EA		

### Tools and Accessories

Type	Size	Qty	Make	Depth	Type	Size	Qty	Make	Depth	Type	Size	Qty	Make
Guide Shoe					Packer					Top Plug	9 5/8	1	
Float Shoe					Bridge Plug					Bottom Plug			
Float Collar					Retainer					SSR plug set			
Insert Float										Plug Container	9 5/8	1	
Stage Tool										Centralizers			

### Miscellaneous Materials

Gelling Agt	Conc	Surfactant	Conc	Acid Type	Qty	Conc	%
Treatment Fld	Conc	Inhibitor	Conc	Sand Type	Size	Qty	

### Fluid Data

Stage/Plug #: 1	Fluid #	Stage Type	Fluid Name	Qty	Qty uom	Mixing Density lbm/gal	Yield ft3/sk	Mix Fluid Gal/sk	Rate bbl/min	Total Mix Fluid Gal/sk
-----------------	---------	------------	------------	-----	---------	------------------------	--------------	------------------	--------------	------------------------

1	WATER SPACER		20.00	bbl	8.33	.0	.0	5.0	
2	SUPER FLUSH 101	SUPER FLUSH 101 - SBM (12199)	20.00	bbl	10.	.0	.0	5.0	
3	WATER SPACER		20.00	bbl	8.33.	.0	.0	5.0	
4	Lead Cement	VERSACEM (TM) SYSTEM (452010)	1240.0	sacks	12.3	2.33	12.62	5.0	12.62
5	Tail Cement	VERSACEM (TM) SYSTEM (452010)	160.0	sacks	12.8	2.07	10.67	5.0	10.67
6	DISPLACEMENT		221.8	bbl	.	.0	.0	5.0	
Calculated Values		Pressures		Volumes					
Displacement	221.8	Shut In: Instant		Lost Returns	887	Cement Slurry	606	Pad	
Top Of Cement	SURFACE	5 Min		Cement Returns	4	Actual Displacement	221.8	Treatment	
Frac Gradient		15 Min		Spacers	60	Load and Breakdown		Total Job	887
Rates									
Circulating	20 STROKES	Mixing	5	Displacement	5	Avg. Job	5		
Cement Left In Pipe	Amount	0 ft	Reason	Shoe Joint					
Frac Ring # 1 @	ID	Frac ring # 2 @	ID	Frac Ring # 3 @	ID	Frac Ring # 4 @	ID		
The Information Stated Herein Is Correct				Customer Representative Signature					

*The Road to Excellence Starts with Safety*

Sold To #: 344034	Ship To #: 2703133	Quote #:	Sales Order #: 7406946
Customer: OXY GRAND JUNCTION EBUSINESS	Customer Rep: Benevides, Simon		
Well Name: CC	Well #: 697-17-08A	API/UWI #:	
Field: PICEANCE	City (SAP): PARACHUTE	County/Parish: Garfield	State: Colorado
Legal Description:			
Lat: N 0 deg. OR N 0 deg. 0 min. 0 secs.	Long: E 0 deg. OR E 0 deg. 0 min. 0 secs.		
Contractor: OXY	Rig/Platform Name/Num: H&P 330		
Job Purpose: Cement Surface Casing	Ticket Amount:		
Well Type: Development Well	Job Type: Cement Surface Casing		
Sales Person: DUNNING, DUSTIN	Srvc Supervisor: SMITH, DUSTIN	MBU ID Emp #: 418015	

Activity Description	Date/Time	Cht #	Rate bbl/min	Volume bbl		Pressure psig		Comments
				Stage	Total	Tubing	Casing	
Call Out	06/05/2010 16:00							ELITE # 9
Depart Yard Safety Meeting	06/05/2010 18:00							ALL HES EMPLOYEES
Arrive At Loc	06/05/2010 20:30							RIG COMING OUT OF HOLE WITH DRILL PIPE
Assessment Of Location Safety Meeting	06/05/2010 21:00							ALL HES EMPLOYEES
Pre-Rig Up Safety Meeting	06/06/2010 02:00							ALL HES EMPLOYEES
Rig-Up Equipment	06/06/2010 02:30							1 F-550 PICKUP 1 HT-400 PUMP TRUCK 1 SUPER FLUSH TRANSPORT 2 FIELD STORAGE BINS
Pre-Job Safety Meeting	06/06/2010 08:45							ALL HES EMPLOYEES AND RIG CREW
Rig-Up Completed	06/06/2010 09:05							RIG CIRCULATED FOR 1 HOUR PRIOR TO JOB
Start Job	06/06/2010 09:08							TD: 2953 TP: 2918 SJ: 49 MUD WT: 8.9 9 5/8 36# CSG 14 3/4 OH
Test Lines	06/06/2010 09:11					3000.0		PRESSURE TEST OK
Pump Spacer 1	06/06/2010 09:17		5	20	20		117.0	FRESH WATER
Pump Spacer 2	06/06/2010 09:21		5	20	20		172.0	SUPERFLUSH 101
Pump Spacer 1	06/06/2010 09:25		5	20	20		130.0	FRESH WATER
Pump Lead Cement	06/06/2010 09:32		5	514.6	543		240.0	1240 SKS 12.3 PPG 2.33 YIELD 12.62 GAL/SK
Activity Description	Date/Time	Cht	Rate bbl/min	Volume bbl		Pressure psig		Comments

Sold To # : 344034 Ship To # : 2703133 Quote # : Sales Order # : 7406946

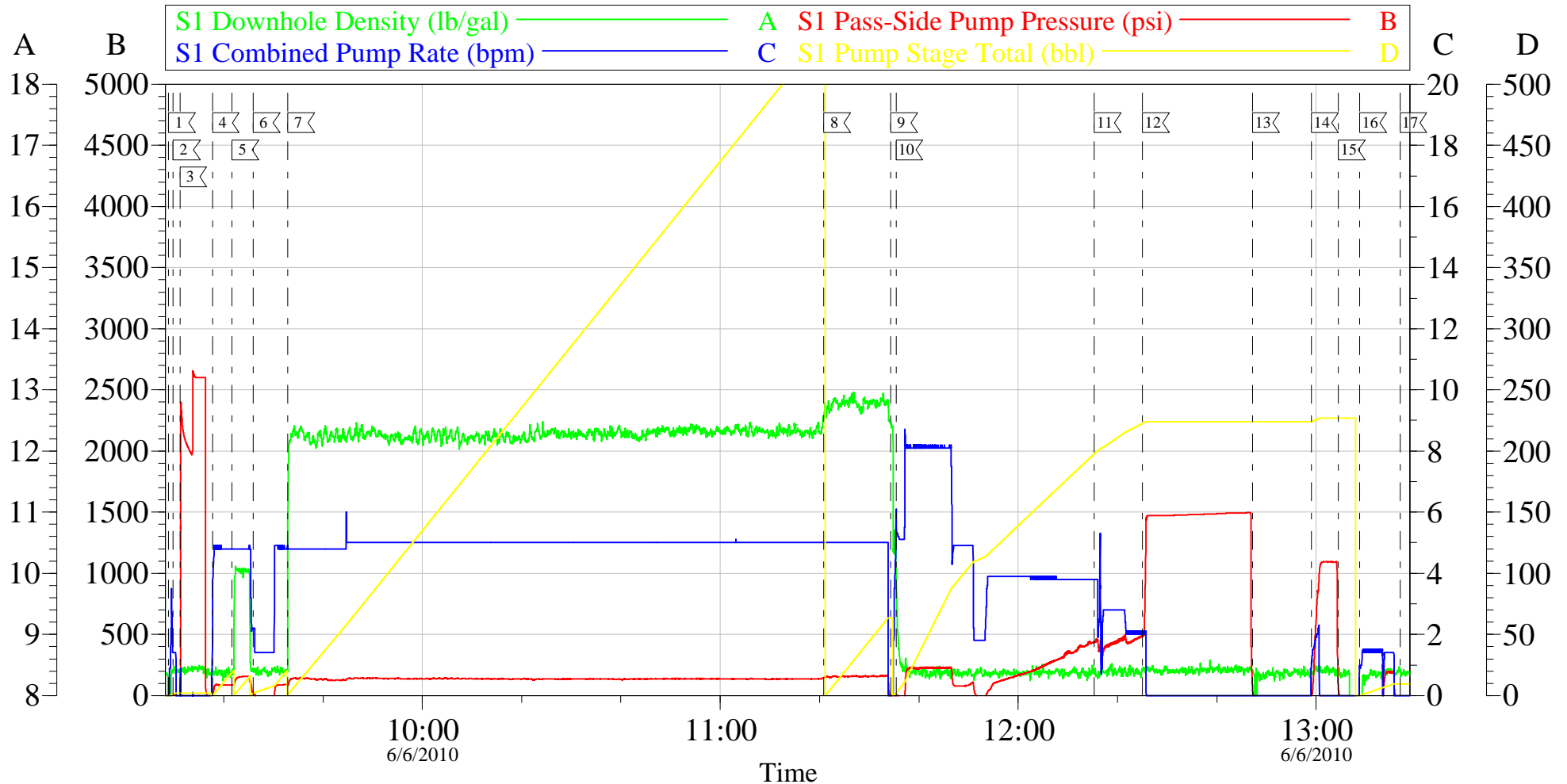
		#		Stage	Total	Tubing	Casing	
Pump Tail Cement	06/06/2010 11:20		5	58.9	63		222.0	160 SKS 12.8 PPG 2.07 YIELD 10.67 GAL/SK
Shutdown	06/06/2010 11:34							
Drop Plug	06/06/2010 11:34							PLUG AWAY NO PROBLEMS
Pump Displacement	06/06/2010 11:35		5	221.8	221.8		522.0	FRESH WATER
Slow Rate	06/06/2010 12:15		2	201.8	201.8		510.0	
Bump Plug	06/06/2010 12:25		2	221.8	221.8		1500. 0	PRESSURE WAS 600 BEFORE BUMPING PRESSURED UP TO 1500 PSI AS PER COMPANY REP TO TEST CASING
Check Floats	06/06/2010 12:47							FLOATS DIDNT HOLD RE BUMPED PLUG PRESSURED UP TO 1000 PSI HELD FOR 4 MINUTES RELEASED PRESSURE FLOATS HOLDING
Other	06/06/2010 13:08		1.5	10	10		280.0	10 BBLs SUGAR WATER TO CLEAR PARASITE STRING__PARASITE CLEAR
End Job	06/06/2010 13:16							NO CIRCULATION THROUGHOUT JOB NO PIPE MOVEMENT DURING JOB NO CEMENT RETURNS TRANSPORT ON LOCATION FOR 17 HOURS
Start Job	06/06/2010 14:21							TOP OUT # 1
Other	06/06/2010 14:21							FILL LINES
Pump Cement	06/06/2010 14:31		3	47.5	40	120.0		150 SKS 14 PPG 1.78 YIELD 7.67 GAL/SK PUMPED 57 BBLs CEMENT ACCORDING TO BBL COUNTER BUT WE WERENT MOVING CEMENT AS FAST AS WE WERE PUMPING
Activity Description	Date/Time	Cht #	Rate bbl/ min	Volume bbl		Pressure psig		Comments
				Stage	Total	Tubing	Casing	

## *Cementing Job Log*

Clean Lines	06/06/2010 14:54		3	2	2			
Shutdown	06/06/2010 14:57							NO CEMENT TO SURFACE
End Job	06/06/2010 14:57							WAIT 1 1/2 HOURS TO TOP OUT AGAIN
Start Job	06/06/2010 16:53							TOP OUT # 2
Pump Cement	06/06/2010 16:53		3	19	19	120.0		60 SKS 14 PPG 1.78 YIELD 7.67 GAL/SK
Clean Lines	06/06/2010 17:02		3	1	1			LINES CLEAN
Shutdown	06/06/2010 17:02							4 BBLS CEMENT TO SURFACE
End Job	06/06/2010 17:02							
Pre-Rig Down Safety Meeting	06/06/2010 17:30							ALL HES EMPLOYEES
Rig-Down Equipment	06/06/2010 18:00							
Pre-Convoy Safety Meeting	06/06/2010 19:00							ALL HES EMPLOYEES
Crew Leave Location	06/06/2010 19:30							THANK YOU FOR CHOOSING HALLIBURTON DUSTIN SMITH AND CREW

# OXY

## 9 5/8 SURFACE



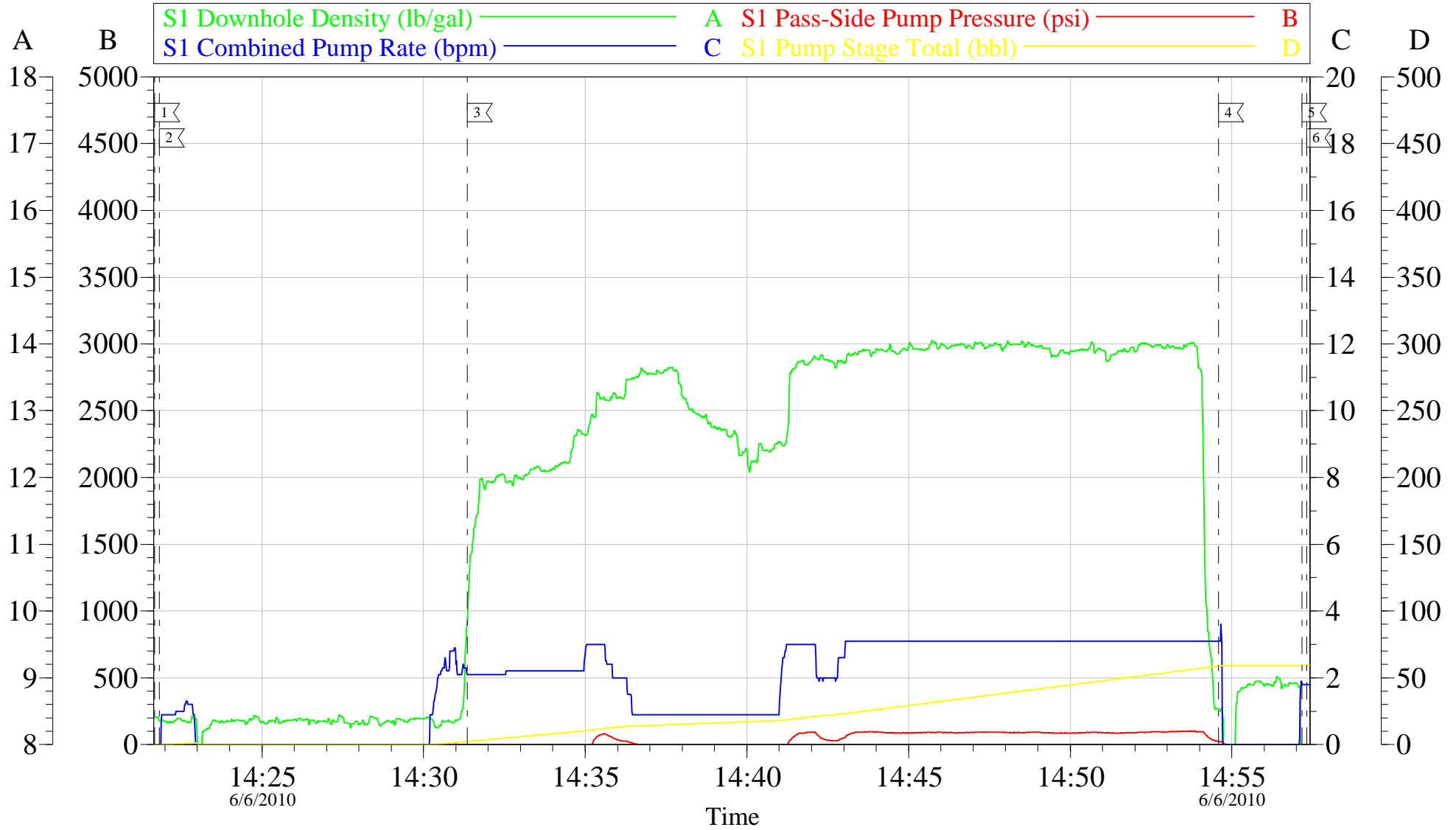
Local Event Log					
1	START JOB	09:08:53	2	FILL LINES	09:09:51
3	TEST LINES	09:11:11	4	PUMP FRESH WATER	09:17:43
5	PUMP SUPERFLUSH	09:21:39	6	PUMP FRESH WATER	09:25:55
7	PUMP LEAD CEMENT	09:32:54	8	PUMP TAIL CEMENT	11:20:52
9	SHUTDOWN/DROP PLUG	11:34:22	10	PUMP DISPLACEMENT	11:35:24
11	SLOW RATE	12:15:20	12	BUMP PLUG	12:25:03
13	CHECK FLOATS	12:47:13	14	BUMP PLUG	12:59:04
15	CHECK FLOATS	13:04:26	16	CLEAR PARASITE	13:08:46
17	END JOB	13:16:54			

Customer: OXY	Job Date: 06-Jun-2010	Sales Order #: 7406946
Well Description: CC 697=17-08A	Job Type: 9 5/8 SURFACE	ADC Used: YES
Company Rep: DIMITRY SMUSHKOV	Cement Supervisor: DUSTIN SMITH	Elite #: 9 PAUL SALAZAR

OptiCem v6.4.8  
06-Jun-10 13:25

# OXY

## TOP OUT # 1

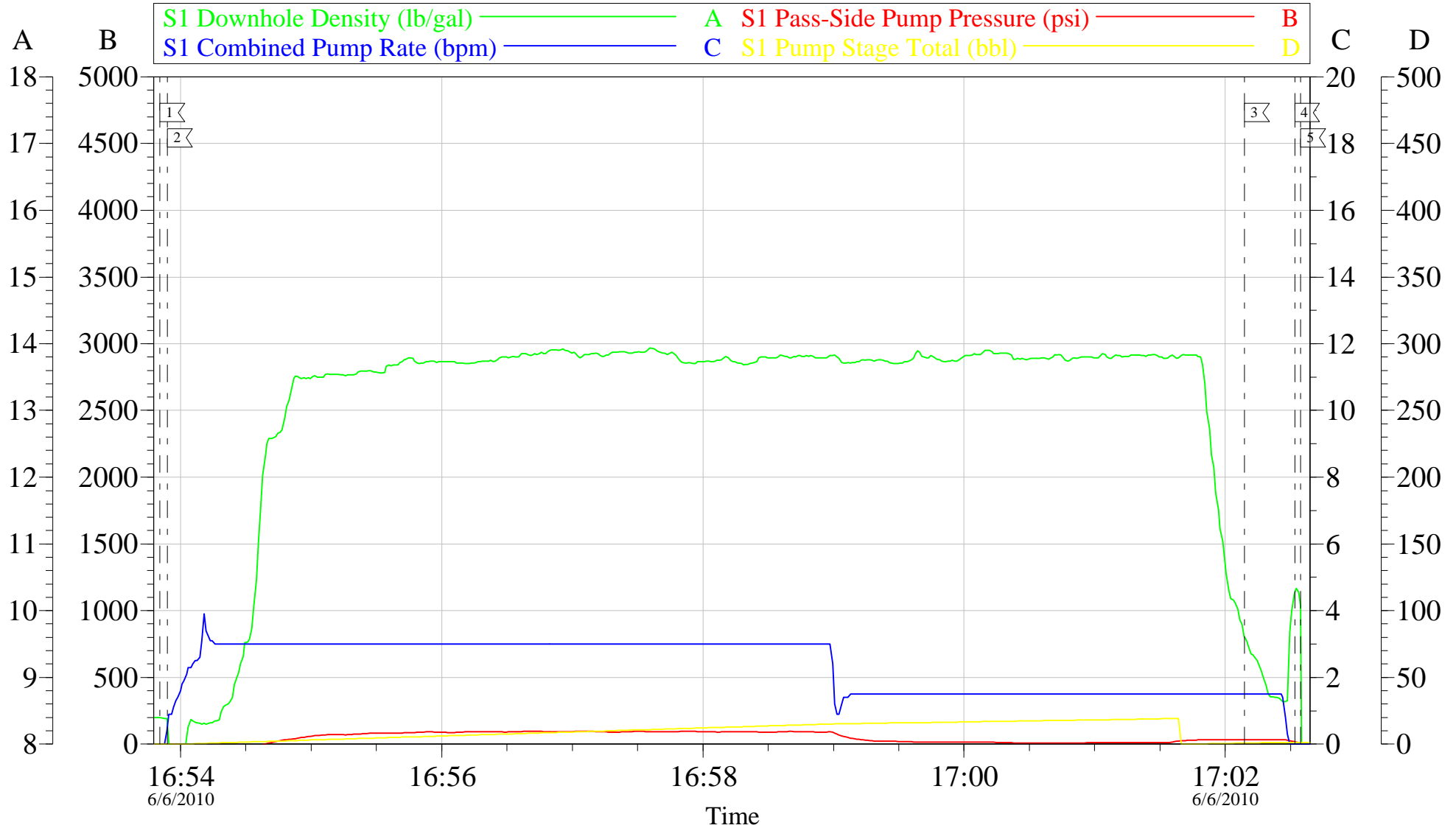


Customer: OXY	Job Date: 06-Jun-2010	Sales Order #: 7406946
Well Description: CC 697-17-08A	Job Type: TOP OUT	ADC Used: YES
Company Rep: SIMON BENEVIDES	Cement Supervisor: DUSTIN SMITH	Elite #: 9 PAUL SALAZAR

OptiCem v6.4.8  
06-Jun-10 15:02



# OXY TOP OUT # 2



Customer: OXY	Job Date: 06-Jun-2010	Sales Order #: 7406946
Well Description: CC 697-17-08A	Job Type: TOP OUT # 2	ADC Used: YES
Company Rep: SIMON BENEVIDES	Cement Supervisor: DUSTIN SMITH	Elite #: 9 PAUL SALAZAR

OptiCem v6.4.8  
06-Jun-10 17:14