



SUPERIOR
Black Lick, Pa.
Mercer, Pa.
Wooster, Oh.
Cleveland, Ok.
Trinidad, Co.

COMPENSATED DEN;
NEUTRON
LOG

Company XTO Energy Inc.
Well Apache Canyon 19-14
Field Purgatoire River
County Las Animas State Colorado

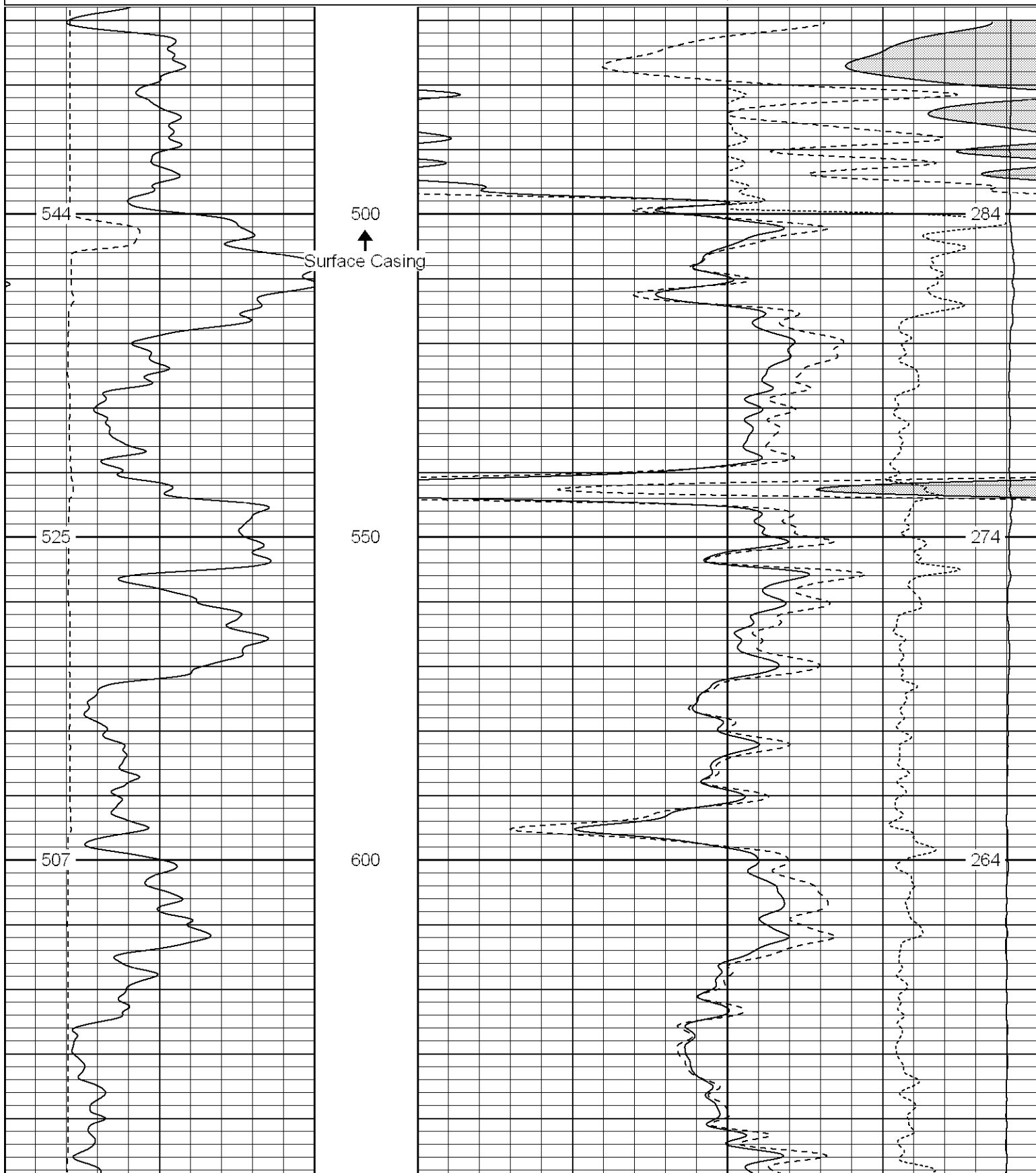
Location: API # : 05 071 08927 00
598' FSL & 2236' FWL
SEC 19 TWP 34S RGE 67W
Permanent Datum Ground Level Elevation 7614'
Log Measured From Ground Level
Drilling Measured From Ground Level

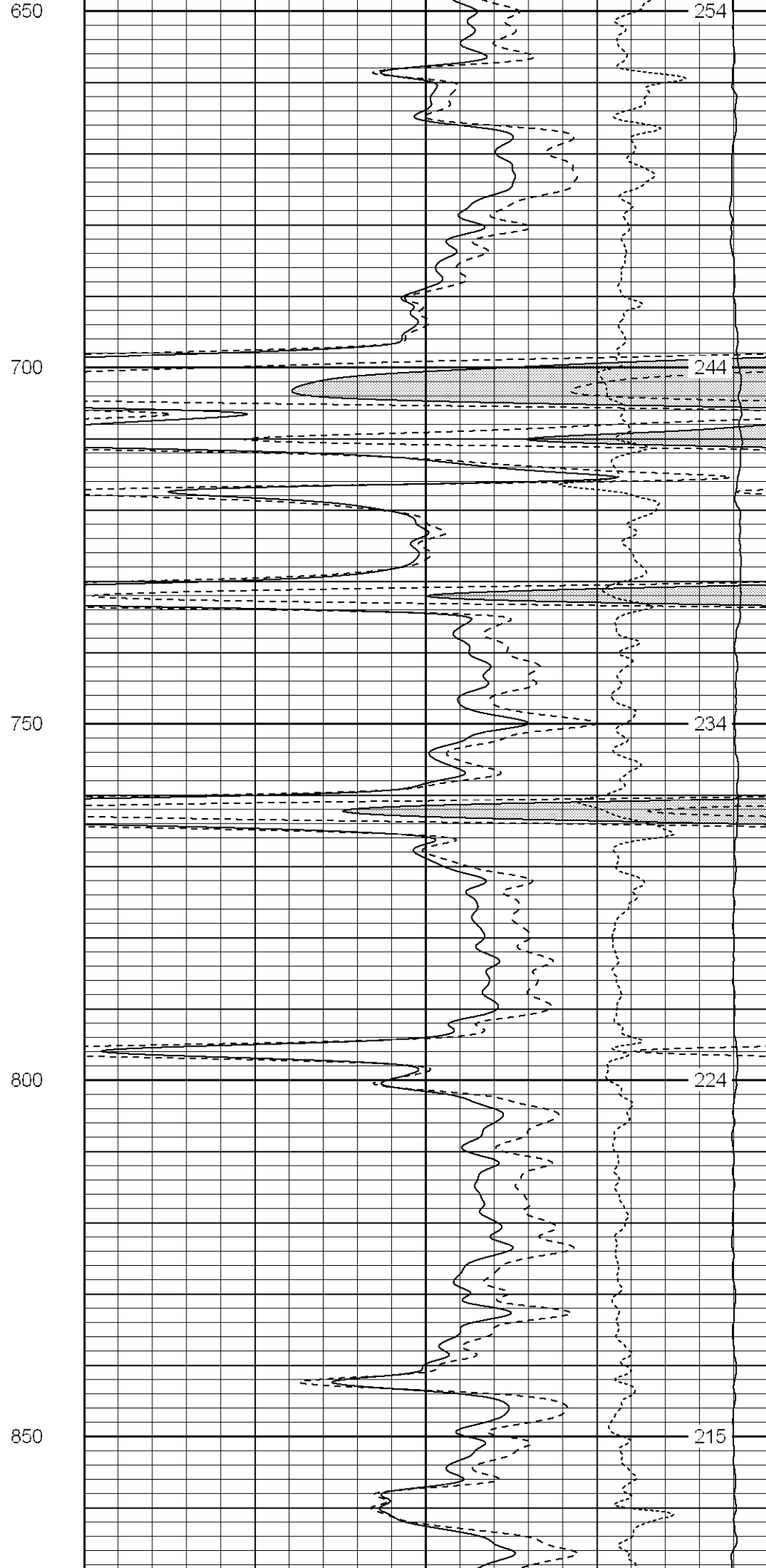
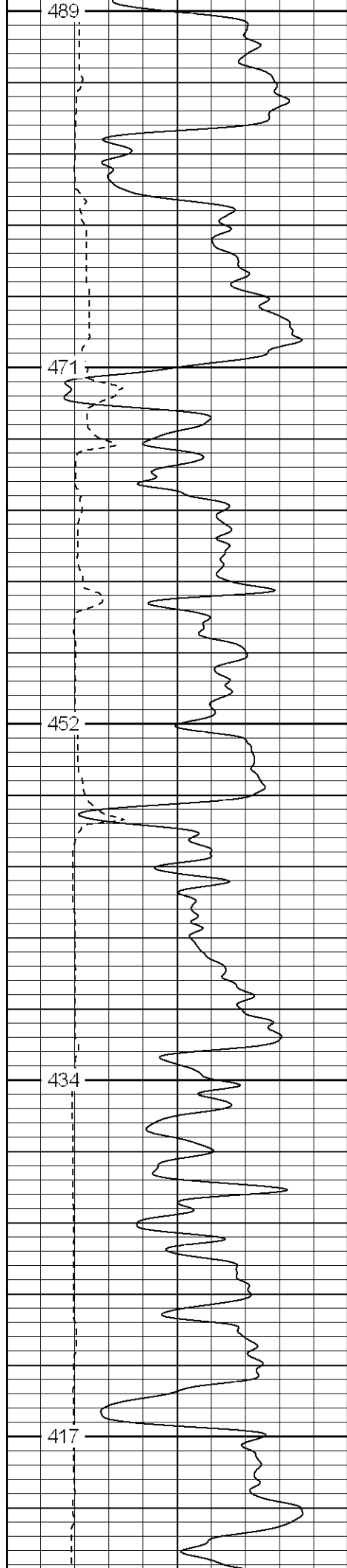
| | | | |
|------------------------------|-----------------|--|--|
| Date | 1-24-07 | | |
| Run Number | Two | | |
| Depth Driller | 2100' | | |
| Depth Logger | 2074' | | |
| Bottom Logged Interval | 2072' | | |
| Top Log Interval | Surface Casing | | |
| Casing Driller | 8 5/8" @ 497' | | |
| Casing Logger | 500' | | |
| Bit Size | 7 7/8" | | |
| Type Fluid in Hole | Water | | |
| Density / Viscosity | /// | | |
| pH / Fluid Loss | /// | | |
| Source of Sample | /// | | |
| Rm @ Meas. Temp | /// | | |
| Rmf @ Meas. Temp | /// | | |
| Rmc @ Meas. Temp | /// | | |
| Source of Rmf / Rmc | /// | | |
| Rm @ BHT | /// | | |
| Time Circulation Stopped | 8:00 P.M. | | |
| Time Logger on Bottom | 10:45 P.M. | | |
| Maximum Recorded Temperature | 101 DEG F | | |
| Equipment Number | T0697 | | |
| Location | Trinidad | | |
| Recorded By | M. Norton | | |
| Witnessed By | Mr. Don Johnson | | |

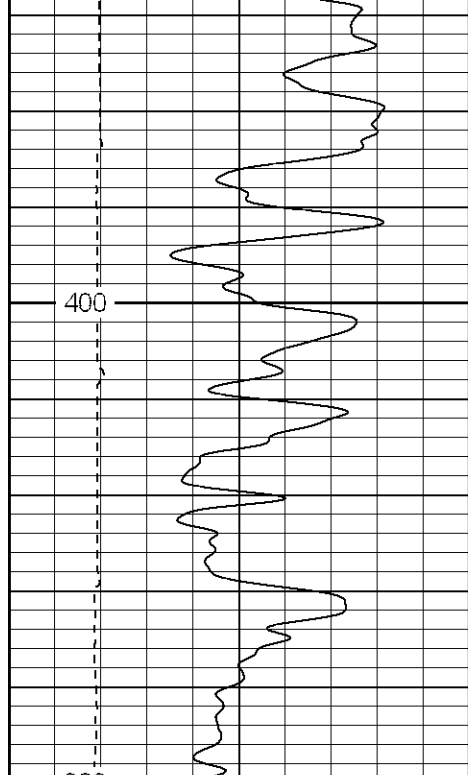
Database File: xtoac1914.db
Dataset Pathname: pass4.1
Presentation Format: cdl
Dataset Creation: Fri Jan 26 00:08:22 2007 by Calc Open-Cased 060407
Charted by: Depth in Feet scaled 1:240

| | | |
|---|-----------|-----|
| 0 | GR (GAPI) | 200 |
| 6 | DCAL (in) | 16 |

| | | |
|------|-------------|-----|
| 1 | RHOB (g/cc) | 2 |
| 30 | DPOR (pu) | -10 |
| -0.5 | RHOC (g/cc) | 0.5 |
| 4000 | LTEN (lb) | 0 |

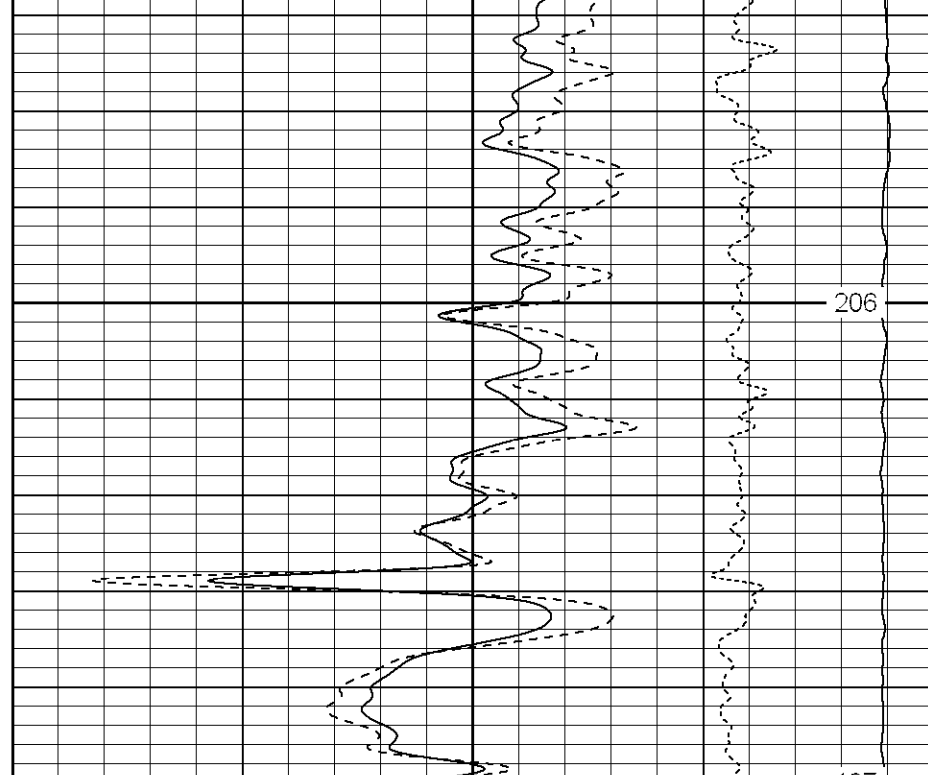




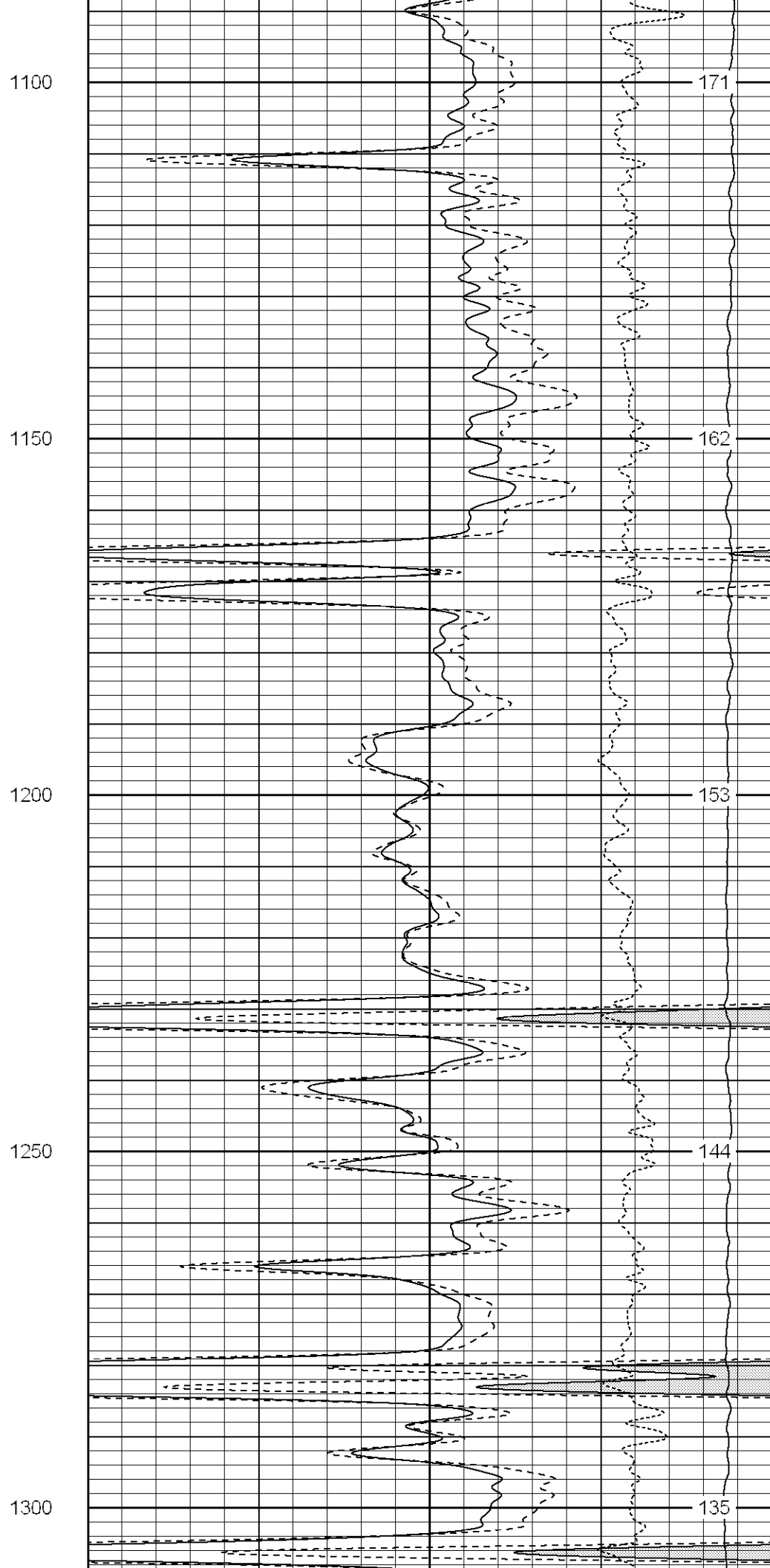
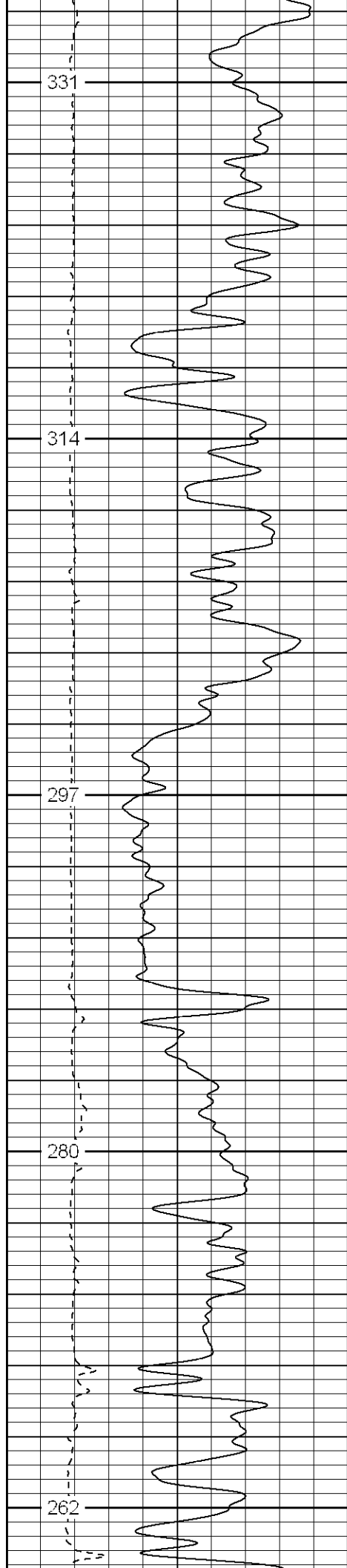


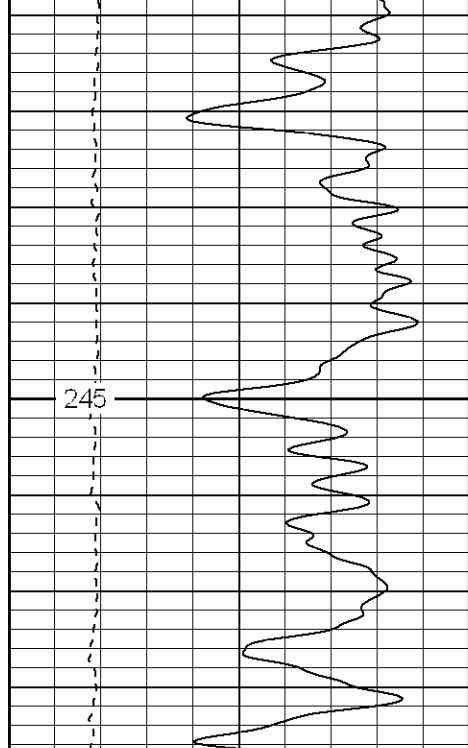
900

3 3

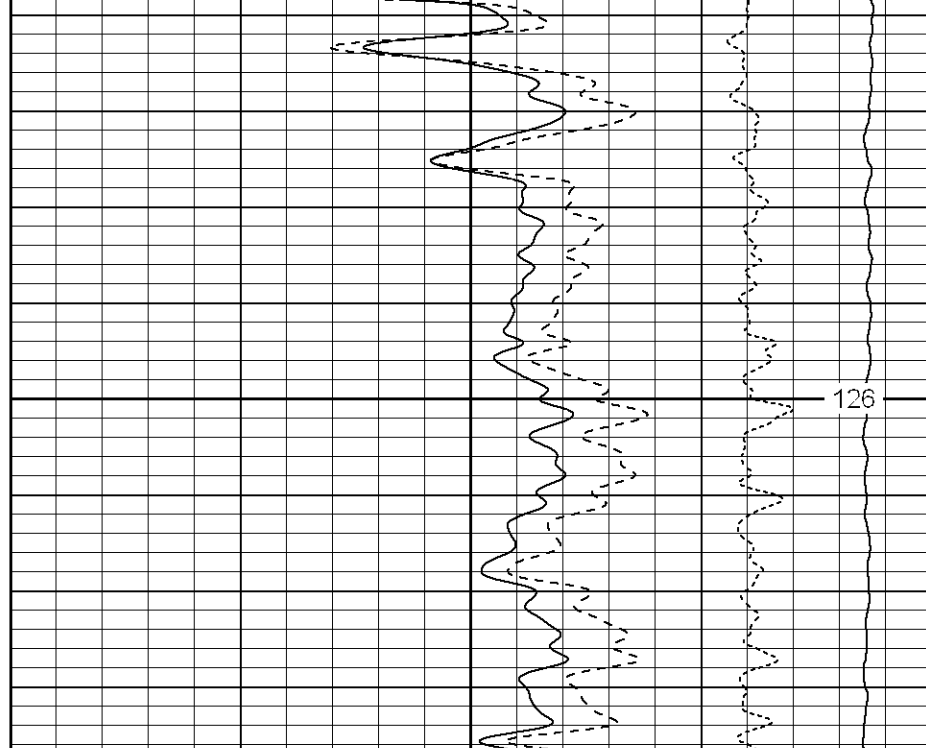


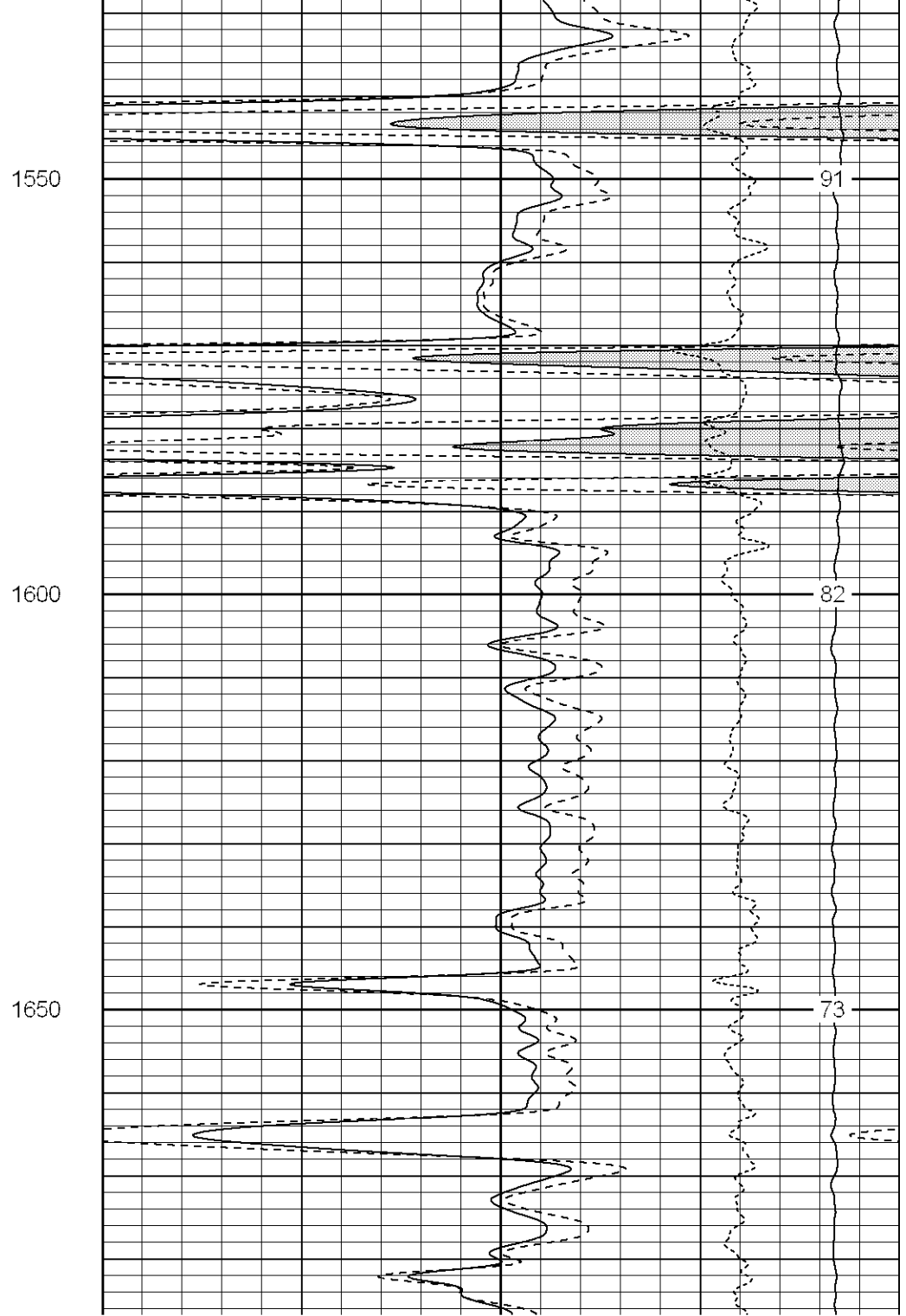
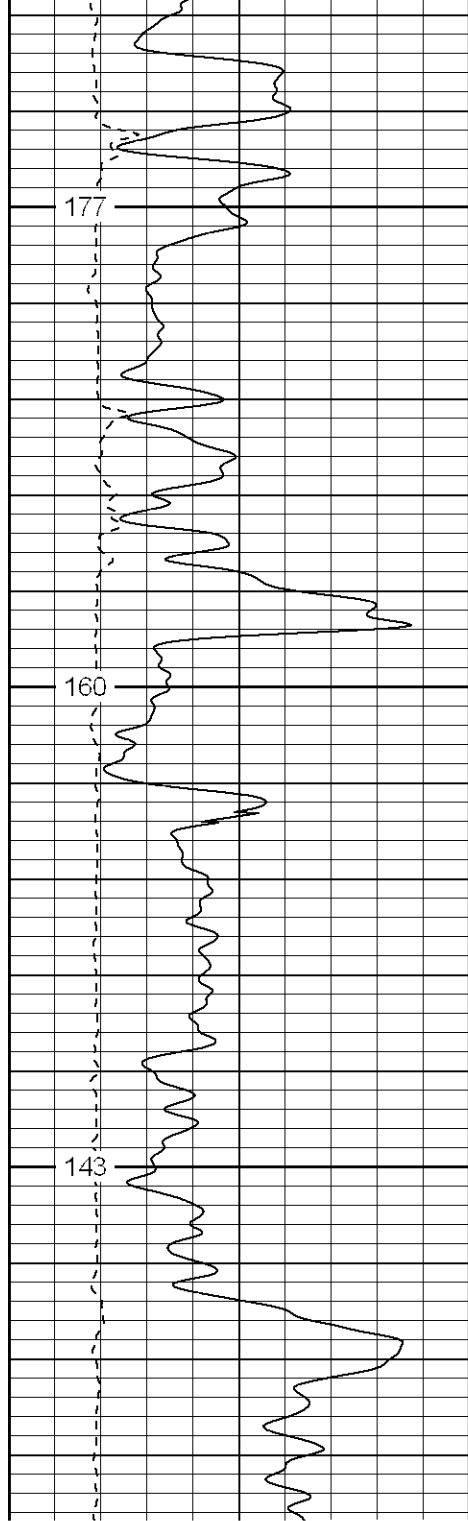
206

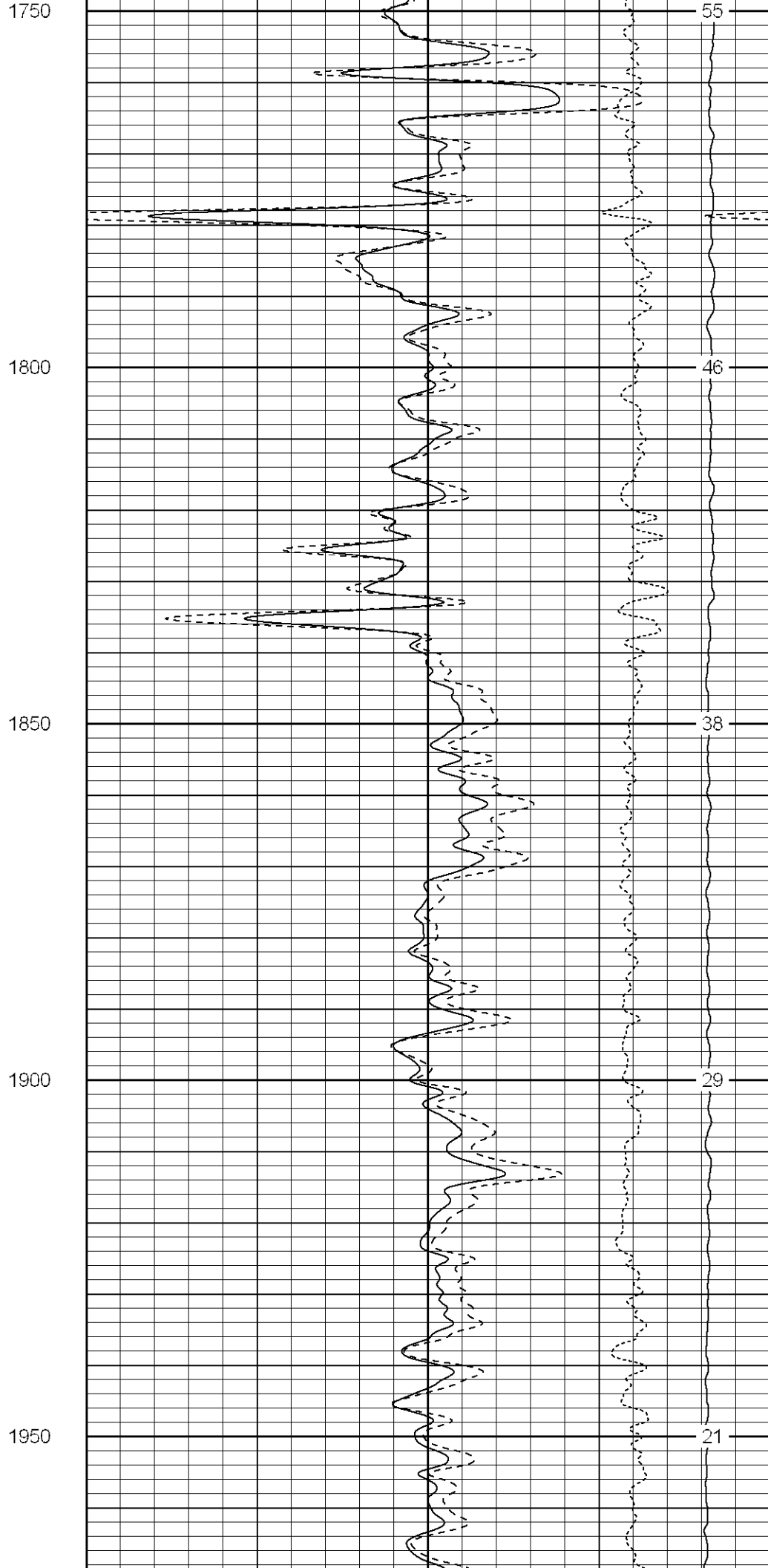
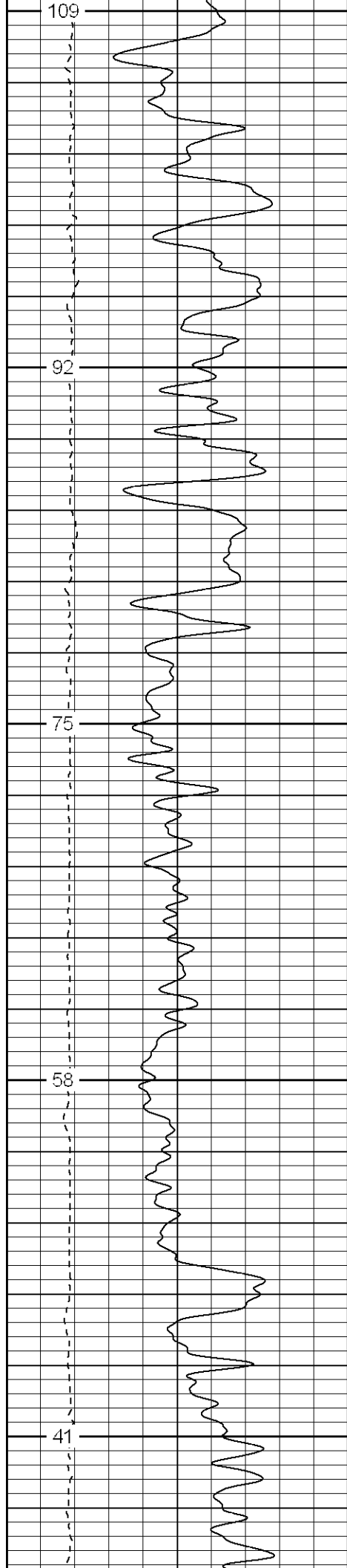


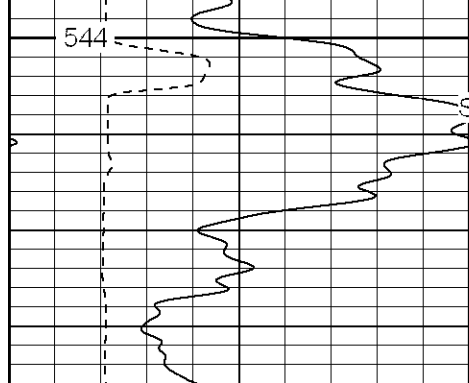


1350

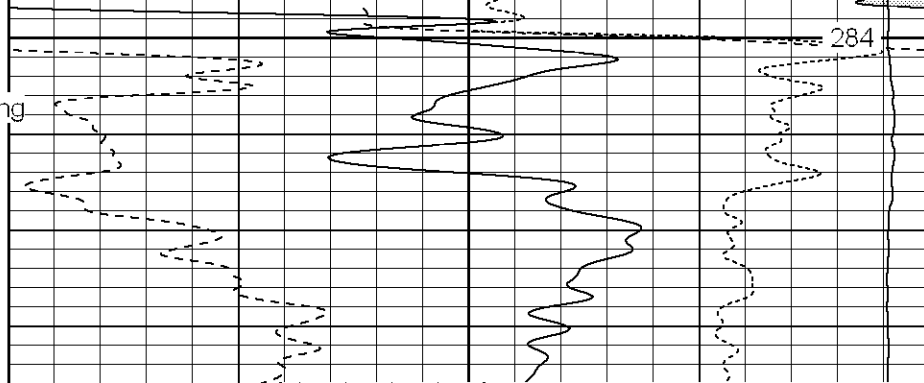


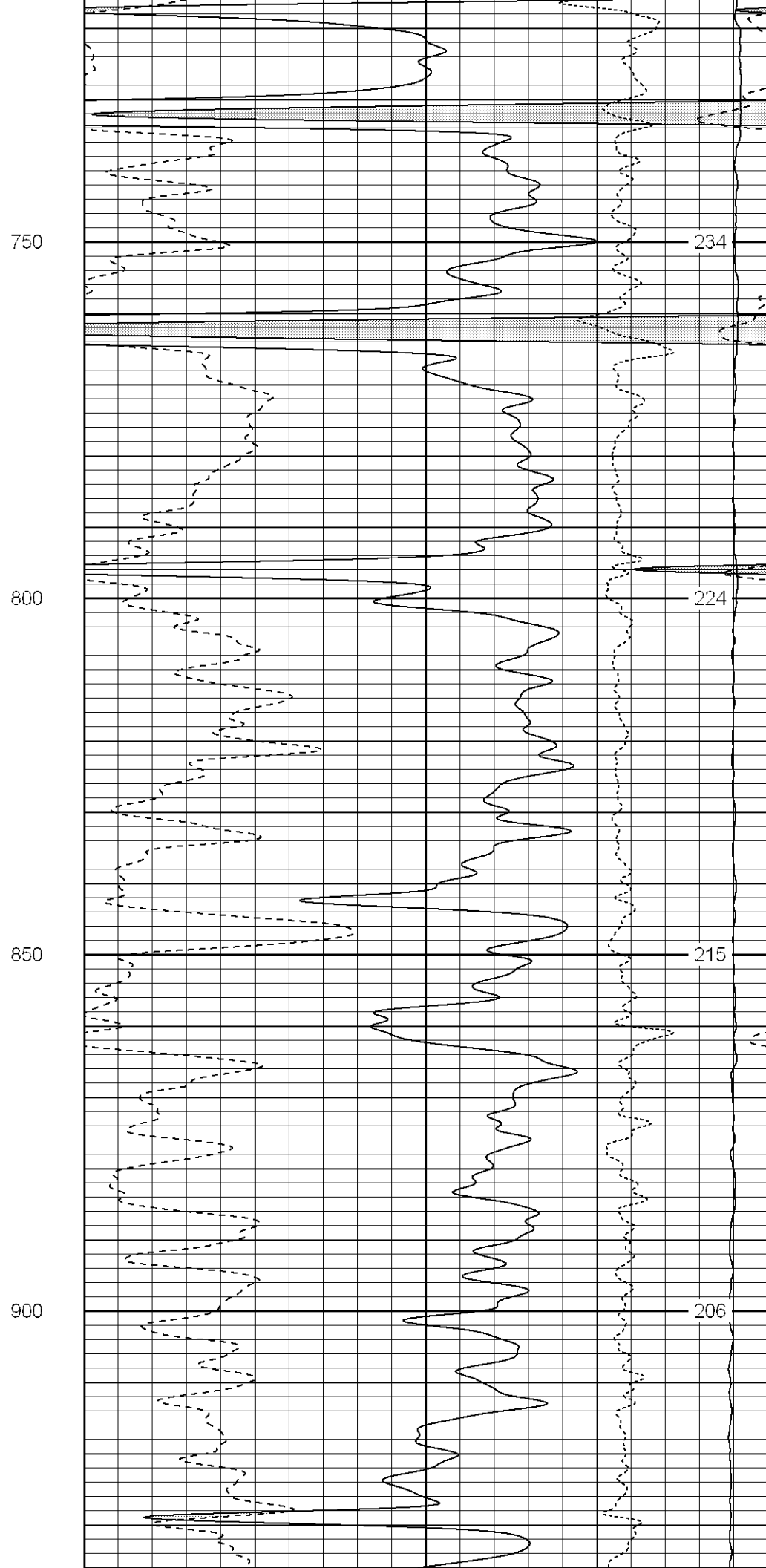
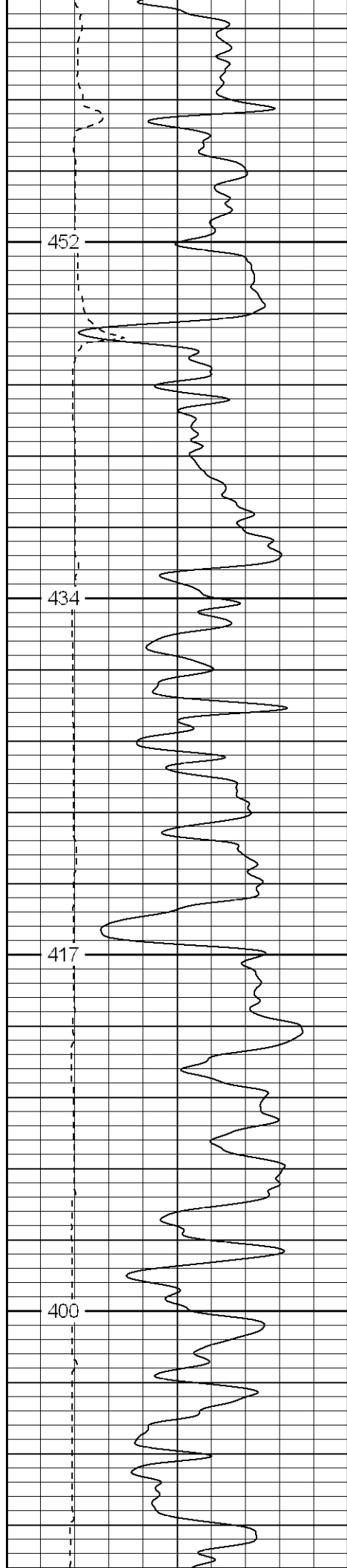


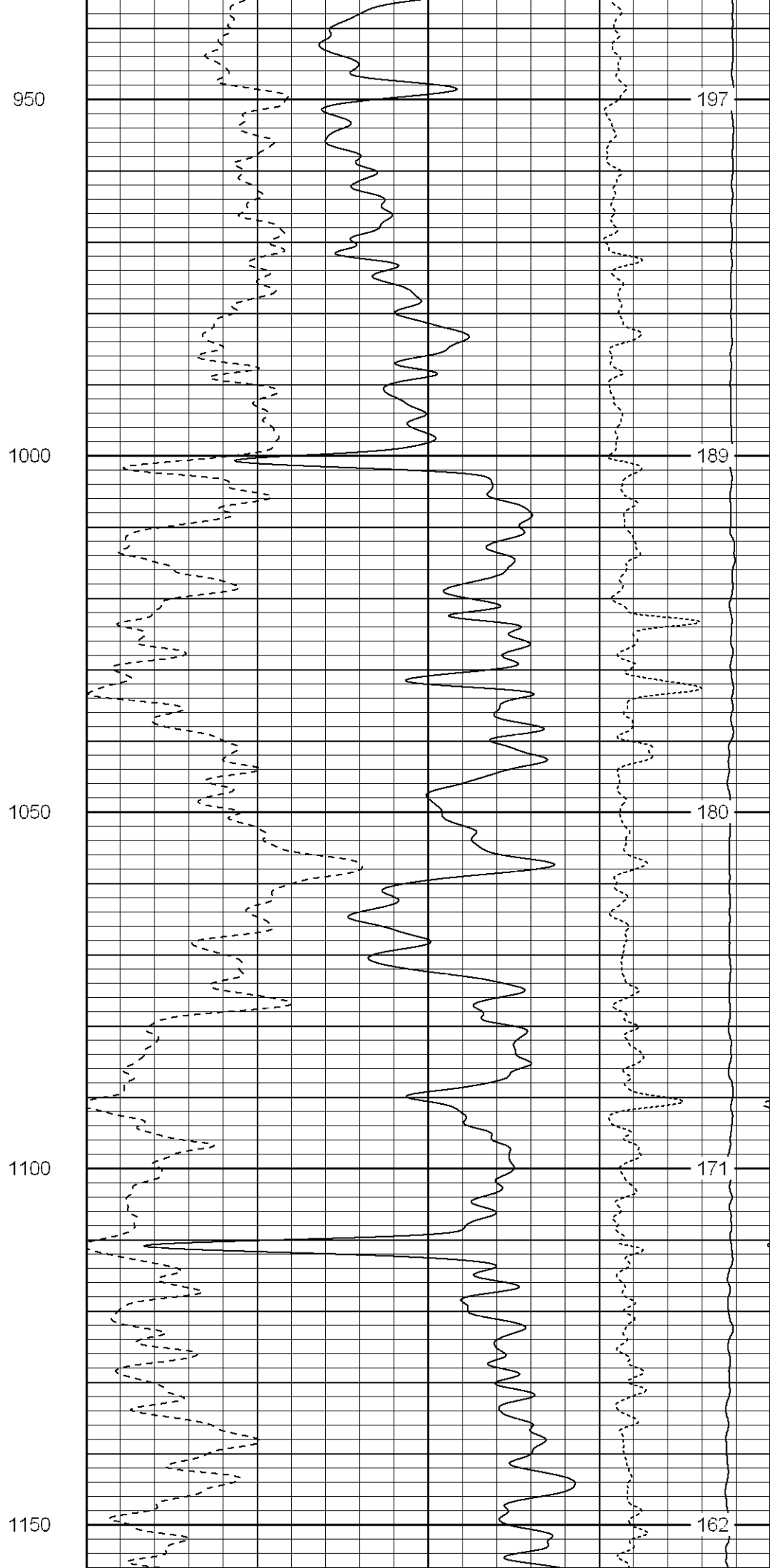
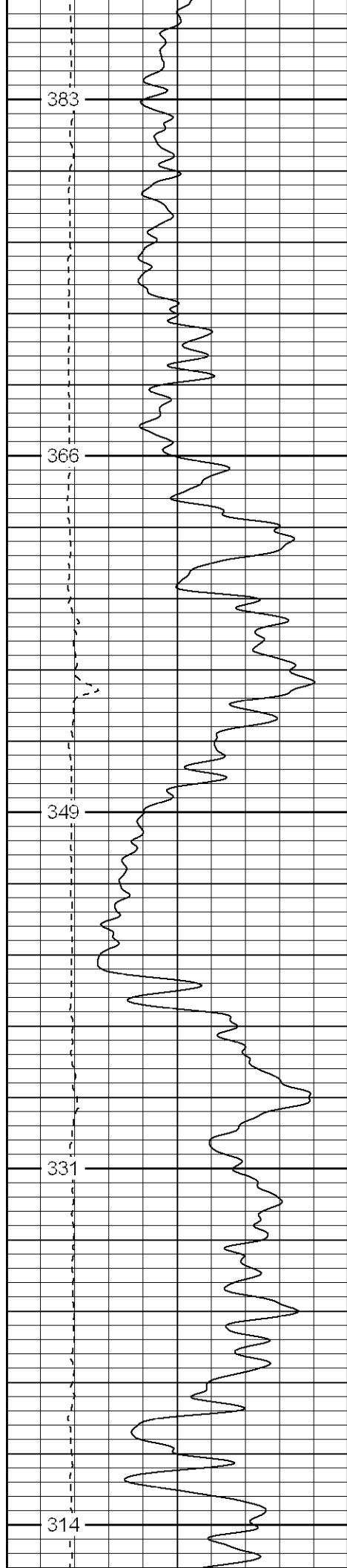


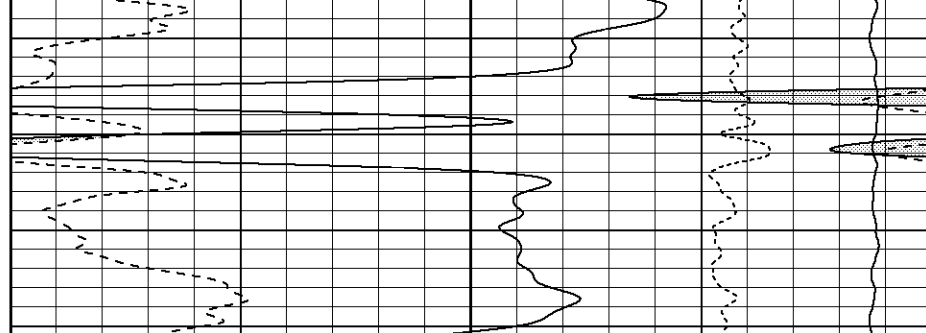
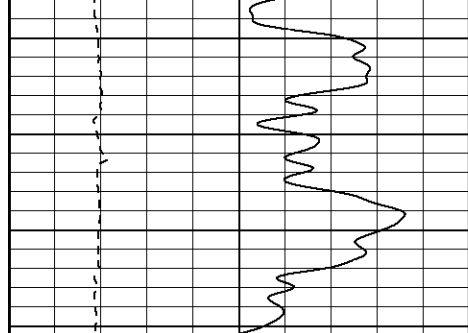


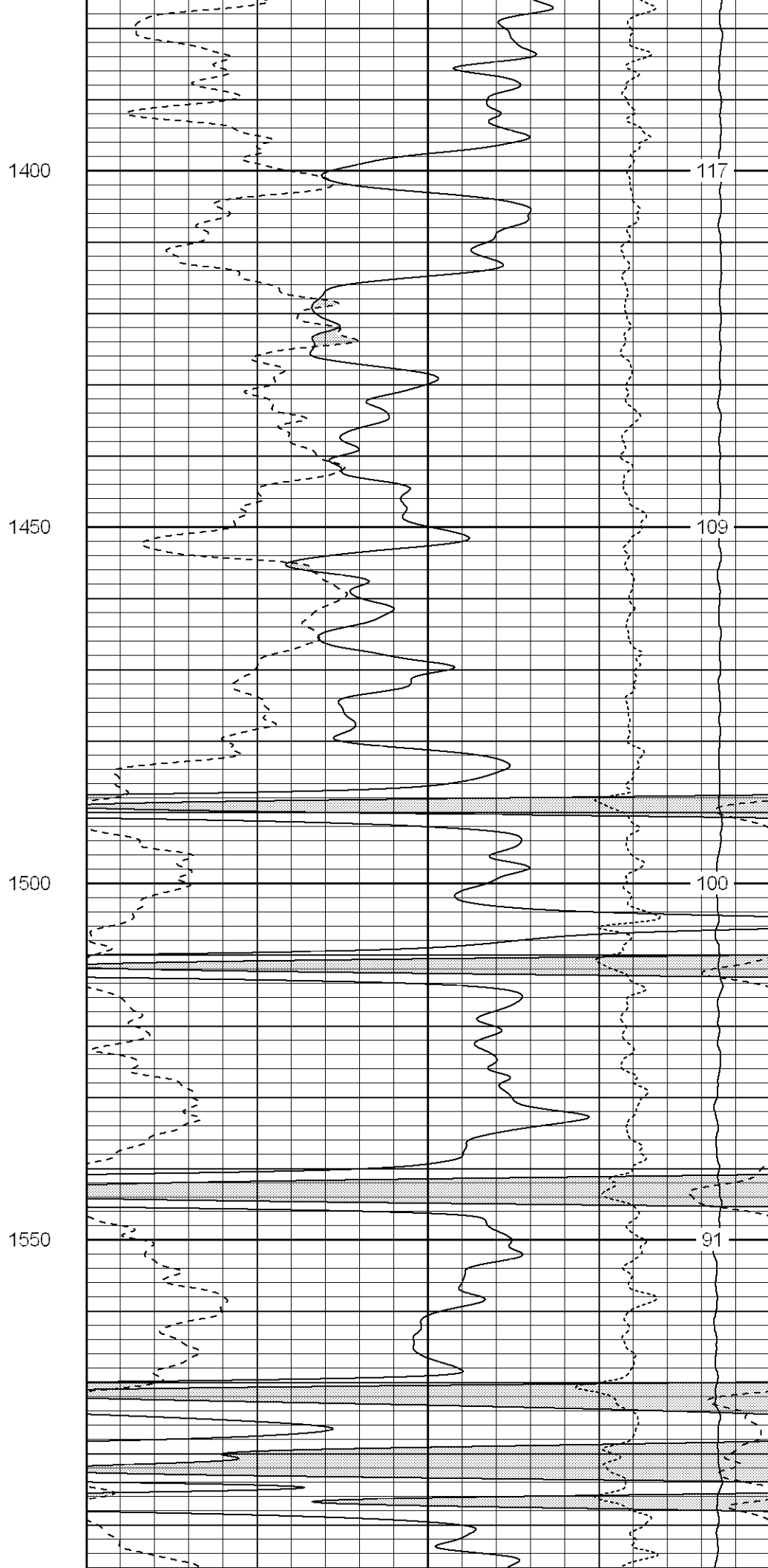
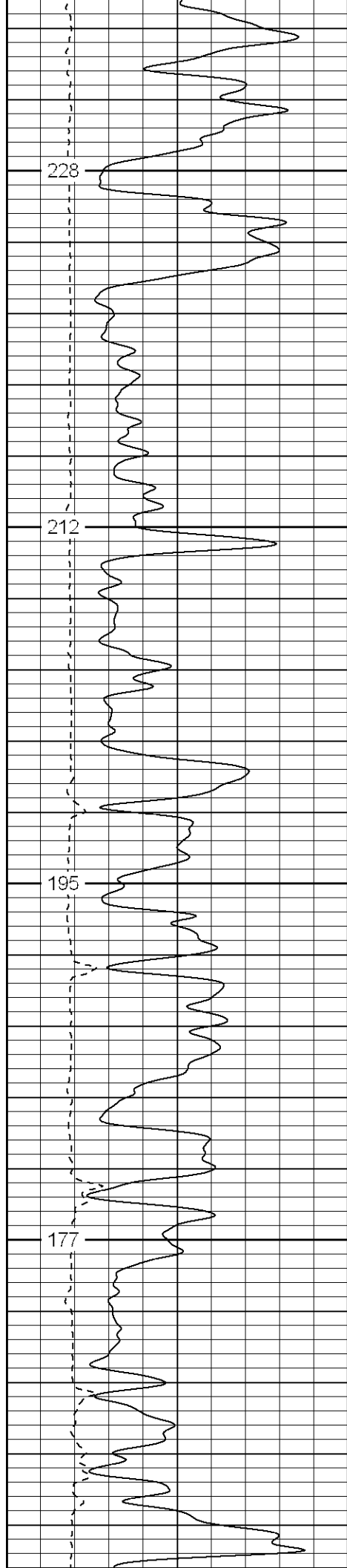
500
↑
Surface Casing

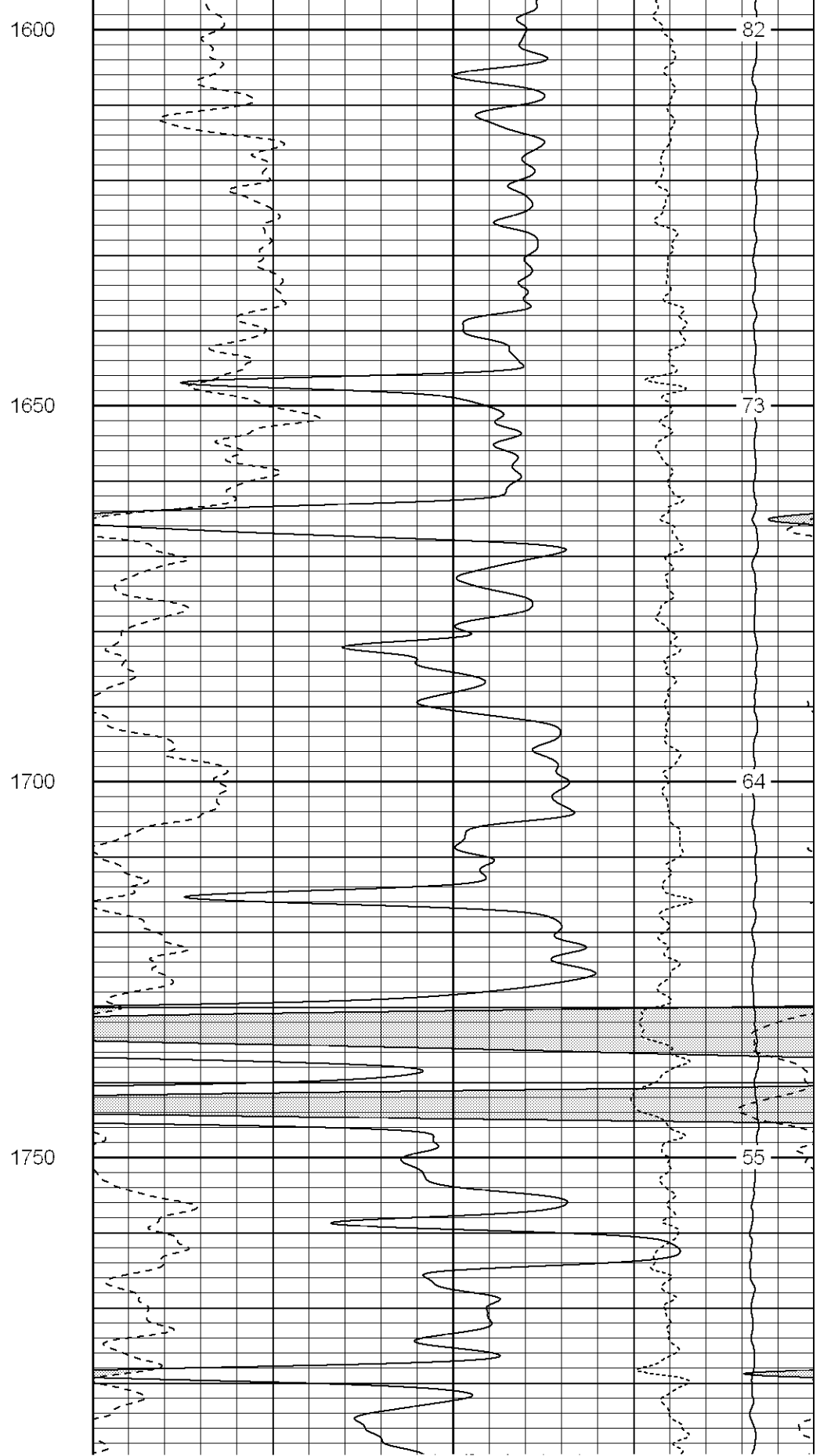
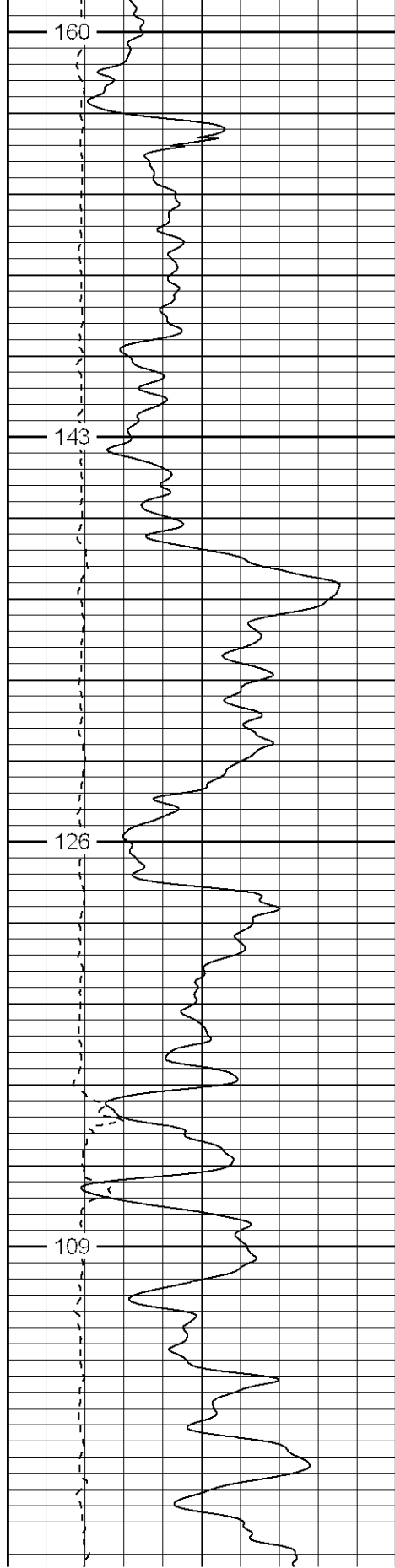


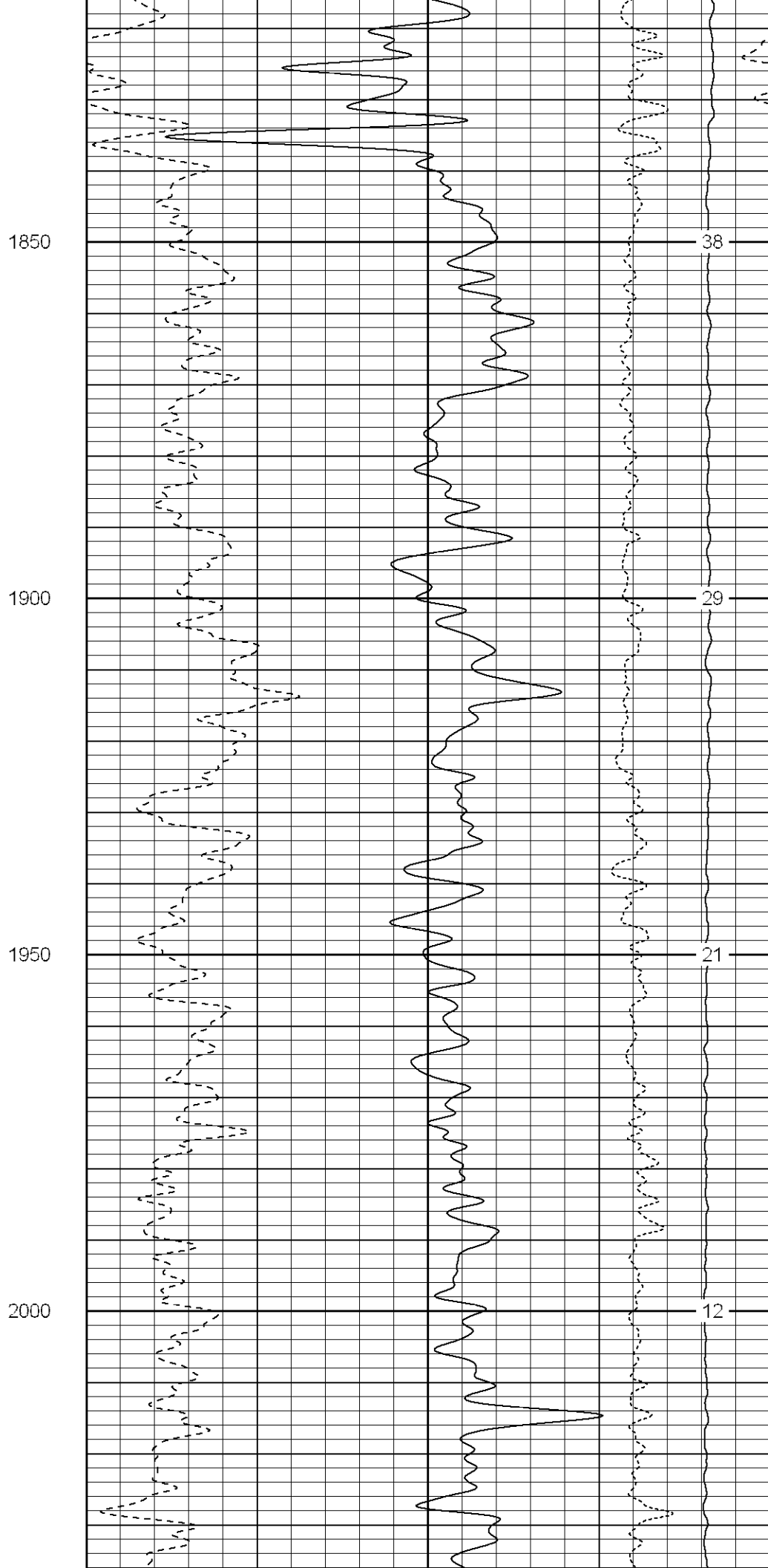
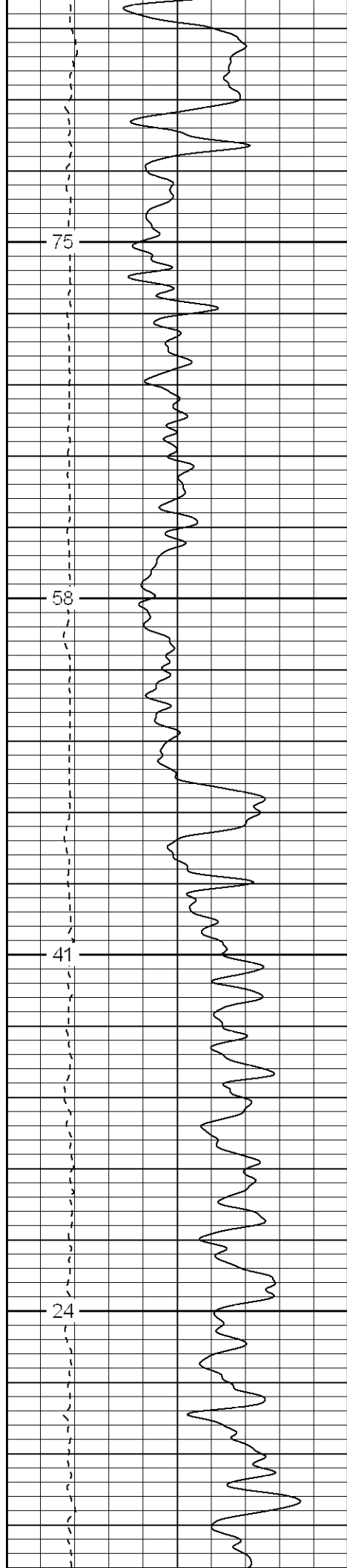


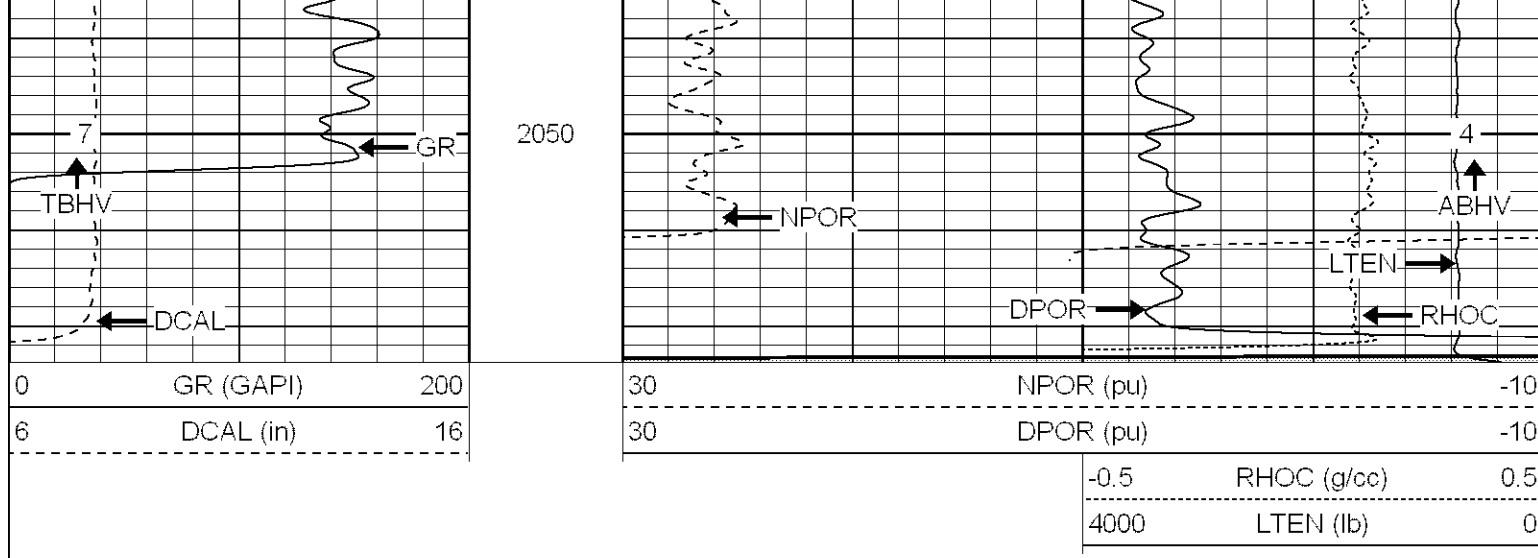












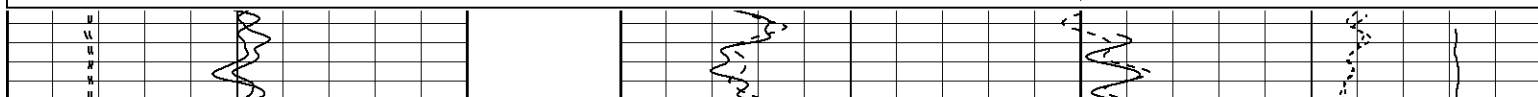
SUPERIOR

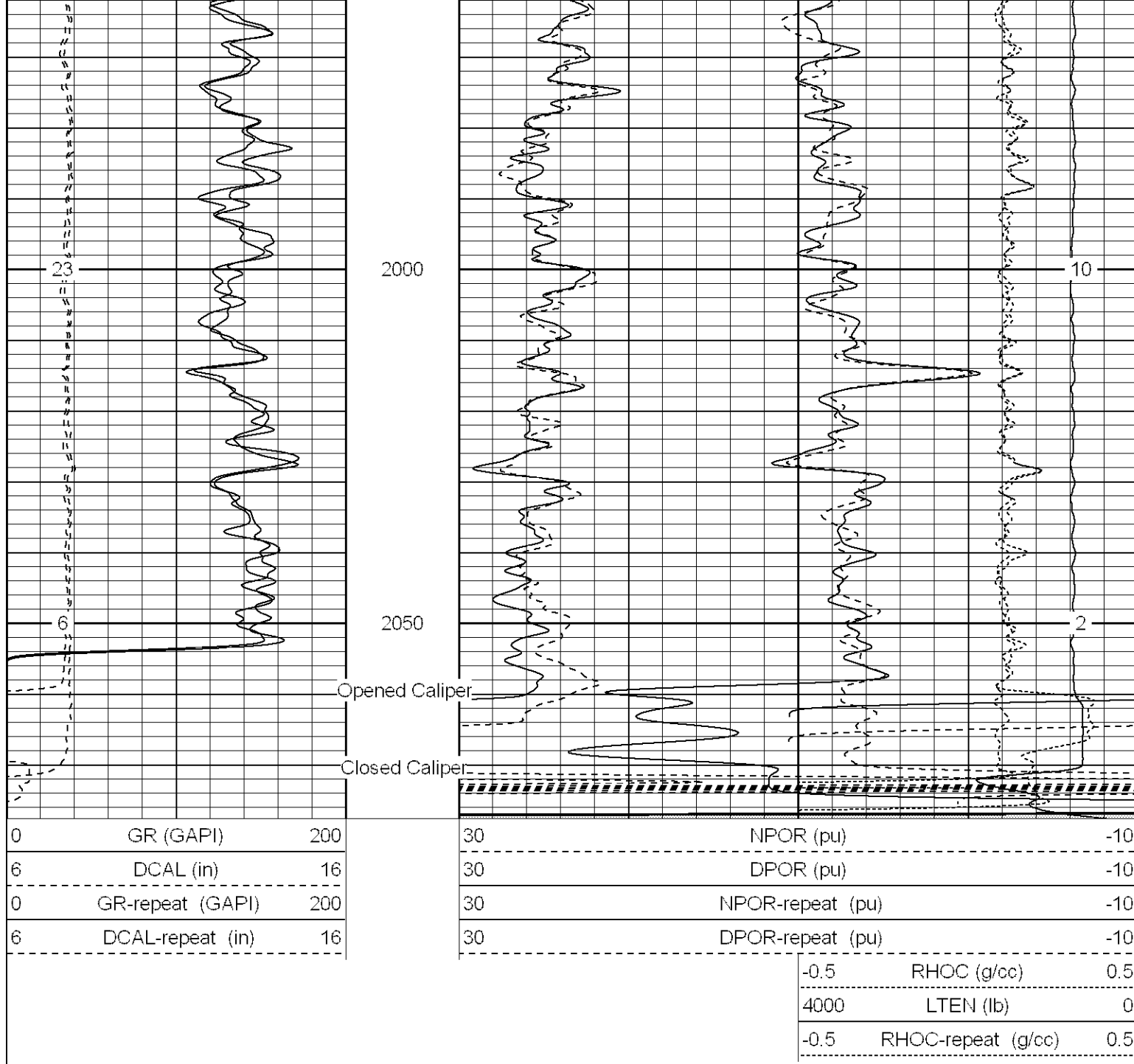
Black Lick, Pa.
Mercer, Pa.
Wooster, Oh.
Cleveland, Ok.
Trinidad, Co.

Repeat Section

Database File: xtoac1914.db
Dataset Pathname: pass3.1
Presentation Format: cdnl
Dataset Creation: Thu Jan 25 23:59:56 2007 by Calc Open-Cased 060407
Charted by: Depth in Feet scaled 1:240

| | | | | | | |
|---|------------------|-----|----|------------------|--------------------|-----|
| 0 | GR (GAPI) | 200 | 30 | NPOR (pu) | -10 | |
| 6 | DCAL (in) | 16 | 30 | DPOR (pu) | -10 | |
| 0 | GR-repeat (GAPI) | 200 | 30 | NPOR-repeat (pu) | -10 | |
| 6 | DCAL-repeat (in) | 16 | 30 | DPOR-repeat (pu) | -10 | |
| | | | | -0.5 | RHOC (g/cc) | 0.5 |
| | | | | 4000 | LTEN (lb) | 0 |
| | | | | -0.5 | RHOC-repeat (g/cc) | 0.5 |





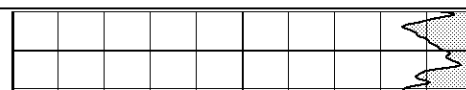
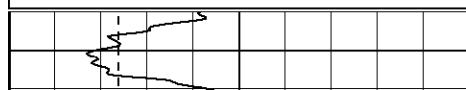
SUPERIOR

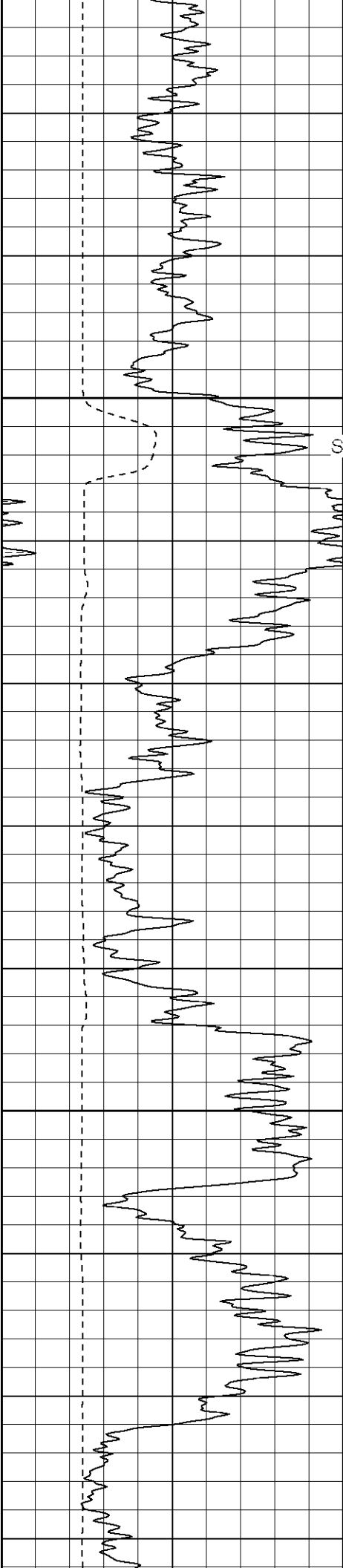
Black Lick, Pa.
Mercer, Pa.
Wooster, Oh.
Cleveland, Ok.
Trinidad, Co.

High Resolution Pass

Database File: xtoac1914.db
Dataset Pathname: pass4.2
Presentation Format: cdlhr
Dataset Creation: Fri Jan 26 11:08:45 2007 by Calc Open-Cased 060407
Charted by: Depth in Feet scaled 1:120

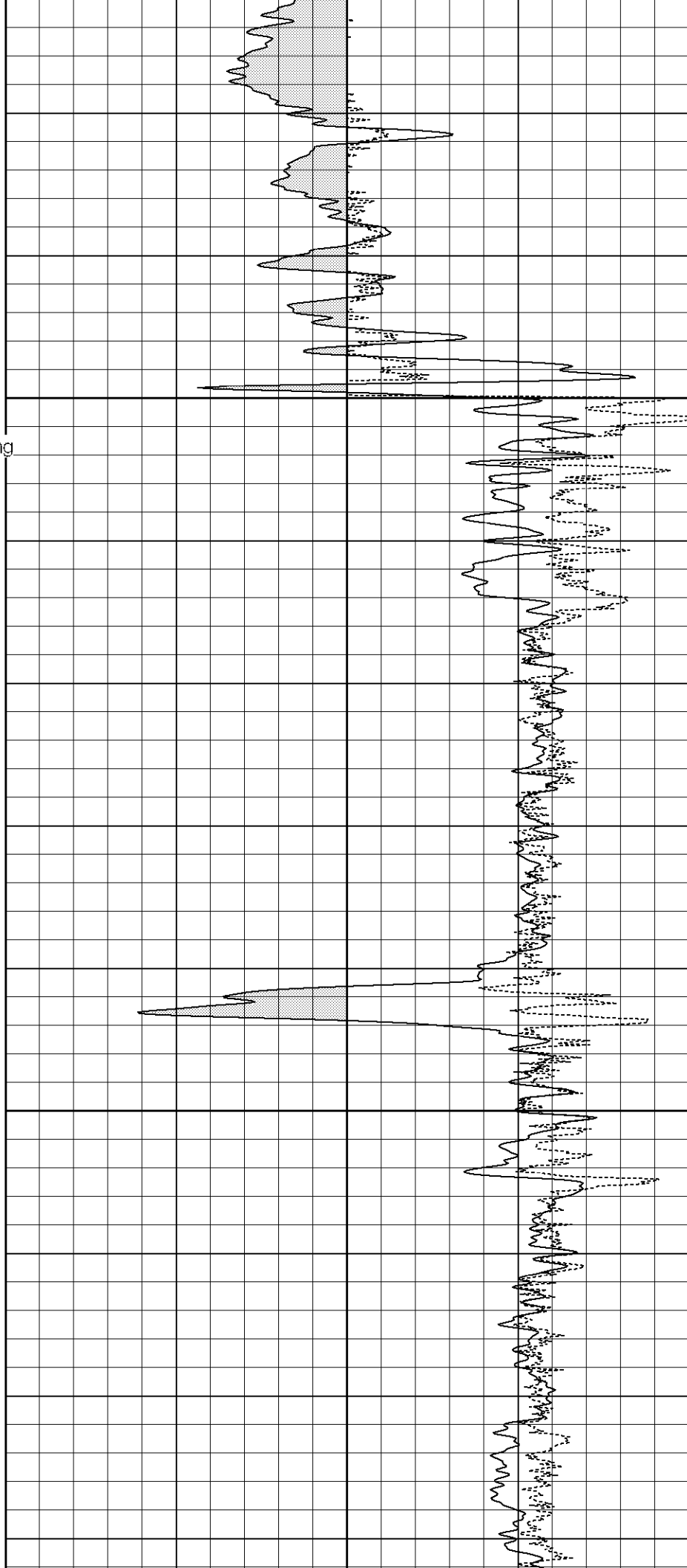
| | | | | | |
|---|-----------|-----|---|-------------|-----------------|
| 0 | GR (GAPI) | 200 | 1 | RHOB (g/cc) | 3 |
| 6 | DCAL (in) | 16 | | -0.5 | RHOC (g/cc) 0.5 |

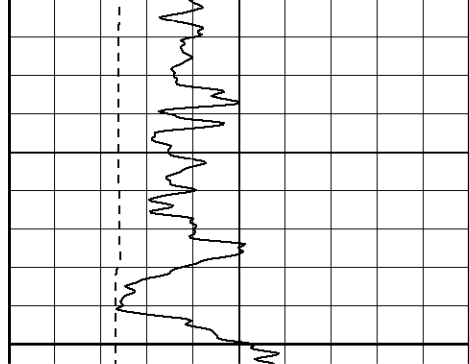




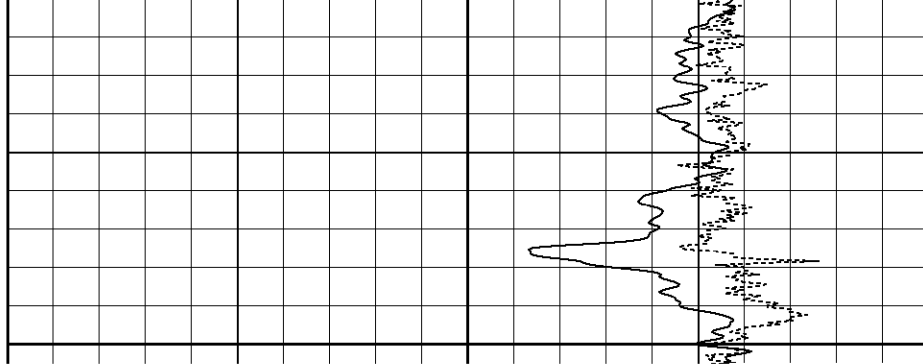
500
↑
Surface Casing

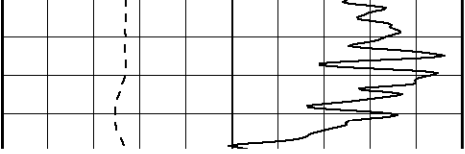
550



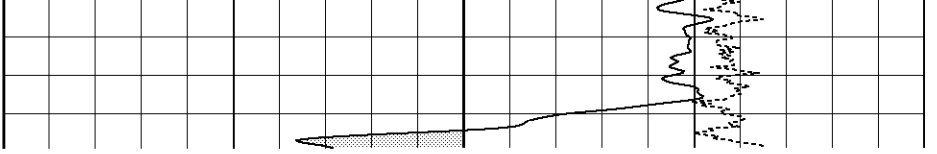


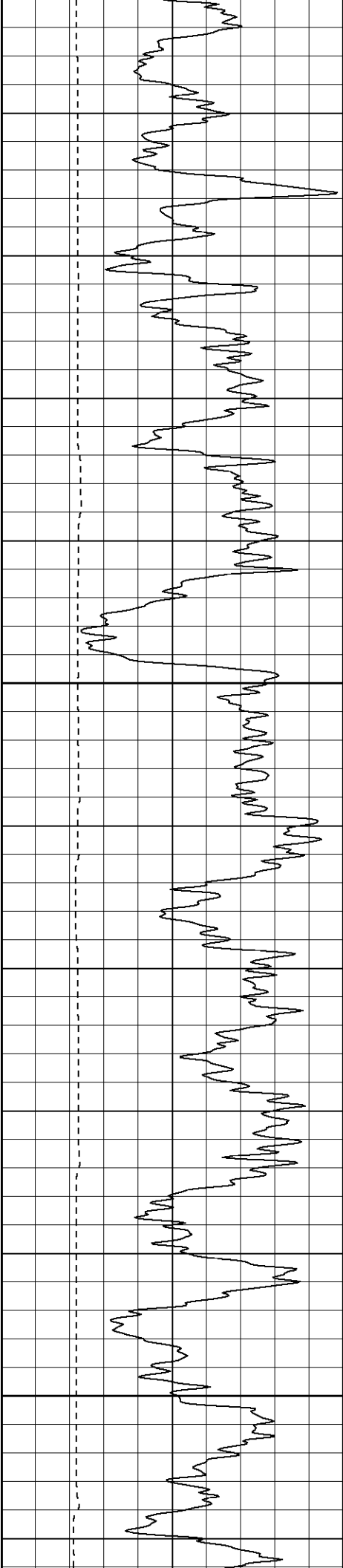
600





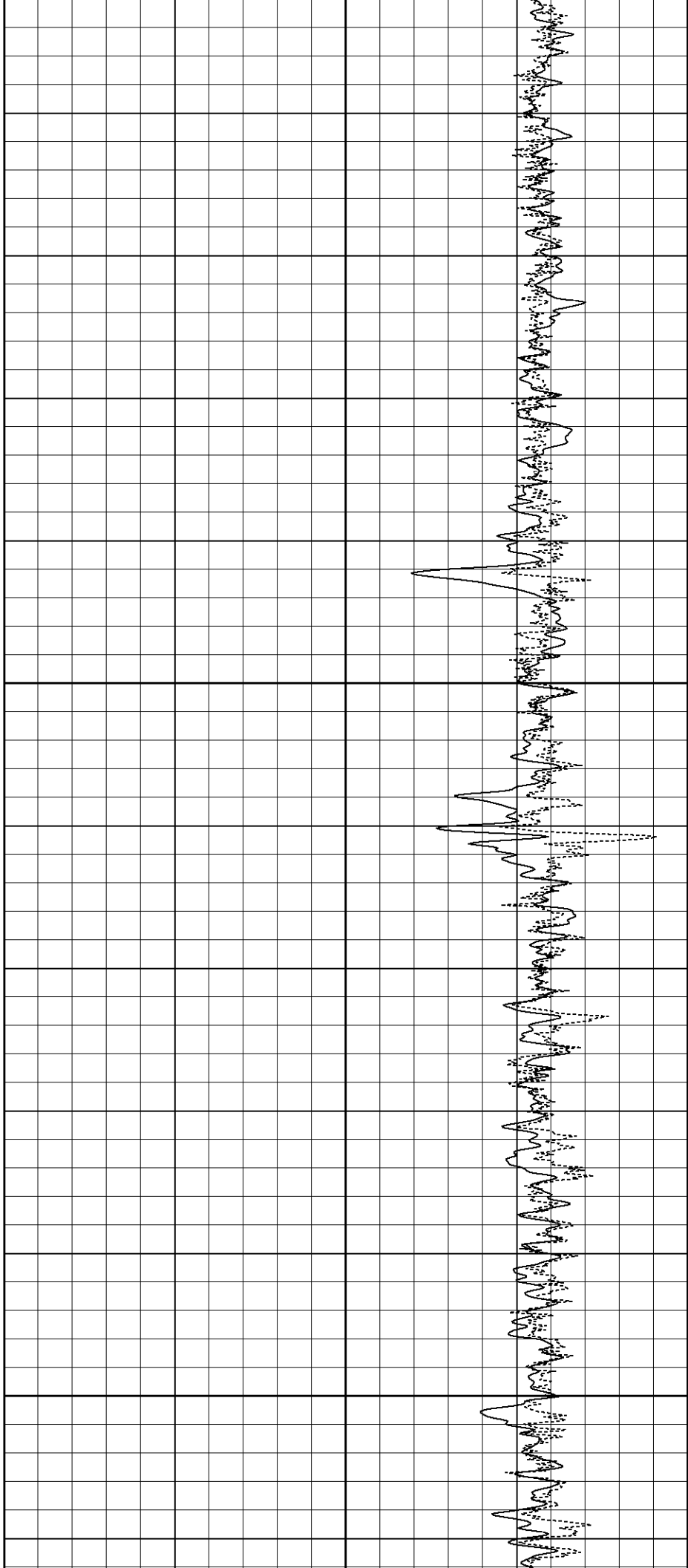
700

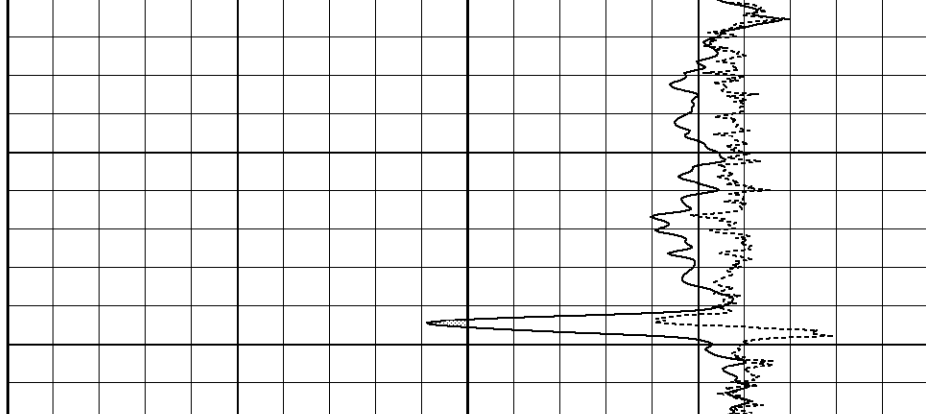
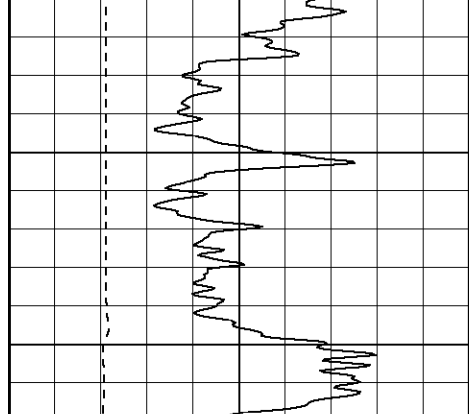


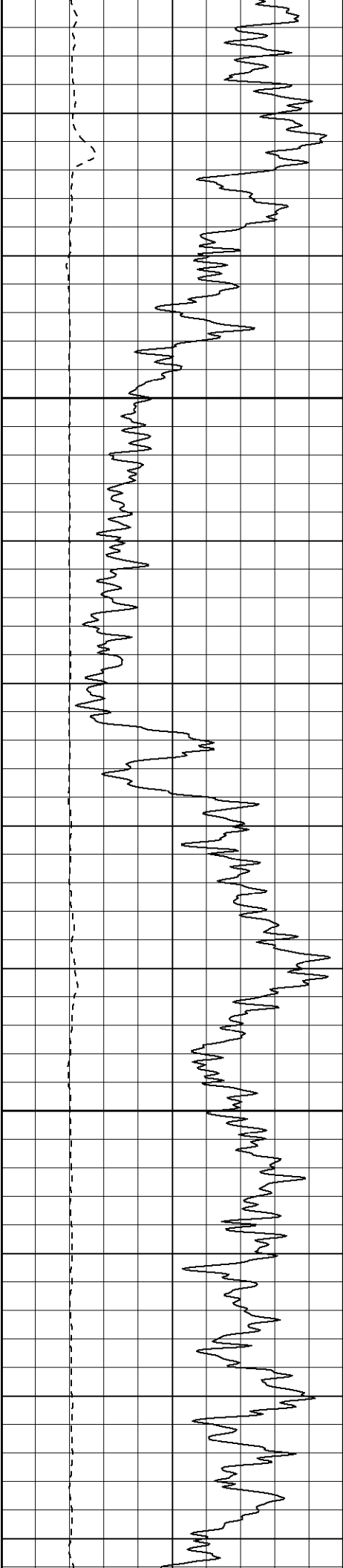


850

900

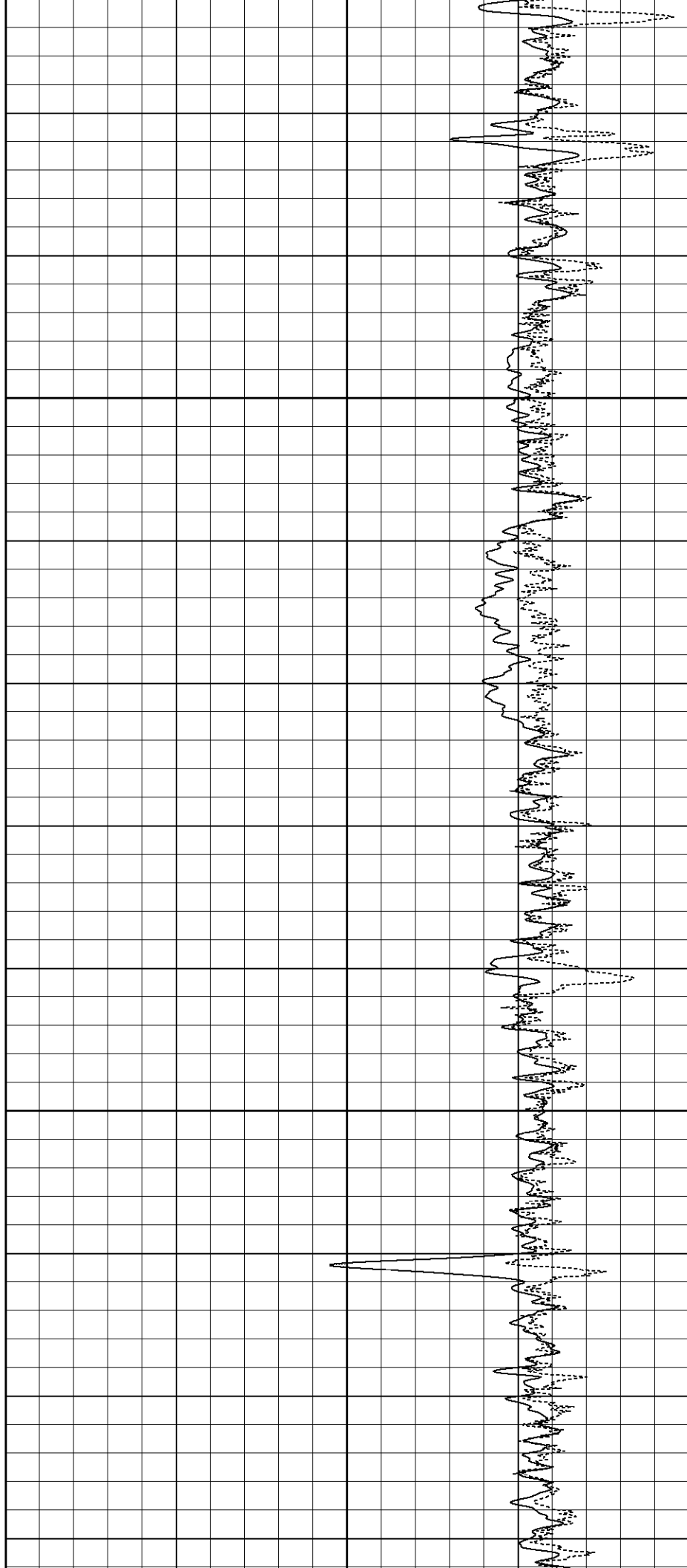






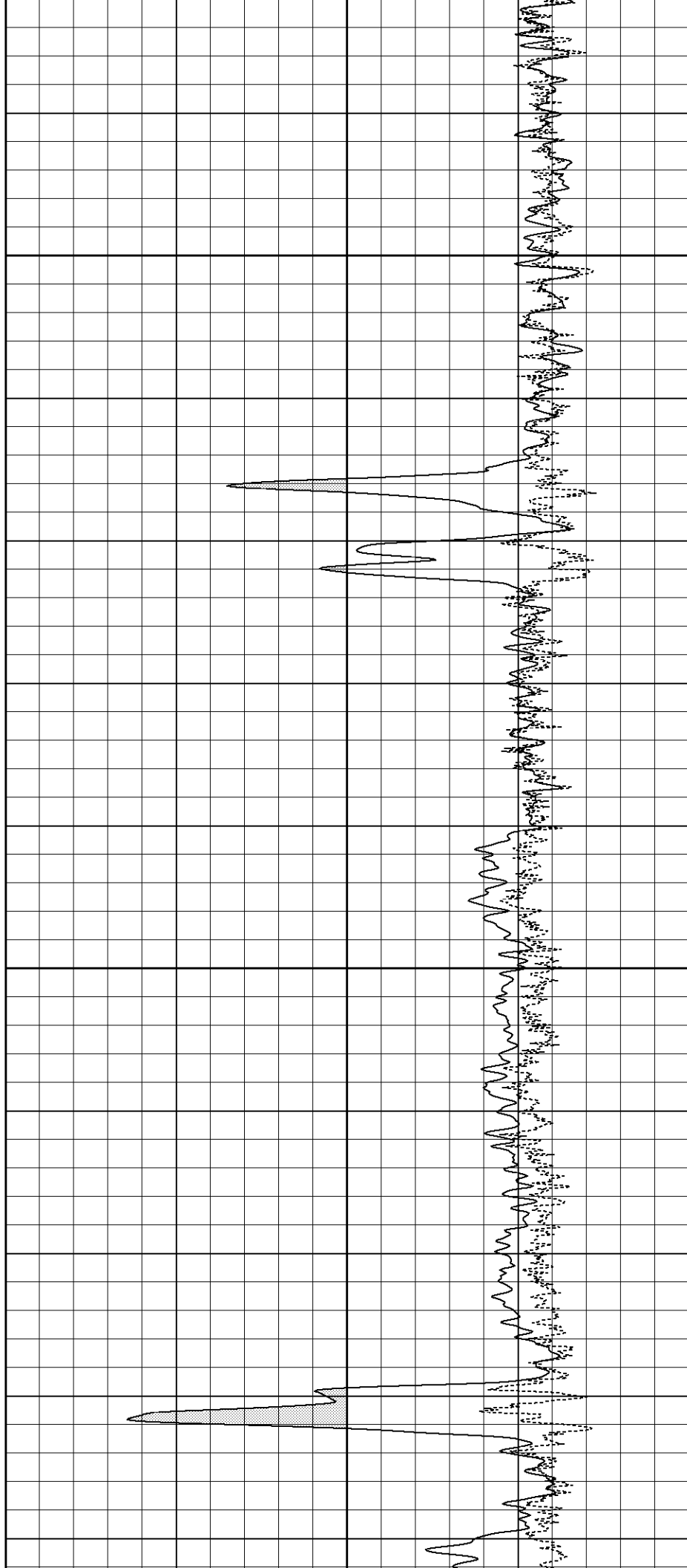
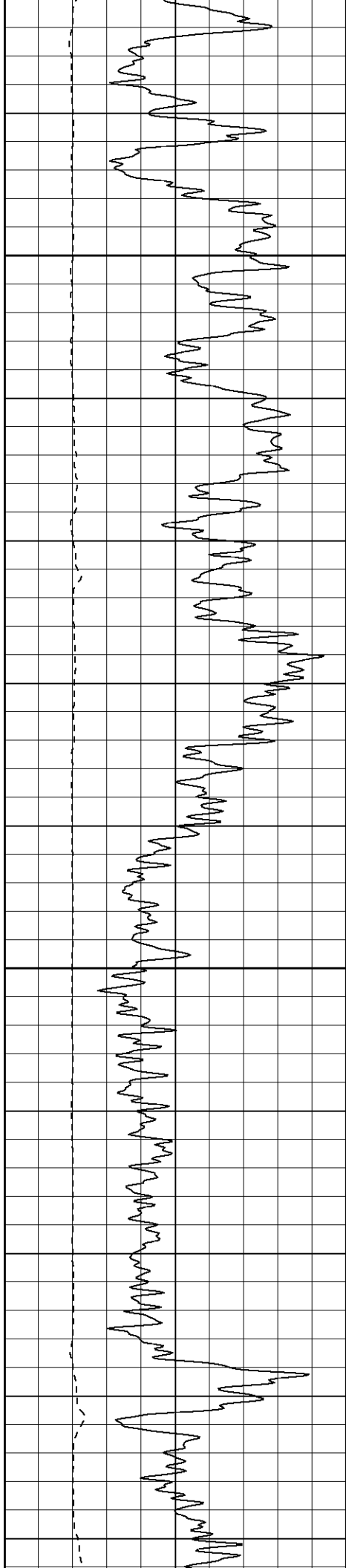
1050

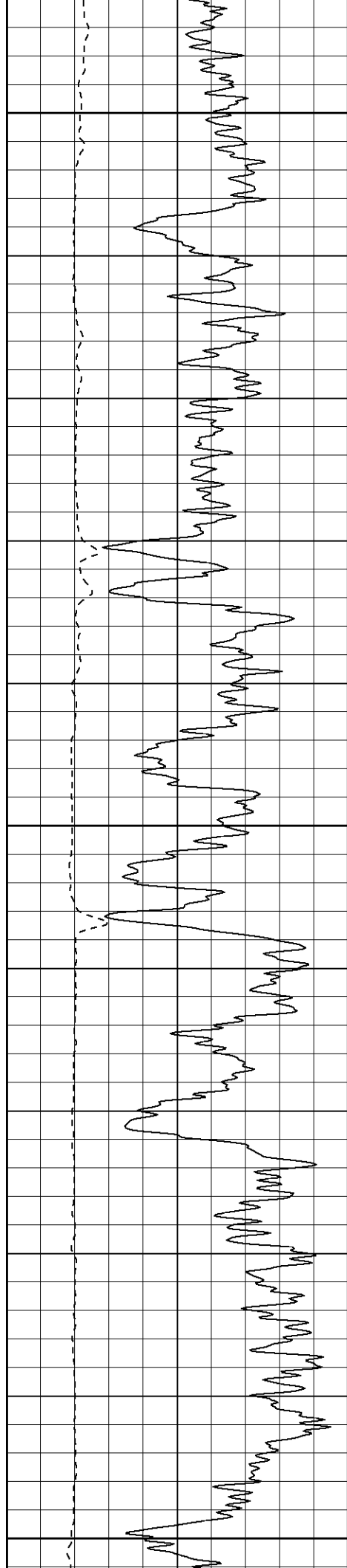
1100



1150

1200

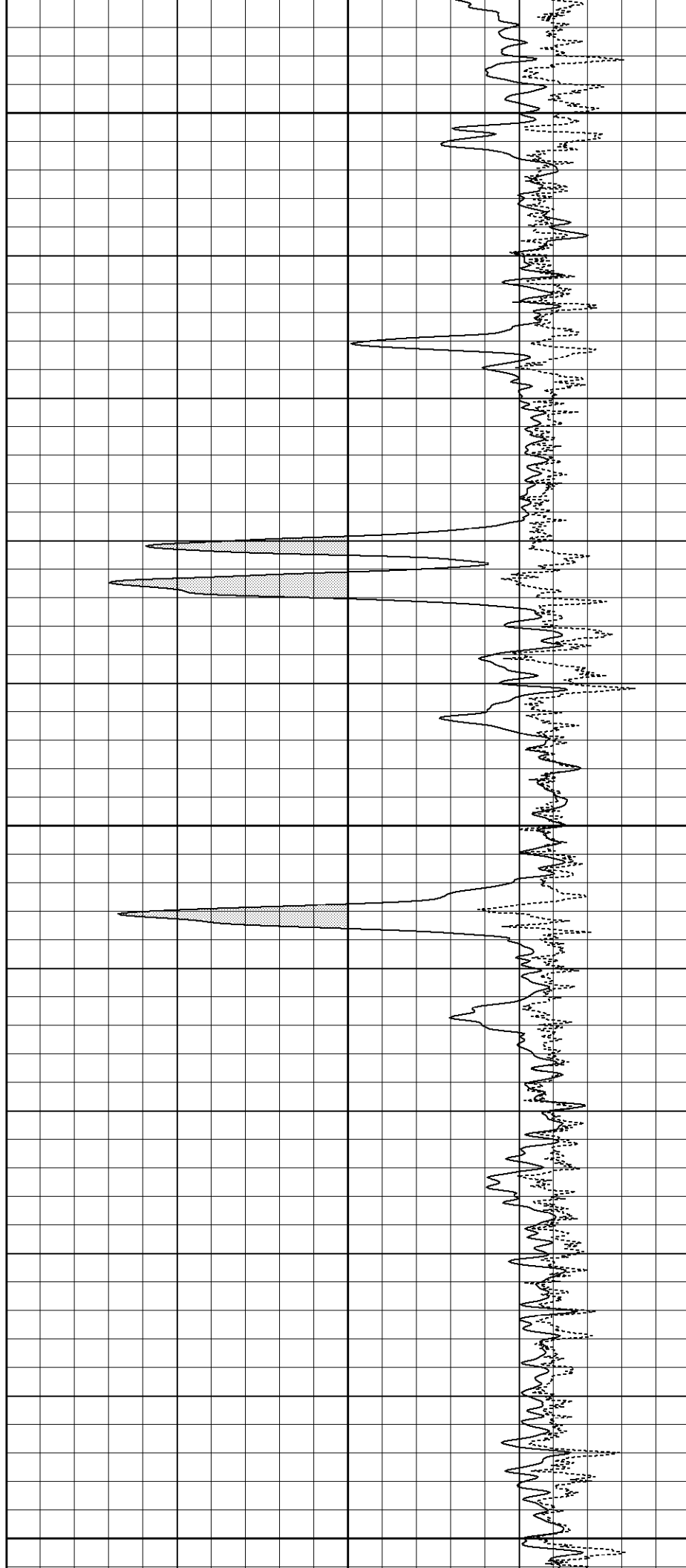


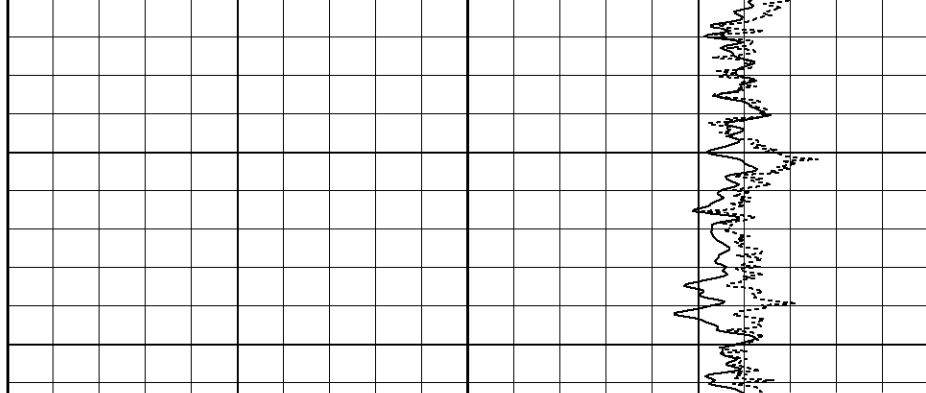
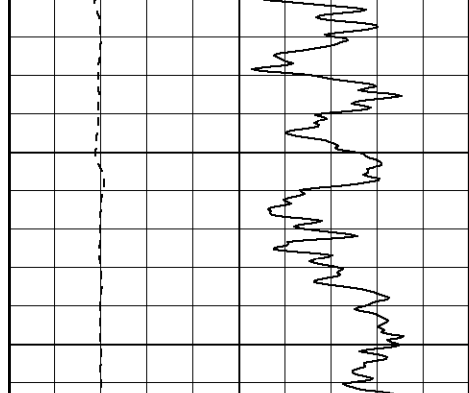


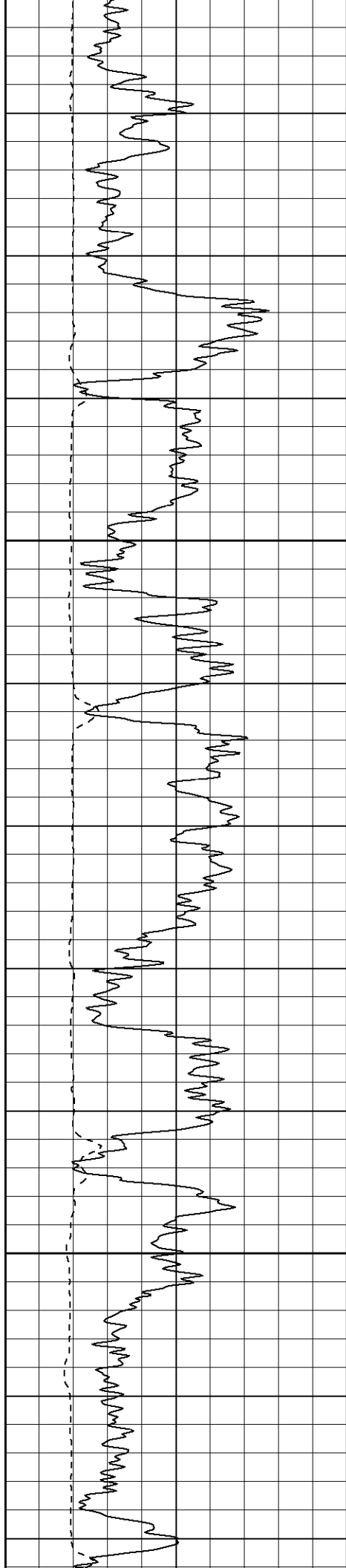
1250

1300

1350

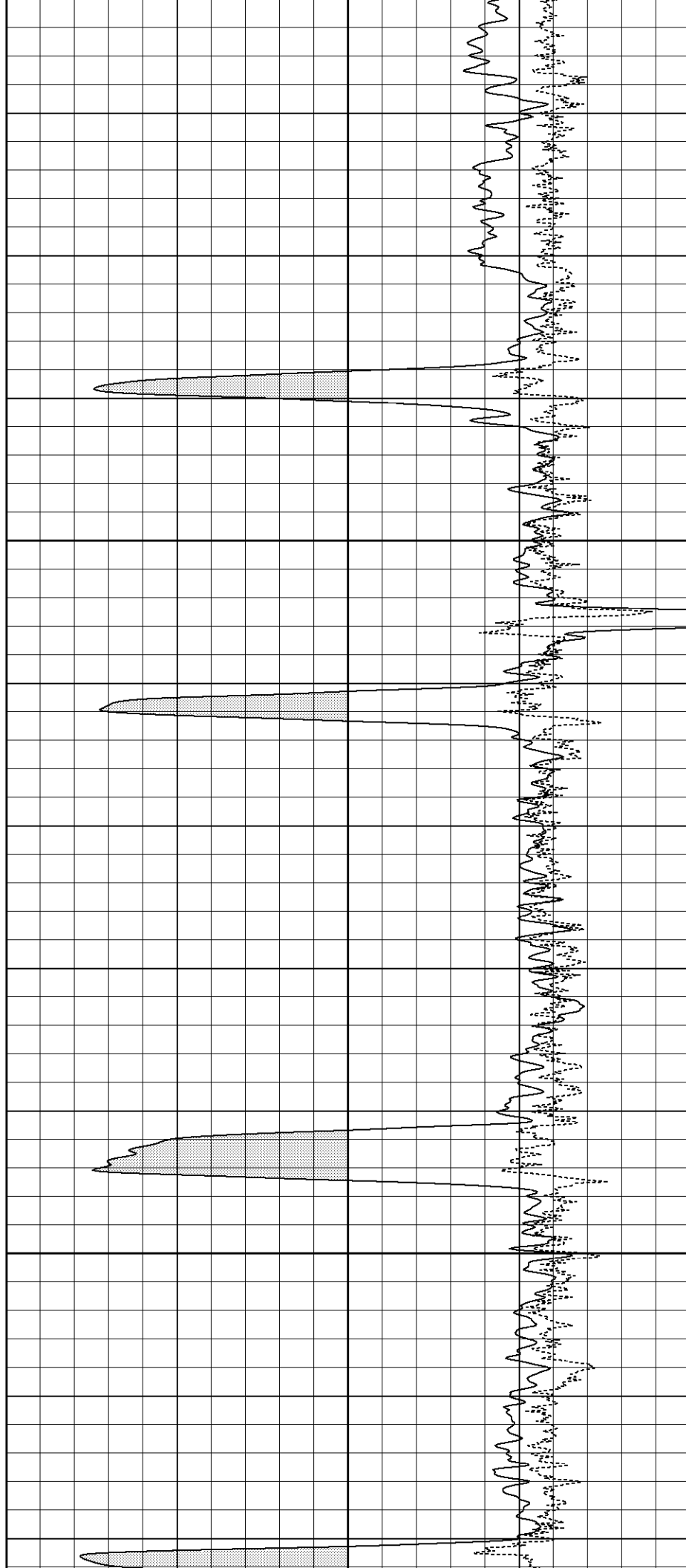


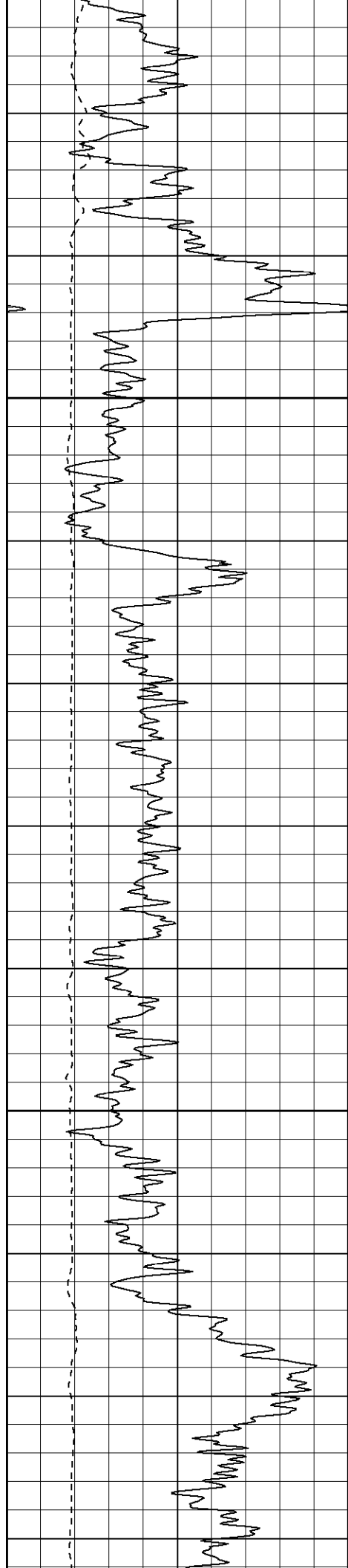




1500

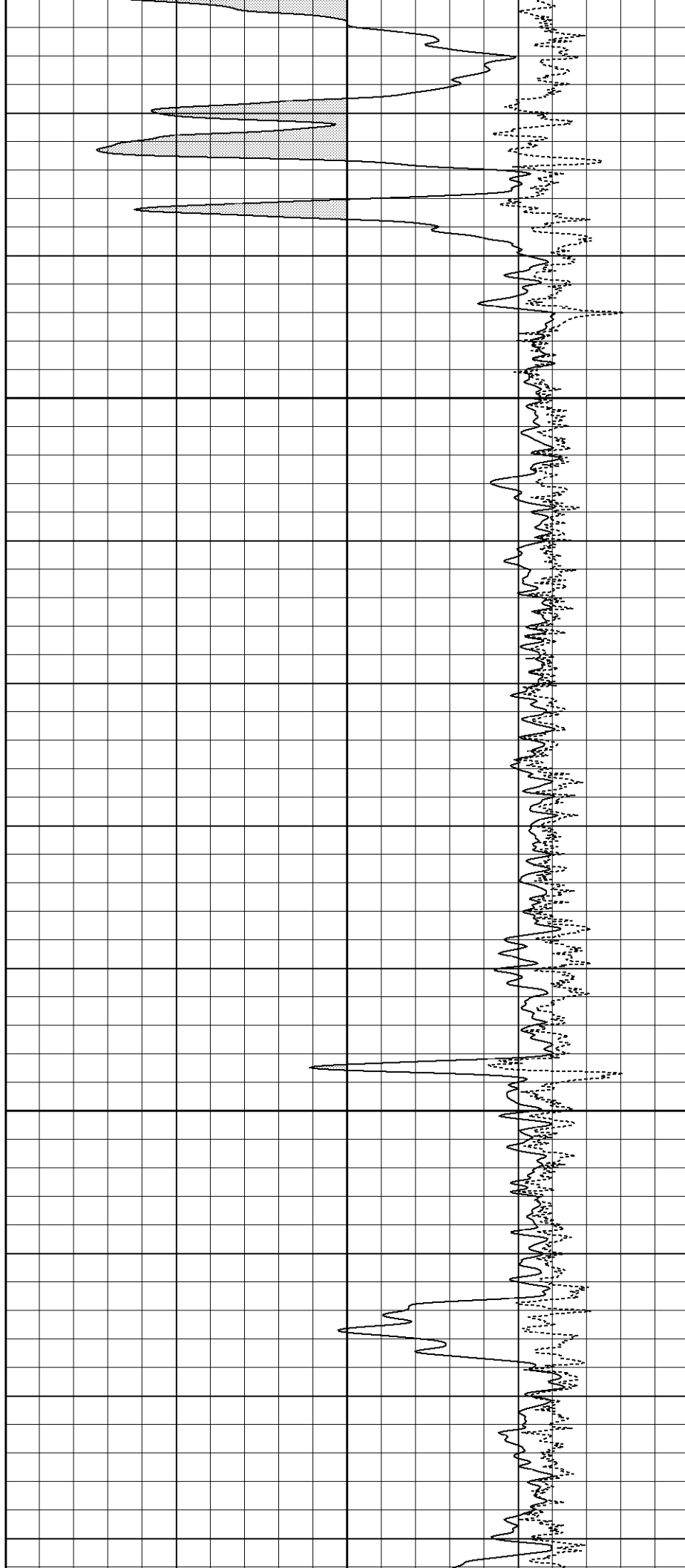
1550

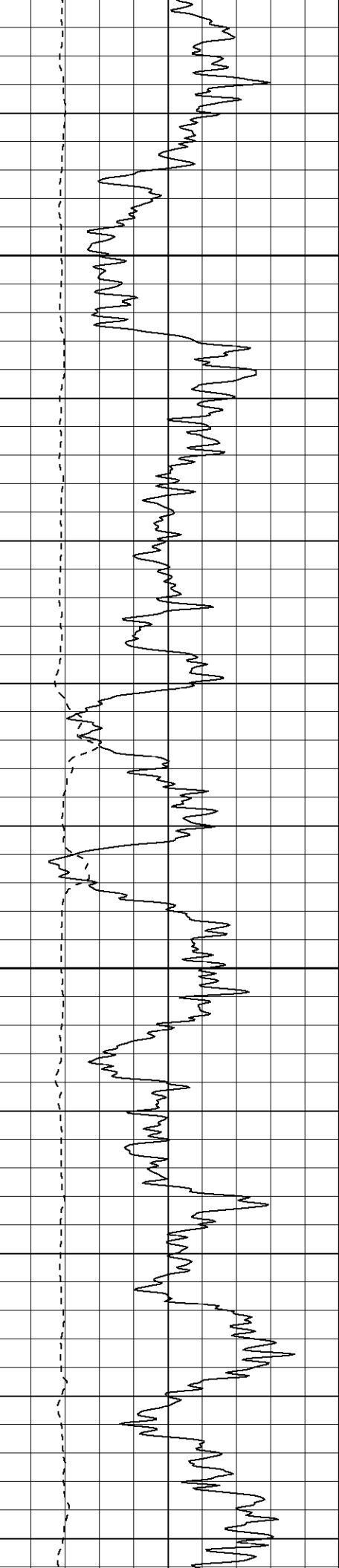




1600

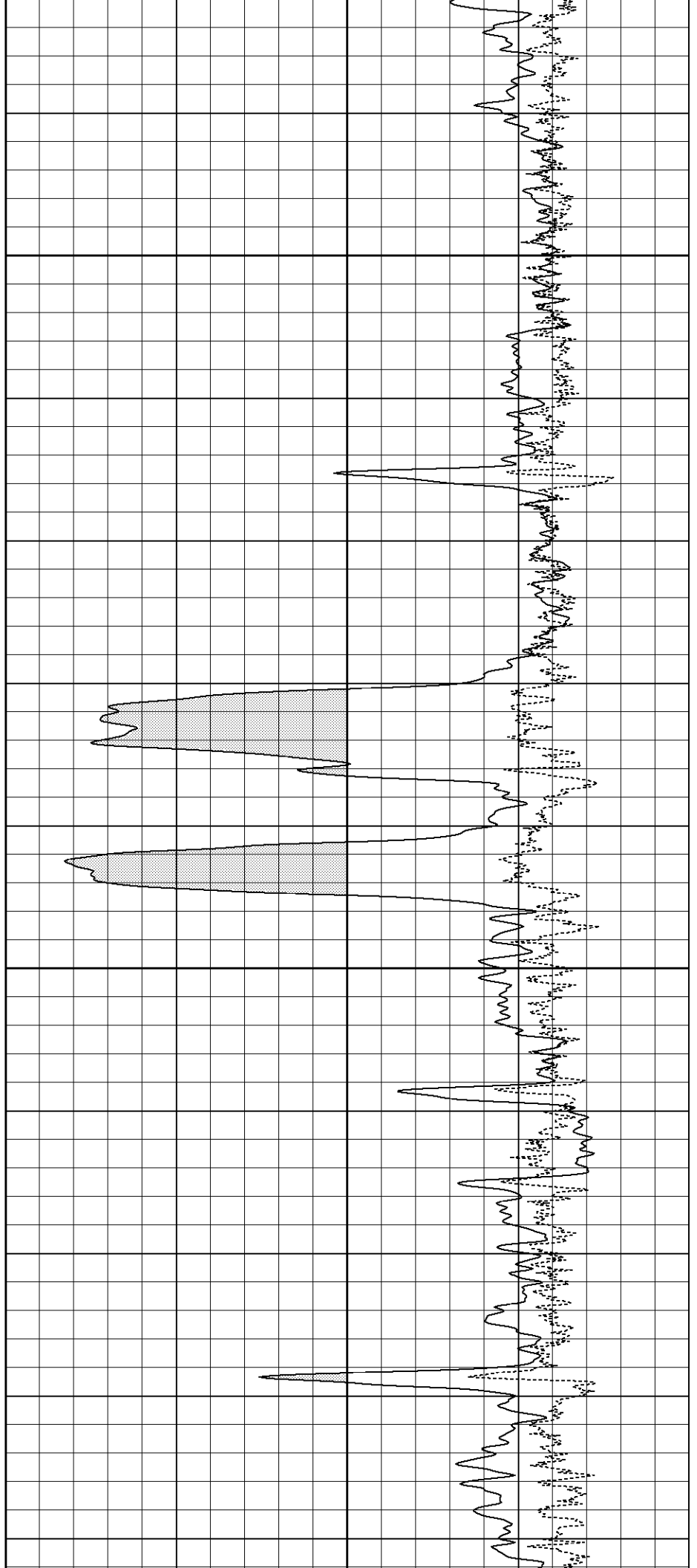
1650

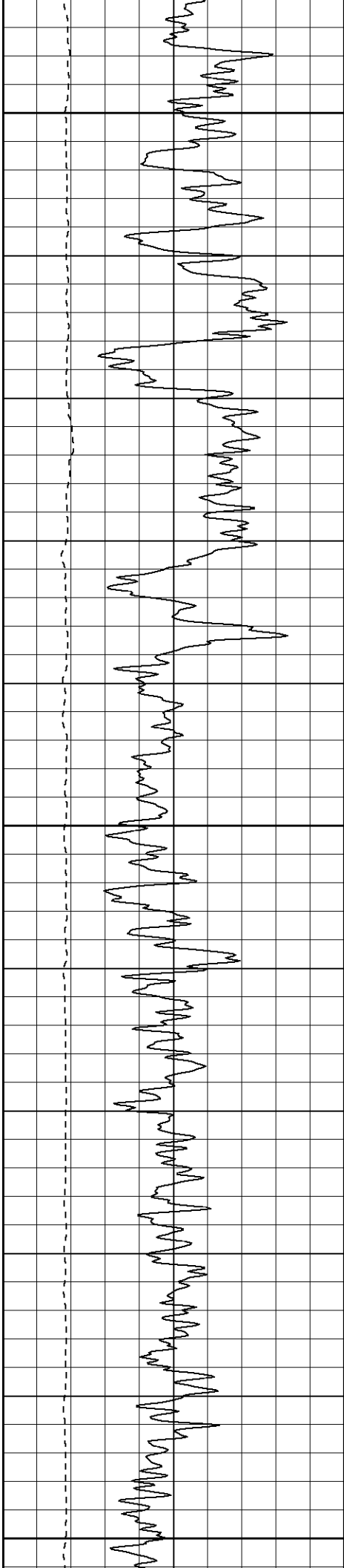




1700

1750

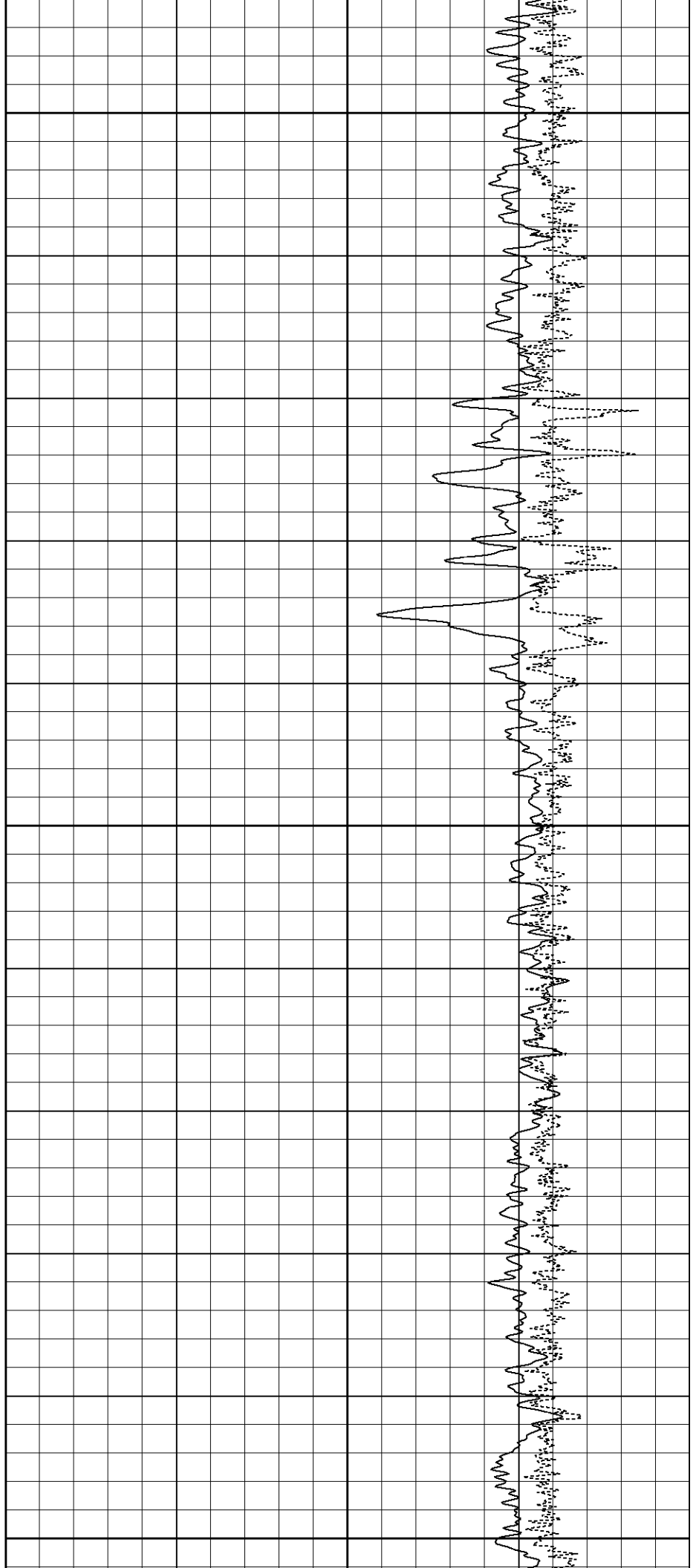


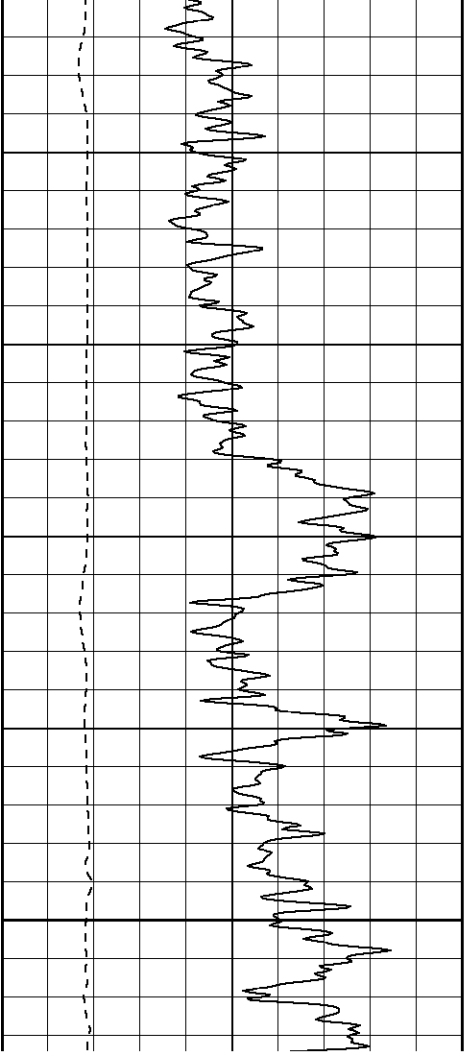


1800

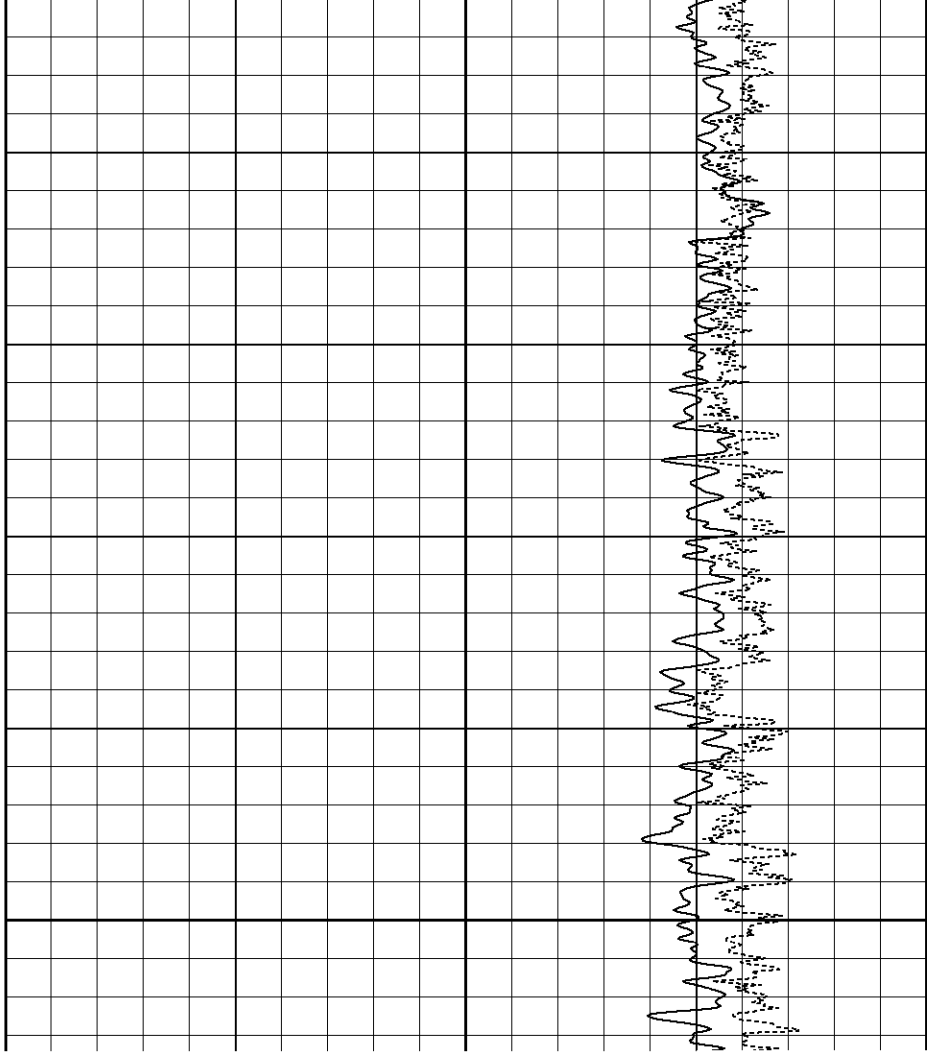
1850

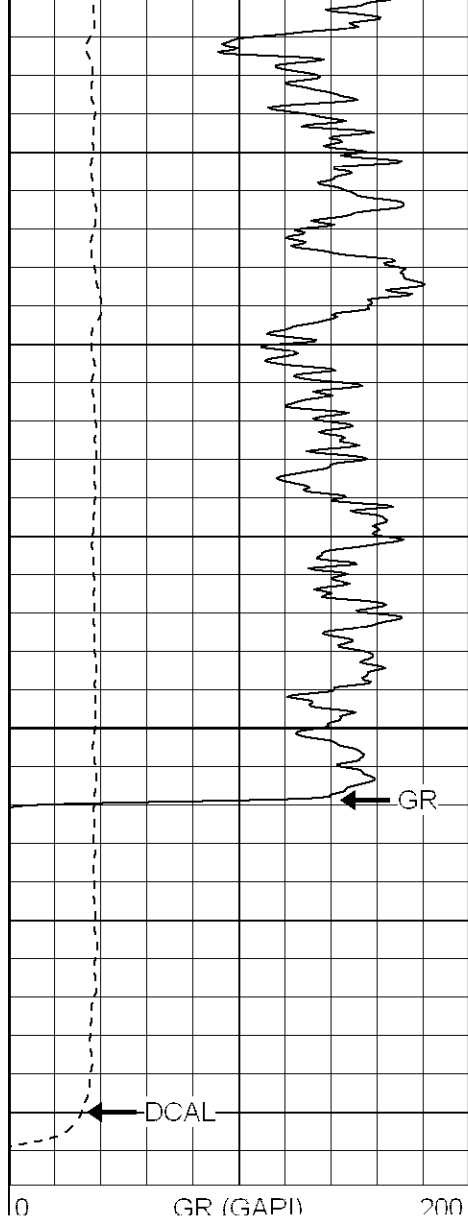
1900





1950





2050

