

T9N, R61W, 6th P.M.

EOG RESOURCES, INC.

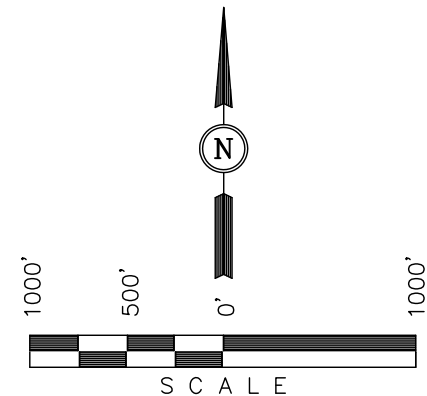
Well location, JACKSON DRAW #21-30H, located as shown in Lot 1 of Section 30, T9N, R61W, 6th P.M., Weld County, Colorado.

BASIS OF ELEVATION

SPOT ELEVATION LOCATED AT THE NE CORNER OF SECTION 2, T9N, R61W, 6th P.M. TAKEN FROM THE GROVER SOUTH, QUADRANGLE, COLORADO, WELD COUNTY, 7.5 MINUTE QUAD (TOPOGRAPHIC MAP) PUBLISHED BY THE UNITED STATES DEPARTMENT OF THE INTERIOR, GEOLOGICAL SURVEY. SAID ELEVATION IS MARKED AS BEING 5043 FEET.

BASIS OF BEARINGS

BASIS OF BEARINGS IS A G.P.S. OBSERVATION.



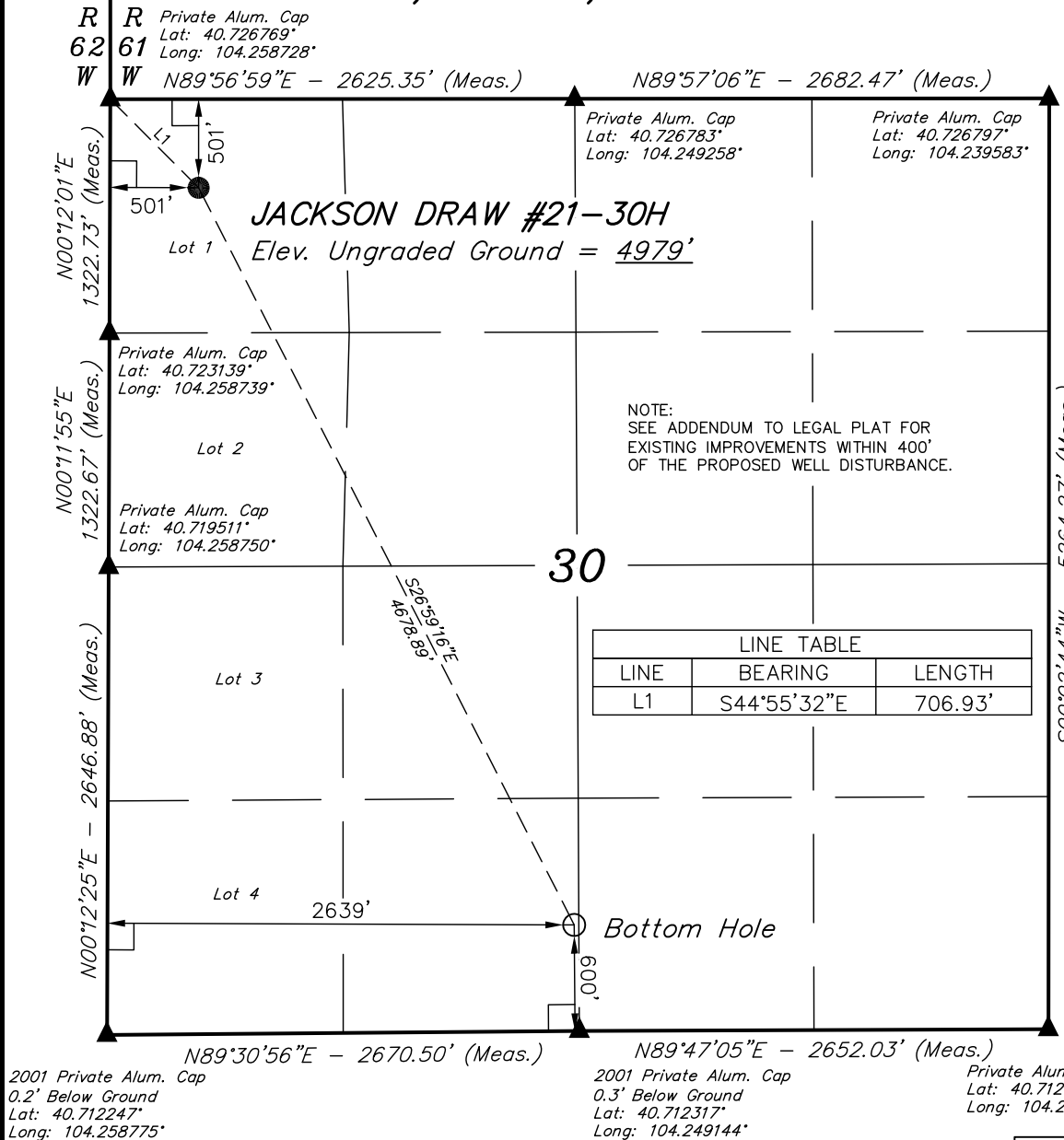
CERTIFICATE

THIS IS TO CERTIFY THAT THE ABOVE PLAT WAS PREPARED FROM FIELD NOTES OF ACTUAL SURVEYS MADE BY ME OR UNDER MY SUPERVISION AND THAT THE SAME ARE TRUE AND CORRECT TO THE BEST OF MY KNOWLEDGE AND BELIEF.

REGISTERED LAND SURVEYOR
REGISTRATION NO. 17492
STATE OF COLORADO

REVISED: 02-02-11 M.D.

UINTAH ENGINEERING & LAND SURVEYING
85 SOUTH 200 EAST - VERNAL, UTAH 84078
(435) 789-1017



LEGEND:

- = 90° SYMBOL
- = PROPOSED WELL HEAD.
- = SECTION CORNERS LOCATED.

PDOP=1.5	
NAD 83 (TARGET BOTTOM HOLE)	NAD 83 (SURFACE LOCATION)
LATITUDE = 40°42'50.26" (40.713961)	LATITUDE = 40°43'31.43" (40.725397)
LONGITUDE = 104°14'57.31" (104.249253)	LONGITUDE = 104°15'24.93" (104.256925)
NAD 27 (TARGET BOTTOM HOLE)	NAD 27 (SURFACE LOCATION)
LATITUDE = 40°42'50.32" (40.713978)	LATITUDE = 40°43'31.49" (40.725414)
LONGITUDE = 104°14'55.50" (104.248750)	LONGITUDE = 104°15'23.12" (104.256422)
STATE PLANE NAD 83	STATE PLANE NAD 83
N: 1505385.22 E: 3346721.25	N: 1509521.40 E: 3344536.16
STATE PLANE NAD 27	STATE PLANE NAD 27
N: 505384.28 E: 2346870.02	N: 509520.40 E: 2344684.88

SCALE 1" = 1000'	DATE SURVEYED: 11-04-10	DATE DRAWN: 11-19-10
PARTY R.P. B.H. M.D.	REFERENCES G.L.O. PLAT	
WEATHER COOL	FILE EOG RESOURCES, INC.	