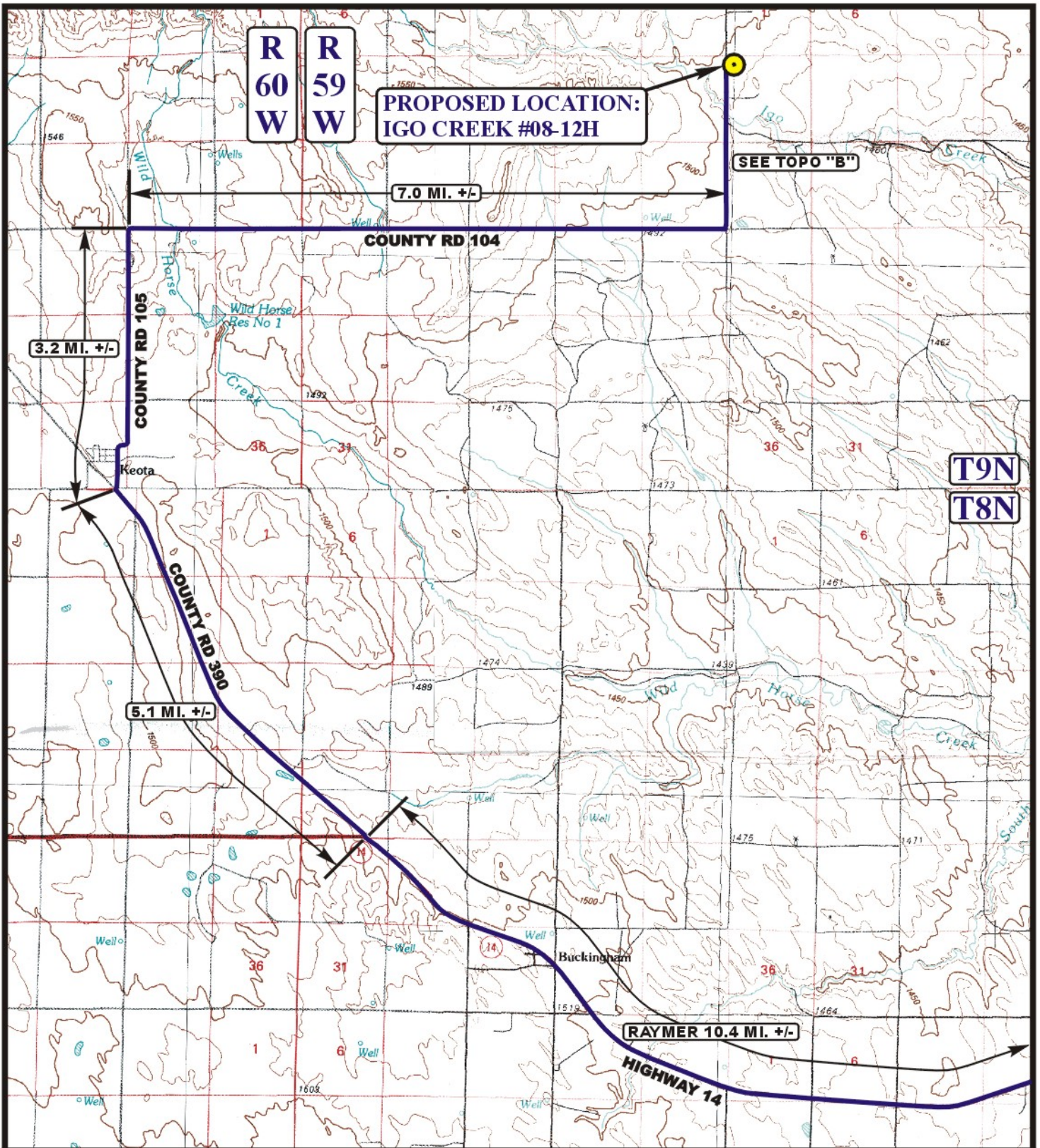


EOG RESOURCES, INC.  
IGO CREEK #08-12H  
SECTION 12, T9N, R59W, 6<sup>th</sup> P.M.

PROCEED IN A SOUTHWESTERLY, THEN NORTHWESTERLY DIRECTION FROM RAYMER, COLORADO ALONG HIGHWAY 14 APPROXIMATELY 10.4 MILES TO THE JUNCTION OF THIS ROAD AND COUNTY ROAD 390 TO THE NORTHWEST; TURN RIGHT AND PROCEED IN A NORTHWESTERLY DIRECTION APPROXIMATELY 5.1 MILES TO THE JUNCTION OF THIS ROAD AND COUNTY ROAD 105 TO THE NORTH; TURN RIGHT AND PROCEED IN A NORTHERLY DIRECTION APPROXIMATELY 3.2 MILES TO JUNCTION OF THIS ROAD AND COUNTY ROAD 104 TO THE EAST; TURN RIGHT AND PROCEED IN AN EASTERLY DIRECTION APPROXIMATELY 7.0 MILES TO THE JUNCTION OF THIS ROAD AND COUNTY ROAD 119 TO THE NORTH; TURN LEFT AND PROCEED IN A NORTHERLY DIRECTION APPROXIMATELY 1.9 MILES TO THE BEGINNING OF THE PROPOSED ACCESS ROAD TO THE EAST; FOLLOW ROAD FLAGS IN AN EASTERLY DIRECTION APPROXIMATELY 272' TO THE PROPOSED LOCATION.

TOTAL DISTANCE FROM RAYMER, COLORADO TO THE PROPOSED LOCATION IS APPROXIMATELY 27.6 MILES.



**LEGEND:**

● PROPOSED LOCATION

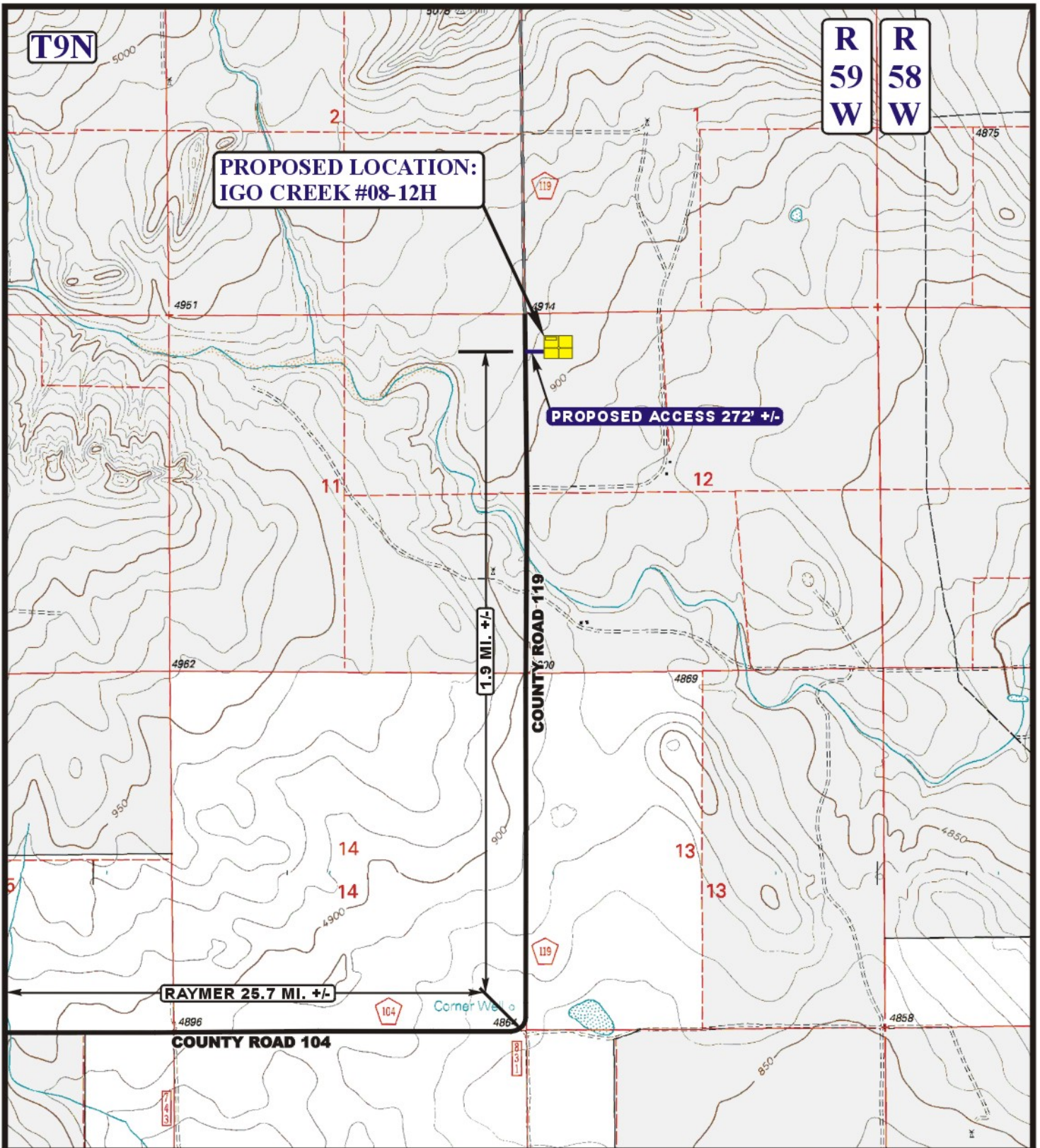


**EOG RESOURCES, INC.**

**IGO CREEK #08-12H  
SECTION 12, T9N, R59W, 6th P.M.  
501' FNL 501' FWL**

**UES** Uintah Engineering & Land Surveying  
85 South 200 East Vernal, Utah 84078  
(435) 789-1017 \* FAX (435) 789-1813

<b>ACCESS ROAD MAP</b>	<b>12</b>	<b>28</b>	<b>10</b>	<b>A TOPO</b>
	MONTH	DAY	YEAR	
SCALE: 1:100,000	DRAWN BY: S.F.		REVISED: 00-00-00	



**LEGEND:**

- EXISTING ROAD
- PROPOSED ACCESS ROAD



**EOG RESOURCES, INC.**

**IGO CREEK #08-12H  
SECTION 12, T9N, R59W, 6th P.M.  
501' FNL 501' FWL**



**Utah Engineering & Land Surveying**  
85 South 200 East Vernal, Utah 84078  
(435) 789-1017 \* FAX (435) 789-1813

**ACCESS ROAD  
MAP**

<b>12</b>	<b>28</b>	<b>10</b>
MONTH	DAY	YEAR

**B  
TOPO**

SCALE: 1" = 2000'    DRAWN BY: S.F.    REVISED: 00-00-00