

NOTE:
NATURAL GROUND HAS A 1.6% SLOPE
ON A SOUTHEASTERLY DIRECTION

EARTH VOLUMES
+ 4,546 CY CUT
- 3,495 CY FILL
- 2,605 CY TOPSOIL
NET 1554 CY EXCESS

+ 1,554 CY EXCESS
+ 5,635 RESERVE PIT
7,189 CY TOTAL EXCESS

DISTURBED AREA
PAD = 3.34ac
ROAD = 1.71ac



IF YOU DIG COLORADO - CALL US FIRST!
UTILITIES NOTIFICATION CENTER
1-800-922-1987
CELL: 811
CALL 2 BUSINESS DAYS PRIOR TO
EXCAVATION FOR UTILITY LOCATIONS



Trihydro
CORPORATION
1252 Commerce Drive
Laramie, Wyoming 82070
www.trihydro.com
(P) 307/745.7474 (F) 307/745.7729

CONSTRUCTION LAYOUT DRAWING 1 OF 3

CHESAPEAKE ENERGY
FRANKS 7-62 34 1H
ESTIMATED EARTH WORK
600' FNL, 1980' FWL

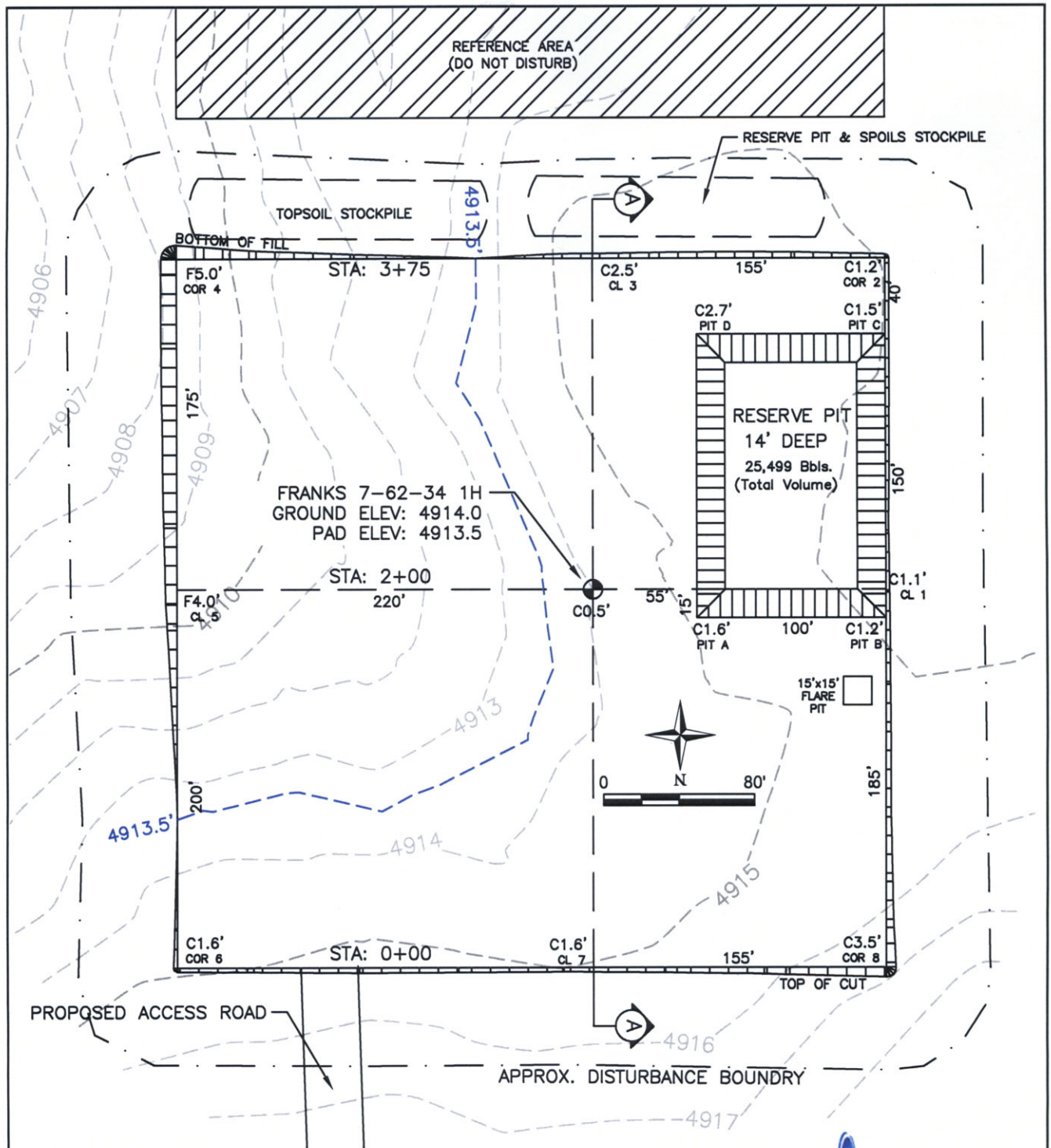
NE¹/₄NW¹/₄, SEC 34 T7N R62W, 6TH P.M.
WELD COUNTY, COLORADO

Rev.	Date	Description	By	Chk'd
REVISIONS				
Drawn By:	TAW	Checked By:	PFK	Scale: 1" = 80'

Date: 1/13/11

File: FRANKS_CERT

Rev:



APPROXIMATE DISTURBANCE AREA: 5.1 ACRES±
1.6% GRADE ON A SOUTHEASTERLY SLOPE
UNGRADED ELEVATION: 4914.0'
GRADED ELEVATION: 4913.5'



IF YOU DIG COLORADO - CALL US FIRST!
UTILITIES NOTIFICATION CENTER
1-800-922-1987
CELL: 811
CALL 2 BUSINESS DAYS PRIOR TO
EXCAVATION FOR UTILITY LOCATIONS



1252 Commerce Drive
Laramie, Wyoming 82070
www.trihydro.com
(P) 307/745.7474 (F) 307/745.7729

CONSTRUCTION LAYOUT DRAWING 2 OF 3

CHESAPEAKE ENERGY
FRANKS 7-62 34 1H

600' FNL, 1980' FWL

NE $\frac{1}{4}$ NW $\frac{1}{4}$, SEC 34 T7N R62W, 6TH P.M.
WELD COUNTY, COLORADO

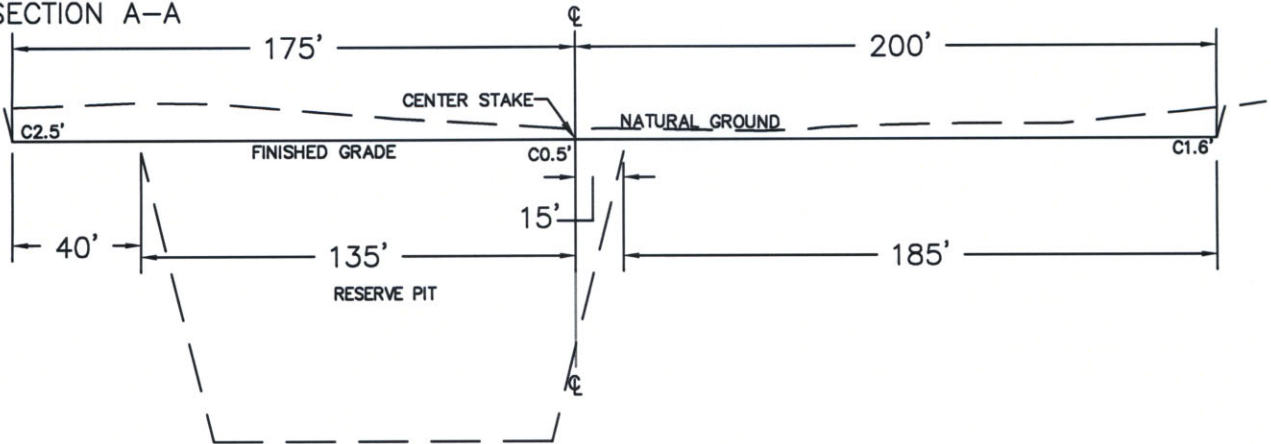
Rev.	Date	Description	By	Chk'd
REVISIONS				
Drawn By:	TAW	Checked By:	PFK	Scale: 1" = 80'

Date: 1/13/11

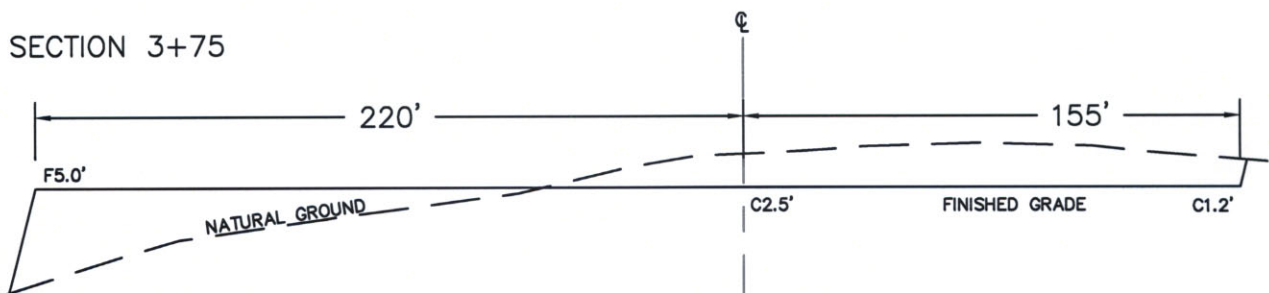
File: FRANKS_CERT

Rev:

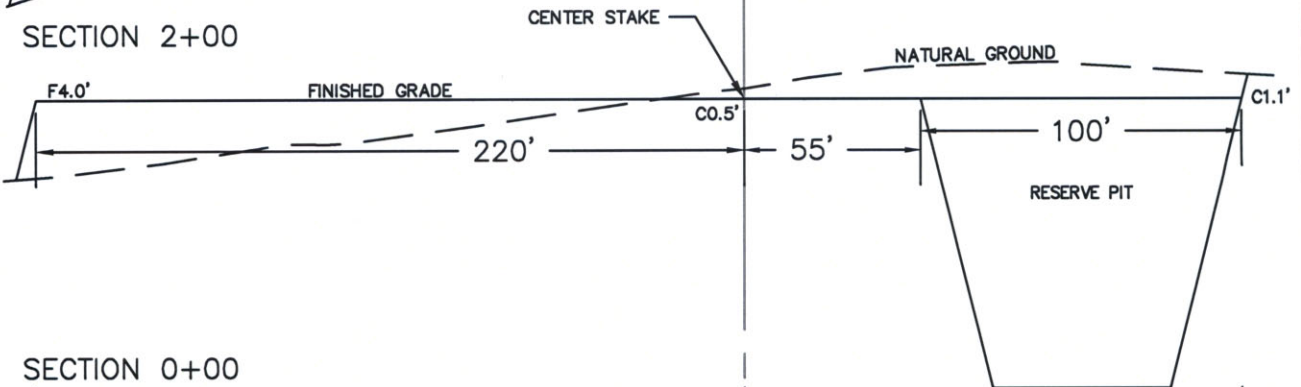
SECTION A-A



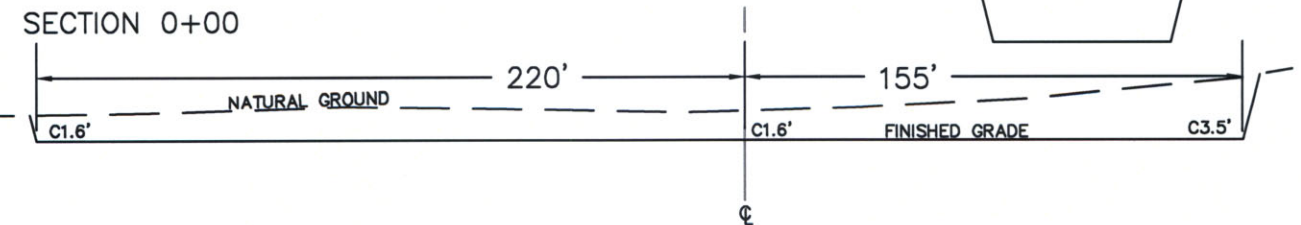
SECTION 3+75



SECTION 2+00



SECTION 0+00



EARTH VOLUMES
 + 4,546 CY CUT
 - 3,495 CY FILL
 - 2,605 CY TOPSOIL
 NET 1554 CY EXCESS

+ 1,554 CY EXCESS
 + 5,635 RESERVE PIT 7,189
 CY TOTAL EXCESS



IF YOU DIG COLORADO - CALL US FIRST!
 UTILITIES NOTIFICATION CENTER
 1-800-922-1987
 CELL: 811
 CALL 2 BUSINESS DAYS PRIOR TO
 EXCAVATION FOR UTILITY LOCATIONS



Trihydro
 CORPORATION
 1252 Commerce Drive
 Laramie, Wyoming 82070
 www.trihydro.com
 (P) 307/745.7474 (F) 307/745.7729

CONSTRUCTION LAYOUT DRAWING 3 OF 3

CHESAPEAKE ENERGY
FRANKS 7-62 34 1H

600' FNL, 1980' FWL

NE $\frac{1}{4}$ NW $\frac{1}{4}$, SEC 34 T7N R62W, 6TH P.M.
WELD COUNTY, COLORADO

Rev.	Date	Description	By	Chk'd
REVISIONS				
Drawn By: TAW / Checked By: PFK / Scale: 1" = 60H:10V				

Date: 1/13/11

File: FRANKS_CERT

Rev: