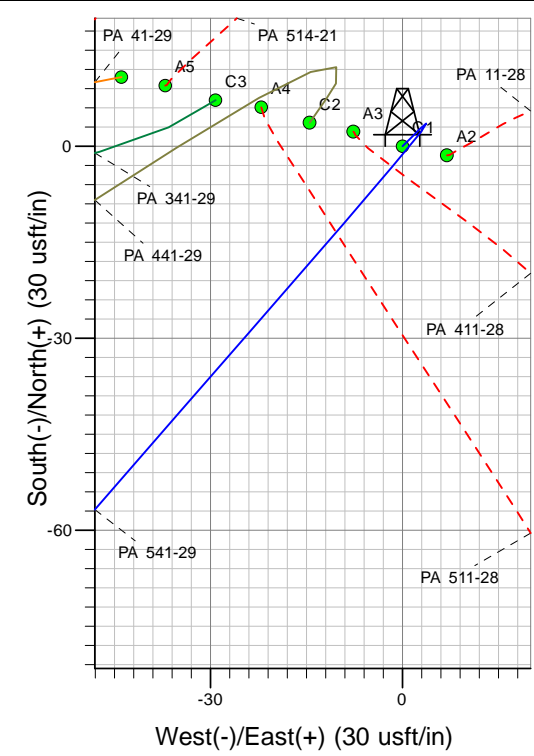
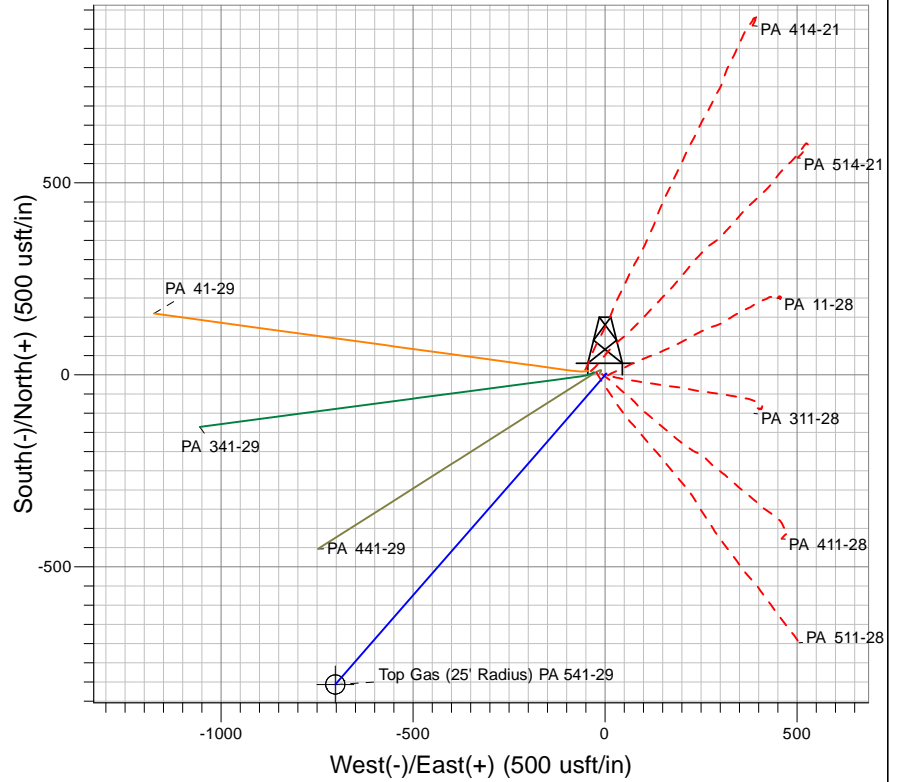
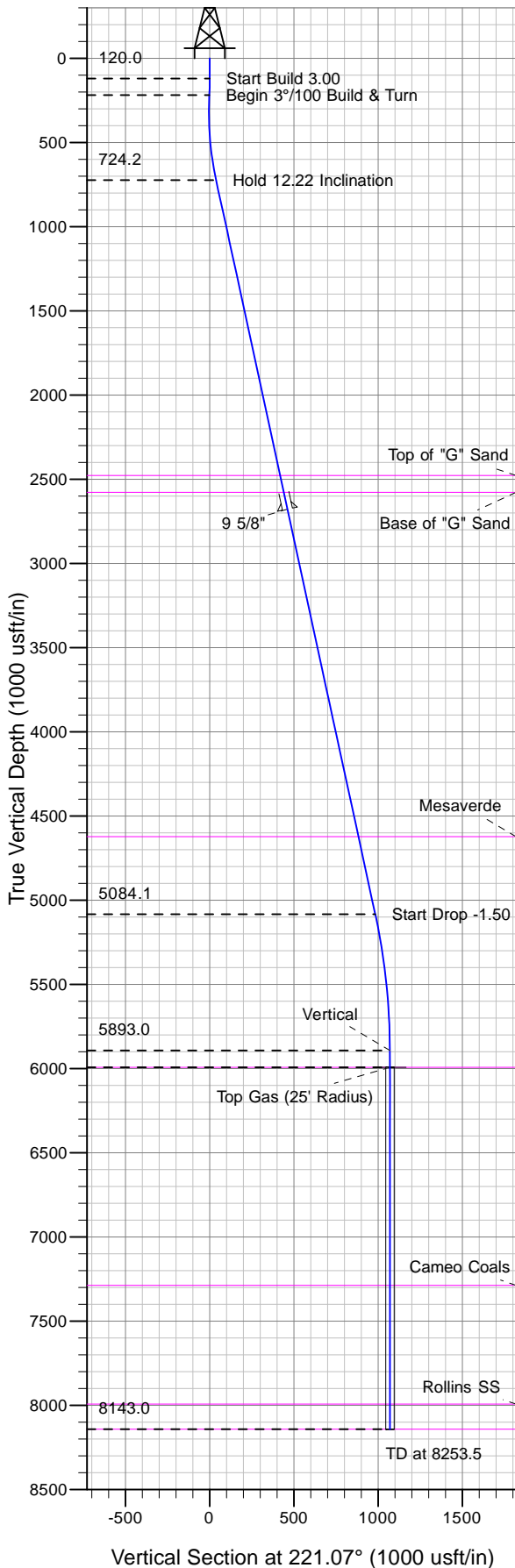




Well Name: PA 541-29
 Surface Location: PA 11-28 Pad
 North American Datum 1983 , US State Plane 1983 , Colorado Central Zone
 Ground Elevation: 5965.0
 +N/-S +E/-W Northing Easting Latitude Longitude Slot
 0.0 0.0 1617374.90 2291362.80 39° 30' 5.679 N 108° 0' 41.874 W C1
 KELLY BUSHING @ 5991.0usft (Nabors 574 (26' RKB) kjs)



Project: PA 28-06S-095W
 Site: PA 11-28 Pad
 Well: PA 541-29
 Plan #4 19Nov10 kjs

T M
 Azimuths to True North
 Magnetic North: 10.80°
 Magnetic Field
 Strength: 52628.5snT
 Dip Angle: 65.84°
 Date: 12/3/2007
 Model: IGRF2005-10

ANNOTATIONS

TVD	MD	Inc	Azi	+N/-S	+E/-W	VSec	Departure	Annotation
120.0	120.0	0.00	0.00	0.0	0.0	0.0	0.0	Start Build 3.00
220.0	220.0	3.00	45.00	1.9	1.9	-2.6	2.6	Begin 3°/100 Build & Turn
724.2	727.3	12.23	221.13	-29.4	-24.2	38.1	49.4	Hold 12.22 Inclination
5084.1	5188.5	12.23	221.13	-741.0	-645.6	982.8	994.1	Start Drop -1.50
5893.0	6003.5	0.00	0.00	-806.3	-702.6	1069.4	1080.8	Vertical
5993.0	6103.5	0.00	0.00	-806.3	-702.6	1069.4	1080.8	Top Gas
8143.0	8253.5	0.00	0.00	-806.3	-702.6	1069.4	1080.8	TD at 8253.5