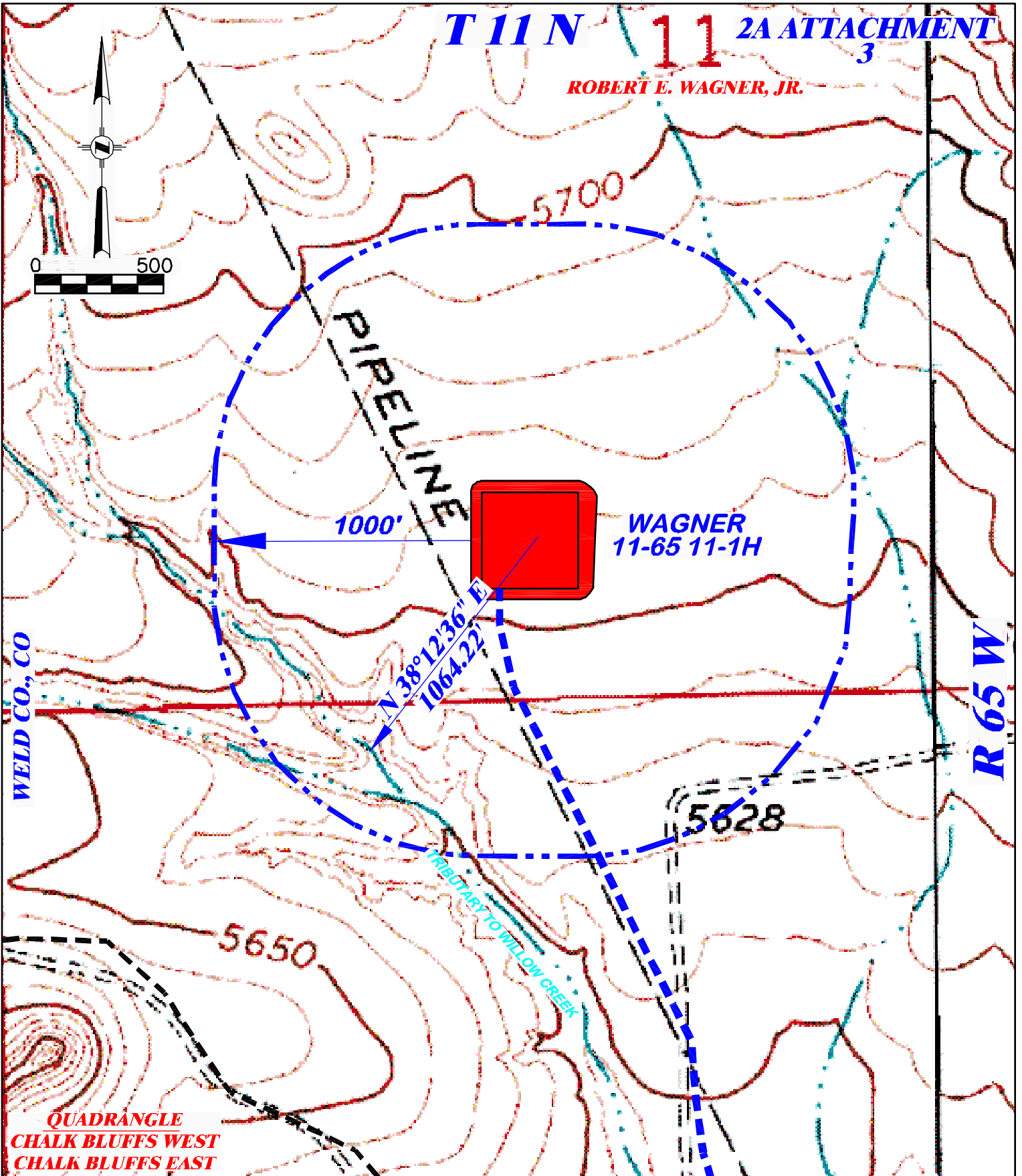


T 11 N 11 2A ATTACHMENT 3

ROBERT E. WAGNER, JR.



**QUADRANGLE
CHALK BLUFFS WEST
CHALK BLUFFS EAST**



RIFFIN & ASSOCIATES, INC.
1414 ELK ST., ROCK SPRINGS, WY 82901

(307) 362-5028

DRAWN: 12/30/10 - MMM

REVISED: NA

SCALE: 1" = 500'

DRG JOB No. 18245

EXHIBIT 4A

HYDROLOGY MAP

**CHESAPEAKE ENERGY, LLC.
WAGNER 11-65 11-1H
SECTION 11, T11N, R65W**

PROPOSED ACCESS - - - - -

EXISTING ROAD —————