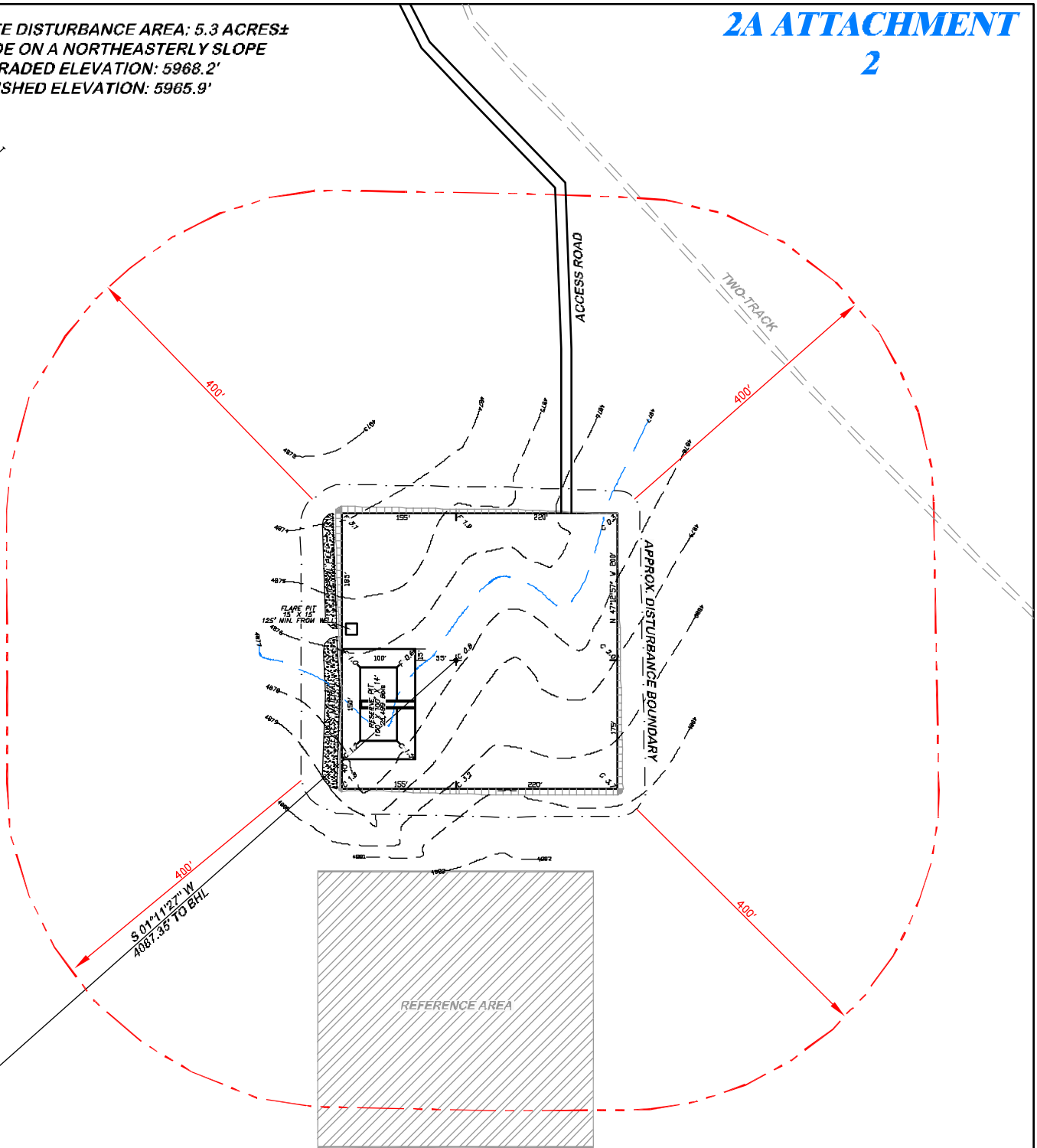
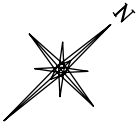


APPROXIMATE DISTURBANCE AREA: 5.3 ACRES±
 4.7% GRADE ON A NORTHEASTERLY SLOPE
 UNGRADED ELEVATION: 5968.2'
 FINISHED ELEVATION: 5965.9'

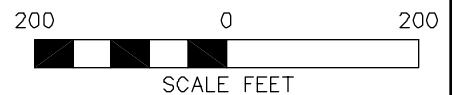
2A ATTACHMENT


2



**BEFORE DIGGING
 CALL FOR
 UTILITY LINE LOCATION**

NOTE: THE EARTH QUANTITIES ON
 THIS DRAWING ARE ESTIMATED
 AND THE USE OF IS AT THE
 RESPONSIBILITY OF THE USER.



 RIFFIN & ASSOCIATES, INC. (307) 362-6028 1414 ELK ST., ROCK SPRINGS, WY 82901		LOCATION DRAWING	
		CHESAPEAKE ENERGY, LLC. CASS 7-62 15-1H SECTION 15, T7N, R62W	
DRAWN: 1/17/11 - MMM	SCALE: 1" = 200'	UNGRADED ELEVATION: 4877.8' FINISHED ELEVATION: 4877.0'	
REVISED: NA	DRG JOB No. 18303		
	EXHIBIT 2D		