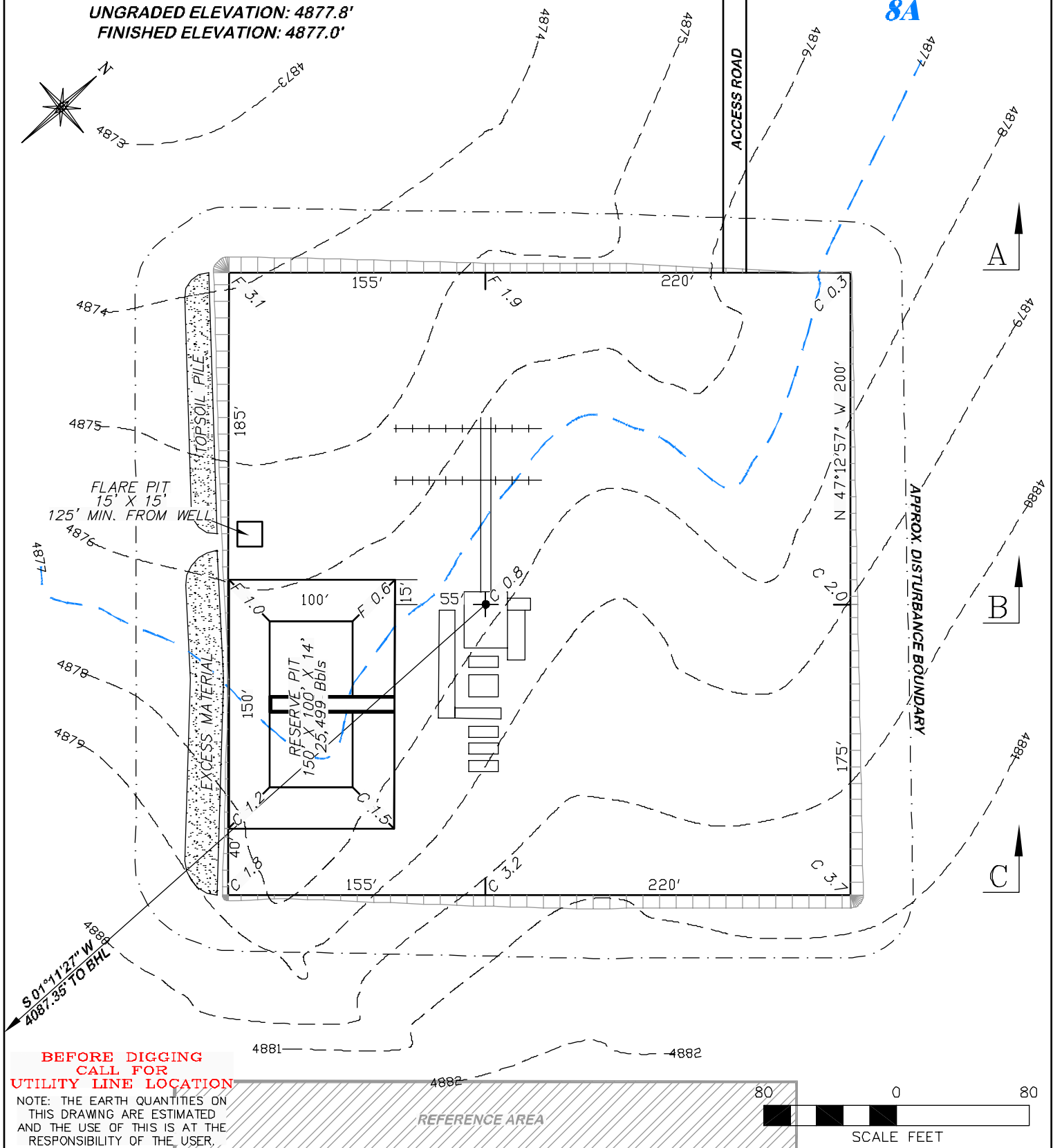
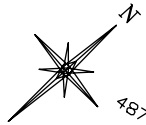


**FINISHED ELEVATION: 4877.0'**

8A



NOTE: THE EARTH QUANTITIES ON THIS DRAWING ARE ESTIMATED AND THE USE OF THIS IS AT THE RESPONSIBILITY OF THE USER.



**RIFFIN & ASSOCIATES, INC.**  
1414 ELK ST., ROCK SPRINGS, WY 82901

(307) 362-5028

**DRAWN: 1/17/11 - MMM**

**SCALE: 1" = 80'**

**REVISED: NA**

**DRG JOB No. 18303**

**EXHIBIT 2**

**SECTION 15, T7N, R62W**

### ESTIMATED EARTHWORK

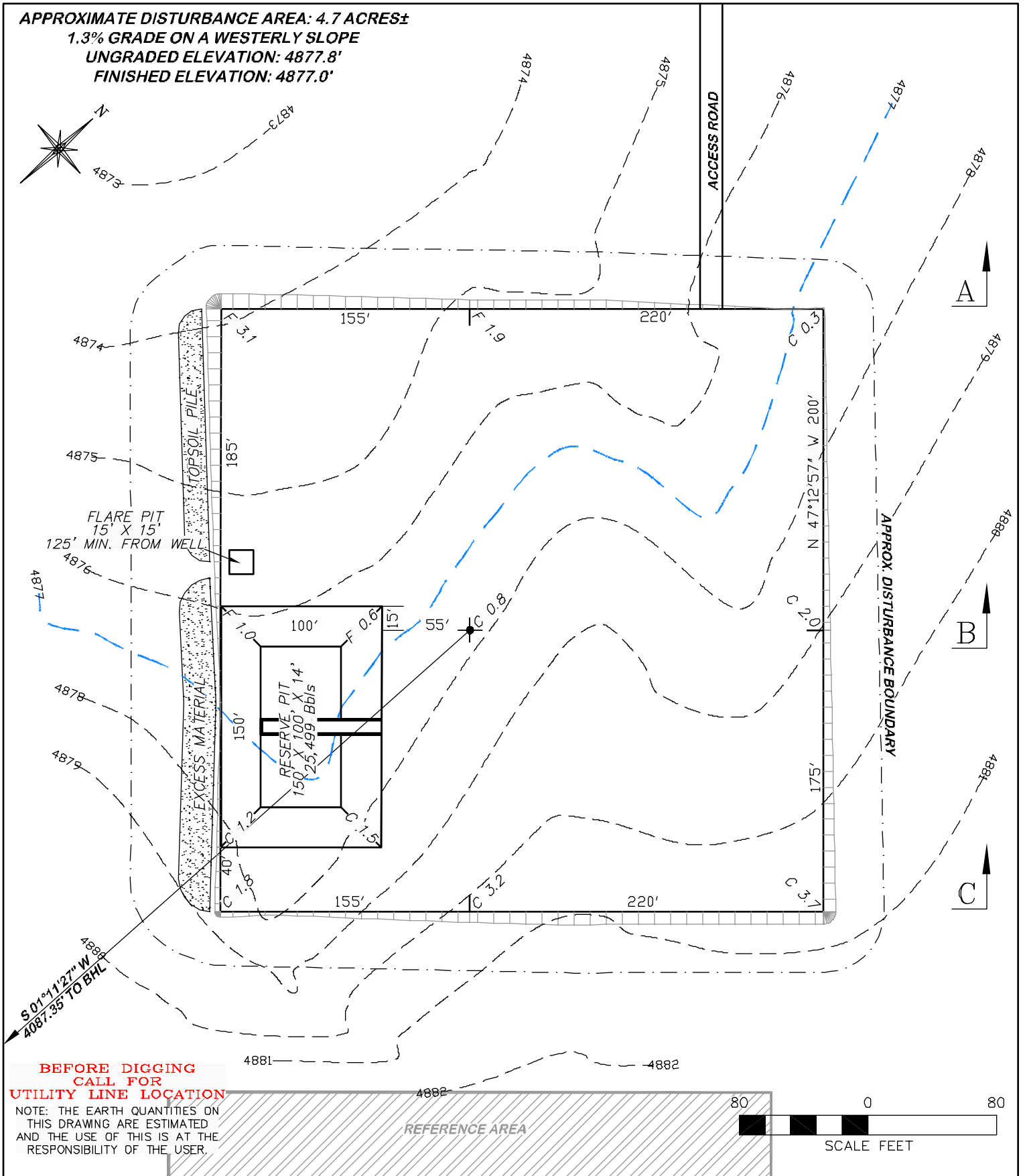
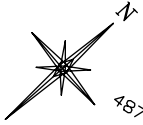
ITEM	CUT	FILL	TOPSOIL	EXCESS
PAD	5232 CY	2552 CY	2605 CY	75 CY
PIT	5635 CY			5635 CY
TOTALS	10867 CY	2552 CY	2605 CY	5710 CY

APPROXIMATE DISTURBANCE AREA: 4.7 ACRES±

1.3% GRADE ON A WESTERLY SLOPE

UNGRADED ELEVATION: 4877.8'

FINISHED ELEVATION: 4877.0'



**RIFFIN & ASSOCIATES, INC.**  
1414 ELK ST., ROCK SPRINGS, WY 82901

(307) 362-5028

DRAWN: 1/17/11 - MMM

SCALE: 1" = 80'

REVISED: NA

DRG JOB No. 18303

EXHIBIT 2A

**CONSTRUCTION LAYOUT DRAWING 2 OF 3**

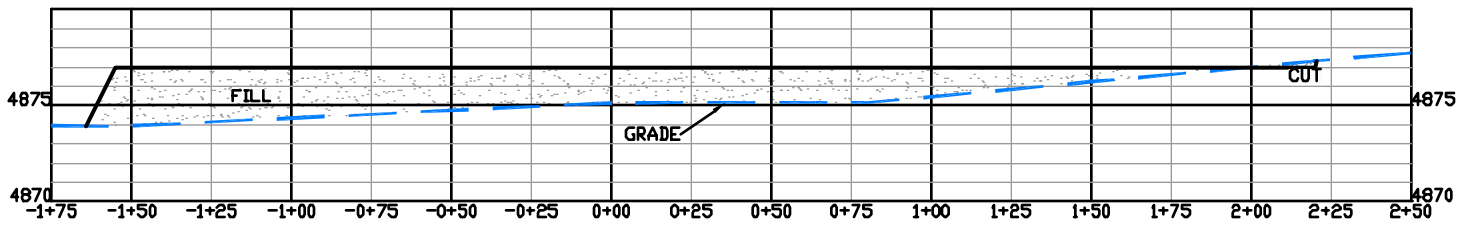
**CHESAPEAKE ENERGY, LLC.**

**CASS 7-62 15-1H**

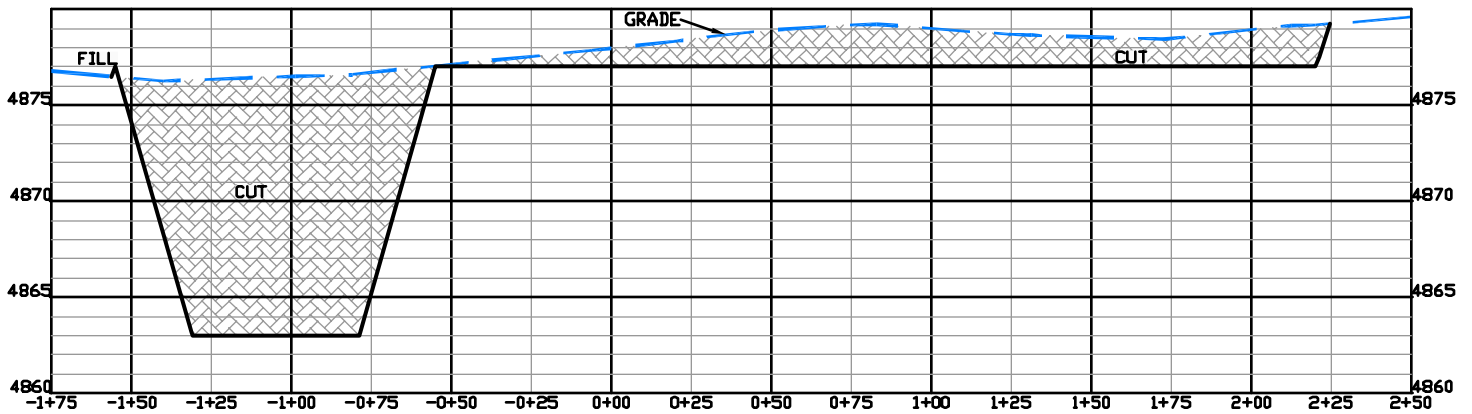
**SECTION 15, T7N, R62W**

UNGRADED ELEVATION: 4877.8'

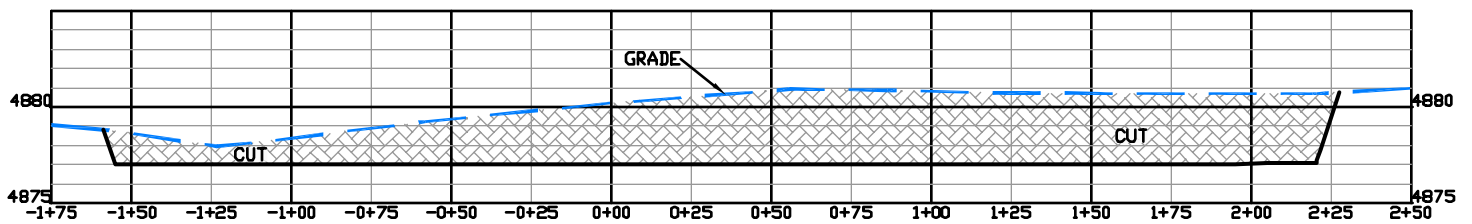
FINISHED ELEVATION: 4877.0'




**A**



**B**



**C**

 <p><b>DRG RIFFIN &amp; ASSOCIATES, INC.</b>          (307) 362-6028 1414 ELK ST., ROCK SPRINGS, WY 82901</p>		<b>CONSTRUCTION LAYOUT DRAWING 3 OF 3</b>	
		<b>CHESAPEAKE ENERGY, LLC.</b> <b>CASS 7-62 15-1H</b> <b>SECTION 15, T7N, R62W</b>	
<b>DRAWN: 1/17/11 - MMM</b>	<b>HORZ. 1" = 60' VERT. 1" = 10'</b>	<b>UNGRADED ELEVATION: 4877.8'</b> <b>FINISHED ELEVATION: 4877.0'</b>	
<b>REVISED: NA</b>	<b>DRG JOB No. 18303</b>		
	<b>EXHIBIT 3</b>		