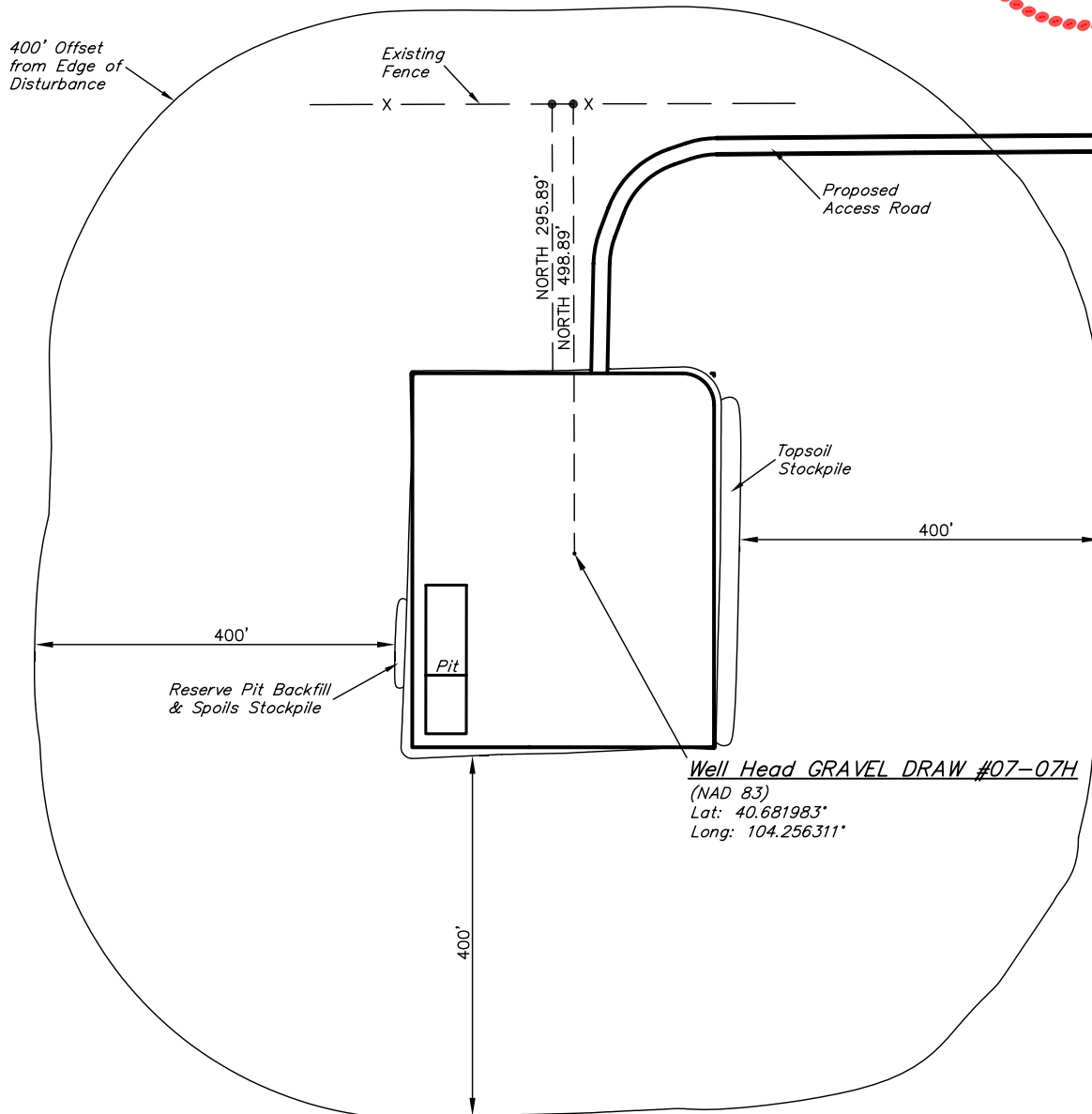




EOG RESOURCES, INC.
ADDENDUM TO LEGAL PLAT FOR
GRAVEL DRAW #07-07H
SECTION 7, T8N, R61W, 6th. P.M.
501' FNL 501' FWL

SCALE: 1" = 200'
DATE: 12-9-10
DRAWN BY: J.I.



EOG RESOURCES, INC.

CONSTRUCTION LAYOUT FOR

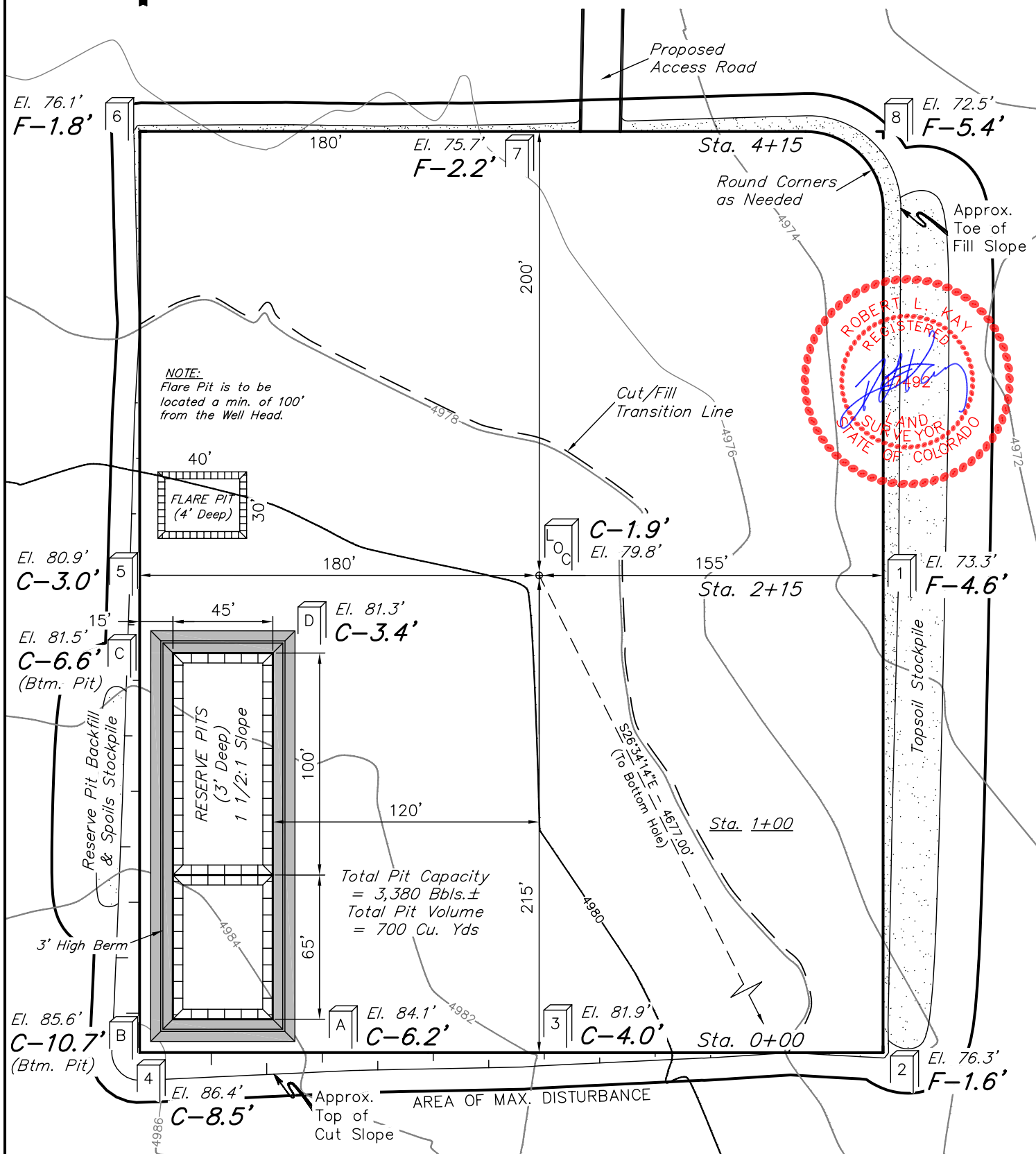
GRAVEL DRAW #07-07H
SECTION 7, T8N, R61W, 6th. P.M.
501' FNL 501' FWL

FIGURE #1

SCALE: 1" = 60'

DATE: 12-9-10

DRAWN BY: J.I.



Elev. Ungraded Ground At Loc. Stake = **4979.8'**
FINISHED GRADE ELEV. AT LOC. STAKE = **4977.9'**

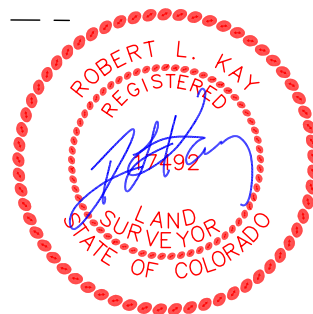
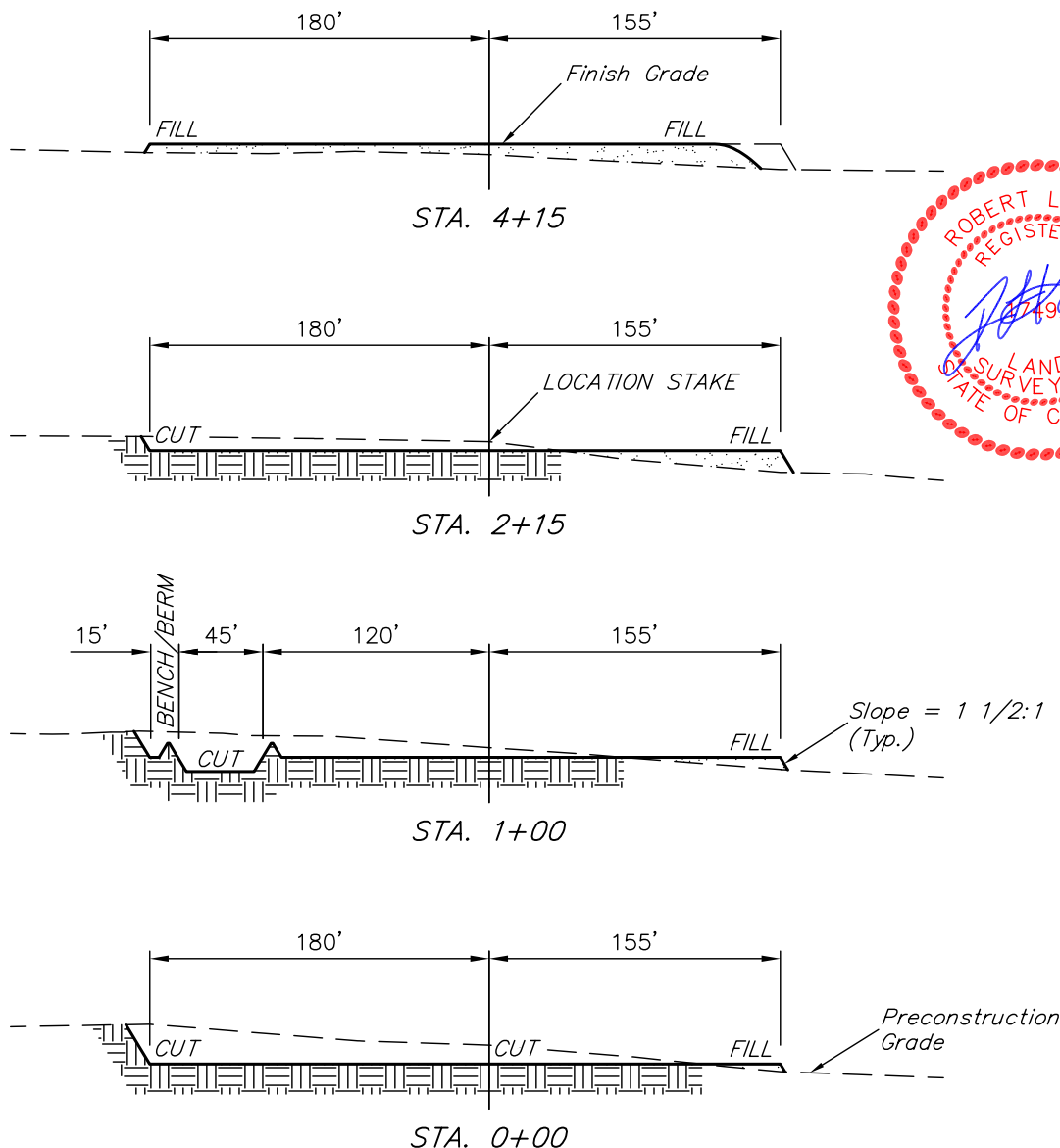
UINTAH ENGINEERING & LAND SURVEYING
85 So. 200 East * Vernal, Utah 84078 * (435) 789-1017

1" = 40'
X-Section
Scale
1" = 100'

EOG RESOURCES, INC.
CONSTRUCTION LAYOUT CROSS SECTIONS FOR
GRAVEL DRAW #07-07H
SECTION 7, T8N, R61W, 6th. P.M.
501' FNL 501' FWL

FIGURE #2

DATE: 12-9-10
DRAWN BY: J.I.



NOTE:

Topsoil should not be Stripped Below Finished Grade on Substructure Area.

APPROXIMATE ACREAGES

WELL SITE DISTURBANCE = ± 4.086 ACRES
ACCESS ROAD DISTURBANCE = ± 7.087 ACRES
TOTAL = ± 11.173 ACRES

* NOTE:
FILL QUANTITY INCLUDES 5% FOR COMPACTION

APPROXIMATE YARDAGES

(6") Topsoil Stripping = 2,780 Cu. Yds.
Remaining Location = 7,080 Cu. Yds.
TOTAL CUT = 9,860 CU.YDS.
FILL = 6,730 CU.YDS.

EXCESS MATERIAL = 3,130 Cu. Yds.
Topsoil & Pit Backfill = 3,130 Cu. Yds.
(1/2 Pit Vol.)
EXCESS UNBALANCE = 0 Cu. Yds.
(After Interim Rehabilitation)

UINTAH ENGINEERING & LAND SURVEYING
85 So. 200 East * Vernal, Utah 84078 * (435) 789-1017

EOG RESOURCES, INC.

TYPICAL RIG LAYOUT FOR

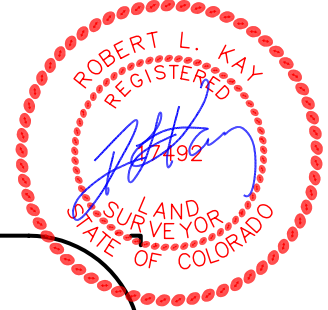
GRAVEL DRAW #07-07H
SECTION 7, T8N, R61W, 6th. P.M.
501' FNL 501' FWL

FIGURE #3

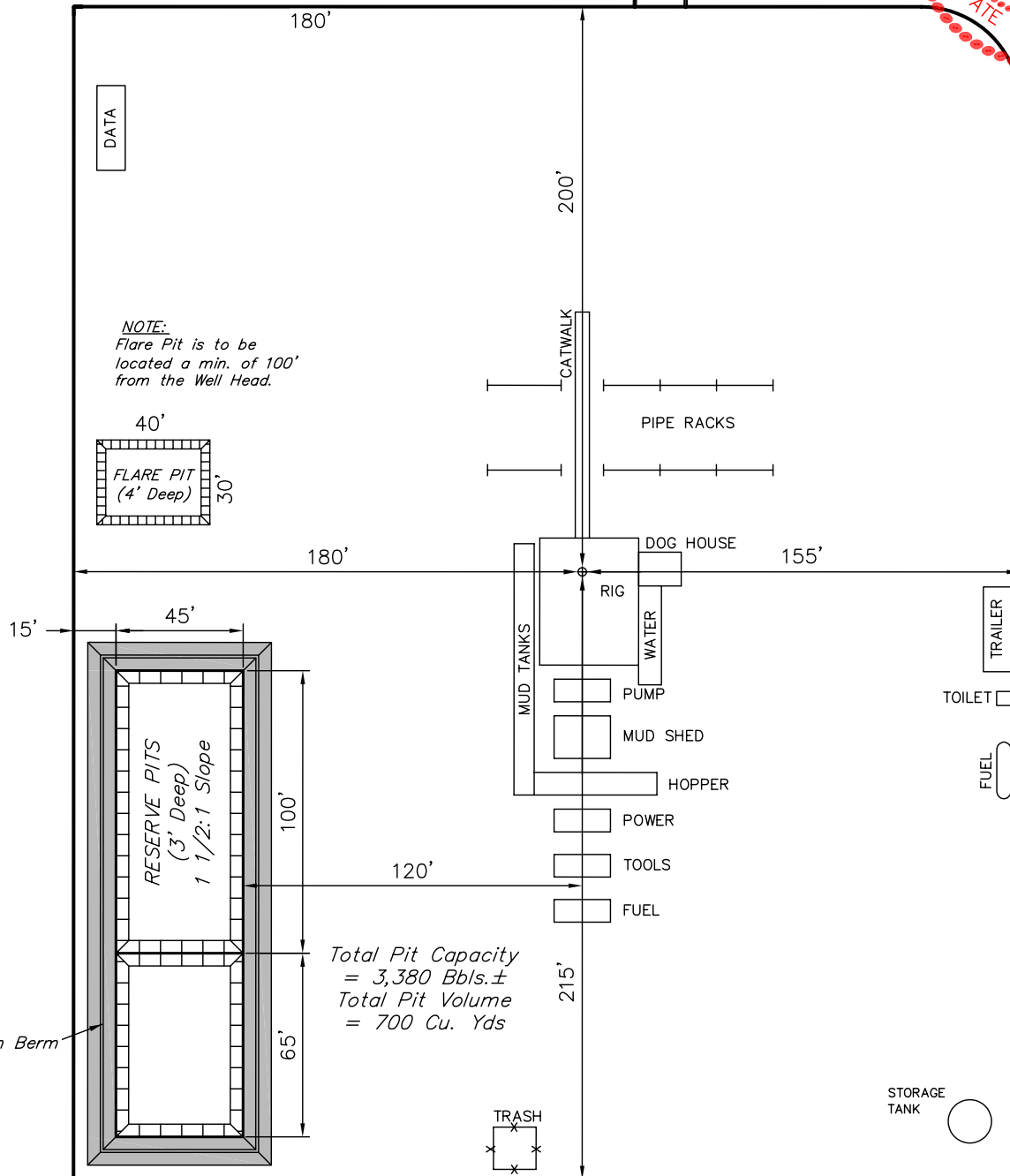
SCALE: 1" = 60'

DATE: 12-9-10

DRAWN BY: J.I.



Proposed
Access Road

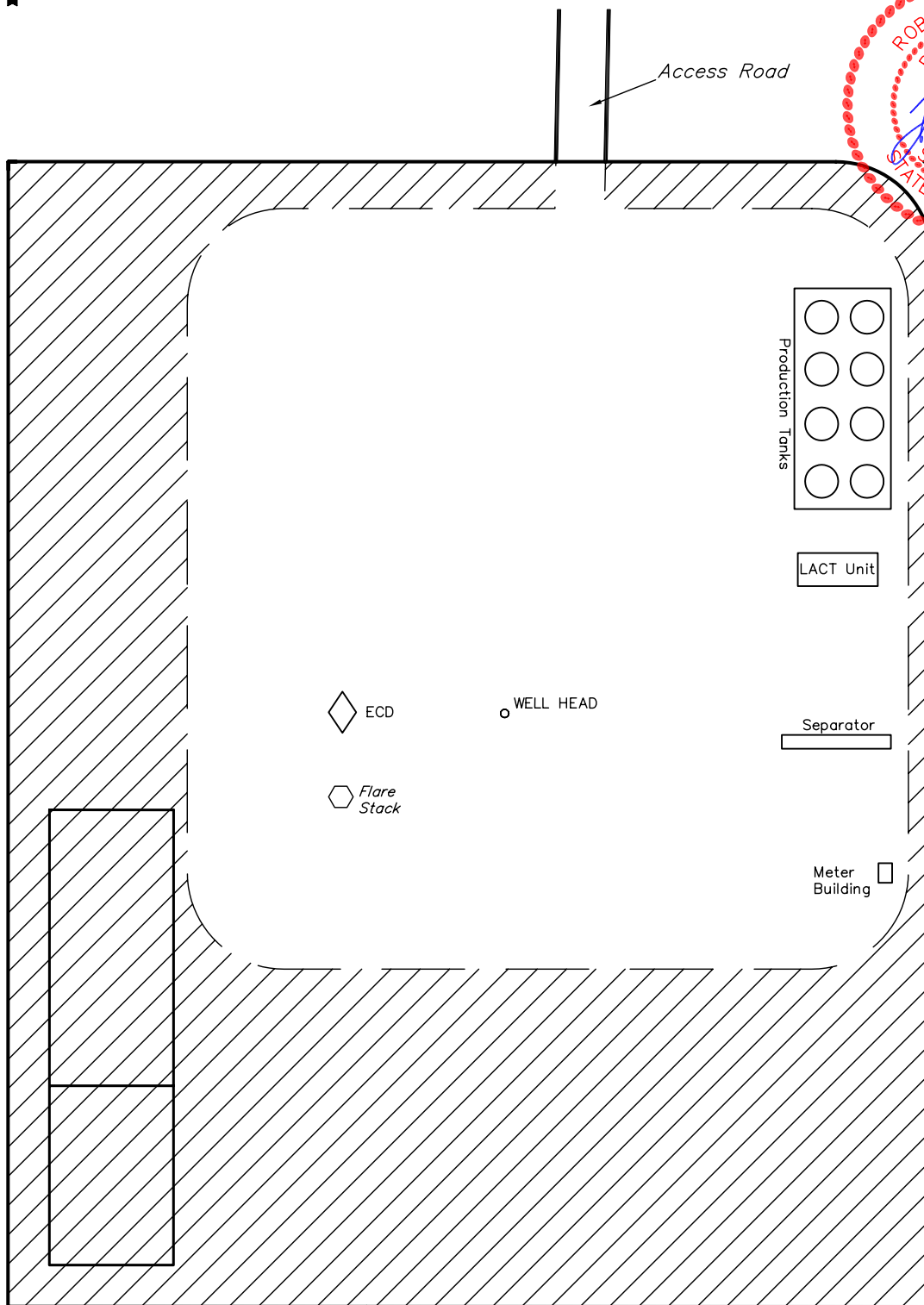
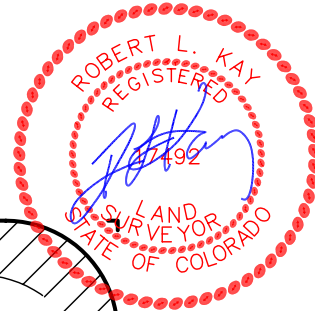




EOG RESOURCES, INC.
RECLAMATION DIAGRAM FOR
GRAVEL DRAW #07-07H
SECTION 7, T8N, R61W, 6th. P.M.
501' FNL 501' FWL

FIGURE #4

SCALE: 1" = 60'
DATE: 12-9-10
DRAWN BY: J.I.



APPROXIMATE ACREAGES
UN-RECLAIMED = ± 1.638 ACRES



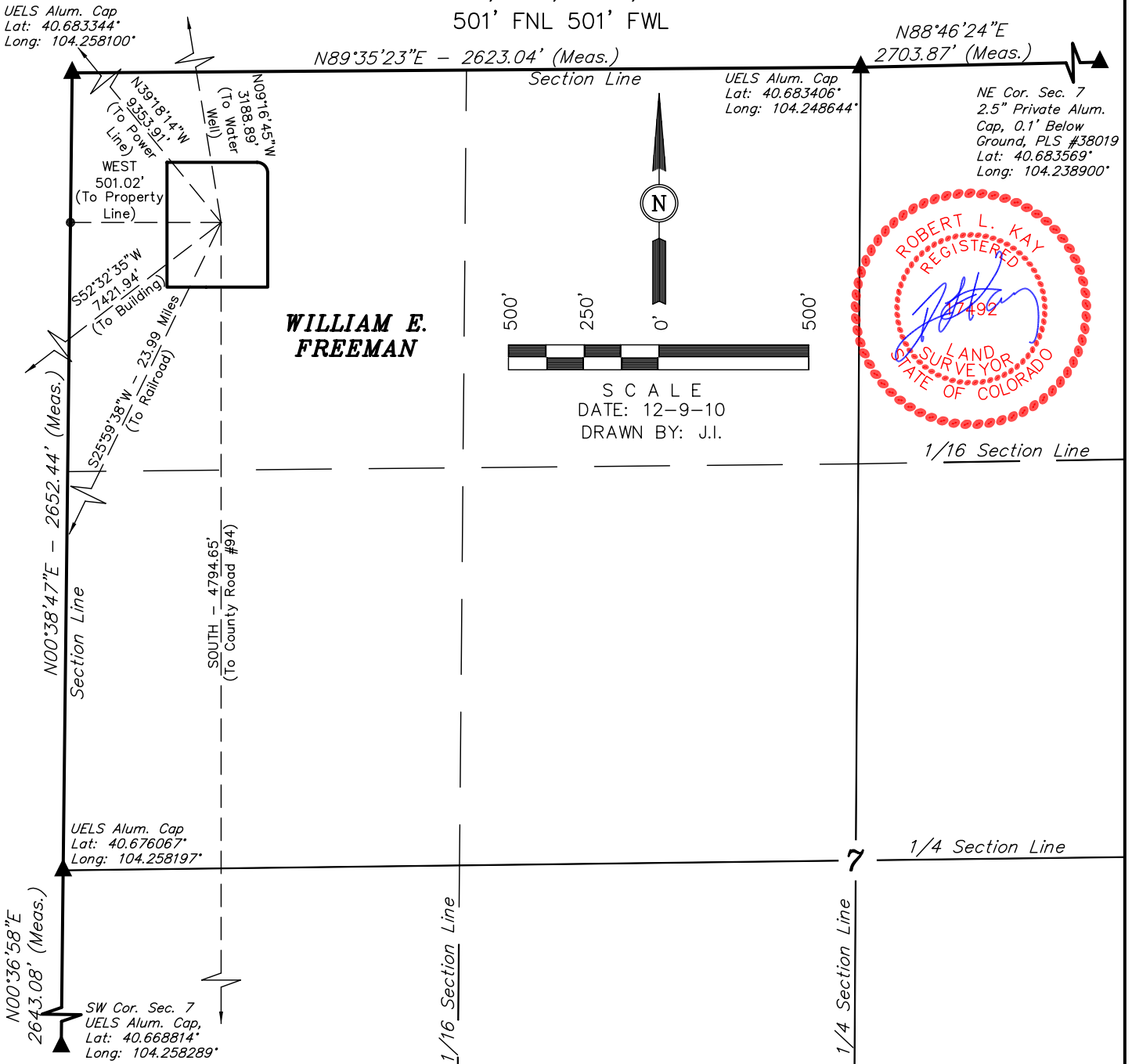
RECLAIMED AREA

EOG RESOURCES, INC.

LOCATION DRAWING FOR GRAVEL DRAW #07-07H SECTION 7, T8N, R61W, 6th. P.M. 501' FNL 501' FWL

FIGURE #5

UELS Alum. Cap
Lat: 40.683344°
Long: 104.258100°



PLANT COMMUNITY

- ☐ DISTURBED GRASSLAND
- ☐ NATIVE GRASSLAND
- ☐ SHRUB LAND
- ☐ PLAINS RIPARIAN
- ☐ MOUNTAIN RIPARIAN
- ☐ FOREST LAND
- ☐ WETLANDS AQUATIC
- ☐ ALPINE
- ☐ OTHER (Describe): _____

CURRENT LAND USE

- CROP LAND: ☐ IRRIGATED ☐ DRY LAND ☐ IMPROVED PASTURE ☐ HAY MEADOW ☐ CRP
- NON-CROP LAND: ☐ RANGELAND ☐ TIMBER ☐ RECREATIONAL ☐ OTHER (Describe) _____
- SUBDIVIDED: ☐ INDUSTRIAL ☐ COMMERCIAL ☐ RESIDENTIAL _____

FUTURE LAND USE

- CROP LAND: ☐ IRRIGATED ☐ DRY LAND ☐ IMPROVED PASTURE ☐ HAY MEADOW ☐ CRP
- NON-CROP LAND: ☐ RANGELAND ☐ TIMBER ☐ RECREATIONAL ☐ OTHER (Describe) _____
- SUBDIVIDED: ☐ INDUSTRIAL ☐ COMMERCIAL ☐ RESIDENTIAL _____