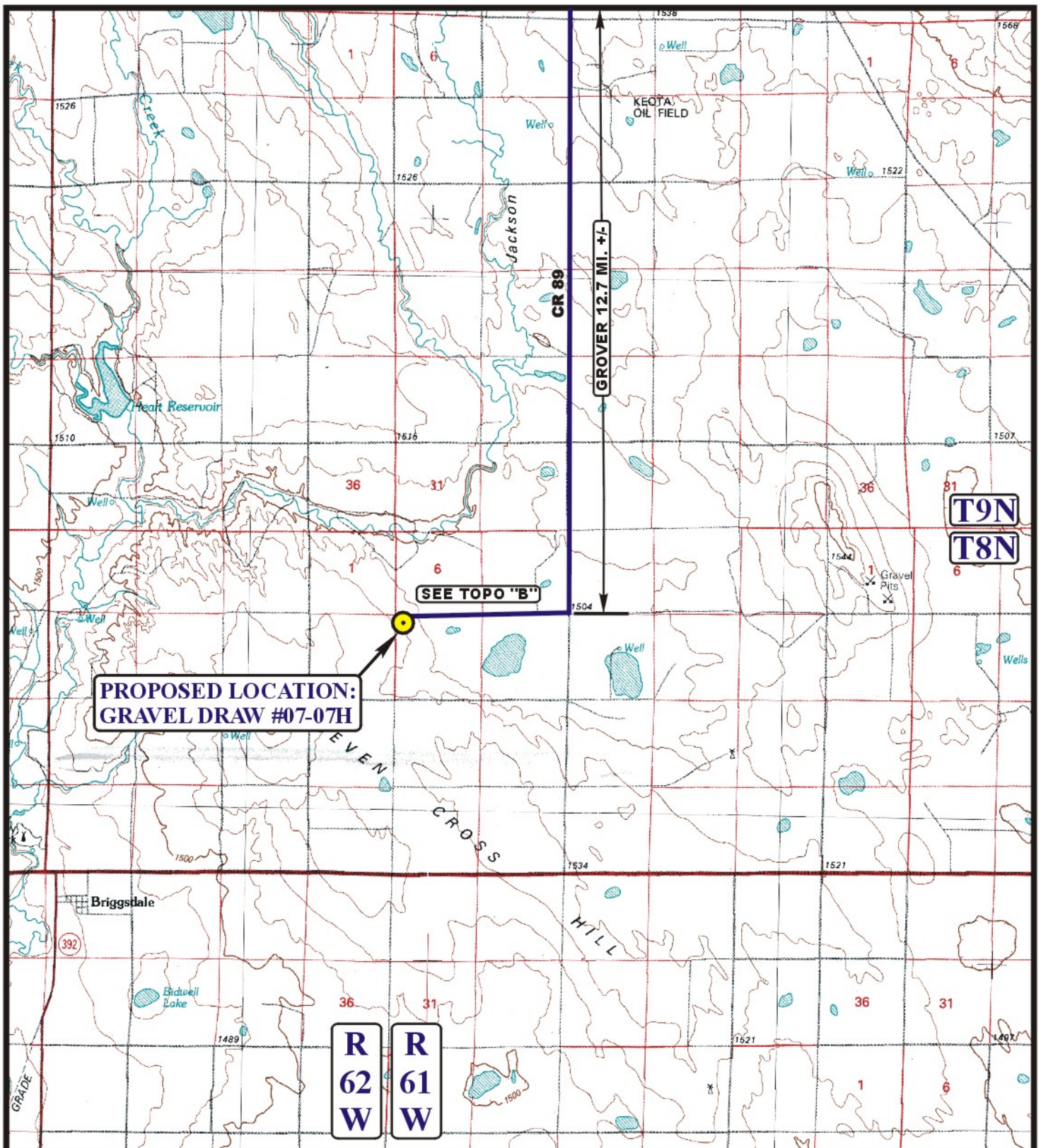


EOG RESOURCES, INC.
GRAVEL DRAW #07-07H
SECTION 7, T8N, R61W, 6th P.M.

PROCEED IN A SOUTHEASTERLY DIRECTION FROM GROVER, COLORADO ALONG COUNTY ROAD 390 APPROXIMATELY 0.2 MILES TO THE JUNCTION OF THIS ROAD AND COUNTY ROAD 89 TO THE SOUTH; TURN RIGHT AND PROCEED IN A SOUTHERLY DIRECTION APPROXIMATELY 12.5 MILES TO THE BEGINNING OF THE PROPOSED ACCESS ROAD TO THE WEST; FOLLOW ROAD FLAGS IN AN WESTERLY DIRECTION APPROXIMATELY 10,291' TO THE PROPOSED LOCATION.

TOTAL DISTANCE FROM GROVER, COLORADO TO THE PROPOSED LOCATION IS APPROXIMATELY 14.6 MILES.



LEGEND:

PROPOSED LOCATION



Uintah Engineering & Land Surveying
 85 South 200 East Vernal, Utah 84078
 (435) 789-1017 * FAX (435) 789-1813



EOG RESOURCES, INC.

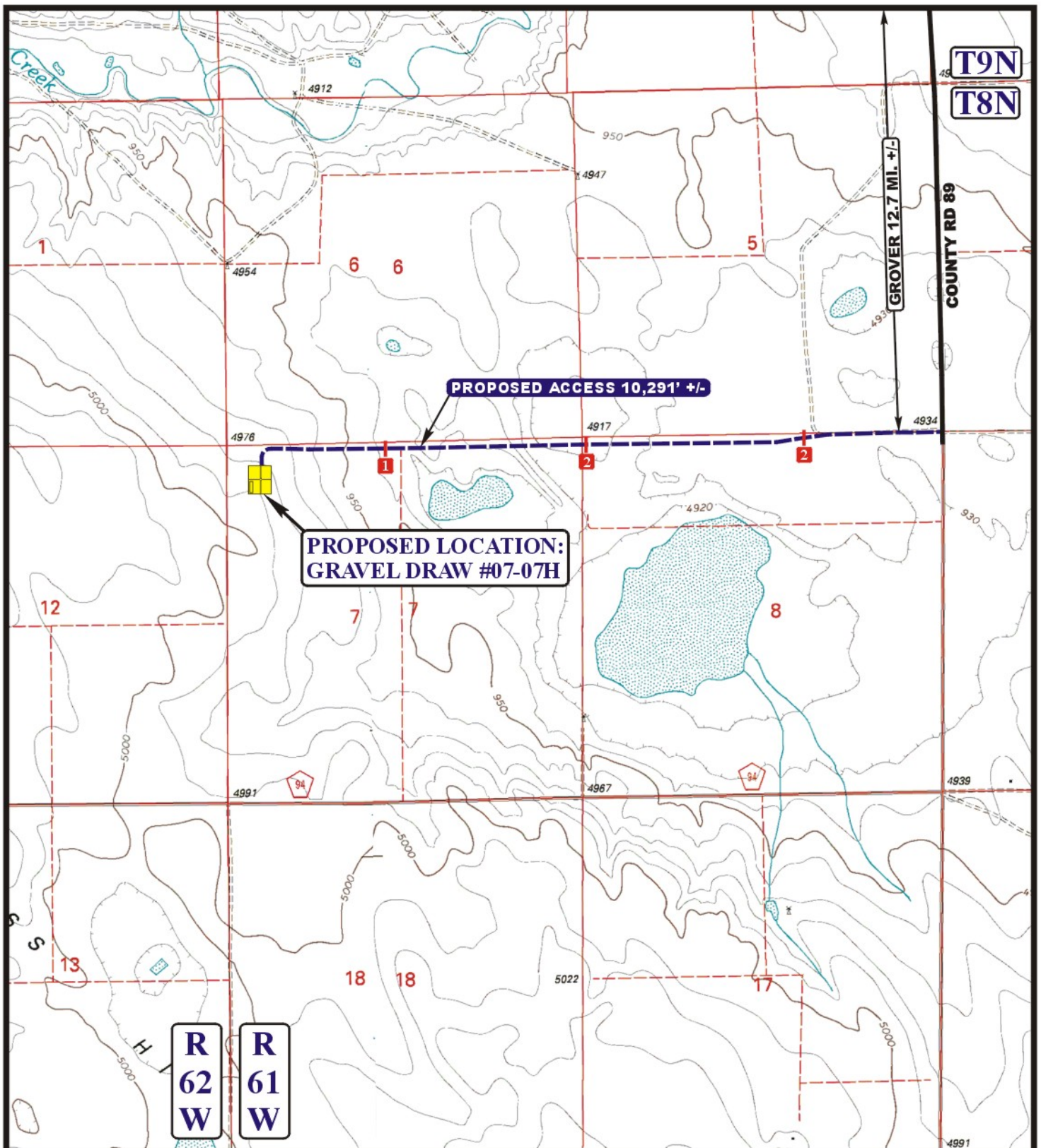
GRAVEL DRAW #07-07H
SECTION 7, T8N, R61W, 6th P.M.
501' FNL 501' FWL

ACCESS ROAD
MAP

12 15 10
 MONTH DAY YEAR

SCALE: 1:100,000 DRAWN BY: S.L. REVISED: 00-00-00

A
TOPO



LEGEND:

- EXISTING ROAD
- PROPOSED ACCESS ROAD
- 1 18" CMP REQUIRED
- 2 INSTALL CATTLE GUARD



Uintah Engineering & Land Surveying
 85 South 200 East Vernal, Utah 84078
 (435) 789-1017 * FAX (435) 789-1813



EOG RESOURCES, INC.

GRAVEL DRAW #07-07H
SECTION 7, T8N, R61W, 6th P.M.
501' FNL 501' FWL

TOPOGRAPHIC
MAP

12 15 10
 MONTH DAY YEAR

SCALE: 1" = 2000' DRAWN BY: S.L. REVISED: 00-00-00

B
TOPO