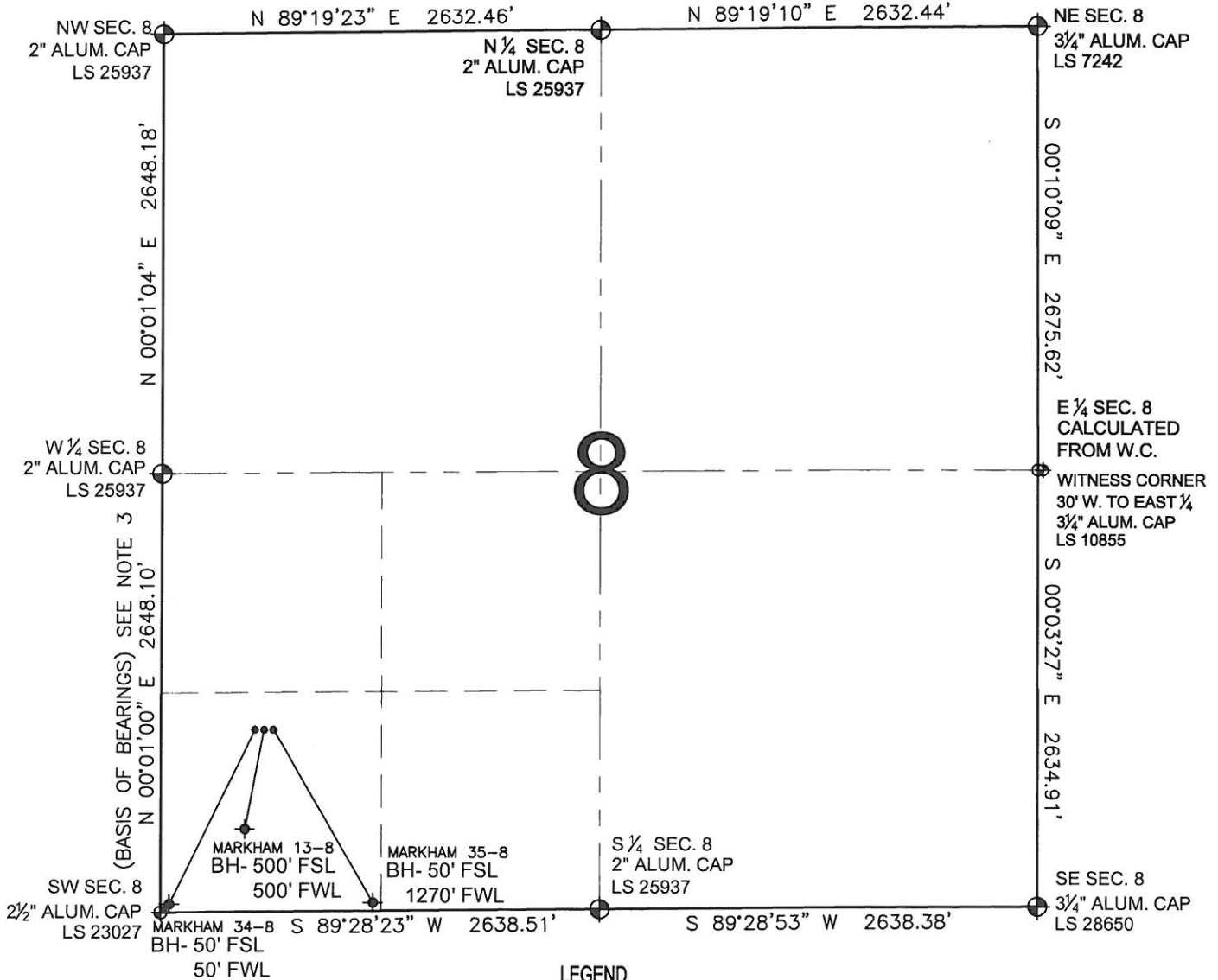


PAD DRAWING - MARKHAM 3 PAD

SECTION 8, TOWNSHIP 2 NORTH, RANGE 65 WEST, 6TH P.M.

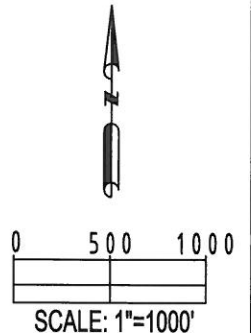



NOTES:

- THIS SURVEY WAS DONE BY GPS METHODS AND CONFORMS TO THE MINIMUM STANDARDS SET BY THE C.O.G.C.C., RULE NO. 215
- ELEVATIONS SHOWN AT THE WELL HEAD, AS WELL AS HORIZONTAL CONTROL, ARE BASED ON GPS-RTK VALUES DERIVED FROM DOING 2-HOUR STATIC GPS SESSIONS AND REDUCTIONS USING O.P.U.S. SOLUTIONS.
VERTICAL = NAVD88; HORIZONTAL = NAD83/92
- THE BEARINGS SHOWN HEREON ARE BASED ON GPS OBSERVATIONS BETWEEN THE MONUMENTS SHOWN HEREON AS FOUND ON THE FIELD DATE BELOW.
- DISTANCES SHOWN ARE AT GROUND LEVEL, AS MEASURED IN THE FIELD, WITH TIES TO WELLS MEASURED AT A PERPENDICULAR TO SECTION LINES.

NOTES:

MARKHAM 35-8 TO BE AT 1098' FSL, 672' FWL.
BOTTOM HOLE AT 50' FSL & 1270' FWL.
MARKHAM 13-8 TO BE AT 1099' FSL, 656' FWL.
BOTTOM HOLE AT 500' FSL & 500' FWL.
MARKHAM 34-8 TO BE AT 1100' FSL, 640' FWL.
BOTTOM HOLE AT 50' FSL & 50' FWL.



REVISIONS		PREPARED BY:	 PFS Petroleum Field Services, LLC 1801 W. 13th Ave. Denver, CO 80204
INITIAL	DATE		

KERR-MCGEE OIL & GAS ONSHORE LP

FIELD DATE:

08-26-10

PAD NAME:

MARKHAM 3 PAD

DRAWING DATE:

09-08-10

SURFACE LOCATION:

WELD COUNTY, COLORADO
SW 1/4 SW 1/4, SEC. 8, T2N, R65W

BY:

SMF