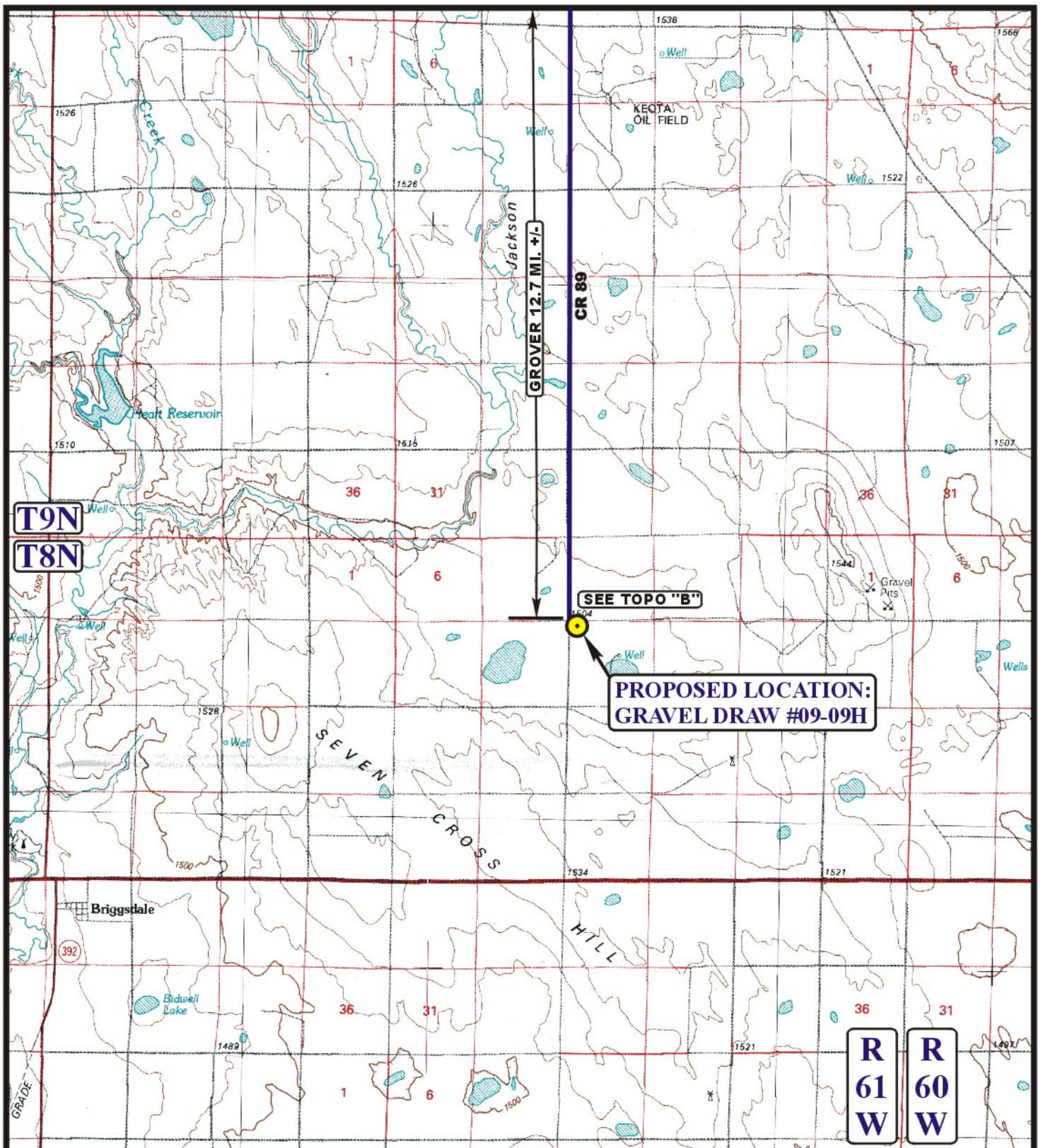


EOG RESOURCES, INC.  
GRAVEL DRAW #09-09H  
SECTION 9, T8N, R61W, 6<sup>th</sup> P.M.

PROCEED IN A SOUTHEASTERLY DIRECTION FROM GROVER, COLORADO ALONG COUNTY ROAD 390 APPROXIMATELY 0.2 MILES TO THE JUNCTION OF THIS ROAD AND COUNTY ROAD 89 TO THE SOUTH; TURN RIGHT AND PROCEED IN A SOUTHERLY DIRECTION APPROXIMATELY 12.5 MILES TO THE BEGINNING OF THE PROPOSED ACCESS ROAD FOR THE GRAVEL DRAW #04-04H TO THE EAST; FOLLOW ROAD FLAGS IN AN EASTERLY DIRECTION APPROXIMATELY 384' TO THE BEGINNING OF THE PROPOSED ACCESS TO THE SOUTH; FOLLOW ROAD FLAGS IN A SOUTHERLY DIRECTION APPROXIMATELY 267' TO THE PROPOSED LOCATION.

TOTAL DISTANCE FROM GROVER, COLORADO TO THE PROPOSED LOCATION IS APPROXIMATELY 12.8 MILES.



# LEGEND:

PROPOSED LOCATION

EOG RESOURCES, INC.

**GRAVEL DRAW #09-09H**  
**SECTION 9, T8N, R61W, 6th P.M.**  
**501' FNL 501' FWL**



**Uintah Engineering & Land Surveying**  
**85 South 200 East Vernal, Utah 84078**  
**(435) 789-1017 \* FAX (435) 789-1813**



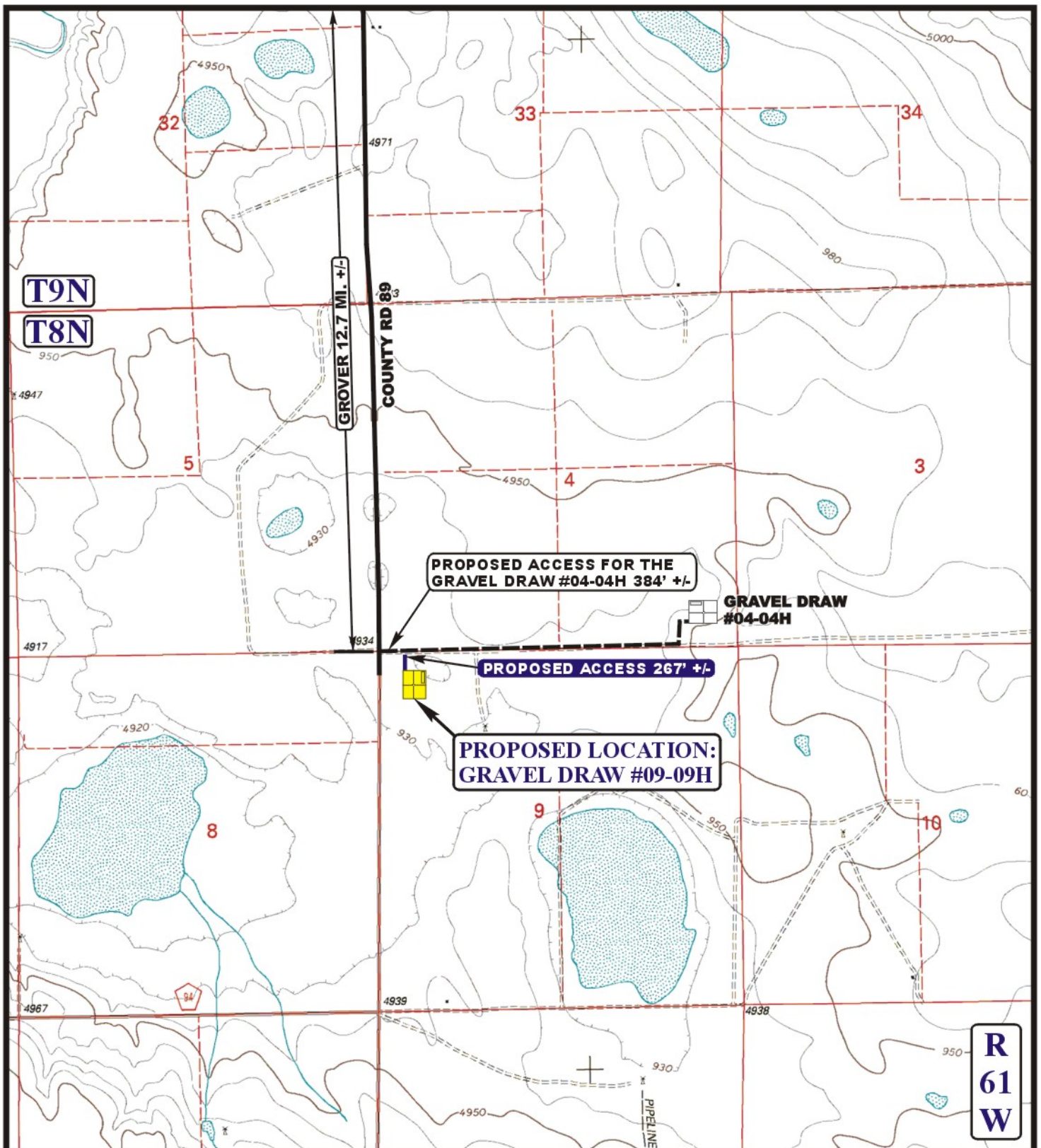
**ACCESS ROAD**  
**MAP**

**12 15 10**  
MONTH DAY YEAR

SCALE: 1:100,000 DRAWN BY: S.L. REVISED: 00-00-00







# **LEGEND:**

— EXISTING ROAD  
- - - PROPOSED ACCESS ROAD

**EOG RESOURCES, INC.**

**GRAVEL DRAW #09-09H**  
**SECTION 9, T8N, R61W, 6th P.M.**  
**501' FNL 501' FWL**



**Utah Engineering & Land Surveying**  
85 South 200 East Vernal, Utah 84078  
(435) 789-1017 \* FAX (435) 789-1813



**TOPOGRAPHIC MAP**

SCALE: 1" = 2000' DRAWN BY: S.L. REVISED: 00-00-00

**B**  
**TOPO**

**12 15 10**  
MONTH DAY YEAR