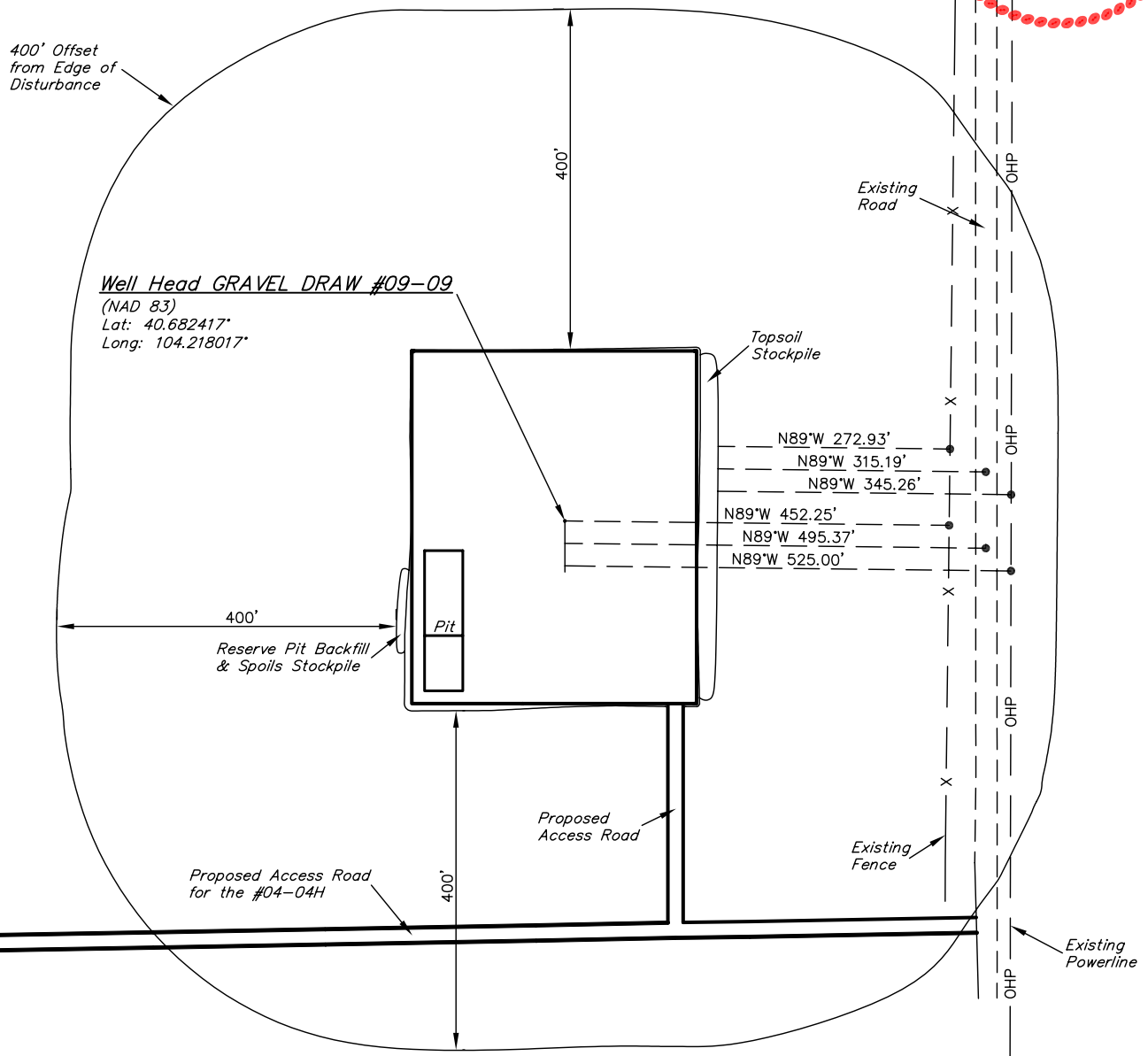
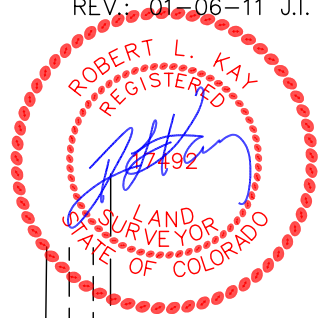


EOG RESOURCES, INC.

ADDENDUM TO LEGAL PLAT FOR

GRAVEL DRAW #09-09H
SECTION 9, T8N, R61W, 6th. P.M.
501' FNL 501' FWL

SCALE: 1" = 200'
DATE: 12-8-10
DRAWN BY: J.I.
REV: 01-06-11 J.I.



EOG RESOURCES, INC.

CONSTRUCTION LAYOUT FOR

GRAVEL DRAW #09-09H
SECTION 9, T8N, R61W, 6th. P.M.
501' FNL 501' FWL

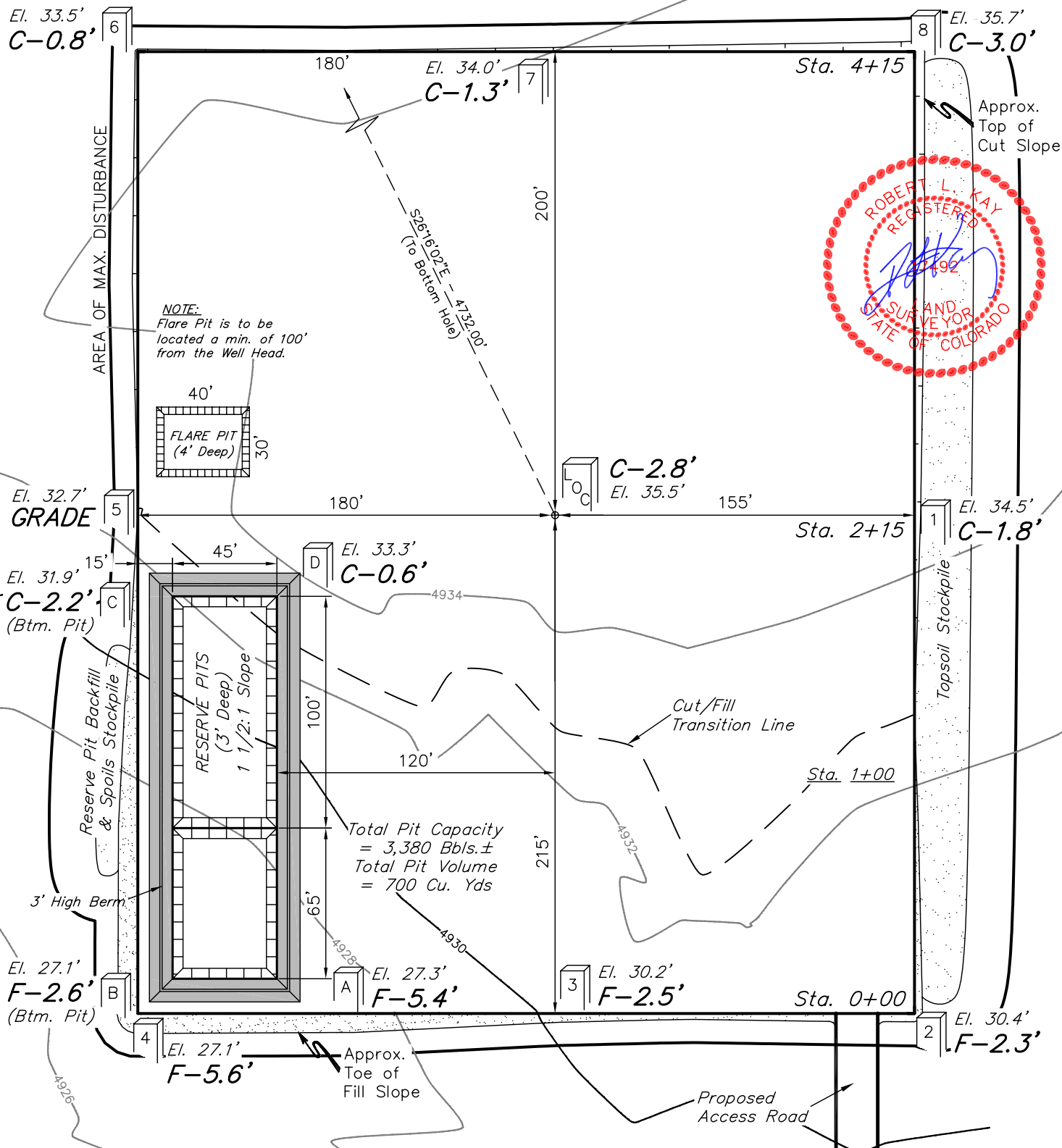
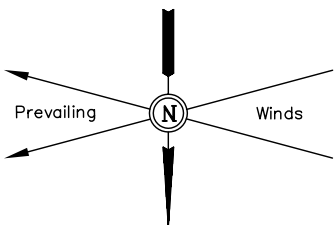
FIGURE #1

SCALE: 1" = 60'

DATE: 12-8-10

DRAWN BY: J.I.

REV.: 01-06-11 J.I.



Elev. Ungraded Ground At Loc. Stake = **4935.5'**
FINISHED GRADE ELEV. AT LOC. STAKE = **4932.7'**

UINTAH ENGINEERING & LAND SURVEYING
85 So. 200 East * Vernal, Utah 84078 * (435) 789-1017

EOG RESOURCES, INC.

FIGURE #2

CONSTRUCTION LAYOUT CROSS SECTIONS FOR

GRAVEL DRAW #09-09H

SECTION 9, T8N, R61W, 6th. P.M.

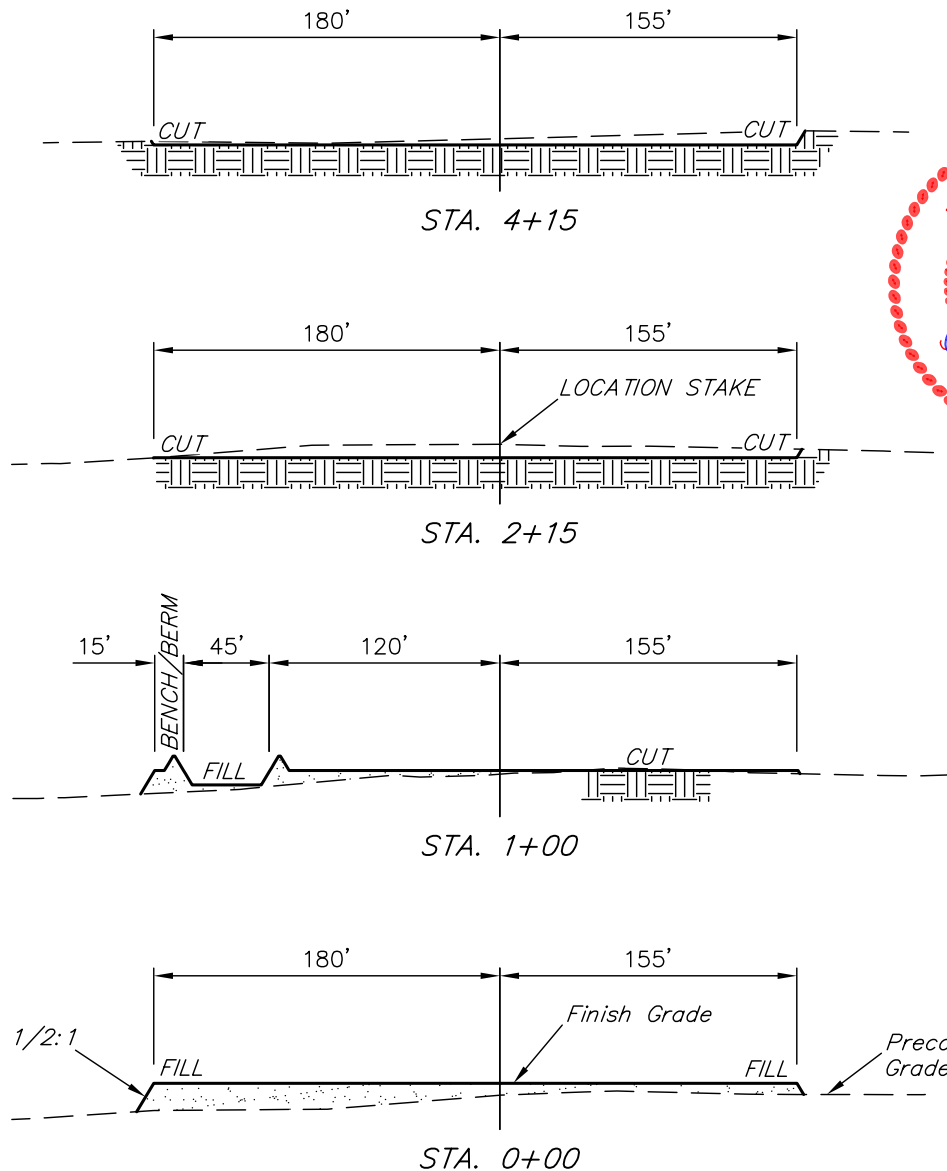
501' FNL 501' FWL

X-Section
Scale
1" = 100'

DATE: 12-8-10

DRAWN BY: J.I.

REV.: 01-06-11 J.I.



NOTE:

Topsoil should not be Stripped Below Finished Grade on Substructure Area.

APPROXIMATE ACREAGES

WELL SITE DISTURBANCE = ± 4.040 ACRES
ACCESS ROAD DISTURBANCE = ± 0.184 ACRES
TOTAL = ± 4.224 ACRES

* NOTE:
FILL QUANTITY INCLUDES 5% FOR COMPACTION

APPROXIMATE YARDAGES

(6") Topsoil Stripping = 2,710 Cu. Yds.
Remaining Location = 5,200 Cu. Yds.
TOTAL CUT = 7,910 CU.YDS.
FILL = 4,850 CU.YDS.

EXCESS MATERIAL = 3,060 Cu. Yds.
Topsoil & Pit Backfill (1/2 Pit Vol.) = 3,060 Cu. Yds.
EXCESS UNBALANCE (After Interim Rehabilitation) = 0 Cu. Yds.

UINTAH ENGINEERING & LAND SURVEYING
85 So. 200 East * Vernal, Utah 84078 * (435) 789-1017

EOG RESOURCES, INC.

TYPICAL RIG LAYOUT FOR

GRAVEL DRAW #09-09H
SECTION 9, T8N, R61W, 6th. P.M.
501' FNL 501' FWL

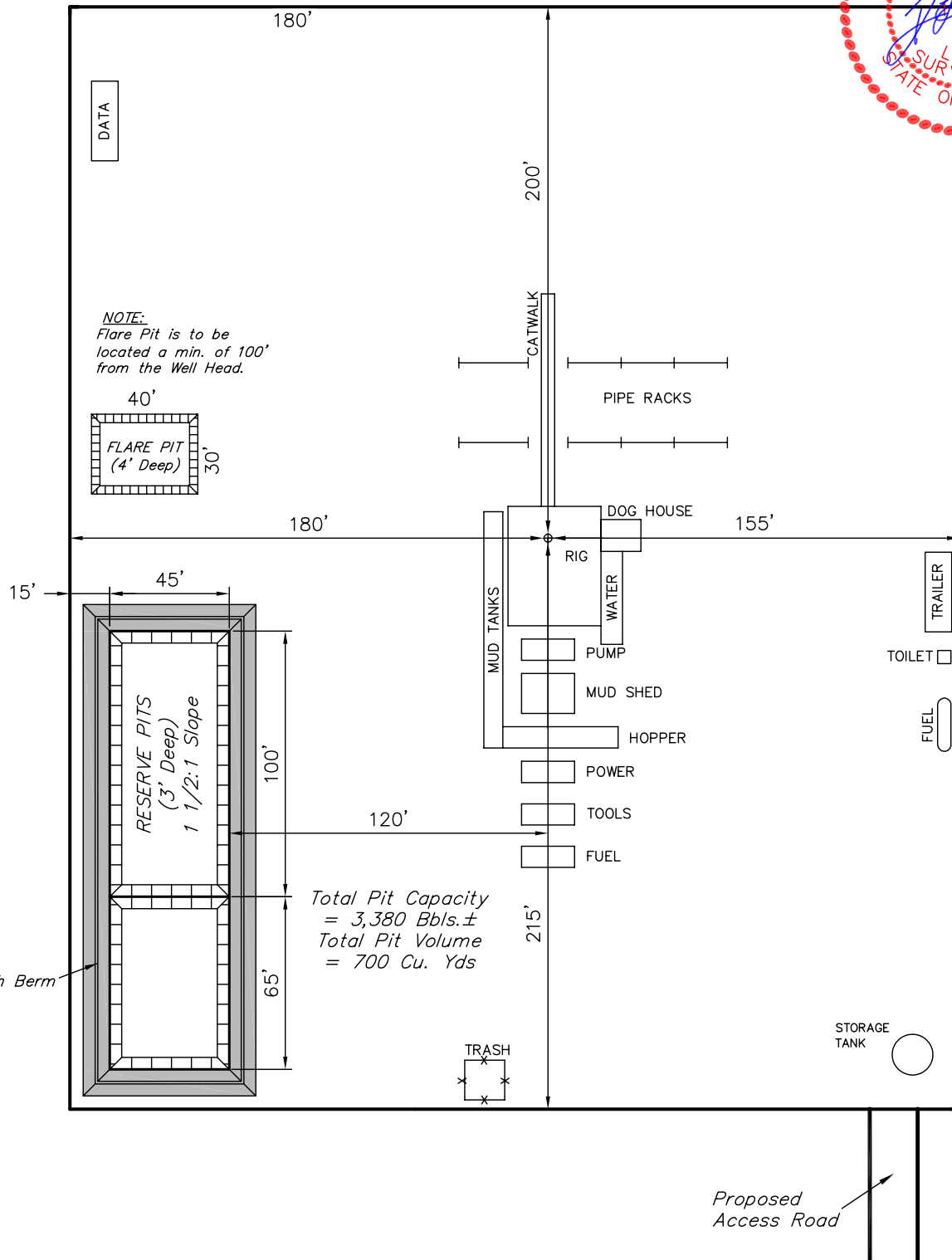
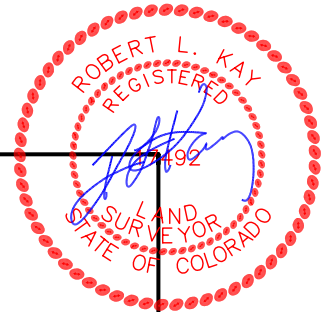
FIGURE #3

SCALE: 1" = 60'

DATE: 12-8-10

DRAWN BY: J.I.

REV.: 01-06-11 J.I.



UINTAH ENGINEERING & LAND SURVEYING

85 So. 200 East * Vernal, Utah 84078 * (435) 789-1017



EOG RESOURCES, INC.
RECLAMATION DIAGRAM FOR
GRAVEL DRAW #09-09H
SECTION 9, T8N, R61W, 6th. P.M.
501' FNL 501' FWL

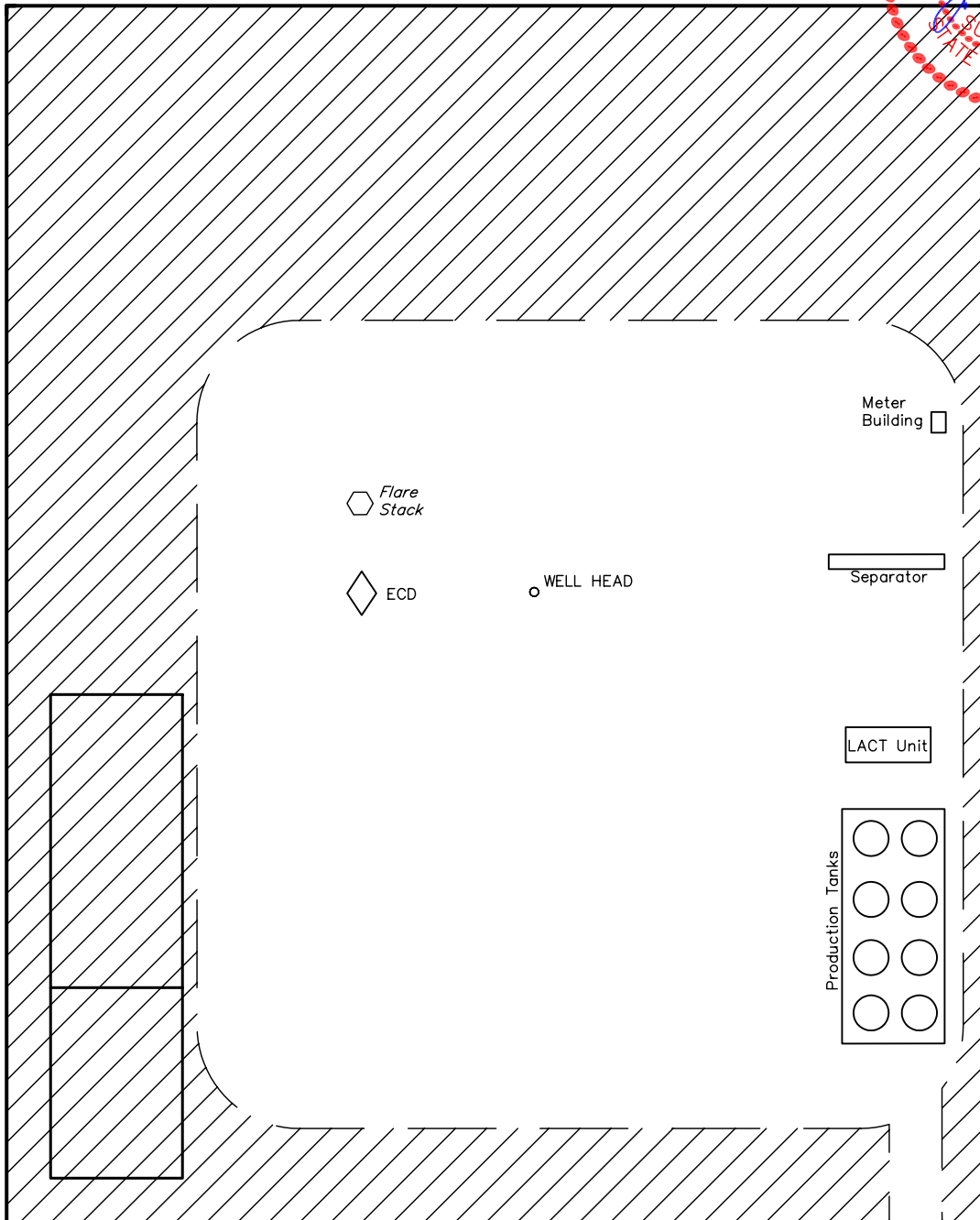
FIGURE #4

SCALE: 1" = 60'

DATE: 12-8-10

DRAWN BY: J.I.

REV: 01-06-11 J.I.



APPROXIMATE ACREAGES
UN-RECLAIMED = ± 1.646 ACRES



RECLAIMED AREA

UINTAH ENGINEERING & LAND SURVEYING
85 So. 200 East * Vernal, Utah 84078 * (435) 789-1017

EOG RESOURCES, INC.

LOCATION DRAWING FOR GRAVEL DRAW #09-09H SECTION 9, T8N, R61W, 6th. P.M. 501' FNL 501' FWL

FIGURE #5

UELS Alum. Cap
Lat: 40.683797°
Long: 104.219806°

S89°43'33"E - 2655.65' (Meas.)

Section Line

UELS Alum. Cap
Lat: 40.683767°
Long: 104.210233°

S89°05'05"E
2651.35' (Meas.)

NE Cor. Sec 9
UELS Alum. Cap
Lat: 40.683656°
Long: 104.200678°

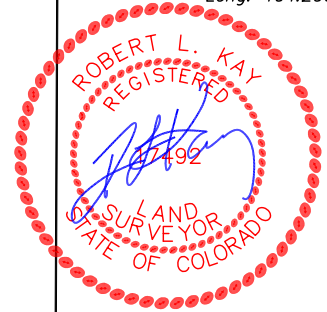
WEST
501.00'
(To County
Road #89 &
Property Line)
WEST
530.00'
(To Power
Line)

S30°37'00"W - 24.94 Miles
(To Railroad)

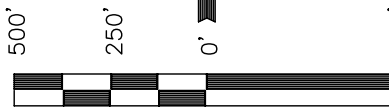
**GARY J.
SIEVERS**

S55°00'00"E - 1270.90'
(To Water Well)

S64°00'00"E - 3403.84'
(To Building)



1/16 Section Line



SCALE
DATE: 12-8-10
DRAWN BY: J.I.

1/4 Section Line

1/4 Section Line

9

N00°31'10"E - 2702.13' (Meas.)
Section Line
N00°40'20"E
2664.28' (Meas.)
SW Cor. Sec 9
Private Alum. Cap
Lat: 40.669072°
Long: 104.219994°

PLANT COMMUNITY

- ☐ DISTURBED GRASSLAND
- ☐ NATIVE GRASSLAND
- ☐ SHRUB LAND
- ☐ PLAINS RIPARIAN
- ☐ MOUNTAIN RIPARIAN
- ☐ FOREST LAND
- ☐ WETLANDS AQUATIC
- ☐ ALPINE
- ☐ OTHER (Describe): _____

CURRENT LAND USE

- CROP LAND: ☐ IRRIGATED ☐ DRY LAND ☐ IMPROVED PASTURE ☐ HAY MEADOW ☐ CRP
- NON-CROP LAND: ☐ RANGELAND ☐ TIMBER ☐ RECREATIONAL ☐ OTHER (Describe) _____
- SUBDIVIDED: ☐ INDUSTRIAL ☐ COMMERCIAL ☐ RESIDENTIAL _____

FUTURE LAND USE

- CROP LAND: ☐ IRRIGATED ☐ DRY LAND ☐ IMPROVED PASTURE ☐ HAY MEADOW ☐ CRP
- NON-CROP LAND: ☐ RANGELAND ☐ TIMBER ☐ RECREATIONAL ☐ OTHER (Describe) _____
- SUBDIVIDED: ☐ INDUSTRIAL ☐ COMMERCIAL ☐ RESIDENTIAL _____