

EOG RESOURCES, INC.
FISCUS MESA #07-08H
 LOCATED IN WELD COUNTY, COLORADO
 SECTION 8, T9N, R58W, 6th P.M.

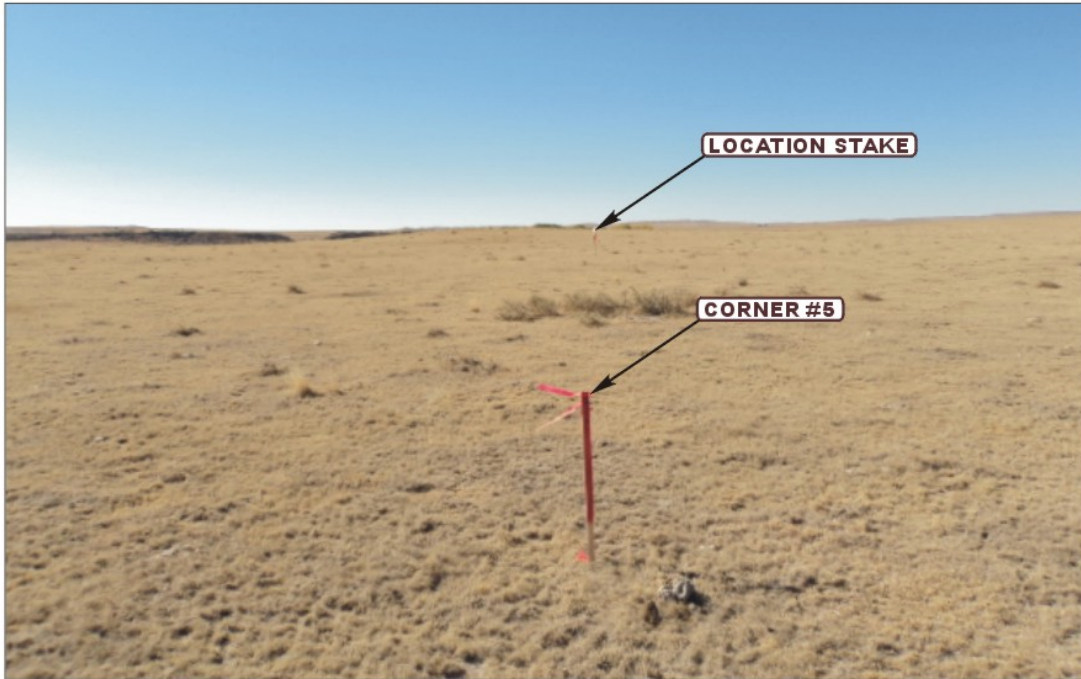


PHOTO: VIEW FROM CORNER #5 TO LOCATION STAKE

CAMERA ANGLE: WESTERLY



PHOTO: VIEW FROM BEGINNING OF PROPOSED ACCESS

CAMERA ANGLE: NORTHERLY



Uintah Engineering & Land Surveying
 85 South 200 East Vernal, Utah 84078
 (435) 789-1017 * FAX (435) 789-1813

- Since 1964 -

LOCATION PHOTOS

11 05 10
 MONTH DAY YEAR

PHOTO
 P1

TAKEN BY: G.M.

DRAWN BY: Z.L.

REVISED: 00-00-00

EOG RESOURCES, INC.
FISCUS MESA #07-08H
 LOCATED IN WELD COUNTY, COLORADO
 SECTION 8, T9N, R58W, 6th P.M.

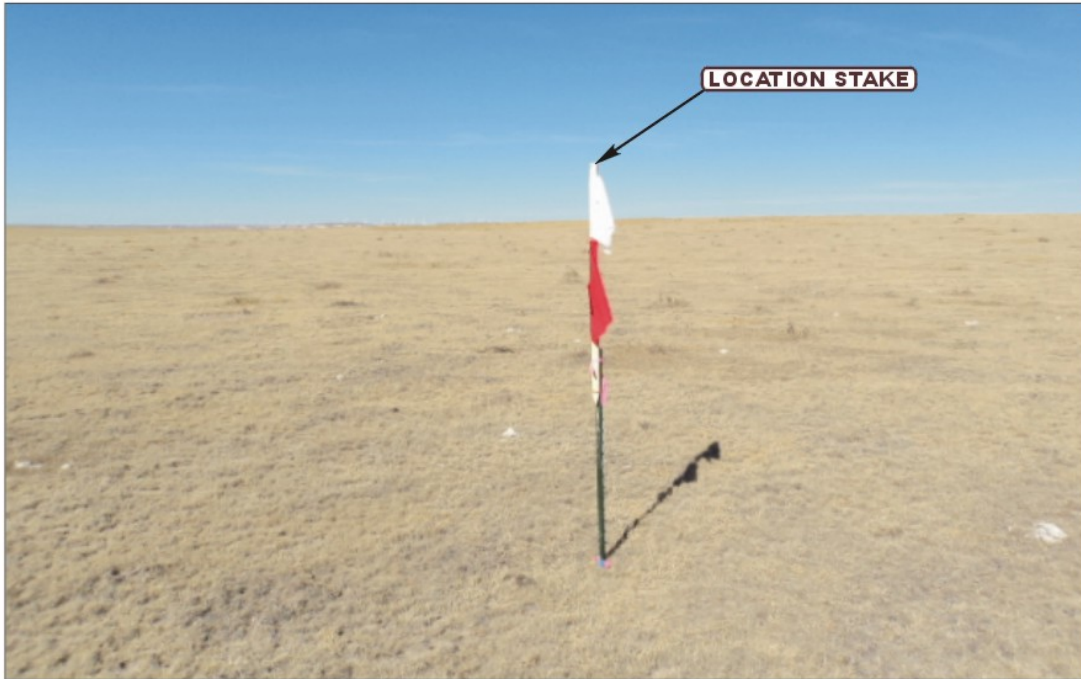


PHOTO: VIEW OF LOCATION STAKE

CAMERA ANGLE: NORTHERLY



PHOTO: VIEW OF LOCATION STAKE

CAMERA ANGLE: EASTERLY



Uintah Engineering & Land Surveying
 85 South 200 East Vernal, Utah 84078
 (435) 789-1017 * FAX (435) 789-1813

- Since 1964 -

LOCATION PHOTOS

11 05 10
 MONTH DAY YEAR

PHOTO
 P2

TAKEN BY: G.M.

DRAWN BY: Z.L.

REVISED: 00-00-00

EOG RESOURCES, INC.
FISCUS MESA #07-08H
 LOCATED IN WELD COUNTY, COLORADO
 SECTION 8, T9N, R58W, 6th P.M.



PHOTO: VIEW OF LOCATION STAKE

CAMERA ANGLE: SOUTHERLY



PHOTO: VIEW OF LOCATION STAKE

CAMERA ANGLE: WESTERLY



Uintah Engineering & Land Surveying
 85 South 200 East Vernal, Utah 84078
 (435) 789-1017 * FAX (435) 789-1813

- Since 1964 -

LOCATION PHOTOS			11	05	10	PHOTO P3
			MONTH	DAY	YEAR	
TAKEN BY: G.M.	DRAWN BY: Z.L.	REVISED: 00-00-00				