

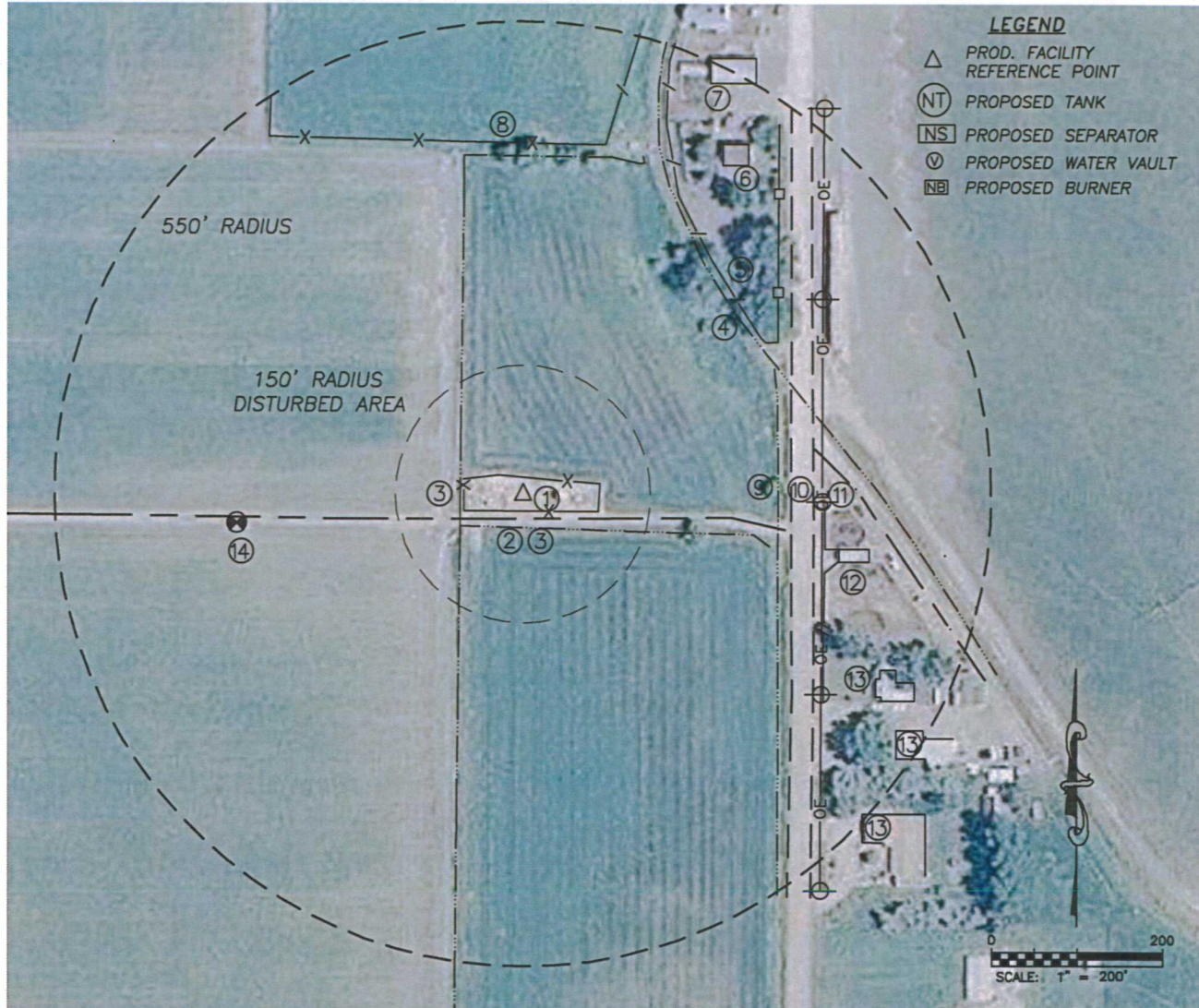
DALEY LAND SURVEYING, INC.

PARKER, CO. 80134

303 953 9841

# PRODUCTION FACILITY LOCATION DRAWING BROWN PC E03-17

SECTION 3, TOWNSHIP 6 NORTH, RANGE 65 WEST OF THE 6TH PRINCIPAL MERIDIAN

**REFERENCE POINT LOCATION:**

LATITUDE: N40.51829°  
 LONGITUDE: W104.64092°  
 ELEV.: 4840'  
 PDOP.: 1.9  
 FOOTAGE: 1727' FNL, 323' FEL  
 QTR/QTR: SE4/NE4  
 DATE: 11/30/2010

**ASSOCIATED EXISTING WELLS:**

BROWN 3-14  
 BROWN 3-13

**ASSOCIATED NEW WELLS:**

BROWN PC E03-17

**DISTANCE TO NEAREST:**

BUILDING: 375'± SE  
 PUBLIC ROAD: 315'± E  
 OVERHEAD UTILITY: 350'± E  
 RAILROAD: 5280'+  
 PROP. LINE: 323'± E

**EXISTING FACILITIES:**

TANKS: 1  
 SEPARATORS: 1  
 EMF: 1  
 VOC: 1

**IMPROVEMENTS**

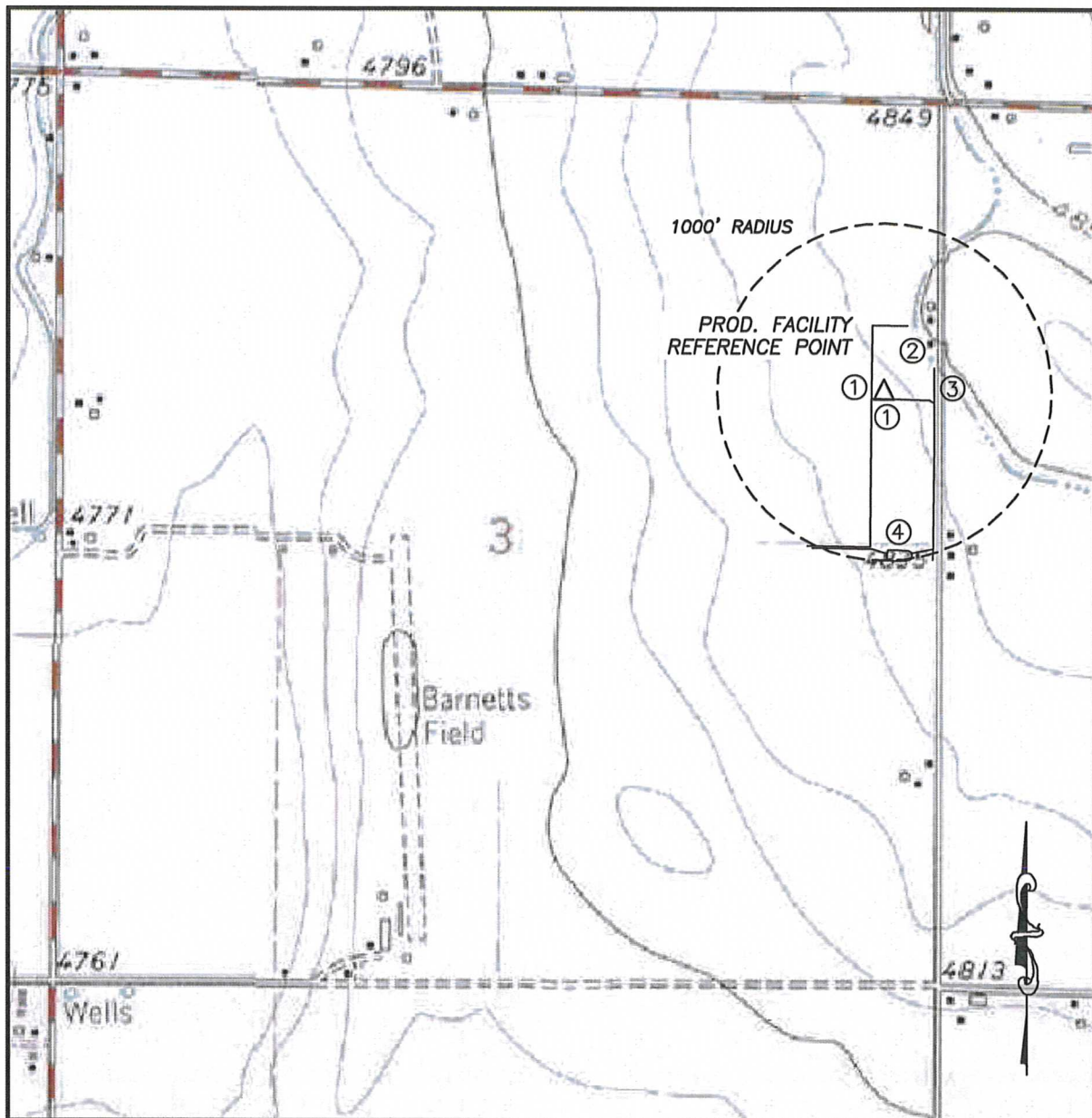
1. PROD. FACILITY: 35'± E  
 2. FIELD ROAD: 25'± S  
 3. CONC. DITCH: 45'± S, 75'± W  
 4. CANAL: 325'± NE  
 5. WIRE FENCE: 340'± NE  
 6. HOUSE: 455'± NE  
 7. METAL BUILDING: 525'± NE  
 8. WIRE FENCE: 410'± N  
 9. IRRIG. DITCH: 300'± E  
 10. W. EDGE WCR 45: 315'± E  
 11. O.H. UTILITY: 350'± E  
 12. SHED: 375'± E  
 13. HOUSE: 465'±, 520'±, 545'± SE  
 14. WELL-BROWN 3-14: 338'± W

DALEY LAND SURVEYING, INC. PARKER, CO. 80134 303 953 9841

# PRODUCTION FACILITY HYDROLOGY MAP

## BROWN PC E03-17

SECTION 3, TOWNSHIP 6 NORTH, RANGE 65 WEST OF THE 6TH PRINCIPAL MERIDIAN



0 1000  
SCALE: 1" = 1000'

### SURFACE WATER

- |                  |                |
|------------------|----------------|
| 1. CONC. DITCH:  | 45'± S, 75'± W |
| 2. CANAL:        | 325'± NE       |
| 3. IRRIG. DITCH: | 300'± E        |
| 4. IRRIG. POND:  | 940'± S        |