

ENCANA OIL & GAS (USA) INC. - EBUS
DO NOT MAIL-3601 N STAGECOACH RD
LONGMONT, Colorado

Ione
Ione 8-6-4

Ensign 122

Post Job Summary

Cement Surface Casing

Prepared for:
Date Prepared: 8/19/2010
Version: 1

Service Supervisor: AARON, WESLEY

Submitted by: Mark Sauter

HALLIBURTON

The Road to Excellence Starts with Safety

Sold To #: 340078	Ship To #: 2801255	Quote #:	Sales Order #: 7569588
Customer: ENCANA OIL & GAS (USA) INC. - EBUS		Customer Rep:	
Well Name: lone		Well #: 8-6-4	API/UWI #:
Field: WATTENBERG	City (SAP): FORT LUPTON	County/Parish: Weld	State: Colorado
Contractor: Ensign		Rig/Platform Name/Num: 122	
Job Purpose: Cement Surface Casing			
Well Type: Development Well		Job Type: Cement Surface Casing	
Sales Person:		Srvc Supervisor: AARON, WESLEY	MBU ID Emp #: 403606

Job Personnel

HES Emp Name	Exp Hrs	Emp #	HES Emp Name	Exp Hrs	Emp #	HES Emp Name	Exp Hrs	Emp #
AARON, WESLEY J	4	403606	CONGDON, RICHARD S.	4	320306	OZBUN, RYAN Jacob	4	475709
SNYDER, JONATHAN Leroy	4	435616	WILEY, JAMES A	4	440080	Mark Sauter	4	410526

Equipment

HES Unit #	Distance-1 way	HES Unit #	Distance-1 way	HES Unit #	Distance-1 way	HES Unit #	Distance-1 way
10824253C	15 mile	11064046C	15 mile				

Job Hours

Date	On Location Hours	Operating Hours	Date	On Location Hours	Operating Hours	Date	On Location Hours	Operating Hours
	4	1	8/16/2010					
TOTAL			<i>Total is the sum of each column separately</i>					

Job

Job Times

Formation Name	Top	Bottom	Called Out	Date	Time	Time Zone
Formation Depth (MD)			On Location	16 - Aug - 2010	06:00	MST
Form Type		BHST	Job Started	16 - Aug - 2010	09:00	MST
Job depth MD	817. ft	Job Depth TVD	817. ft	Job Completed	16 - Aug - 2010	12:24
Water Depth		Wk Ht Above Floor		Job Completed	16 - Aug - 2010	13:05
Perforation Depth (MD)	<i>From</i>	<i>To</i>	Departed Loc	16 - Aug - 2010	13:40	MST

Well Data

Description	New / Used	Max pressure psig	Size in	ID in	Weight lbm/ft	Thread	Grade	Top MD ft	Bottom MD ft	Top TVD ft	Bottom TVD ft
Open Hole				12.25				.	820.		
Surface Casing	New		8.625	8.097	24.	8 RD	J-55	.	817.		

Tools and Accessories

Type	Size	Qty	Make	Depth	Type	Size	Qty	Make	Depth	Type	Size	Qty	Make
Guide Shoe					Packer					Top Plug			
Float Shoe					Bridge Plug					Bottom Plug			
Float Collar					Retainer					SSR plug set			
Insert Float										Plug Container			
Stage Tool										Centralizers			

Miscellaneous Materials

Gelling Agt	Conc	Surfactant	Conc	Acid Type	Qty	Conc %
Treatment Fld	Conc	Inhibitor	Conc	Sand Type	Size	Qty

Fluid Data

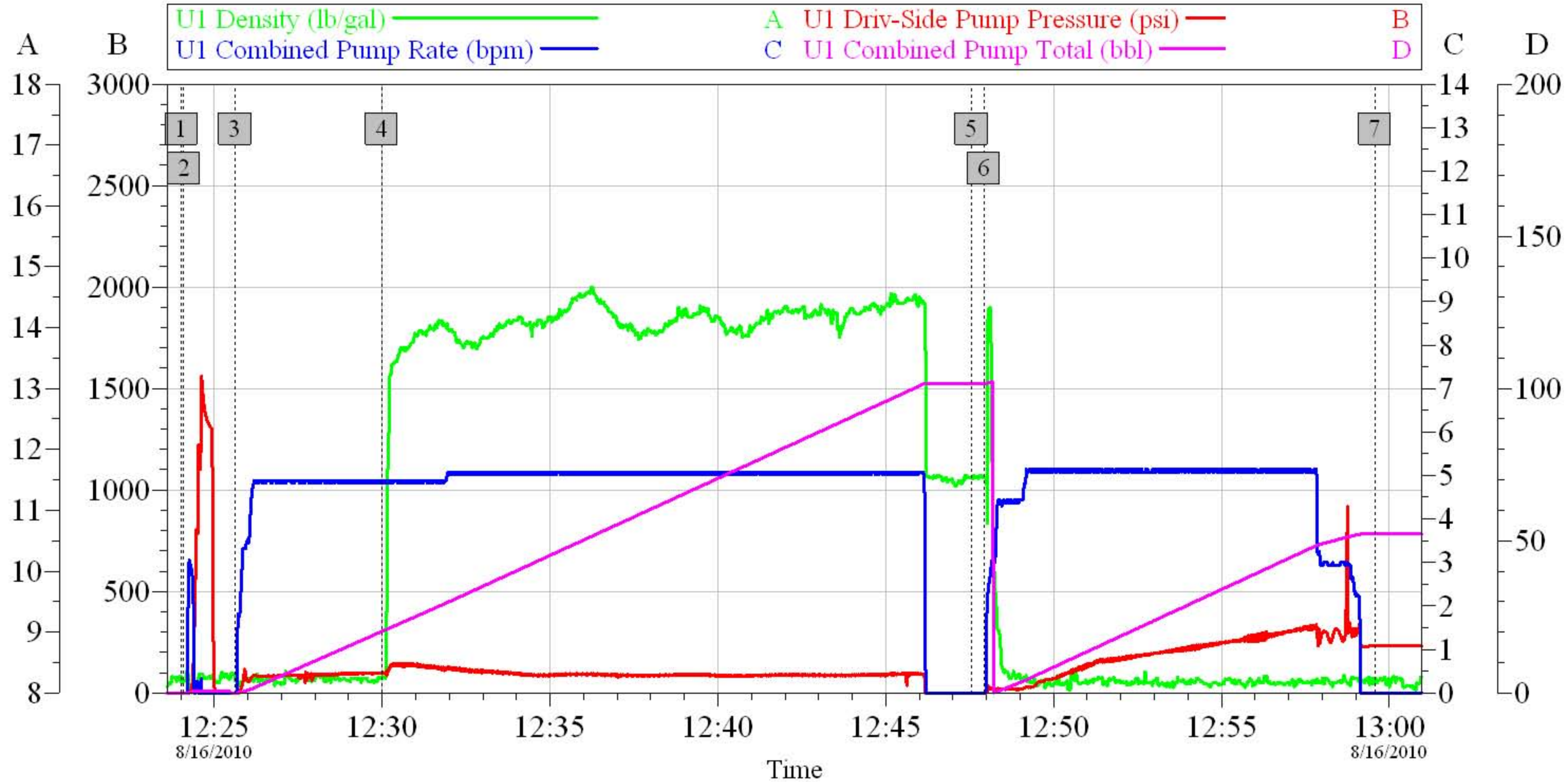
Stage/Plug #: 1									
Fluid #	Stage Type	Fluid Name	Qty	Qty uom	Mixing Density lbm/gal	Yield ft3/sk	Mix Fluid Gal/sk	Rate bbl/min	Total Mix Fluid Gal/sk

Stage/Plug #: 1

Stage/Plug #: 1										
Fluid #	Stage Type	Fluid Name	Qty	Qty uom	Mixing Density lbm/gal	Yield ft ³ /sk	Mix Fluid Gal/sk	Rate bbl/min	Total Mix Fluid Gal/sk	
1	Water Spacer			bbl	8.33	.0	.0	5.0		
2	Lead Cement	SWIFTCEM (TM) SYSTEM (452990)		sacks	14.2	1.51	7.53	5.0	7.53	
	7.53 Gal	FRESH WATER								
3	Water Displacement			bbl	8.33	.0	.0	5.0		
Calculated Values		Pressures			Volumes					
Displacement		Shut In: Instant		Lost Returns	0	Cement Slurry		Pad		
Top Of Cement	0	5 Min		Cement Returns	25bbl	Actual Displacement	24.9	Treatment		
Frac Gradient		15 Min		Spacers	20bbl	Load and Breakdown		Total Job		
Rates										
Circulating	5	Mixing		5	Displacement	5	Avg. Job		5	
Cement Left In Pipe	Amount	41 ft	Reason	Shoe Joint						
Frac Ring # 1 @	ID	Frac ring # 2 @	ID	Frac Ring # 3 @	ID	Frac Ring # 4 @	ID			
The Information Stated Herein Is Correct				Customer Representative Signature						

Encana

Ione 8-6-4 Surface



Global Event Log

1	Start Job	12:24:01	2	Test Lines	12:24:05	3	Pump Spacer 1	12:25:37
4	Pump Cement	12:29:59	5	Drop Top Plug	12:47:33	6	Pump Displacement	12:47:55
7	Shut In Well	12:59:34						

Customer: EnCana
Well Description: Ione 8-6-4

Job Date: 16-Aug-2010
Supervisor: Wes Aaron

Sales Order #: 7569588
Truck: ZS4

OptiCem v6.4.9
16-Aug-10 13:03