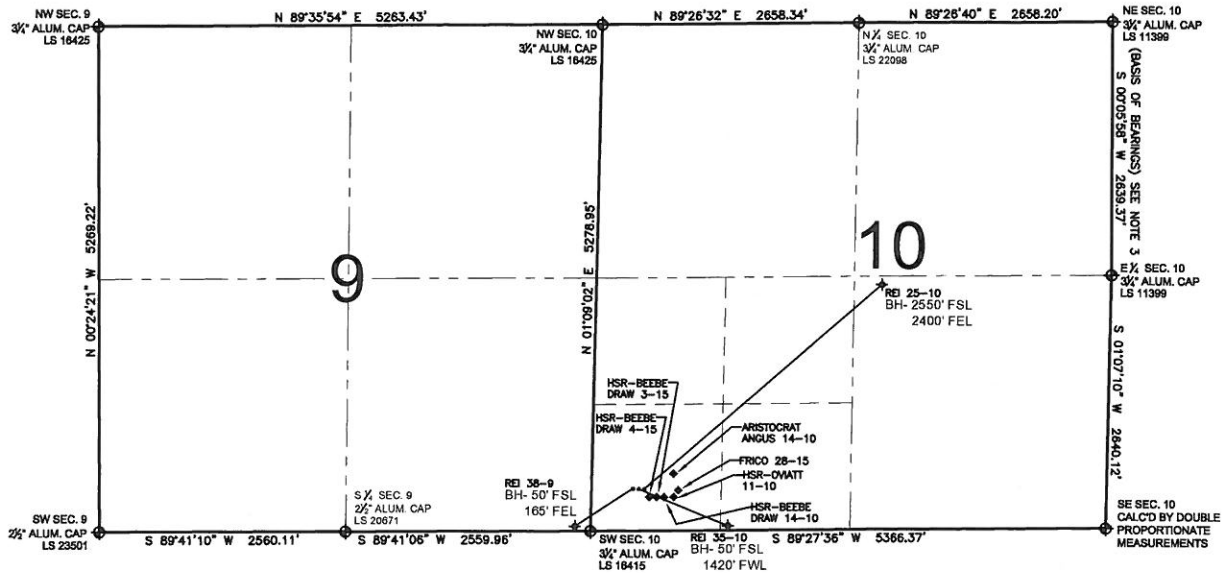


PAD DRAWING - REI 3 PAD

SECTION 10, TOWNSHIP 3 NORTH, RANGE 65 WEST, 6TH P.M.



LEGEND

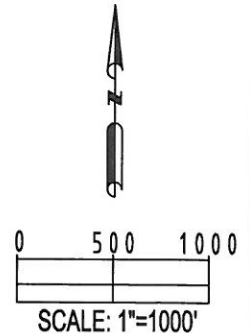
- = EXISTING MONUMENT = BOTTOM HOLE BH= BOTTOM HOLE
 = PROPOSED WELL = EXISTING WELL


NOTES:

- THIS SURVEY WAS DONE BY GPS METHODS AND CONFORMS TO THE MINIMUM STANDARDS SET BY THE C.O.G.C.C., RULE NO. 215
- ELEVATIONS SHOWN AT THE WELL HEAD, AS WELL AS HORIZONTAL CONTROL, ARE BASED ON GPS-RTK VALUES DERIVED FROM DOING 2-HOUR STATIC GPS SESSIONS AND REDUCTIONS USING O.P.U.S. SOLUTIONS.
VERTICAL = NAVD88; HORIZONTAL = NAD83/92
- THE BEARINGS SHOWN HEREON ARE BASED ON GPS OBSERVATIONS BETWEEN THE MONUMENTS SHOWN HEREON AS FOUND ON THE FIELD DATE BELOW.
- DISTANCES SHOWN ARE AT GROUND LEVEL, AS MEASURED IN THE FIELD, WITH TIES TO WELLS MEASURED AT A PERPENDICULAR TO SECTION LINES.

NOTES:

- REI 38-9 TO BE AT 440' FSL, 431' FWL.
 BOTTOM HOLE AT 50' FSL & 165' FEL.
 REI 35-10 TO BE AT 439' FSL, 447' FWL.
 BOTTOM HOLE AT 50' FSL & 1420' FWL.
 REI 25-10 TO BE AT 438' FSL, 463' FWL.
 BOTTOM HOLE AT 2550' FSL & 2400' FEL.
 HSR-BEEBE DRAW 4-15 IS 394' FSL, 486' FWL.
 HSR-BEEBE DRAW 3-15 IS 394' FSL, 518' FWL.
 HSR-BEEBE DRAW 14-10 IS 393' FSL, 550' FWL.
 HSR-OVIATT 11-10 IS 396' FSL, 583' FWL.
 FRICO 28-15 IS 430' FSL, 613' FWL.
 ARISTOCRAT ANGUS 14-10 IS 564' FSL, 589' FWL.



REVISIONS		PREPARED BY:	 Petroleum Field Services, LLC 1801 W. 13th Ave. Denver, CO 80204
INITIAL	DATE		

KERR-MCGEE OIL & GAS ONSHORE LP

FIELD DATE: 05-17-10	PAD NAME: REI 3 PAD
DRAWING DATE: 06-02-10	SURFACE LOCATION:
BY: SMF	WELD COUNTY, COLORADO SW 1/4 SW 1/4, SEC. 10, T3N, R65W