

EOG RESOURCES, INC.

ADDENDUM TO LEGAL PLAT FOR

GRAVEL DRAW #04-04H

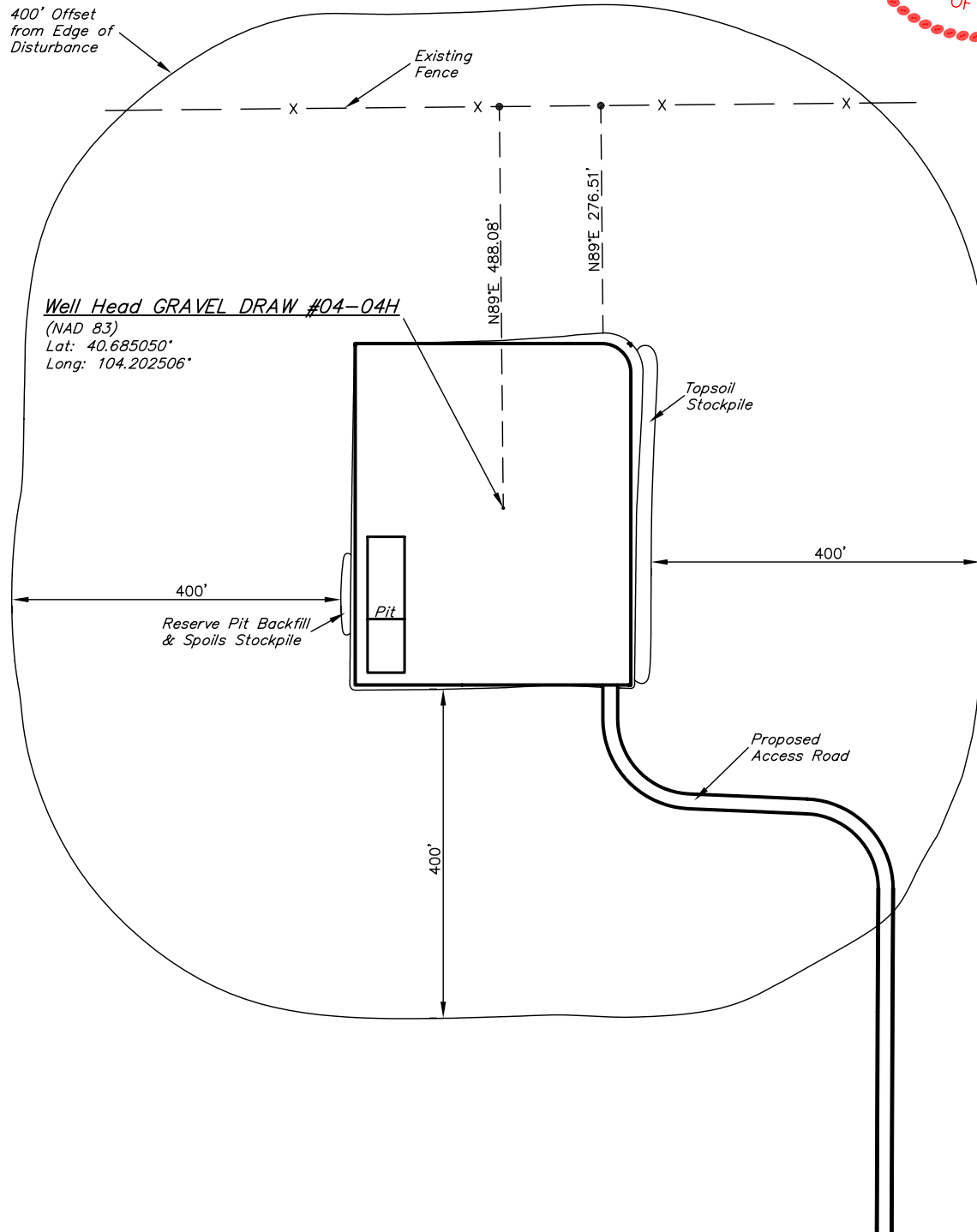
SECTION 4, T8N, R61W, 6th. P.M.

501' FSL 501' FEL

SCALE: 1" = 200'

DATE: 12-8-10

DRAWN BY: J.I.



UINTAH ENGINEERING & LAND SURVEYING

85 So. 200 East * Vernal, Utah 84078 * (435) 789-1017

EOG RESOURCES, INC.

CONSTRUCTION LAYOUT FOR

GRAVEL DRAW #04-04H
SECTION 4, T8N, R61W, 6th. P.M.
501' FSL 501' FEL

FIGURE #1

SCALE: 1" = 60'

DATE: 12-8-10

DRAWN BY: J.I.

NOTE:
Flare Pit is to be located a min. of 100' from the Well Head.

FLARE PIT
(4' Deep)

RESERVE PITS
(3' Deep)
1 1/2:1 Slope

Total Pit Capacity
= 3,380 Bbbls.±
Total Pit Volume
= 700 Cu. Yds

3' High Berm

Approx. Toe of Fill Slope

Approx. Top of Cut Slope

Topsoil Stockpile

Proposed Access Road

Cut/Fill Transition Line

Sta. 0+00
Sta. 1+00
Sta. 2+15
Sta. 4+15

Elev. Ungraded Ground At Loc. Stake = 4940.8'
FINISHED GRADE ELEV. AT LOC. STAKE = 4940.4'

UINTEAH ENGINEERING & LAND SURVEYING
85 So. 200 East * Vernal, Utah 84078 * (435) 789-1017

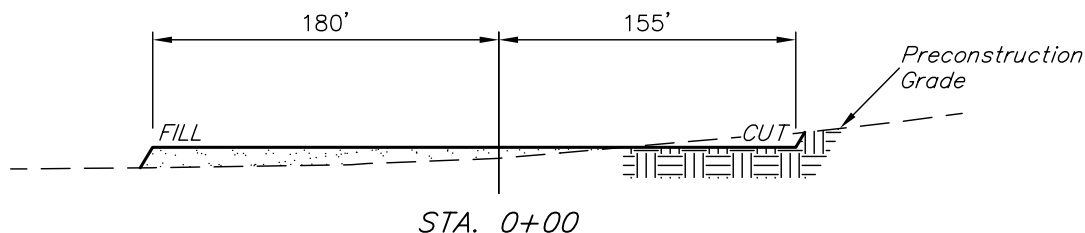
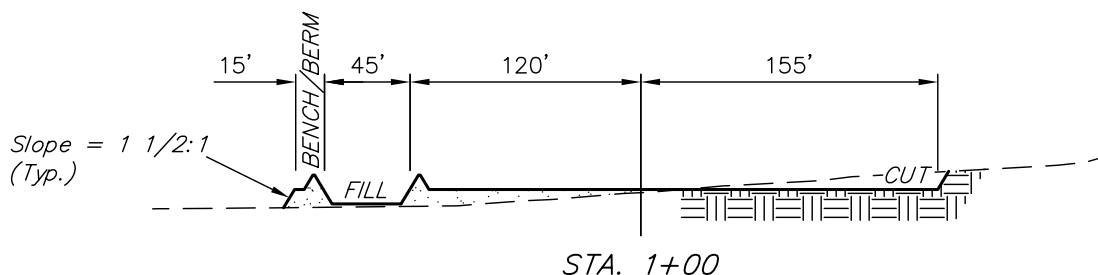
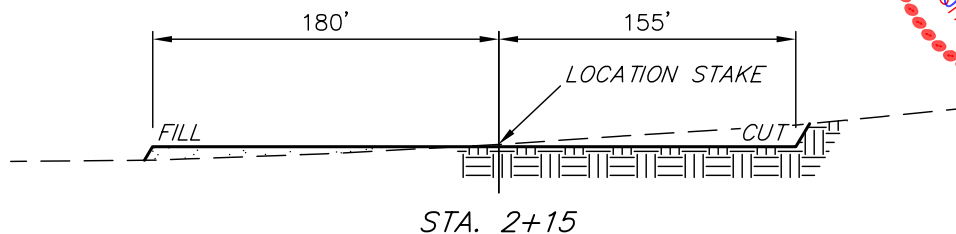
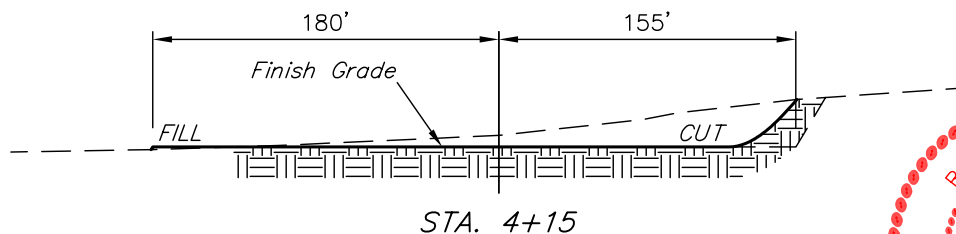
UINTAH ENGINEERING & LAND SURVEYING
85 So. 200 East * Vernal, Utah 84078 * (435) 789-1017

1" = 40'
X-Section
Scale
1" = 100'

EOG RESOURCES, INC.
CONSTRUCTION LAYOUT CROSS SECTIONS FOR
GRAVEL DRAW #04-04H
SECTION 4, T8N, R61W, 6th. P.M.
501' FSL 501' FEL

FIGURE #2

DATE: 12-8-10
DRAWN BY: J.I.



NOTE:

Topsoil should not be Stripped Below Finished Grade on Substructure Area.

APPROXIMATE ACREAGES

WELL SITE DISTURBANCE = ± 4.083 ACRES
ACCESS ROAD DISTURBANCE = ± 3.370 ACRES
TOTAL = ± 7.453 ACRES

* NOTE:
FILL QUANTITY INCLUDES 5% FOR COMPACTION

APPROXIMATE YARDAGES

(6") Topsoil Stripping = 2,780 Cu. Yds.
Remaining Location = 6,550 Cu. Yds.
TOTAL CUT = 9,330 CU.YDS.
FILL = 6,200 CU.YDS.

EXCESS MATERIAL = 3,130 Cu. Yds.
Topsoil & Pit Backfill = 3,130 Cu. Yds.
(1/2 Pit Vol.)
EXCESS UNBALANCE = 0 Cu. Yds.
(After Interim Rehabilitation)

UINTAH ENGINEERING & LAND SURVEYING
85 So. 200 East * Vernal, Utah 84078 * (435) 789-1017

EOG RESOURCES, INC.

TYPICAL RIG LAYOUT FOR

GRAVEL DRAW #04-04H

SECTION 4, T8N, R61W, 6th. P.M.

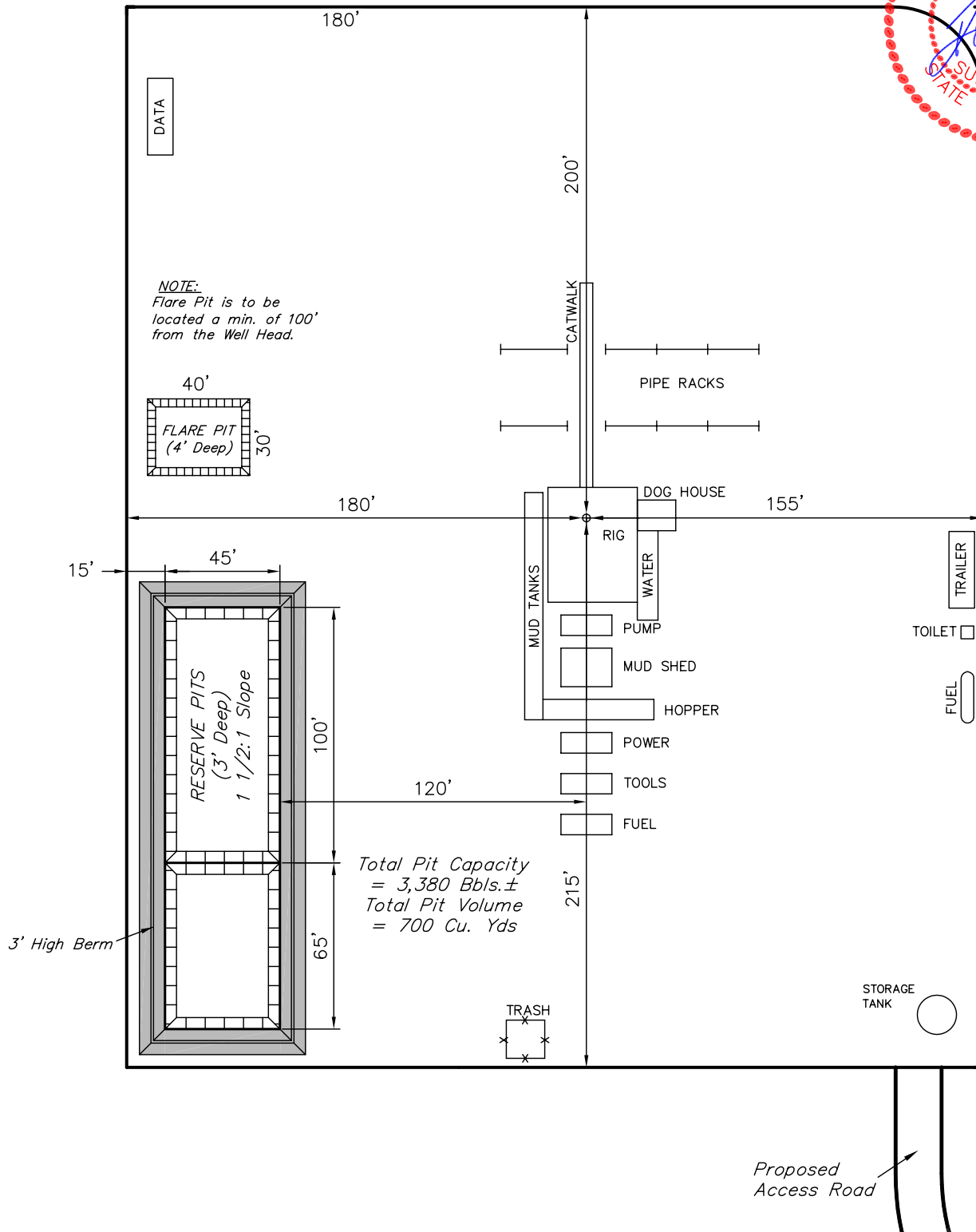
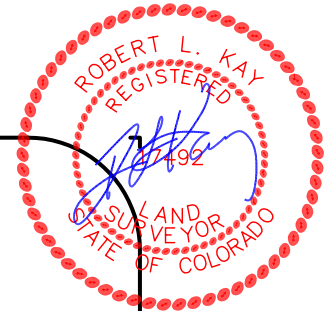
501' FSL 501' FEL

FIGURE #3

SCALE: 1" = 60'

DATE: 12-8-10

DRAWN BY: J.I.



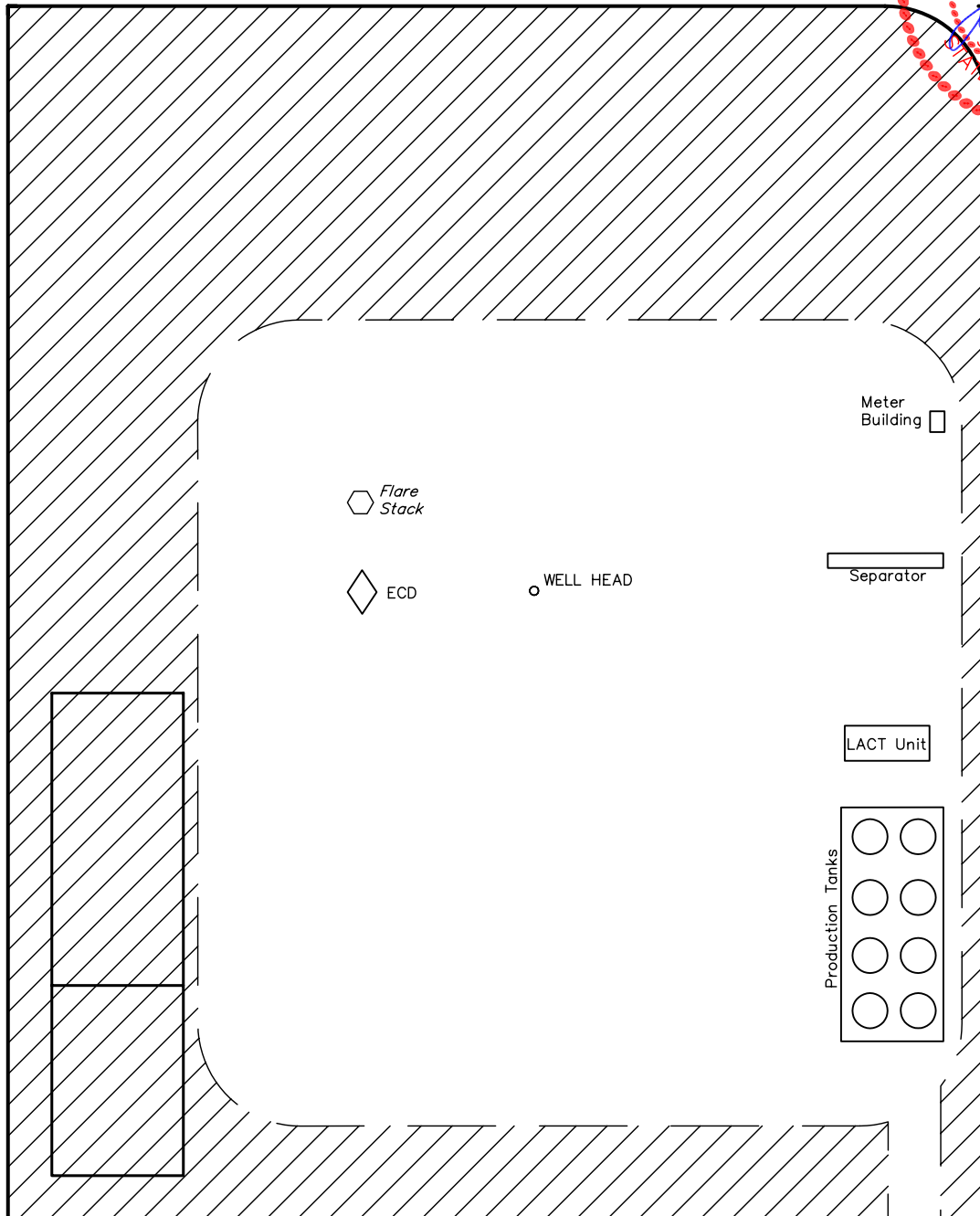
UINTAH ENGINEERING & LAND SURVEYING

85 So. 200 East * Vernal, Utah 84078 * (435) 789-1017

EOG RESOURCES, INC.
RECLAMATION DIAGRAM FOR
GRAVEL DRAW #04-04H
SECTION 4, T8N, R61W, 6th. P.M.
501' FSL 501' FEL

FIGURE #4

SCALE: 1" = 60'
DATE: 12-8-10
DRAWN BY: J.I.



APPROXIMATE ACREAGES
UN-RECLAIMED = ± 1.646 ACRES

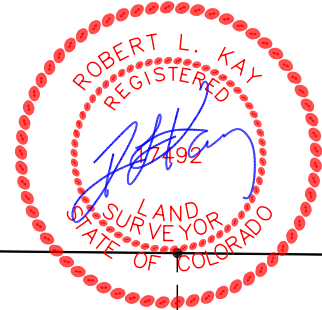


EOG REOUSRCES, INC.

LOCATION DRAWING FOR
GRAVEL DRAW #04-04H
SECTION 4, T8N, R61W, 6th. P.M.
501' FSL 501' FEL

FIGURE #5

NE Cor. Sec. 4
UELS Alum. Cap
Lat: 40.698014°
Long: 104.200908°



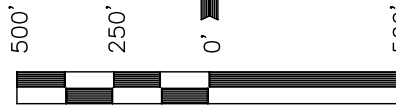
1/4 Section Line

1/4 Section Line

4

1/16 Section Line

Section Line
500'40'30"E - 5233.39' (Meas.)



SCALE
DATE: 12-8-10
DRAWN BY: J.I.

1/16 Section Line

NORTH - 2112.05'
(To Property Line)

**JAMES E. SIEVERS
& ANGES M.
SIEVERS
FAMILY TRUST**

SW Cor. Sec. 4
UELS Alum. Cap
Lat: 40.683797°
Long: 104.219806°

N89°43'33"W
2655.65' (Meas.)

UELS Alum. Cap
Lat: 40.683767°
Long: 104.210233°

WEST - 4820.00'
(To County Road #89)
S85°00'00"W - 4845.08'
(To Power Line)
S81°00'00"W - 4379.89'
(To Building & Water Well)

Section Line
N89°05'05"W - 2651.35' (Meas.)

S31°50'00"W
25.49 Miles
(To Railroad)

UELS Alum. Cap
Lat: 40.683656°
Long: 104.200678°

PLANT COMMUNITY

- ☐ DISTURBED GRASSLAND
- ☐ NATIVE GRASSLAND
- ☐ SHRUB LAND
- ☐ PLAINS RIPARIAN
- ☐ MOUNTAIN RIPARIAN
- ☐ FOREST LAND
- ☐ WETLANDS AQUATIC
- ☐ ALPINE
- ☐ OTHER (Describe): _____

CURRENT LAND USE

- CROP LAND: ☐ IRRIGATED ☐ DRY LAND ☐ IMPROVED PASTURE ☐ HAY MEADOW ☐ CRP
- NON-CROP LAND: ☐ RANGELAND ☐ TIMBER ☐ RECREATIONAL ☐ OTHER (Describe) _____
- SUBDIVIDED: ☐ INDUSTRIAL ☐ COMMERCIAL ☐ RESIDENTIAL _____

FUTURE LAND USE

- CROP LAND: ☐ IRRIGATED ☐ DRY LAND ☐ IMPROVED PASTURE ☐ HAY MEADOW ☐ CRP
- NON-CROP LAND: ☐ RANGELAND ☐ TIMBER ☐ RECREATIONAL ☐ OTHER (Describe) _____
- SUBDIVIDED: ☐ INDUSTRIAL ☐ COMMERCIAL ☐ RESIDENTIAL _____